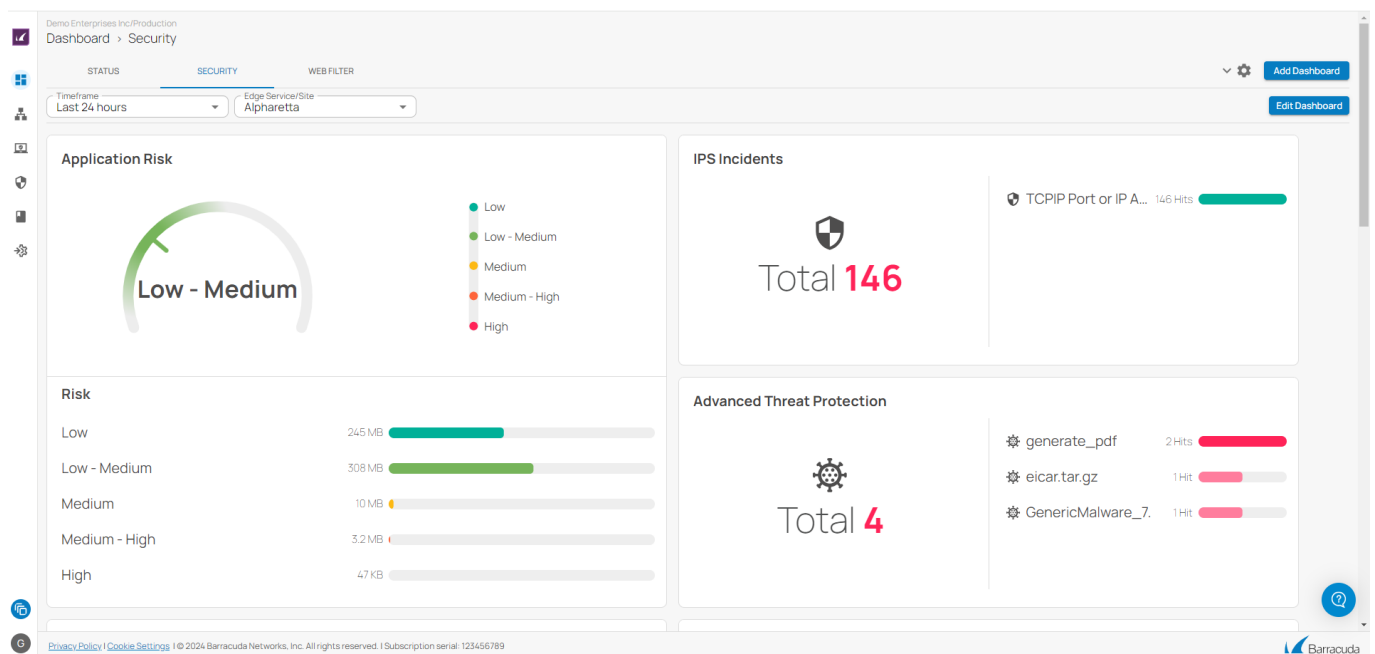


## How to Customize a SecureEdge Dashboard

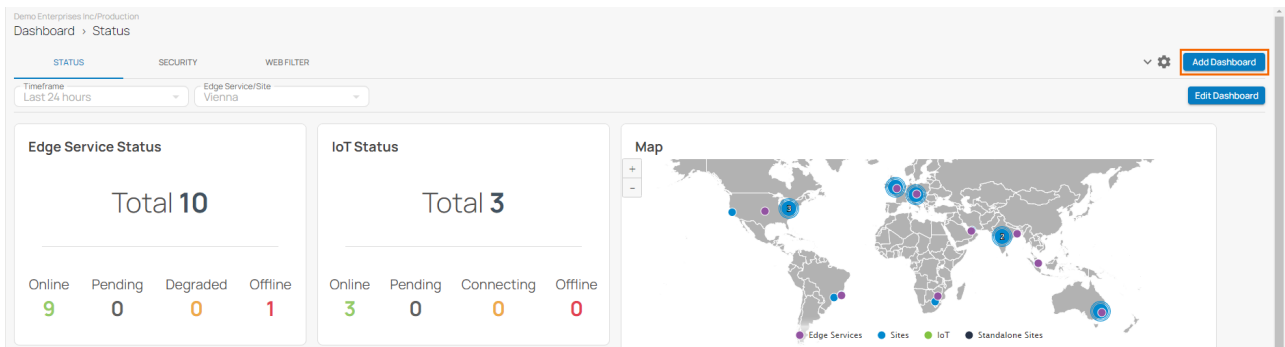
<https://campus.barracuda.com/doc/100370549/>

The Barracuda SecureEdge Manager allows administrators to create and customize their own dashboards in order to simplify management of traffic information and details for connected sites or edge services. The main dashboard of SecureEdge consists of three customizable pages: a general dashboard, a Web Filter dashboard, and a security dashboard. The main **Dashboard** page organizes system information (such as aggregated data consisting of general information, and secure web gateway and security information) into customizable elements that can be added or removed, depending of the information desired.



## Creating and Customizing Dashboards

1. Go to <https://se.barracudanetworks.com> and log in with your existing Barracuda Cloud Control account.
2. In the left menu, click the **Tenants/Workspaces** icon and select the workspace you want to add a dashboard for.
3. The **Status** dashboard page opens. In the top-right corner of the window, click **Add Dashboard**.



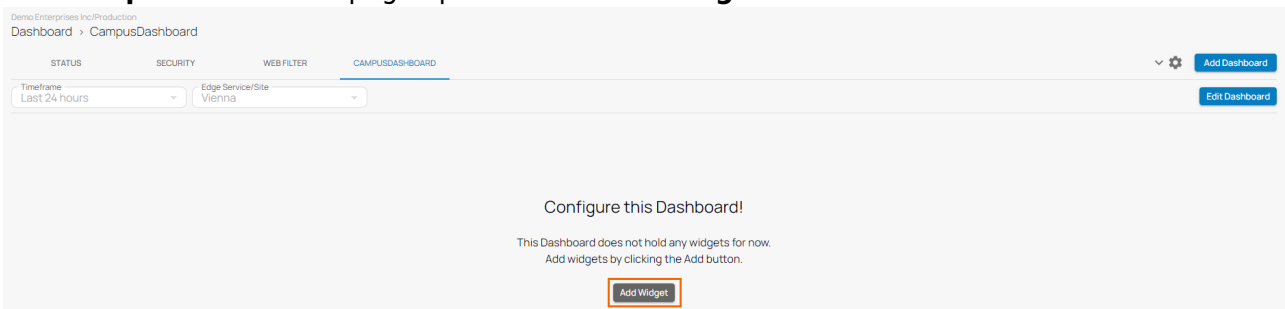
4. The **Create Dashboard** window opens. Specify the following:
- **Name** – Enter the unique name for your dashboard. For example, in this case: **CampusDashboard**.
  - **Template** – Select the template from the drop-down list. You can choose between **Status**, **Security**, **Web Filter**, and **Empty**.

Create Dashboard ×

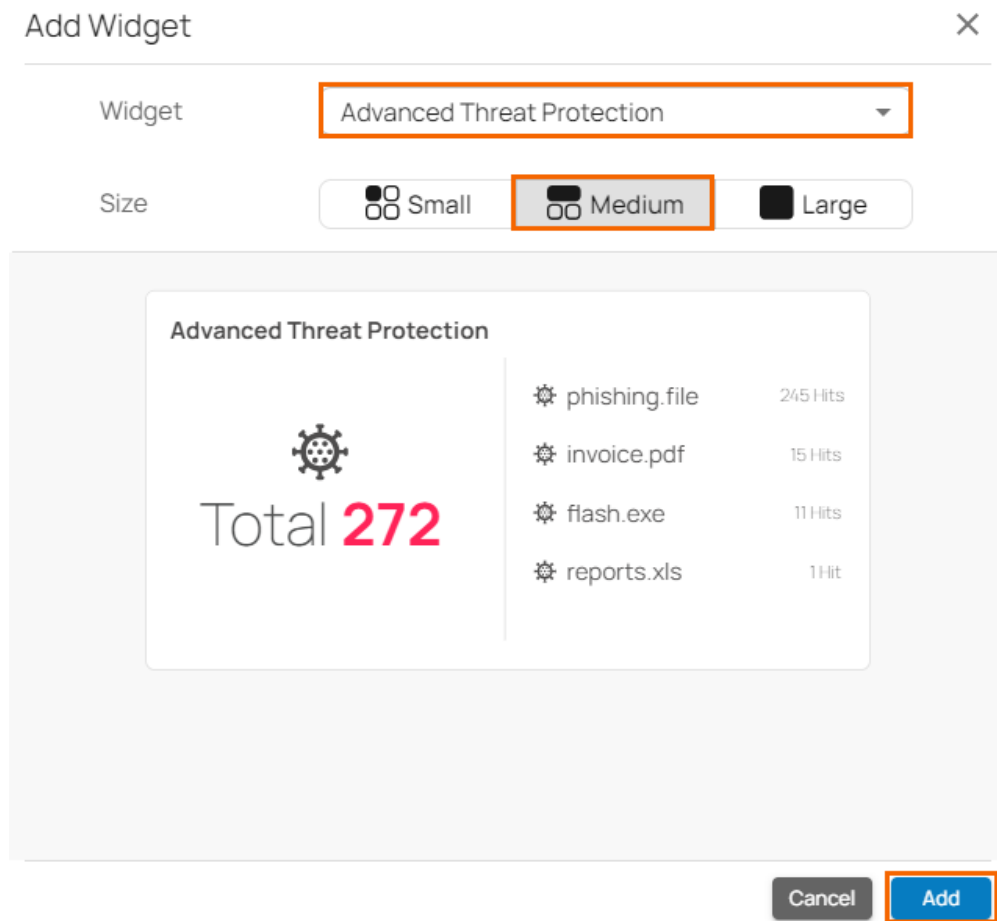
Name \*

Template

5. Click **Save**.
6. The **CampusDashboard** page opens. Click **Add Widget**.

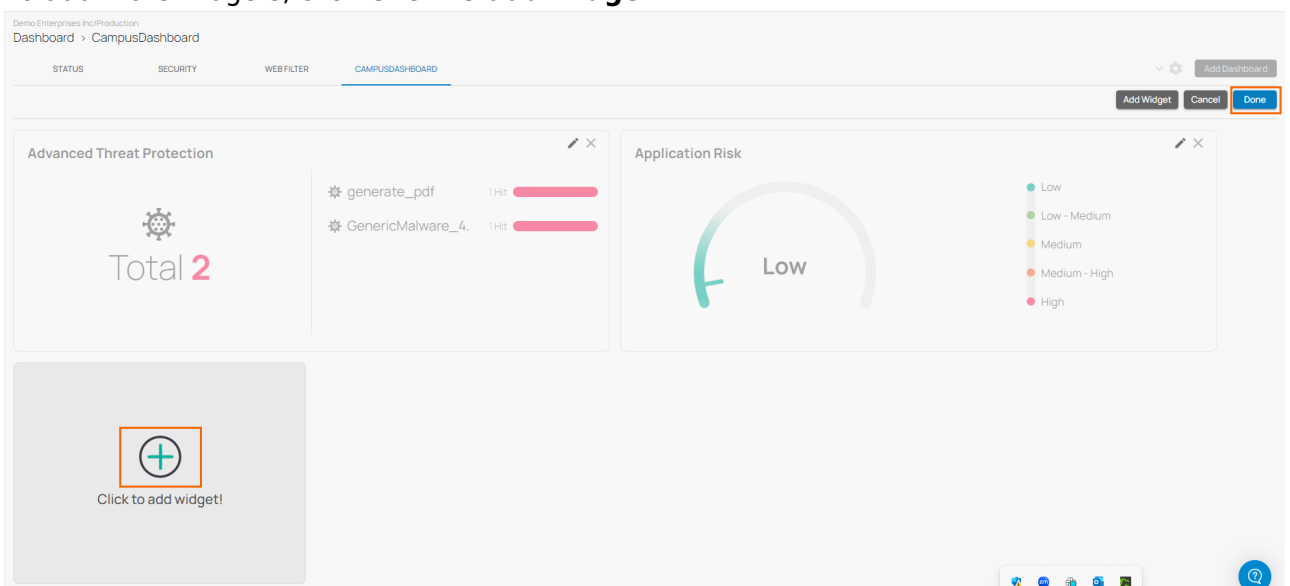


7. The **Add Widget** window opens. Specify values for the following:
- **Widget** – Select the widget type from the drop-down menu. For example, in this case: **Advanced Threat Protection**.
  - **Size** – Select the widget size. You can choose between **Small**, **Medium**, and **Large**.



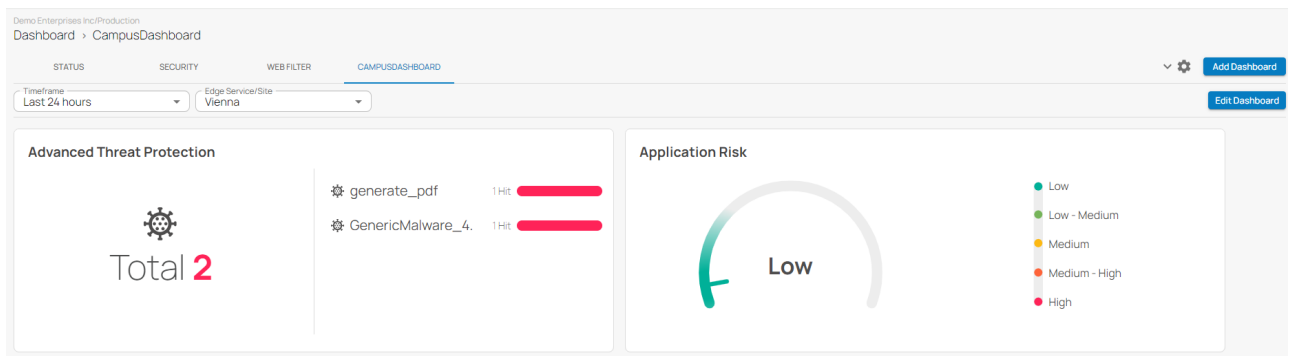
8. Click **Add**.

9. To add more widgets, click **Click to add widget!**



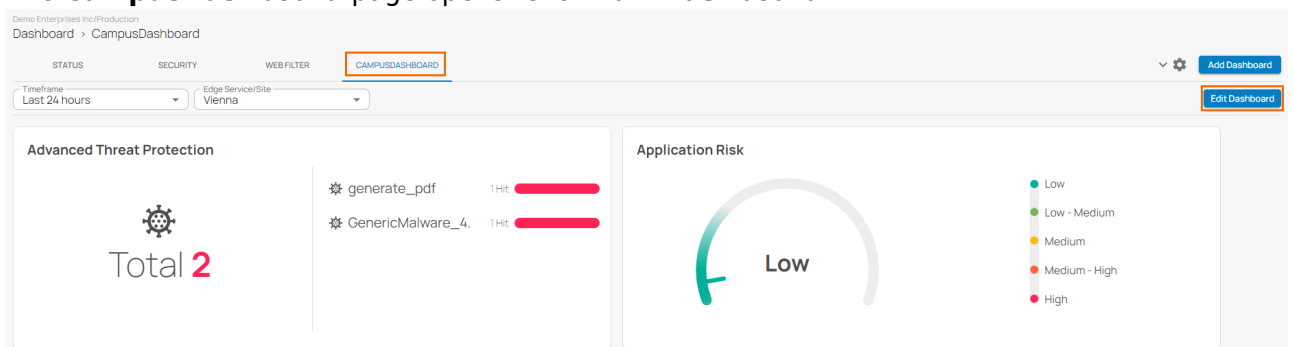
10. Click **Done**.

11. After the configuration is saved, the new dashboard is created and is now listed on the main **Dashboard** page. It can be accessed and customized by the responsible administrator. You can see the status of all added widgets/cards.

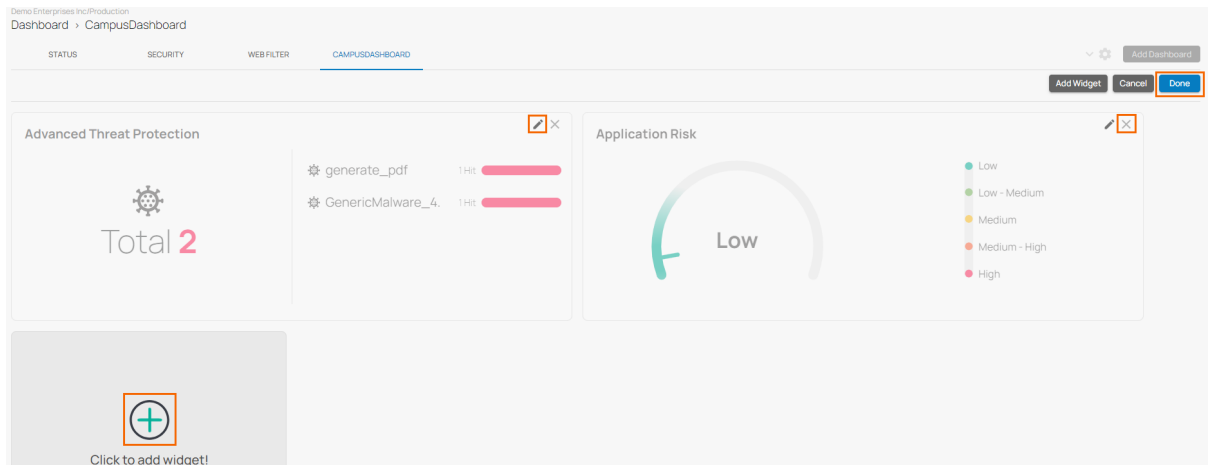


## Edit a Dashboard

1. Go to <https://se.barracudanetworks.com> and log in with your existing Barracuda Cloud Control account.
2. In the left menu, click the **Tenants/Workspaces** icon and select the workspace you want to edit a dashboard for.
3. Click the dashboard icon on the left and select the dashboard you want to edit. For example, in this case, select **CampusDashboard**.
4. The **CampusDashboard** page opens. Click **Edit Dashboard**.



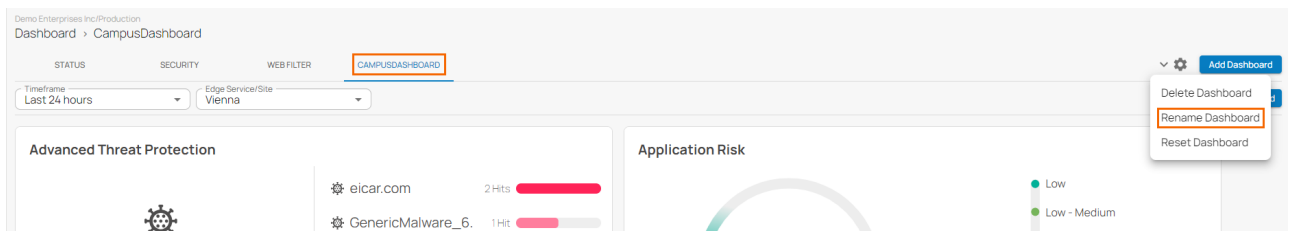
5. The **Edit** window for **CampusDashboard** opens. You can perform the following:
  - Move your widget or drag-and-drop the widget to a desired location.
  - You can edit the widget by clicking the pencil icon next to the widget you want to edit.
  - To remove an element from the dashboard, click the delete icon (X) on the top right of the element.
  - To add a new widget, click **Add Widget**.



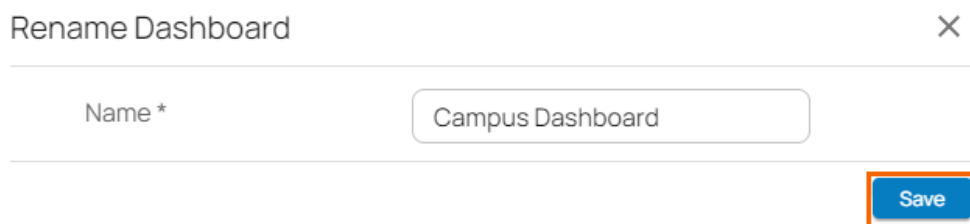
6. Click **Save**.
7. Click **Done** to save your settings.

## Rename a Dashboard

1. Go to <https://se.barracudanetworks.com> and log in with your existing Barracuda Cloud Control account.
2. In the left menu, click the **Tenants/Workspaces** icon and select the workspace you want to rename a dashboard for.
3. Click the dashboard icon on the left and select the dashboard you want to rename. For example, in this case, select **CampusDashboard**.
4. The **CampusDashboard** page opens. In the top-right corner, expand the **Cogwheel** icon and select **Rename Dashboard**.



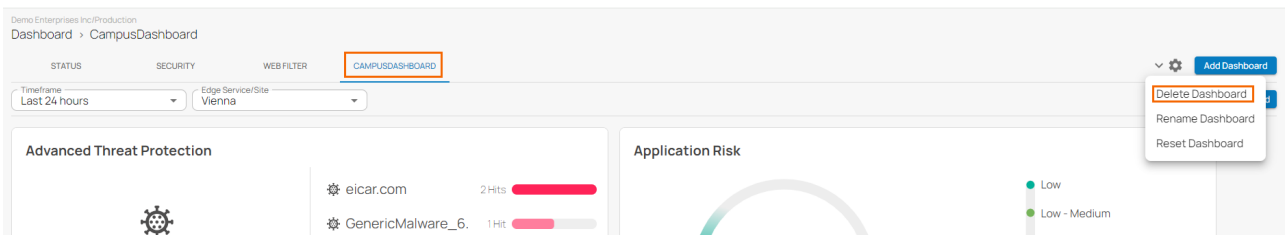
5. The **Rename Dashboard** window open. Specify values for the following:
  - **Name** – Enter the new name for your dashboard.



6. Click **Save**.

## Delete a Dashboard

1. Go to <https://se.barracudanetworks.com> and log in with your existing Barracuda Cloud Control account.
2. In the left menu, click the **Tenants/Workspaces** icon and select the workspace you want to remove a dashboard for.
3. Click the dashboard icon on the left and select the dashboard you want to remove. For example, in this case, select **CampusDashboard**.
4. The **CampusDashboard** page opens. In the top right corner, expand the **Cogwheel** icon and select **Delete Dashboard**.



5. The **Delete Dashboard** window opens.

## Delete Dashboard

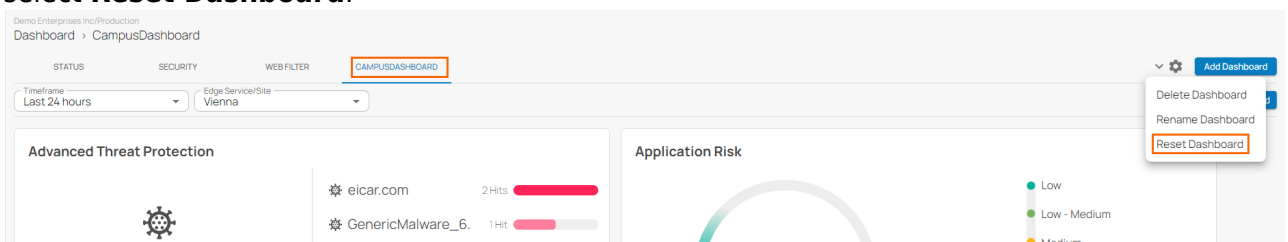
Do you really want to delete the 'CampusDashboard' dashboard?



6. Click **OK** to confirm.

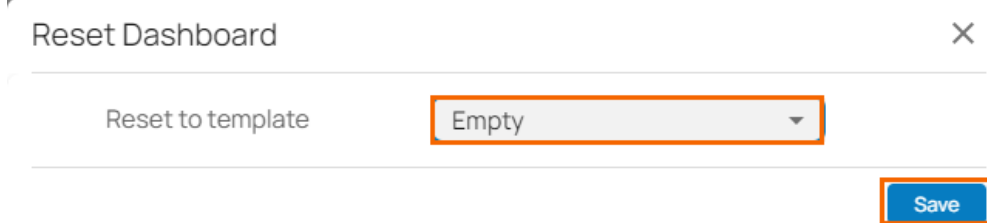
## Reset a Dashboard

1. Go to <https://se.barracudanetworks.com> and log in with your existing Barracuda Cloud Control account.
2. In the left menu, click the **Tenants/Workspaces** icon and select the workspace you want to reset a dashboard for.
3. Click the dashboard icon on the left and select the dashboard you want to reset. For example, in this case, select **CampusDashboard**.
4. The **CampusDashboard** page opens. In the top right corner, expand the **Cogwheel** icon and select **Reset Dashboard**.



5. The **Reset Dashboard** window opens. Specify a value for the following:

- **Reset to Template** – Select the template from the drop-down list. You can choose between **Status**, **Security**, **Web Filter**, and **Empty**.

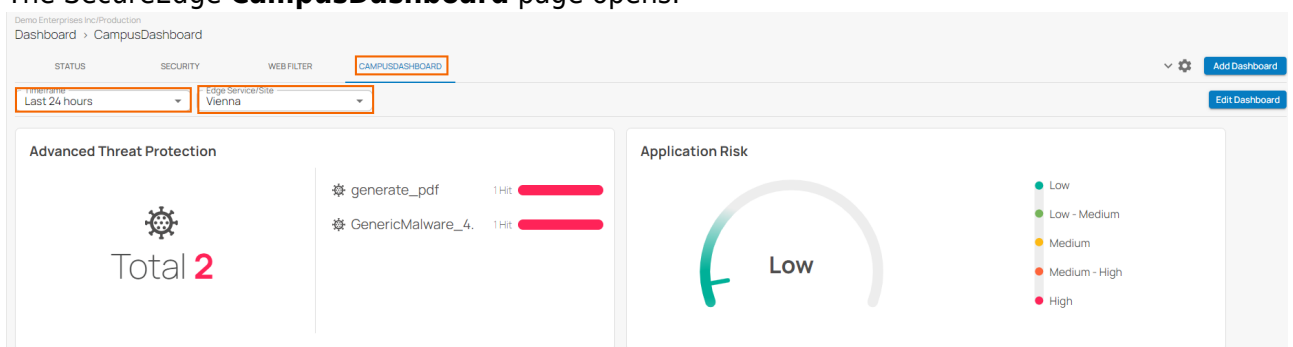


6. Click **Save** and reconfigure your selected dashboard.

## Accessing Information on the Dashboard

To access information on the dashboard, select the dashboard you wish to show the information for.

1. Go to <https://se.barracudanetworks.com> and log in with your existing Barracuda Cloud Control account.
2. In the left menu, click the **Tenants/Workspaces** icon and select the workspace you want to access information on the dashboard for.
3. Click the dashboard icon on the left and select your dashboard. For example, click **CAMPUSDASHBOARD**.
4. The **CampusDashboard** page opens. Specify the values for the following:
  - **Timeframe** – Select the desired time frame from the drop-down list. You can choose between **Last 24 hours**, **Last week**, or **Last month**.
  - **Edge Service / Site** – Select the edge service or site from the drop-down list.
5. The SecureEdge **CampusDashboard** page opens.



6. The **CampusDashboard** page organizes information into elements and provides the following details:
  - **Advanced Threat Protection**
  - **Application Risk**

For detailed information, see [Dashboard](#).

## Figures

1. dashboard.png
2. clickadd.png
3. CreateDashboard.png
4. clickaddwidget.png
5. ATP-widget.png
6. addwidgetdone.png
7. dashboardadded.png
8. modifycampusdb.png
9. modifycampuswindow.png
10. rename.png
11. clicksave.png
12. removedb.png
13. delconfirm.png
14. reset.png
15. emptysave.png
16. elements.png

© Barracuda Networks Inc., 2024 The information contained within this document is confidential and proprietary to Barracuda Networks Inc. No portion of this document may be copied, distributed, publicized or used for other than internal documentary purposes without the written consent of an official representative of Barracuda Networks Inc. All specifications are subject to change without notice. Barracuda Networks Inc. assumes no responsibility for any inaccuracies in this document. Barracuda Networks Inc. reserves the right to change, modify, transfer, or otherwise revise this publication without notice.