

How to Retrieve Stubbed Messages in Shared Mailboxes

<https://campus.barracuda.com/doc/12191883/>

This article refers to the Barracuda Message Archiver firmware version 5.2 or higher, and Barracuda Archive Search for Outlook version 5.2 or higher. Barracuda Archive Search for Outlook supports Outlook versions 2013, 2016, and 2019. **Note** that Outlook for Mac versions are not supported.

Verify Barracuda Archive Search for Outlook version (available for download on the **USERS > Client Downloads** page) is the *same major revision* as the Barracuda Message Archiver firmware.

Configuration Guidelines

This article is intended as a configuration *guideline*; your deployment will be specific to your environment. Any administrative changes should be reviewed with your IT team before proceeding .

Use the steps described in this article if Outlook users are able to forward stubbed attachments or emails from their *own* Outlook mailbox, but not from a *shared* Outlook mailbox. If this is the case, users will receive an error message from Outlook similar to: " **Unable to open original message** " when attempting to forward stubbed attachments from a shared Outlook mailbox.

By default, in Microsoft Outlook 2010 a security setting does not allow script execution or custom forms in shared mailboxes or public folders. For this reason, if the Microsoft Exchange Administrator performs message stubbing on shared mailboxes or public folders delegated to all users or specific user groups, these stubbed messages cannot be retrieved in Barracuda Archive Search for Outlook. To allow users to retrieve these stubbed messages in addition to their **INBOX** messages, each user can set Allow Script in shared folders, or the Microsoft Exchange Administrator can enable scripts in folders organization-wide using the Microsoft Office policy template (ADM) files.

Microsoft Outlook 2013 / 2016

In Microsoft Outlook 2013 and 2016, script execution is allowed by default.

Enable Scripting Organization-Wide (Recommended)

To enable scripts across your entire organization, see the Microsoft article [Office 2010 Administrative Template files \(ADM, ADMX/ADML\) and Office Customization Tool download](#), verify your operating system in the section *System requirements*, and following the steps described in the section *Instructions*.

Once you download and set up the ADM template files, open the ADM file **outlk14.adm**.

In the ADM file, set VALUEON NUMERIC to ' 1' and VALUEOFF NUMERIC to ' 0' for the following values:

- VALUENAME SharedFolderScript
- VALUENAME PublicFolderScript

For example:

```
POLICY !L_DisableOutlookobjectmodelscripts
```

```
KEYNAME Software\Policies\Microsoft\Office\14.0\Outlook\Security
```

```
VALUENAME SharedFolderScript
```

```
VALUEON NUMERIC 1
```

```
VALUEOFF NUMERIC 0
```

```
EXPLAIN !L_DisableOutlookobjectmodelscriptsExplain
```

```
END POLICY
```

```
POLICY !L_DisableOutlookobjectmodelscriptsforpublicfolders
```

```
KEYNAME Software\Policies\Microsoft\Office\14.0\Outlook\Security
```

```
VALUENAME PublicFolderScript
```

```
VALUEON NUMERIC 1
```

VALUEOFF NUMERIC 0

EXPLAIN !L_DisableOutlookobjectmodelscripfsforpublicfoldersExplain

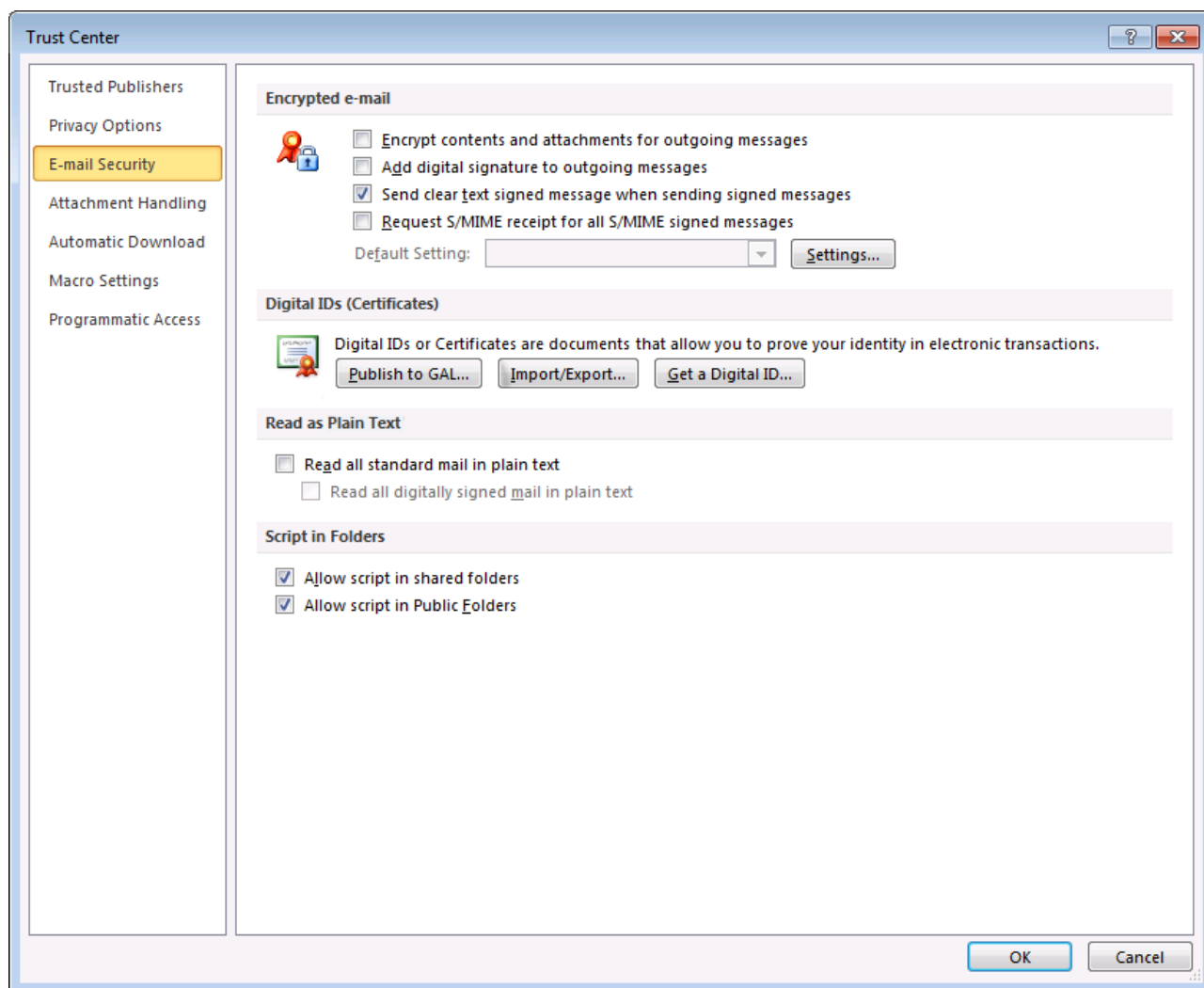
END POLICY

END CATEGORY

Enable Scripts on User Systems

If you do not wish to use ADM templates to allow scripting across the entire organization, you can direct each user to enable scripts for shared and public folders. Use the following steps to enable scripts in shared and public folders in Outlook 2010:

1. Log in to Microsoft Outlook 2010.
2. On the **File** menu, click **Options**.
3. In the Navigation Pane, click **Trust Center**, and then click **Trust Center Settings**.
4. In the Navigation Pane, click **E-mail Security**, and in the **Script in Folders** section, select **Allow script in shared folders** and **Allow script in Public Folders**:



5. Click **OK** to save your settings.

Figures

1. encrypt_email.png

© Barracuda Networks Inc., 2024 The information contained within this document is confidential and proprietary to Barracuda Networks Inc. No portion of this document may be copied, distributed, publicized or used for other than internal documentary purposes without the written consent of an official representative of Barracuda Networks Inc. All specifications are subject to change without notice. Barracuda Networks Inc. assumes no responsibility for any inaccuracies in this document. Barracuda Networks Inc. reserves the right to change, modify, transfer, or otherwise revise this publication without notice.