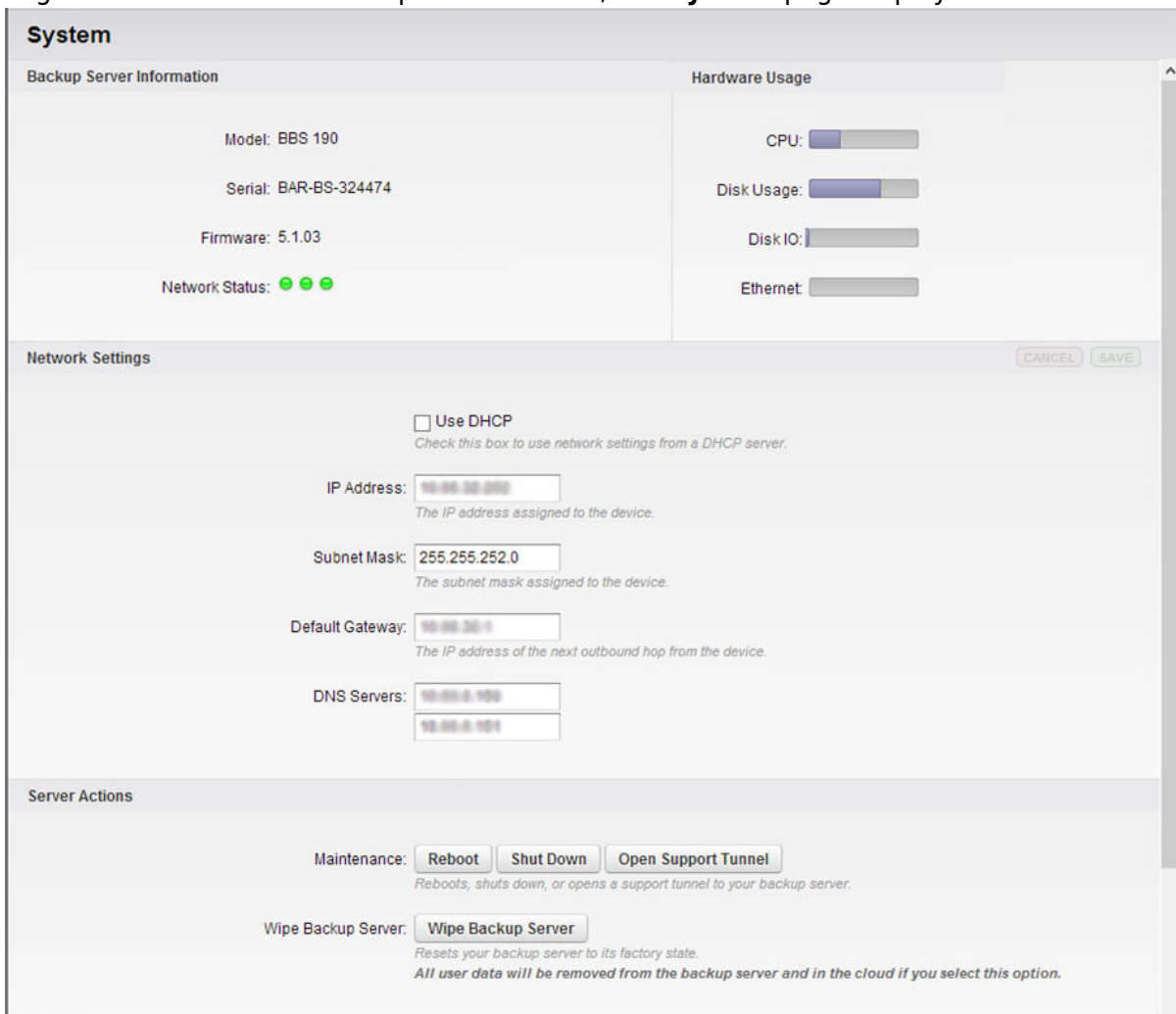


Restore Data Using the Local Web Interface

<https://campus.barracuda.com/doc/12898/>

You can restore data using the Barracuda Backup local web interface. Note that the local web interface does not require an Internet connection which may improve performance.

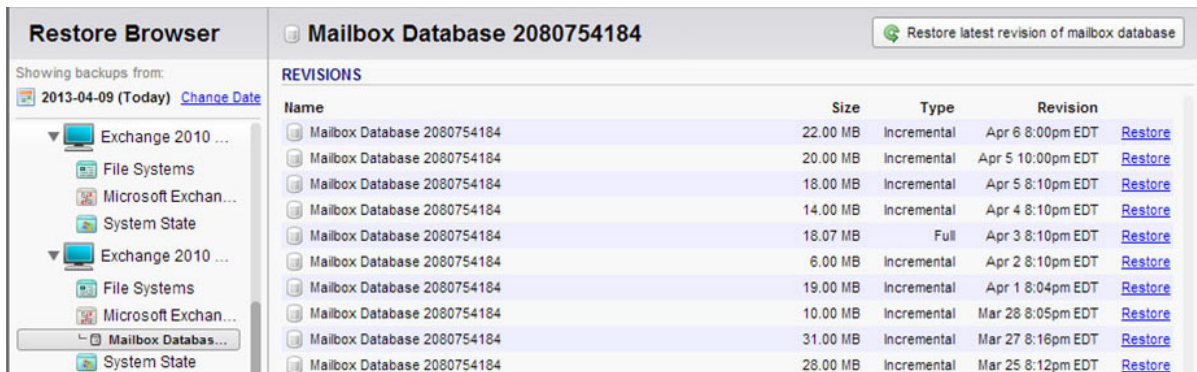
1. Open a web browser, and enter the Barracuda Backup appliance IP address.
2. Log in to the Barracuda Backup web interface; the **System** page displays:



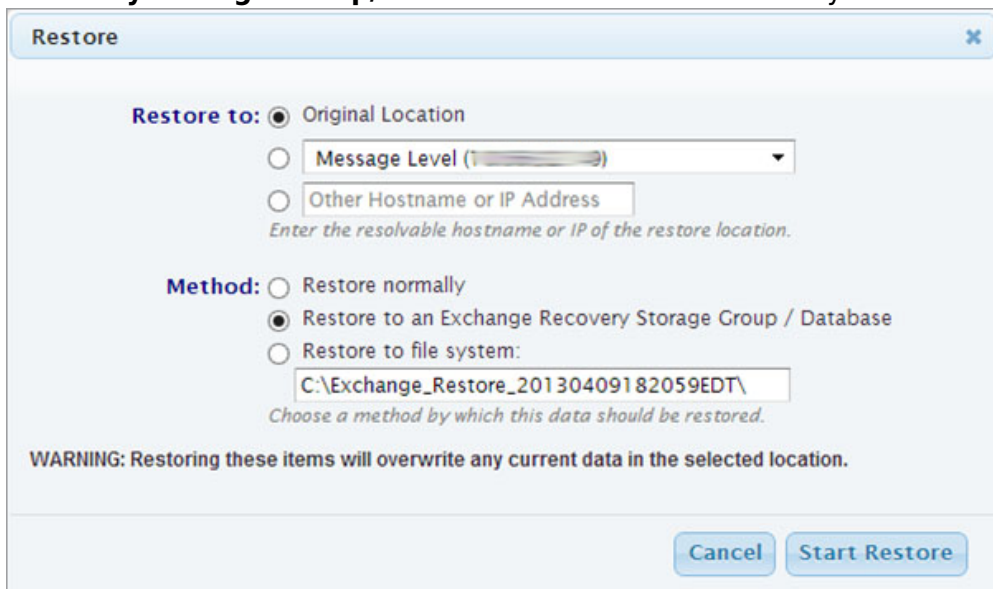
The screenshot shows the 'System' page of the Barracuda Backup web interface. It is divided into several sections:

- Backup Server Information:** Model: BBS 190, Serial: BAR-BS-324474, Firmware: 5.1.03, Network Status: three green circles.
- Hardware Usage:** CPU, Disk Usage, Disk IO, and Ethernet, each with a progress bar.
- Network Settings:** Includes a 'Use DHCP' checkbox (unchecked), and input fields for IP Address (10.00.20.200), Subnet Mask (255.255.252.0), Default Gateway (10.00.20.1), and DNS Servers (10.00.0.100 and 10.00.0.101). 'CANCEL' and 'SAVE' buttons are visible.
- Server Actions:** Includes 'Maintenance' buttons (Reboot, Shut Down, Open Support Tunnel) and a 'Wipe Backup Server' button.

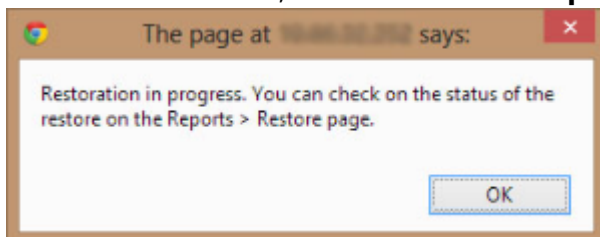
3. Click the **Restore** tab, and select the server from which to restore data. In the following example, a Microsoft Exchange Database is selected:



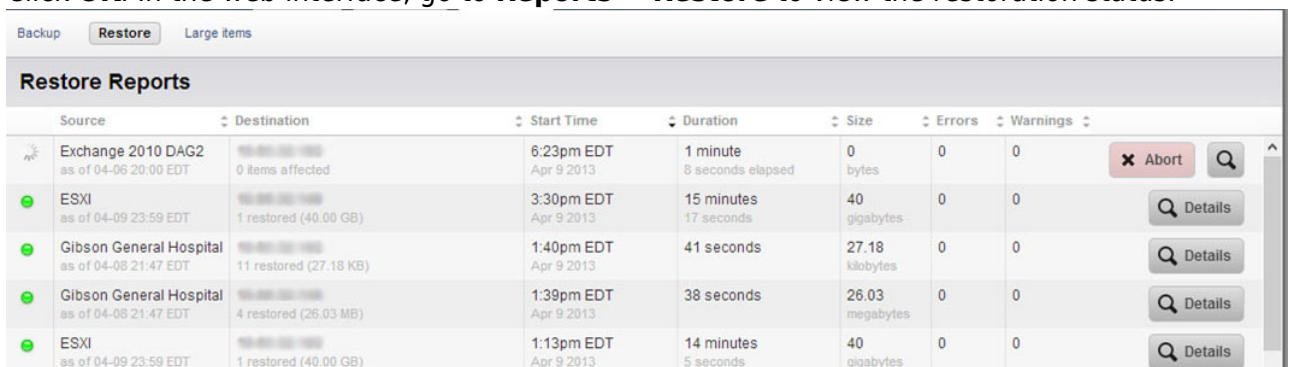
- Click the **Restore** link to the right of the data you want to restore; the **Restore** window displays. Select the **Restore to** and **Method** for restoring the data, for example, select **Original Location** to select the original server, and select **Restore to an Exchange Recovery Storage Group/Database** to restore to a recovery database:



- Click **Start Restore**; the **Restoration in progress** window displays:



- Click **OK**. In the web interface, go to **Reports > Restore** to view the restoration status:



7. Once the restore is complete, the left column displays a green indicator (🟢) next to the restored data source.

Figures

1. system_page.jpg
2. mailbox_db.jpg
3. restoredialog.png
4. msgdialog.png
5. restore_reports.jpg
6. indicatorlight.png

© Barracuda Networks Inc., 2026 The information contained within this document is confidential and proprietary to Barracuda Networks Inc. No portion of this document may be copied, distributed, publicized or used for other than internal documentary purposes without the written consent of an official representative of Barracuda Networks Inc. All specifications are subject to change without notice. Barracuda Networks Inc. assumes no responsibility for any inaccuracies in this document. Barracuda Networks Inc. reserves the right to change, modify, transfer, or otherwise revise this publication without notice.