

## How to Activate Network Changes

<https://campus.barracuda.com/doc/17254/>

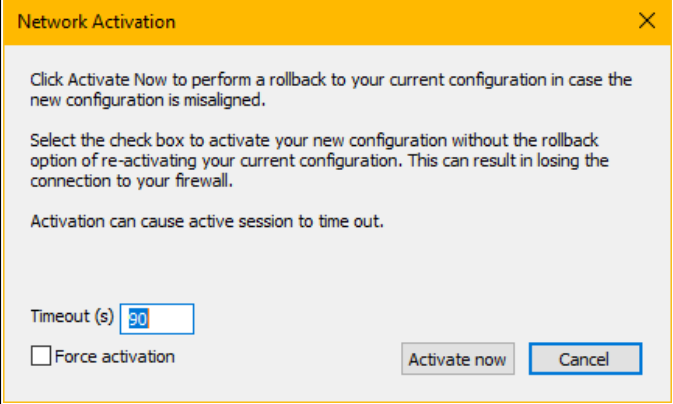
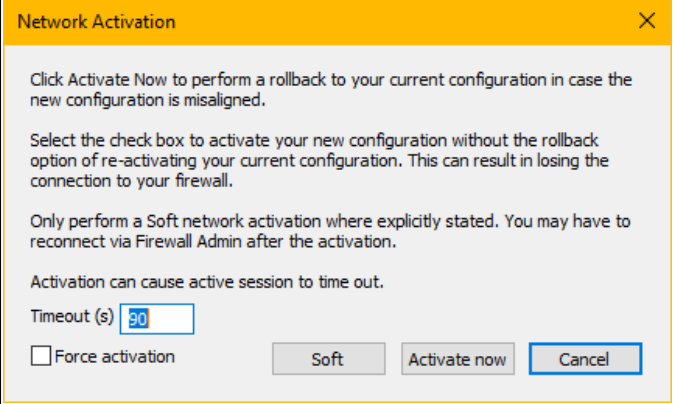
After changing the configuration of the network subsystem, you must activate the new network configuration. Depending on the type of network or IP address, you will be prompted with a dialog window presenting you with different options for activating the changes.

The Network Activation window will be displayed in one of two possible variants (**Box Level Activation vs. Soft Activation**), where each dialog window includes a check box with the name **Force Activation**. The state of this checkbox directs the firewall to either perform (**Force Activation** is unselected) or to omit (**Force Activation** is selected) a rollback, that is restoring the last valid configuration before the requested change takes effect.

### Network Activation with and without Rollback

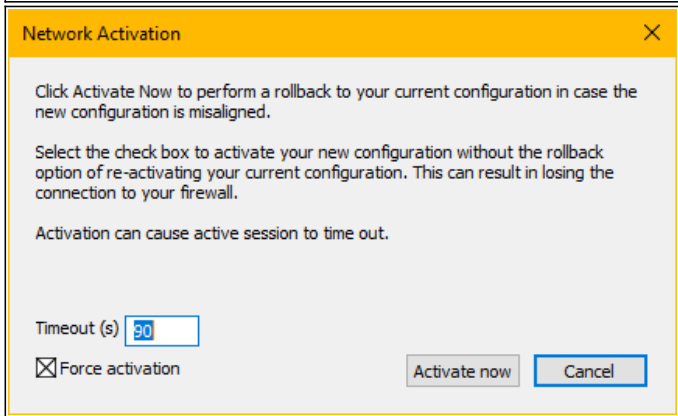
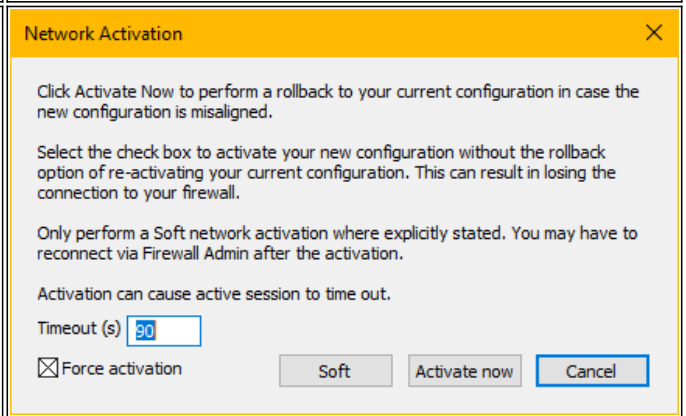
#### Network Activation with Rollback

If the check box is not activated (see also help text in the window), the two following options are available:

Box Level Activation	Soft Activation
	
<p>Used for changes that affect network or IP addresses on the box level. A roll-back is possible if the new configuration fails.</p>	<p>The <b>Soft</b> button will be displayed for changes if a restart of the basic network subsystem can be avoided. Note: The roll-back option relates exclusively to the <b>Activate now</b> button!</p>

#### Network Activation without Rollback

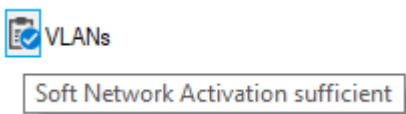
If the check box is activated (see also help text in the window), the new configuration will be activated without the option of a roll-back:

Box Level Activation	Soft Activation
 <p>The screenshot shows a dialog box titled "Network Activation" with a close button (X). The text inside reads: "Click Activate Now to perform a rollback to your current configuration in case the new configuration is misaligned. Select the check box to activate your new configuration without the rollback option of re-activating your current configuration. This can result in losing the connection to your firewall. Activation can cause active session to time out." Below this is a "Timeout (s)" input field with the value "30" and a checked checkbox for "Force activation". At the bottom are "Activate now" and "Cancel" buttons.</p>	 <p>The screenshot shows a dialog box titled "Network Activation" with a close button (X). The text inside reads: "Click Activate Now to perform a rollback to your current configuration in case the new configuration is misaligned. Select the check box to activate your new configuration without the rollback option of re-activating your current configuration. This can result in losing the connection to your firewall. Only perform a Soft network activation where explicitly stated. You may have to reconnect via Firewall Admin after the activation. Activation can cause active session to time out." Below this is a "Timeout (s)" input field with the value "30" and a checked checkbox for "Force activation". At the bottom are "Soft", "Activate now", and "Cancel" buttons.</p>
<p>Used for changes that affect network or IP addresses on the box level. A roll-back is not possible if the new configuration fails.</p>	<p>The <b>Soft</b> button will be displayed for changes if a restart of the basic network subsystem can be avoided. Note: The roll-back option relates exclusively to the <b>Activate now</b> button!</p>

## Soft Activation

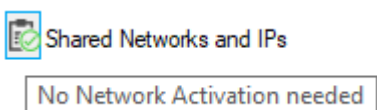
When adding or making changes to a network or IP address, the network subsystem has to be restarted to activate the new configuration. However, there are several use cases in which it is sufficient to just activate the configuration on the fly without requiring a complete network subsystem restart. In such cases, the **Network Activation** window will additionally display the **Soft** button. You then have the choice of restarting the network subsystem completely (=Activate Now) or partially (=Soft).

Soft Activation will also be indicated at different places in the UI with the following icon, e.g. VLANs, and others:



## No Network Activation (vs. Soft Activation)

In certain cases, no network activation will be required. This will also be indicated at different places in the UI with the following icon, e.g. **Shared Network and IPs**:



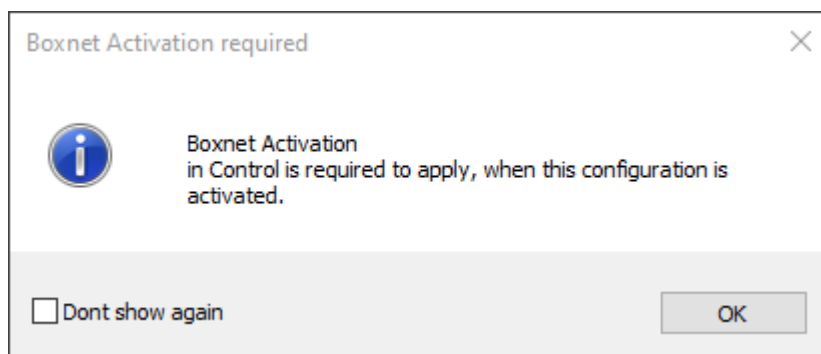
---

## Network Activation with Changes to the Management IP Address

---

The following dialog window will be displayed for firmware release versions larger or equal to 8.3.

Changes made to the Management IP address directly affect the network subsystem on box-level. You will be notified about this with an appropriate message in a dialog window after clicking the button **Send Changes**:



To activate the change, you must switch to **CONTROL > Box** and follow the instructions as described below: **How to Activate Network Configuration Changes on Box Level**.

If you are aware that a change of the management IP address requires a restart of the box-level network subsystem, you can activate the checkbox **Don't show again**. The window will no longer be displayed at that point. If you want to reverse this setting, reset the setting in **Firewall Admin > Settings > Client Settings**, section **Restore defaults**, by clicking the button **Restore Dialog Positions**.

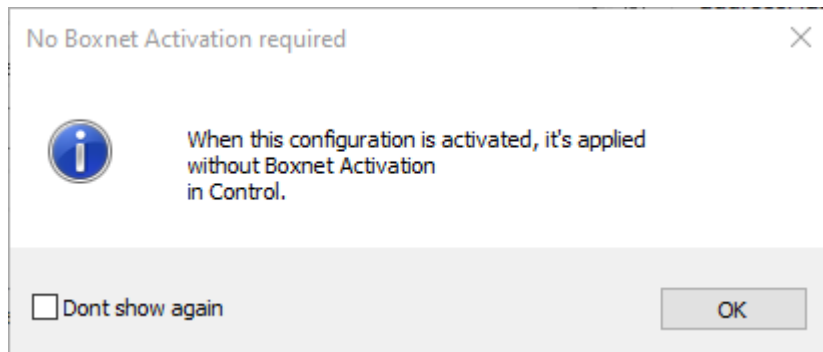
---

## Network Activation Without Changes to the Management IP Address

---

The following dialog window will be displayed for firmware release versions larger or equal to 8.3.

Changes made to the non-box-level network and IP addresses will not require a restart of the complete network subsystem. Instead, you will be notified with a dialog window after clicking the button **Send Changes**:



If you are aware that a change to non-box-level network and IP addresses can be applied without restarting the complete network subsystem, you can click the checkbox **Don't show again**. The window will no longer be displayed at that point. If you want to reverse this setting, reset the setting in **Firewall Admin > Settings > Client Settings**, section **Restore defaults**, by clicking the button **Restore Dialog Positions**.

## How to Activate Network Configuration Changes on Box Level

1. Go to **CONTROL > Box**.
2. In the left menu, expand the **Network** section and click **Activate new network configuration**.
3. Select the desired activation mode.

After activation, the network might briefly show an error state until all connections are established.

After the process has finished, Barracuda Firewall Admin attempts to connect to the new management IP address.

## Figures

1. network\_activation\_activate\_now\_wo\_soft.png
2. network\_activation\_activate\_now\_and\_soft\_no\_force.png
3. network\_activation\_activate\_now\_with\_force\_wo\_soft.png
4. network\_activation\_activate\_now\_and\_soft\_with\_force.png
5. network\_activation\_soft\_activation\_needed\_icon.png
6. network\_activation\_no\_activation\_needed\_icon.png
7. network\_activation\_dialog\_window\_for\_mip\_change.png
8. fwa\_dialog\_no\_boxnet\_activation\_required\_after\_shared\_ip.png
9. new\_network\_activation\_2.png

© Barracuda Networks Inc., 2026 The information contained within this document is confidential and proprietary to Barracuda Networks Inc. No portion of this document may be copied, distributed, publicized or used for other than internal documentary purposes without the written consent of an official representative of Barracuda Networks Inc. All specifications are subject to change without notice. Barracuda Networks Inc. assumes no responsibility for any inaccuracies in this document. Barracuda Networks Inc. reserves the right to change, modify, transfer, or otherwise revise this publication without notice.