

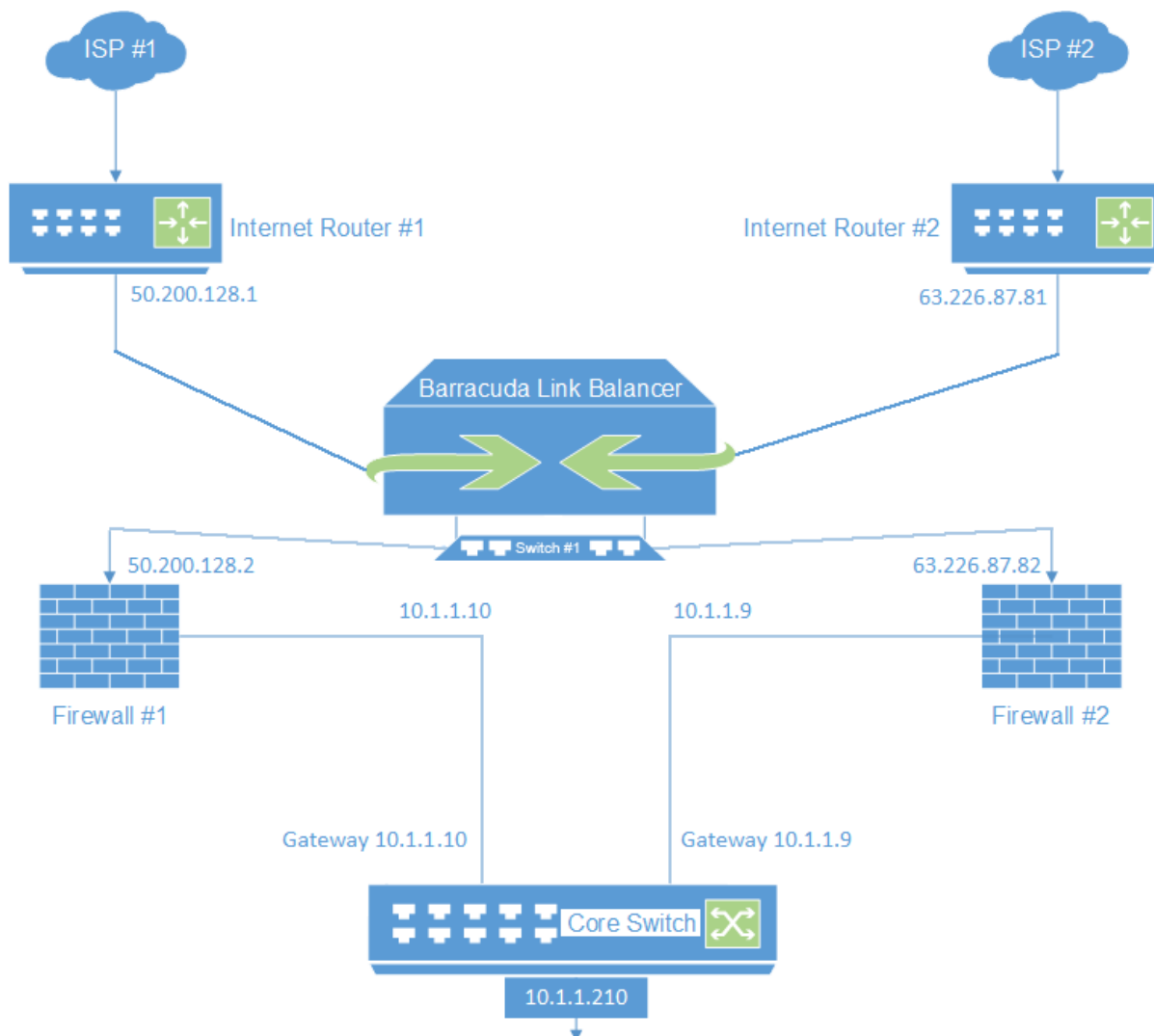
## Configuring the Barracuda Link Balancer for Two Independent ISP Links and Firewalls

<https://campus.barracuda.com/doc/30572892/>

This article provides steps for inserting a Barracuda Link Balancer into an existing network so that the LAN is fed by two independent Internet links through two independent firewalls.

### Example Setup and IP Addresses

The following diagram shows the example configuration used in this article:



This example uses these IP addresses and subnets:

WAN 1		
1	Internet Router #1	50.200.128.1
2	Internet Router #2	63.226.87.81
2	Firewall #1 external	50.200.128.2
3	Firewall #1 internal	10.1.1.10
5	Firewall #2 external	63.226.87.82
6	Firewall #2 internal	10.1.1.9
7	Core Switch	10.1.1.210

## Step 1. Connect and Configure the LAN and WAN Links on the Barracuda Link Balancer

1. On the Barracuda Link Balancer connect Switch #1 to the **LAN** port.
2. On the Barracuda Link Balancer, connect router #1 to the **WAN1** port, and router #2 to the **WAN2** port.
3. Go to the **BASIC > Links** page, and configure the IP address, netmask, gateway, DNS, and health check settings for both WAN links.

## Step 2. Connect and Configure the Firewalls

Connect Switch #1 to firewall #1 and firewall #2.

In this example, the external IP addresses are 50.200.128.2 for firewall #1 and 63.226.87.81 for firewall #2. The internal IP addresses are 10.1.1.10 for firewall #1 and 10.1.1.9 for firewall #2.

## Usage Modes

This setup provides the following gateway IP addresses:

- 10.1.1.210 for clients to access a cumulative Internet uplink using both ISPs filtered separately through both firewalls.
- 10.1.1.10 for clients to access ISP #1 filtered by firewall #1.
- 10.1.1.9 for clients to access ISP #2 filtered by firewall #2.

## Figures

1. diag\_bwb-with-2-independent-wans-and-fws\_v3.png

© Barracuda Networks Inc., 2024 The information contained within this document is confidential and proprietary to Barracuda Networks Inc. No portion of this document may be copied, distributed, publicized or used for other than internal documentary purposes without the written consent of an official representative of Barracuda Networks Inc. All specifications are subject to change without notice. Barracuda Networks Inc. assumes no responsibility for any inaccuracies in this document. Barracuda Networks Inc. reserves the right to change, modify, transfer, or otherwise revise this publication without notice.