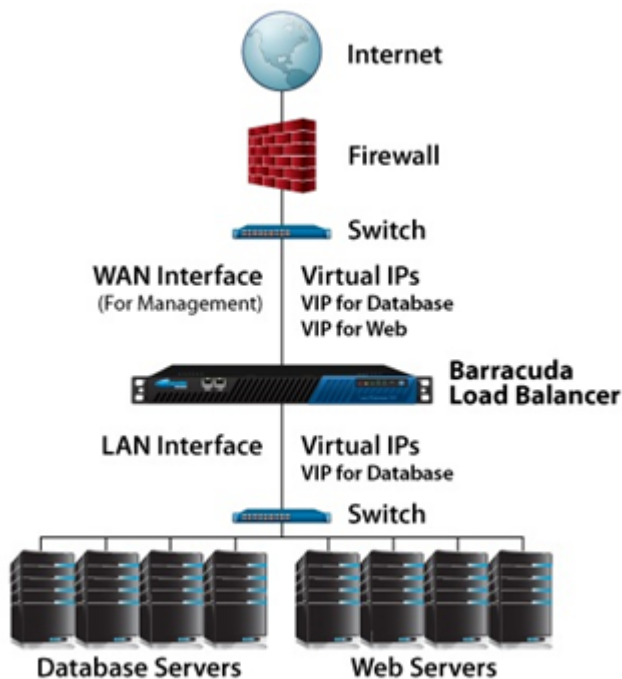


Two-Armed Route-Path Using TCP Proxy, UDP Proxy, or a Layer 7 Service Type

<https://campus.barracuda.com/doc/3539019/>

Two-armed Route-Path with a Service with type Layer 7 - RDP is the recommended configuration when deploying the Barracuda Load Balancer in a Microsoft Terminal Services environment. Figure 1 shows a network where there are Virtual IP addresses available on both the WAN and LAN side. Clients coming from the Internet or intranet can access the database or web Service. On the LAN side, the web servers can access the database Service.

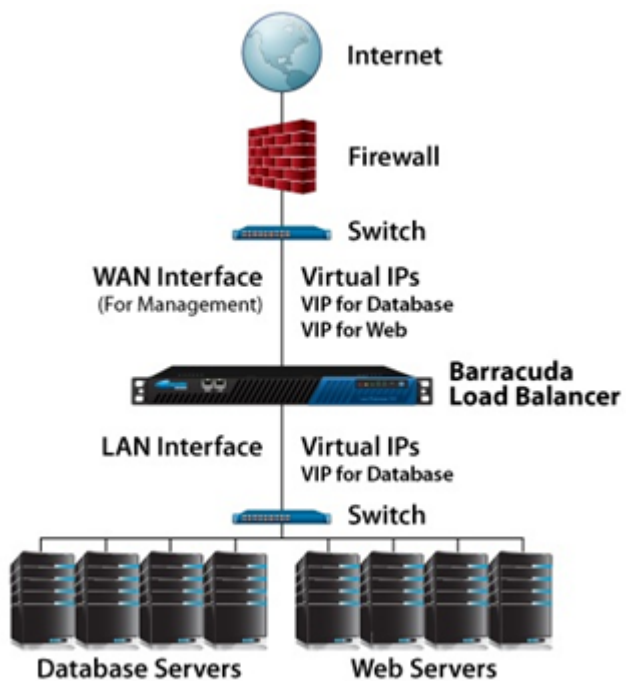


Related Articles

- [Deployment Options](#)
- [Route-Path Deployment Options](#)
- [Sample Route-Path Deployment Network Situations](#)
- [One-Armed Route-Path Using TCP Proxy, UDP Proxy, or a Layer 7 Service Type](#)
- [Route-Path Configured with](#)

- [TCP Proxy, UDP Proxy, or a Layer 7 Service Type](#)
- [Two-Armed Route-Path with Layer 4 Load Balancing](#)

Figure 1. Two-armed TCP Proxy, UDP Proxy, or Layer 7 Service.



Figures

1. 2 arm.png
2. 2 arm.png

© Barracuda Networks Inc., 2019 The information contained within this document is confidential and proprietary to Barracuda Networks Inc. No portion of this document may be copied, distributed, publicized or used for other than internal documentary purposes without the written consent of an official representative of Barracuda Networks Inc. All specifications are subject to change without notice. Barracuda Networks Inc. assumes no responsibility for any inaccuracies in this document. Barracuda Networks Inc. reserves the right to change, modify, transfer, or otherwise revise this publication without notice.