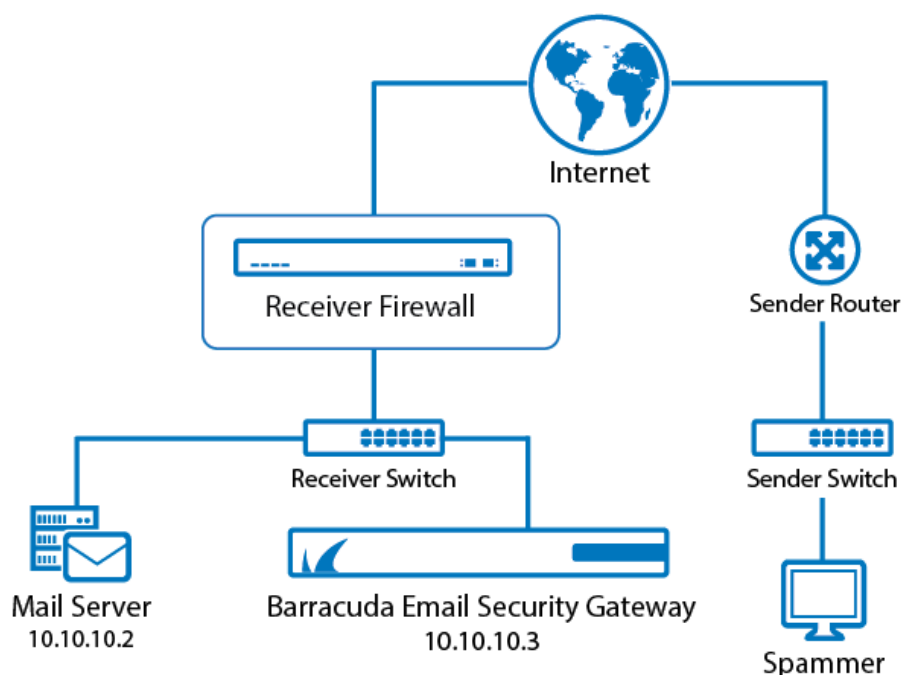


Deployment Behind the Corporate Firewall

<https://campus.barracuda.com/doc/3866640/>

The figure below shows the Barracuda Email Security Gateway behind your corporate firewall. In this example, the Mail Server has an IP address of 10.10.10.2 and the Barracuda Email Security Gateway has an IP address of 10.10.10.3.

Figure 1: The Barracuda Email Security Gateway behind the corporate firewall.



In this type of setup, perform the following tasks:

1. Forward (port redirection) incoming SMTP traffic on port 25 to the Barracuda Email Security Gateway at 10.10.10.3.
2. Configure the Barracuda Email Security Gateway to forward filtered messages to the destination mail server at 10.10.10.2.

There is no need to modify any MX records for this type of setup.

Continue with [Step 2 - Install the Barracuda Email Security Gateway](#).

Figures

1. BESG_firewall.png

© Barracuda Networks Inc., 2024 The information contained within this document is confidential and proprietary to Barracuda Networks Inc. No portion of this document may be copied, distributed, publicized or used for other than internal documentary purposes without the written consent of an official representative of Barracuda Networks Inc. All specifications are subject to change without notice. Barracuda Networks Inc. assumes no responsibility for any inaccuracies in this document. Barracuda Networks Inc. reserves the right to change, modify, transfer, or otherwise revise this publication without notice.