
Using the Network Connector with macOS

<https://campus.barracuda.com/doc/39814769/>

Follow these instructions to install the network connector on your Mac:

Step 1. Install the Mac client

1. Open the **RESOURCES > My Network Connector** page.
2. Click the **Download Mac Client** button. You will be prompted to either *Run* or *Save* the installer (.dmg file).
3. Launch the installer once the installation package downloads, and select all default settings as you continue through the installation.

Once installed, the Network Connector is ready for use by any user on the remote system who is logged in through the web interface of the Barracuda SSL VPN.

Step 2. Install the client configuration file

A client configuration file for the Network Connector is required only when using the Network Connector in stand-alone mode.

To be able to run this client in stand-alone mode, or without requiring an explicit login through the web interface, you must install a configuration file for the client on the remote system.

1. Log back into the [Administrative Interfaces](#).
2. Go to the **RESOURCES > My Network Connector** page.
3. Hover over the icon for the client configuration file in the **My Network Connector** section. A list of actions will appear.
4. Select **Install Client Configuration file**. When installing the configuration file, you may be presented with various warnings depending on the security level that is configured on your system. Accept the warnings as they appear in order to continue with the installation.

Step 3. Launch the Network Connector client

1. Select **Finder > Applications > Network Connector**. A gray network icon will appear in the top right of your screen.
2. Click the network icon and choose **Connect LAN1 Client** (where *LAN1* may be a different

network name, depending on how it was configured by *ssladmin*).

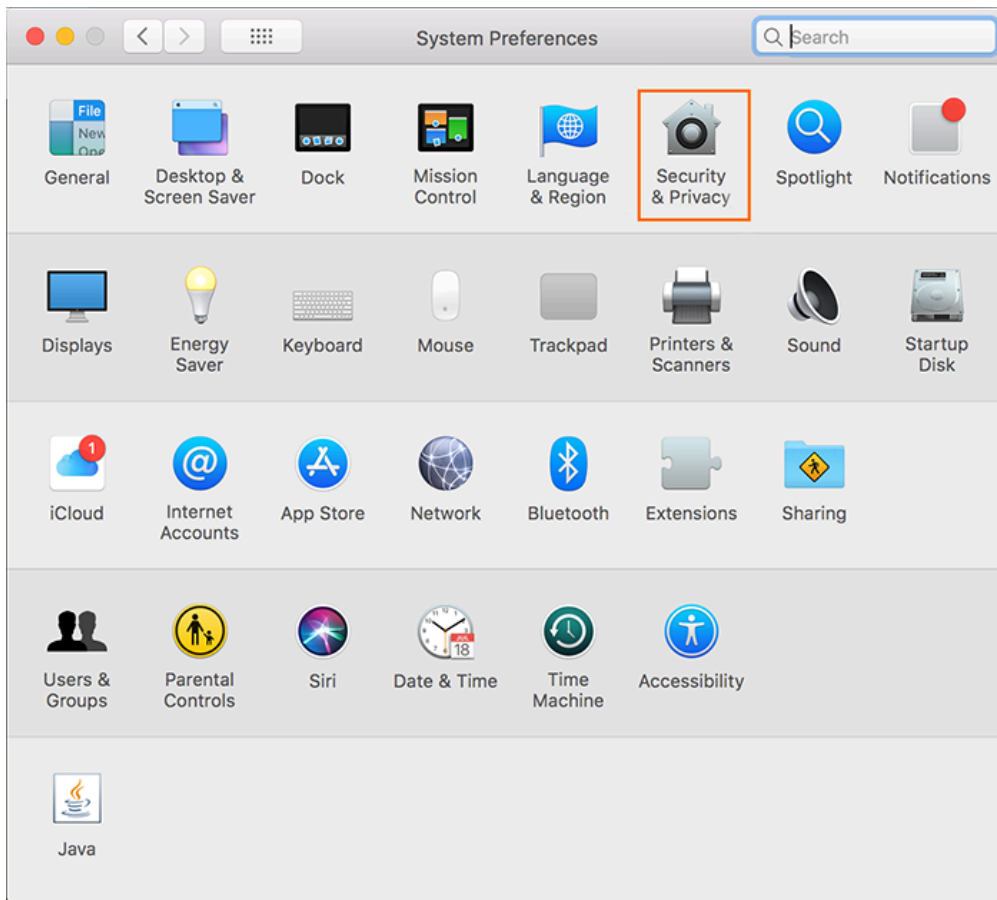
3. Enter your username and password when prompted, and click **OK**.

Troubleshooting

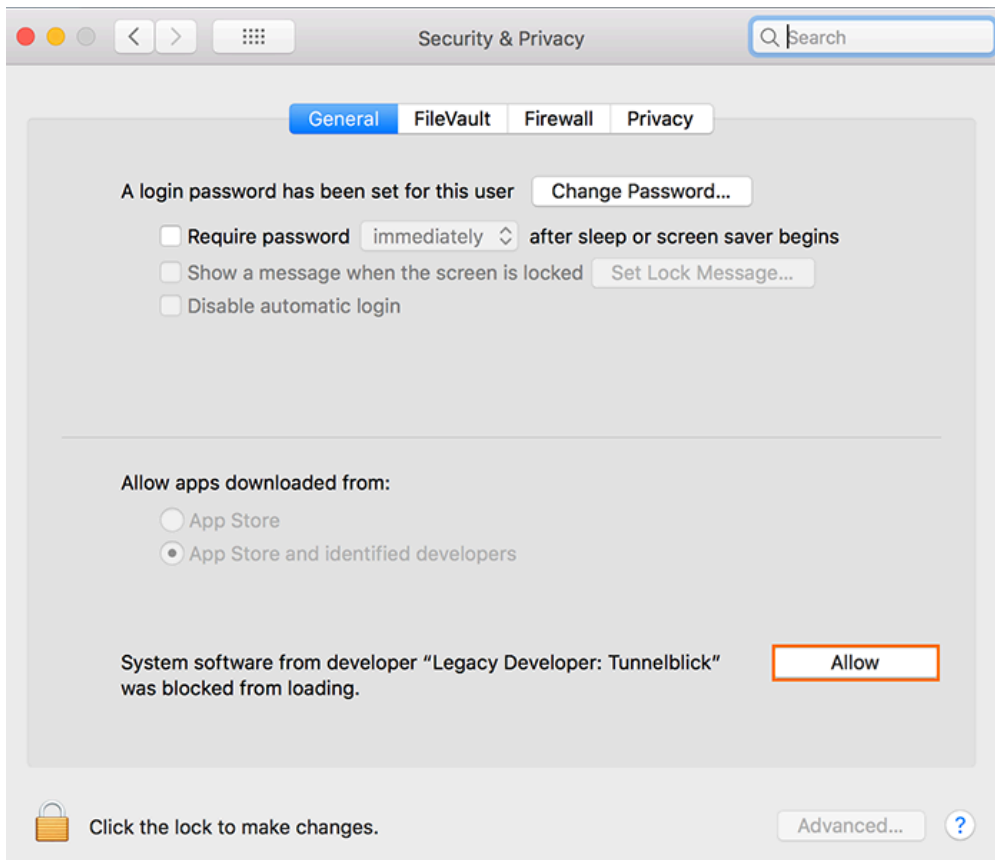
If you have not used the Network Connector before, it could happen that the first launch fails because the system does not accept the Network Connector driver. You will then see a warning message:



1. Go to **System Preferences > Security & Privacy**.



A message is displayed, stating that the software is blocked from loading.



2. Click **Allow** to accept the Network Connector driver.

This option is only available for 30 minutes from the first launch of Network Connector. To perform this step again, you must reboot your Mac, launch Network Connector again, and then open the **System Preferences > Security & Privacy** configuration.

Figures

1. driver_fail1.png
2. driver_fail2.png
3. driver_fail3.png

© Barracuda Networks Inc., 2021 The information contained within this document is confidential and proprietary to Barracuda Networks Inc. No portion of this document may be copied, distributed, publicized or used for other than internal documentary purposes without the written consent of an official representative of Barracuda Networks Inc. All specifications are subject to change without notice. Barracuda Networks Inc. assumes no responsibility for any inaccuracies in this document. Barracuda Networks Inc. reserves the right to change, modify, transfer, or otherwise revise this publication without notice.