

Option 3 - Command Line with Custom Deployment

<https://campus.barracuda.com/doc/39821496/>

This article refers to the Barracuda Message Archiver firmware version 5.1.x; the PST Collector is not available in firmware release 5.2 and newer.

Use this deployment option if you do not want to deploy with ADMX and GPO. This article describes how to deploy the PST Collector using custom means such as the System Center Configuration Manager (SCCM).

For additional deployment options, refer to the [Barracuda PST Collector Deployment Options](#).

Before Getting Started

The Barracuda Message Archiver can enable a local SMB/CIFS share called **BarracudaMessageArchiverPstDrop** to use for uploading .pst files for archiving. You must open ports 139 and 445 to the Barracuda Message Archiver to use PST Import via a SMB/CIFS share.

Automatic End-User PST Assignment

When the Barracuda PST Collector submits a PST file to the Barracuda Message Archiver, the user's security identifier (SID), obtained from the Windows User Profile, is collected and stored. If no user SID is available at the time the PST is sent to the PST Server, automatic user assignment is not performed. However, if PST auto-assignment is unavailable, the administrator can manually assign a PST to an active AD user by right-clicking on the PST file in the **BASIC > Search** page in the **PSTs & Tags** tab. Note that auto-assignment occurs only if:

- The PST file is owned by a domain user at the file system level
- The PST file is located somewhere in a profile directory of a domain user

Important

All new installations require some initial synchronization tasks to be performed between the Microsoft Exchange Server and the Barracuda Message Archiver. These tasks, including the direct import of messages, stubbing, and folder synchronization, can take a fair amount of time to complete. The Barracuda Message Archiver prioritizes these tasks over processing collected PST files. Therefore, to reduce network traffic as well as potential load on the Barracuda Message Archiver, and to ensure that even the newest PST files are imported, it is *highly recommended* that PST collection begin *after* all such initial integration tasks are complete.

There is a 100MB limit per mail item when importing from a PST file.

Enable PST Collection on the Barracuda Message Archiver

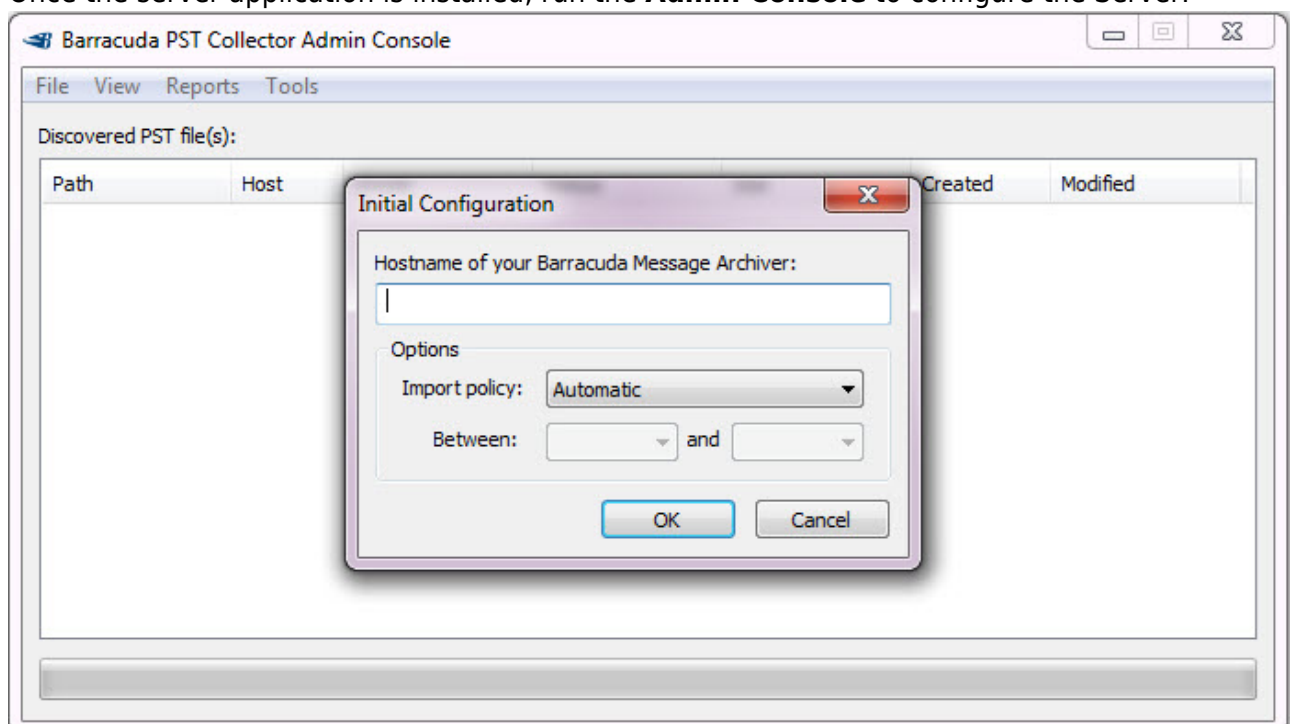
Use the following steps to enable PST collection on the Barracuda Message Archiver.

1. Log into your Barracuda Message Archiver as *admin*, and navigate to the **MAIL SOURCES > PST Import** page.
2. In the **PST Import Options** section, set the **Enable PST Collector** option to Yes. Note that this feature *does not* require **Enable Local SMB Share** for PST imports to be enabled as the Collector uses a separate import directory.

Install the Barracuda PST Collector Server

Use the following steps to download, install, and configure the Barracuda PST Collector Server.

1. While still logged into your Barracuda Message Archiver as *admin*, navigate to the **USERS > Client Downloads** page.
2. Download and install the server application on a Microsoft Windows-based system in your environment that can be reached by all the systems on which the client application is to be deployed. Note that this need not be an actual server, nor does it need any special configuration; you can even use a virtual machine (VM) to function as the Server.
3. Once the server application is installed, run the **Admin Console** to configure the Server:



4. Enter the hostname (not the URI) of your Barracuda Message Archiver, for example:
`https://archiver.company.com`
5. Select the desired import policy for PSTs:
 - **Automatic** – All PSTs are approved for transfer without any further interaction from a system administrator. Recommended.
 - **Manual** – A PST is approved for transfer only if that PST has been manually marked for transfer using the Admin Console. This setting always requires administrative input as each discovered PST file must be explicitly marked for import. This setting is typically used for importing only specific PST files, manually prioritizing specific PST files over others, or during testing of the Barracuda PST Collector in your environment.
 - **Scheduled** – A PST is approved for transfer only if the request occurs within a configured time window. This setting is typically used to restrict PST transfers to a specified time period when there is less traffic, such as after business hours.

Configure the Barracuda PST Collector Client

Use the following steps to configure the Barracuda PST Collector Client.

1. While still logged into your Barracuda Message Archiver as *admin*, navigate to the **USERS > Client Downloads** page, and download the **PST Collector**. The Server MSI installs both the 32-bit and 64-bit client installers and the Barracuda PST **Collector.adm** file into a subdirectory of the application directory in a folder **Clients**. For example, **C:\Program Files\Barracuda\Message Archiver\PST Collector\Clients**. This directory is linked from the **Start** menu.
2. Copy the **.msi** file(s) to a location or file share accessible to users.

Create the PST Collector Software Distribution Package

Use the following steps to configure the Barracuda PST Collector Client.

1. Open the **Configuration Manager Console** and navigate to **System Center Configuration Manager > Site Database > Computer Management > Packages**:
 - Specify the general information, data source, distribution settings, and any other desired information for the new package.
 - In the **Data Source** page, specify the UNC path of the **.msi** file(s) to be deployed.
2. Go to **System Center Configuration Manager > Site Database > Computer Management > Software Distribution > Package** and open the package created in the previous step.
3. Right-click **Programs**, point to **New**, and click **Program**.
4. In the **New Program Wizard**, enter the following in the **Command line** field:
 - For 64-bit distribution:

```
msiexec /i BarPstColClient-<version>_x64.msi SERVER= <server FQDN>  
for example:
```

```
msiexec /i BarPstColClient-5.0.0_x64.msi SERVER=localhost
```

- For 32-bit distribution

```
msiexec /i BarPstColClient-<version>_x86.msi SERVER= <server FQDN>  
for example:
```

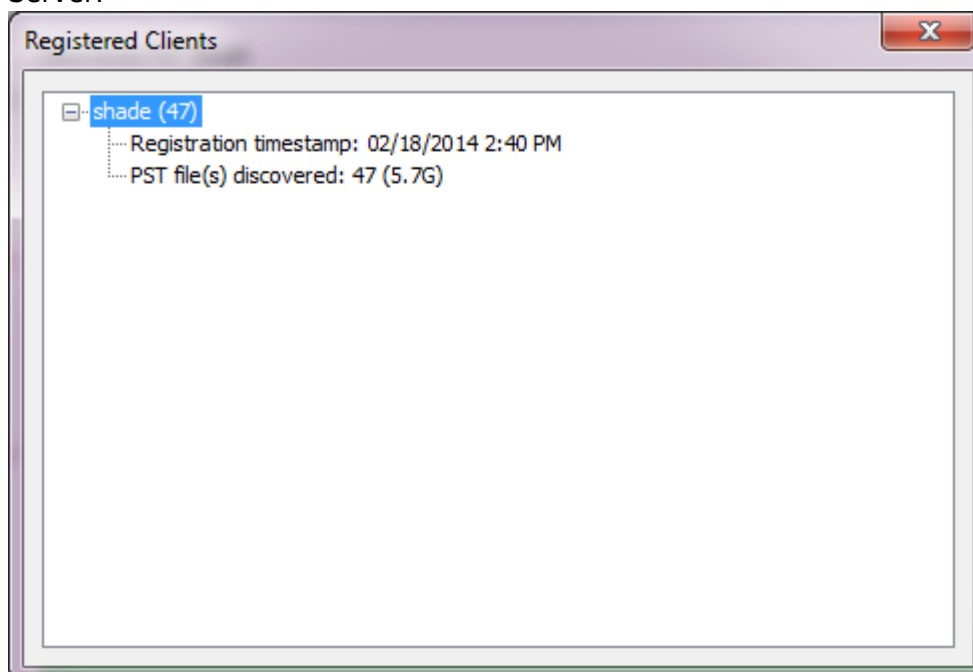
```
msiexec /i BarPstColClient-5.0.0_x86.msi SERVER=localhost
```

5. Enter the remaining details as necessary.
6. For the Package, open the **Properties** dialog box, and click the **Requirements** tab to specify client platforms on which the program is to run.
7. Use the **New Distribution Points Wizard** to select the distribution server(s).
8. Use the **New Advertisements Wizard** to create a job to distribute the package to users; use the **Schedule** tab to select dates and times when you want to run the package.

Verify Barracuda PST Collector Client Installation

Use the following steps to verify that the Barracuda PST Collector Client is installed and registered on all clients.

1. On the system where the Barracuda PST Collector Server is installed, open the Admin Console (**Start > Programs > Barracuda > Message Archiver > PST Collector**).
2. From the **Reports** menu, click **Registered Clients**; a window displays a list of all systems currently running a Barracuda PST Collector Client configured to connect to the PST Collection Server:

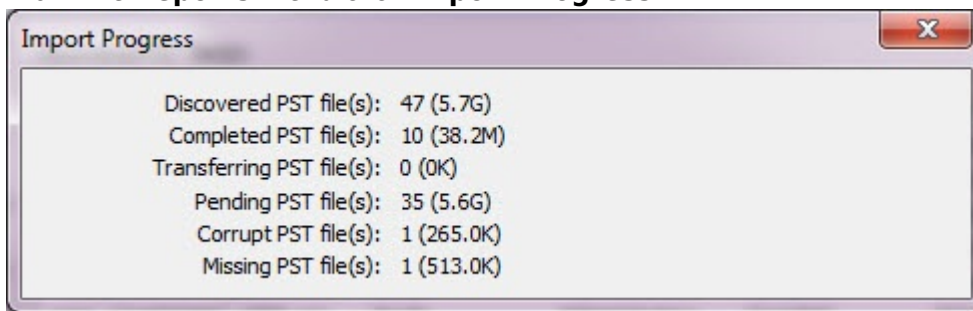


3. Once the software is installed, it displays in the list of registered clients.
4. Refresh the **Registered Clients** display on the Barracuda PST Collector Server, and verify the restarted system is registering correctly.

Monitor and Verify PST Collection

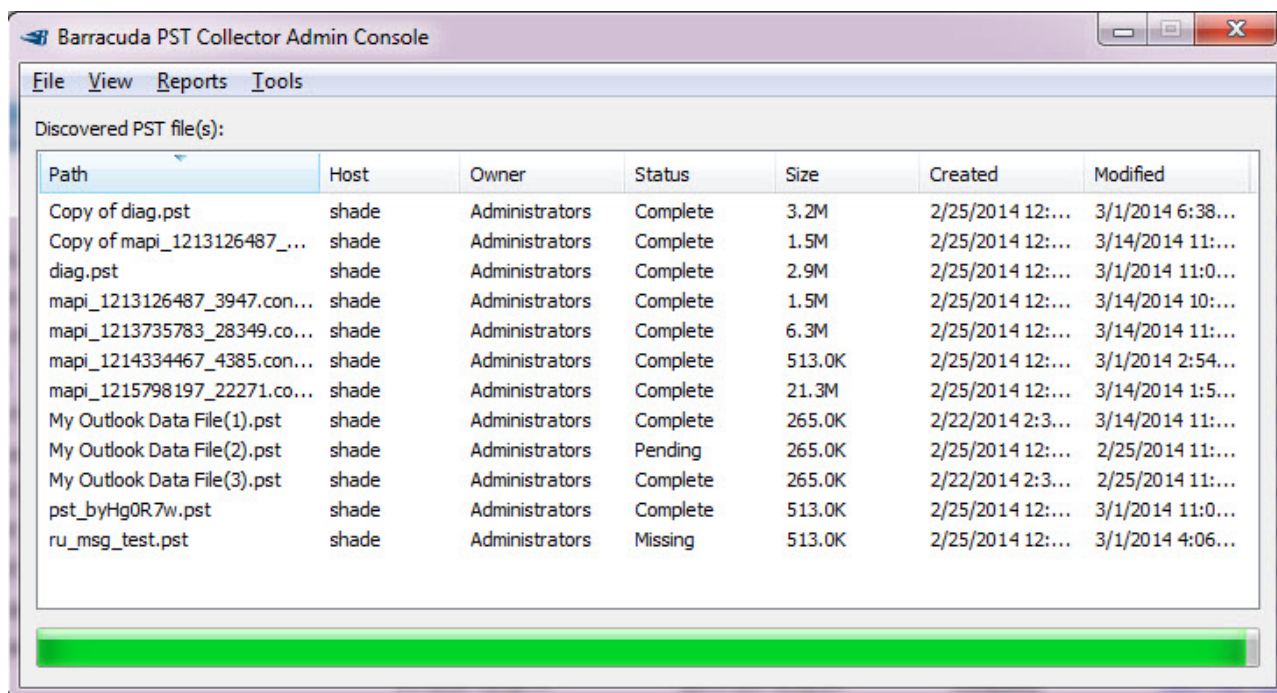
Use the following steps to monitor and verify PST collection.

1. On the system where the Barracuda PST Collector Server is installed, open the Admin Console (**Start > Programs > Barracuda > Message Archiver > PST Collector**).
2. From the **Reports** menu click **Import Progress**:



A window displays the number and size of the PST files that:

- were discovered;
 - have completed transfer to the Barracuda Message Archiver;
 - are in the midst of a transfer;
 - are awaiting transfer.
3. Once imports are no longer in progress, verify that the number and size of the completed PST files are as expected in the **PST Collector Admin Console**:



The screenshot shows the 'Barracuda PST Collector Admin Console' window. It has a menu bar with 'File', 'View', 'Reports', and 'Tools'. Below the menu is a section titled 'Discovered PST file(s):' containing a table with the following columns: Path, Host, Owner, Status, Size, Created, and Modified. The table lists several PST files, including 'Copy of diag.pst', 'Copy of mapi_1213126487_...', 'diag.pst', 'mapi_1213126487_3947.con...', 'mapi_1213735783_28349.co...', 'mapi_1214334467_4385.con...', 'mapi_1215798197_22271.co...', 'My Outlook Data File(1).pst', 'My Outlook Data File(2).pst', 'My Outlook Data File(3).pst', 'pst_byHg0R7w.pst', and 'ru_msg_test.pst'. The status of these files varies from 'Complete' to 'Missing'.

Path	Host	Owner	Status	Size	Created	Modified
Copy of diag.pst	shade	Administrators	Complete	3.2M	2/25/2014 12:...	3/1/2014 6:38...
Copy of mapi_1213126487_...	shade	Administrators	Complete	1.5M	2/25/2014 12:...	3/14/2014 11:...
diag.pst	shade	Administrators	Complete	2.9M	2/25/2014 12:...	3/1/2014 11:0...
mapi_1213126487_3947.con...	shade	Administrators	Complete	1.5M	2/25/2014 12:...	3/14/2014 10:...
mapi_1213735783_28349.co...	shade	Administrators	Complete	6.3M	2/25/2014 12:...	3/14/2014 11:...
mapi_1214334467_4385.con...	shade	Administrators	Complete	513.0K	2/25/2014 12:...	3/1/2014 2:54...
mapi_1215798197_22271.co...	shade	Administrators	Complete	21.3M	2/25/2014 12:...	3/14/2014 1:5...
My Outlook Data File(1).pst	shade	Administrators	Complete	265.0K	2/22/2014 2:3...	3/14/2014 11:...
My Outlook Data File(2).pst	shade	Administrators	Pending	265.0K	2/25/2014 12:...	2/25/2014 11:...
My Outlook Data File(3).pst	shade	Administrators	Complete	265.0K	2/22/2014 2:3...	2/25/2014 11:...
pst_byHg0R7w.pst	shade	Administrators	Complete	513.0K	2/25/2014 12:...	3/1/2014 11:0...
ru_msg_test.pst	shade	Administrators	Missing	513.0K	2/25/2014 12:...	3/1/2014 4:06...

4. If there are PST files that failed to complete due to corruption or other errors, return to the main Admin Console window. From the **View** menu select **Filter**, and click **Show Corrupt**. A list of all such PST files displays in the main window along with detailed information including the owner, the originating client system, and creation and last modification dates. Independent investigation may be necessary for each PST file that failed to import as there can be a variety of reasons for the failure including (but not limited to):
- the client system does not have, or does not allow, adequate access to the PST file location;
 - the PST file is too large for transfer;
 - the PST file is still in use

Error messages are found in various logs on the client system including those in the installation directory. If you are unable to find a cause for the PST import errors, contact [Barracuda Networks Technical Support](#) for further assistance.

Assigned and Unassigned PSTs

When the Barracuda PST Collector submits a PST file to the Barracuda Message Archiver, the user's security identifier (SID), obtained from the Windows User Profile, is collected and stored.

If no user SID is available at the time the PST is sent to the PST Server, automatic user assignment *is not* performed. However, if auto-assignment cannot be made, the administrator can manually assign a PST to an active AD user by right-clicking on the PST file in the **BASIC > Search** page in the **PSTs & Tags** tab.

Once a PST file is enabled for processing, if the SID is resolvable via the configured LDAP source, the PST file is assigned to the appropriate user based on the LDAP lookup, and displays in the **Assigned PSTs** folder in the **BASIC > Search** page in the **PSTs & Tags** tab. If the SID cannot be resolved through LDAP lookup, the PST file is processed but is not assigned to a user. The PST file displays in the **Unassigned PSTs** folder in the **BASIC > Search** page in the **PSTs & Tags** tab.

Emails processed from an 'unassigned' PST file are available in the **Search** page and are available to both the Message Archiver administrator and to any user whose email address or aliases are included in the email headers.

Manually Assigning a PST

To manually assign an unassigned PST file to a user already displayed in the **Assigned PSTs** folder, use the following steps:

1. Log in to the Barracuda Message Archiver as the administrator, and go to the **BASIC > Search** page.
2. Click the **PSTs & Tags** tab, and open the **Unassigned PSTs** folder.
3. Click on the unassigned PST and drag it to a user name listed in the **Assigned PSTs** folder.

To manually assign the PST file to a user not displayed in the **Assigned PSTs** folder, use the following steps:

1. Log in to the Barracuda Message Archiver as the administrator, and go to the **BASIC > Search** page.
2. Click the **PSTs & Tags** tab, navigate to and right-click the PST file you want to assign, and then click **Assign PST**.
3. In the **Assign PST** dialog box, enter at least three characters of the email address to which to assign the PST.
4. The **Search for User** field populates with all matching users; click on the user to which to assign the PST file, and click **OK**.

Verify Import of all Transferred PST Files

Use the following steps to confirm that all PST files are correctly transferred to the Barracuda Message Archiver, and verify that the contents of each PST file has been extracted and imported into the archive.

1. Log into your Barracuda Message Archiver as *admin*, and navigate to the **MAIL SOURCES > PST Import** page.
2. In the **Recent PST Imports** section, verify the status for all listed PST files displays as **Completed**:

Recent PST Imports Update Help				
File Name	Start Time	End Time	Status	Actions
diag.pst	2014-02-12 15:07:06	2014-02-02 15:07:20	Completed	View Log Report Delete
mapi_1213735783_28349.conf.pst	2014-02-02 15:06:32	2014-02-02 15:06:47	Completed	View Log Report Delete
mapi_1215798197_22271.conf.pst	2014-02-02 15:05:52	2014-02-02 15:06:12	Completed	View Log Report Delete
My Outlook Data File(1).pst	2014-02-02 15:05:23	2014-02-02 15:05:33	Completed	View Log Report Delete
Copy of diag.pst	2014-02-02 15:04:49	2014-02-02 15:05:02	Completed	View Log Report Delete
My Outlook Data File(3).pst	2014-02-02 15:04:20	2014-02-02 15:04:30	Completed	View Log Report Delete
pst_byHg0R7w.pst	2014-02-02 15:03:49	2014-02-02 15:04:01	Completed	View Log Report Delete
Copy of mapi_1213126487_3947.conf.pst	2014-02-02 15:03:14	2014-02-02 15:03:29	Completed	View Log Report Delete
mapi_1214334467_4385.conf.pst	2014-02-02 15:02:37	2014-02-02 15:02:55	Completed	View Log Report Delete
mapi_1213126487_3947.conf.pst	2014-02-02 15:02:00	2014-02-02 15:02:18	Completed	View Log Report Delete
Trying to get a 1gigger_a203.pst	2014-02-02 18:43:11	2014-02-02 18:49:16	Completed	View Log Report Delete
has_bccs_vtkn.pst	2014-02-02 18:59:43	2014-02-02 18:59:54	Completed	View Log Report Delete
amoran_1.pst	2014-02-01 18:56:11	2014-02-01 18:56:21	Completed	View Log Report Delete
bjorn01.pst	2014-02-01 18:55:40	2014-02-01 18:55:50	Completed	View Log Report Delete
A_Couple of Spaces.pst	2014-02-01 18:55:06	2014-02-01 18:55:18	Completed	View Log Report Delete
bnma-415701.pst	2014-02-01 18:54:37	2014-02-01 18:54:47	Completed	View Log Report Delete
A_few_selected_folders_mPv8.pst	2014-02-01 18:54:05	2014-02-01 18:54:15	Completed	View Log Report Delete

3. For any listed file, including files that did not complete, click the **View Log** link to display a log of what transpired during the import, or click the **Report** link to view a summary of the imported data.

Generate and Save a PST Collection Activity Report

1. On the system where the Barracuda PST Collector Server is installed, open the Admin Console (**Start > Programs > Barracuda > Message Archiver > PST Collector**).
2. From the **File** menu, click **Export Discovered PST Data**.
3. Select the name and location where you want to store the data displayed in the main window. The file is saved in **CSV** format, suitable for reading by Microsoft Excel or a similar program.

Uninstall the Barracuda PST Collector

Use the following steps to uninstall the Barracuda PST Collector from the client systems and server:

1. Open the **Configuration Manager Console** and navigate to **System Center Configuration Manager > Site Database > Computer Management > Software Distribution**.
2. Go to **Advertisements** and delete the Advertisement you created to deploy the **.msi** file(s).

Figures

1. pst collector 01.png
2. registered clients36.png
3. import progress.png
4. console36.png
5. recent imports36.png

© Barracuda Networks Inc., 2019 The information contained within this document is confidential and proprietary to Barracuda Networks Inc. No portion of this document may be copied, distributed, publicized or used for other than internal documentary purposes without the written consent of an official representative of Barracuda Networks Inc. All specifications are subject to change without notice. Barracuda Networks Inc. assumes no responsibility for any inaccuracies in this document. Barracuda Networks Inc. reserves the right to change, modify, transfer, or otherwise revise this publication without notice.