

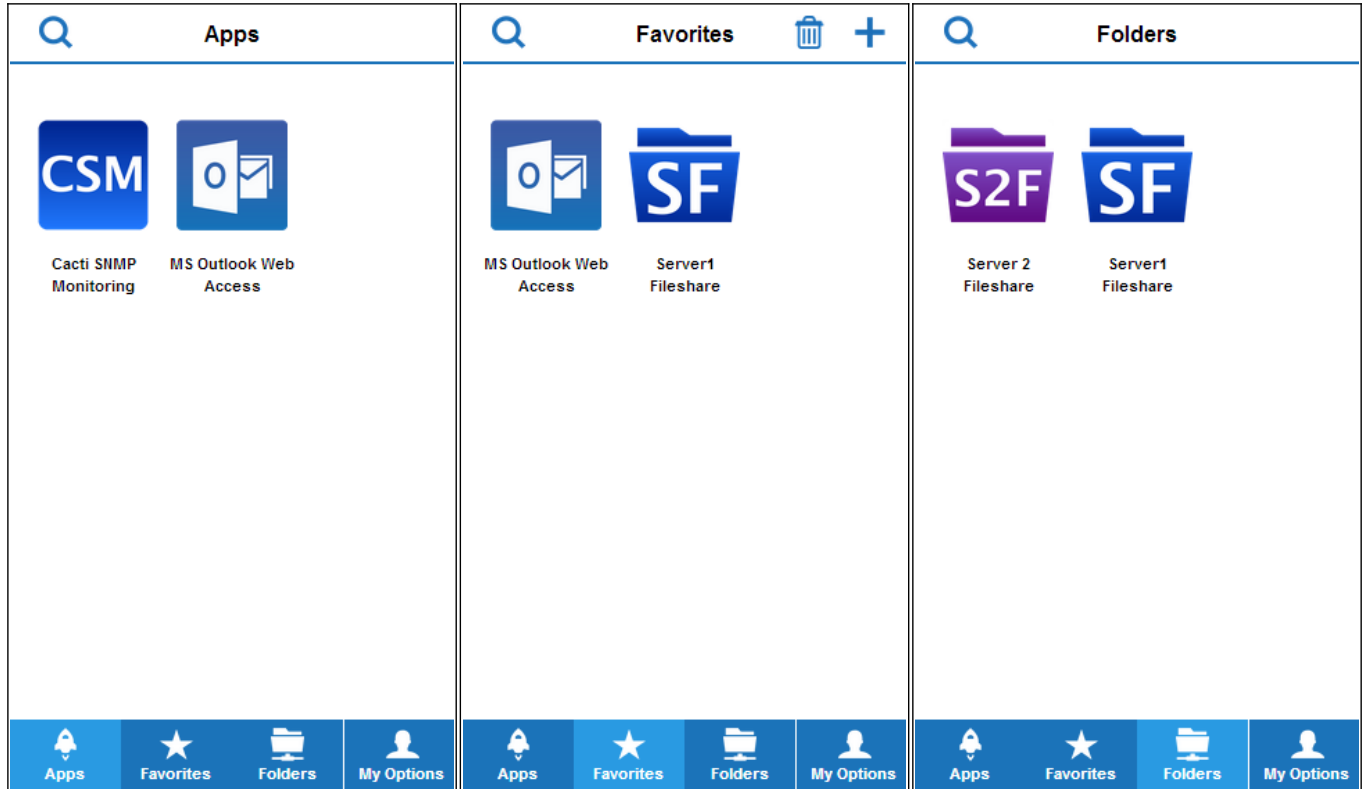
Mobile Portal User Guide

<https://campus.barracuda.com/doc/39822784/> When you connect to the Barracuda SSL VPN with a mobile device such as smartphone or tablet you are automatically redirected to the mobile portal. The Barracuda SSL VPN mobile portal provides easy mobile access to your organization's applications and network shares via the web browser. On Apple iOS devices, you can additionally set up preconfigured VPN and Exchange (ActiveSync) connections.

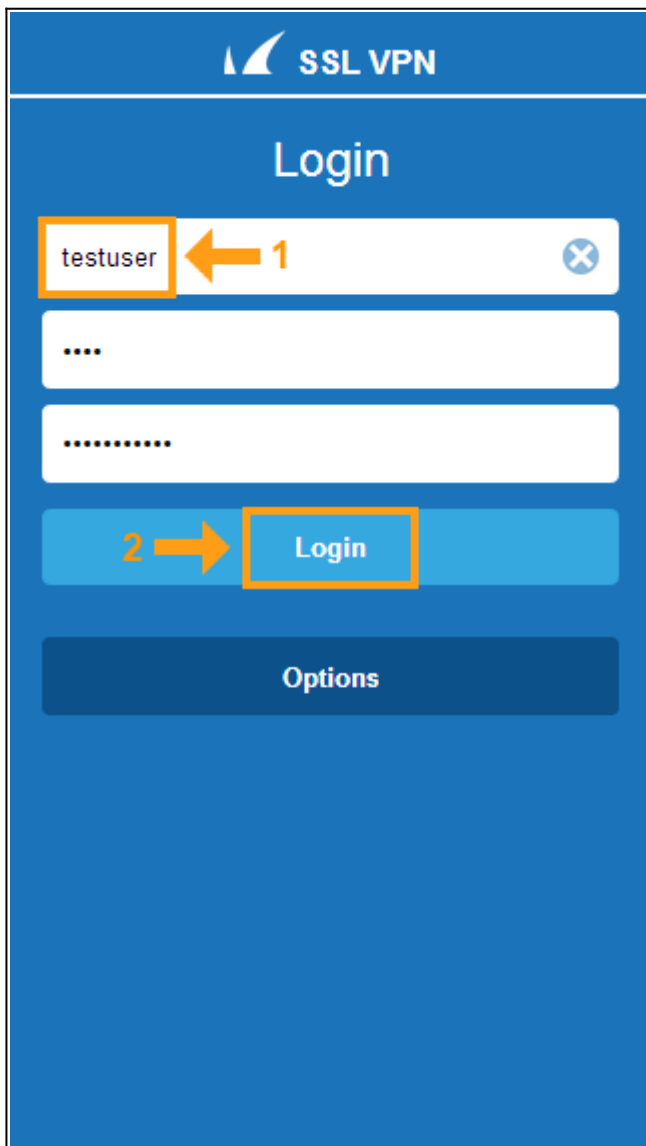
Introduction to the Barracuda SSL VPN mobile interface

The Barracuda SSL VPN mobile portal arranges available apps and folders into three tabs, accessible via the interface service bar:

- **Apps** – Contains all configured apps that are compatible with your mobile device.
- **Favorites** – Contains the apps and network folders that you have marked as favorites for quick access.
- **Folders** – Contains the network folders made accessible by the Barracuda SSL VPN. Under this tab, you can browse, upload, and download files.



Logging into the SSL VPN mobile portal

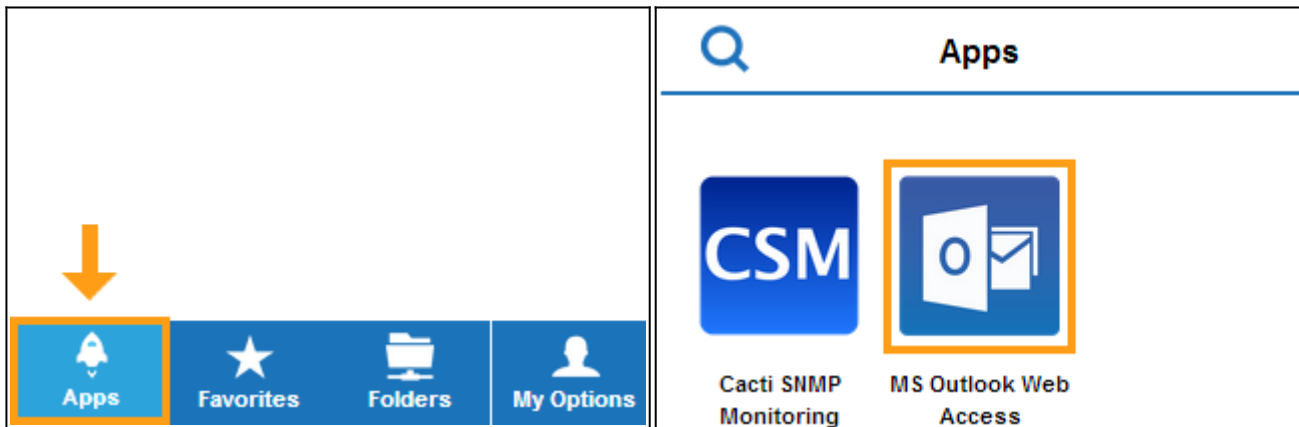


Open the browser on your mobile device and go to <https://>. Enter your user credentials and tap **Login**.

Depending on your authentication scheme, the PIN/password fields may be grayed out and become available first after entering the username and tapping **Login**. In this case, enter password and PIN after this process and tap **Login** again. If the PIN or password you have entered was incorrect, the failed login attempt is indicated by a shaking animation. The fields are cleared and a 'login failed' message is displayed. To enter another user name, tap the **x** icon.

Launching apps

The **Apps** page contains all apps that are configured on the Barracuda SSL VPN. To open it, tap the **Apps** tab. To start an application from the **Apps** screen, tap the icon associated with it.



The app launches and you will be redirected to the application.

On the application screen, you can move the bottom title bar to the top for better display. To do so, tap the 'up' arrow icon on the right.



If you want to add this app to your favorites, tap the 'star' icon. As soon as the app is added, the icon changes its color status to filled.

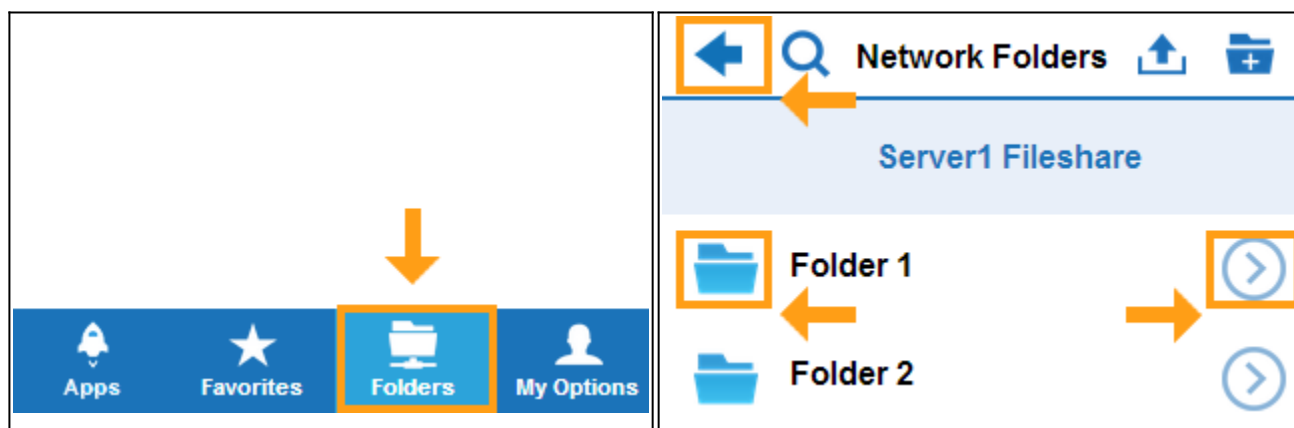


To close the app, tap the **x**.

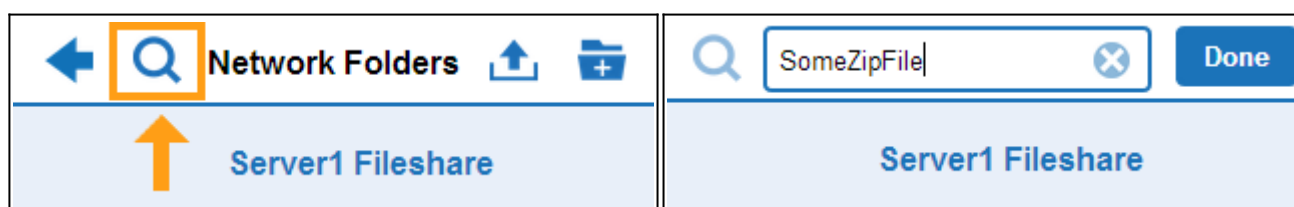


Accessing folders and files

Tap the **Folders** tab to access the network folders configured on the Barracuda SSL VPN. You can navigate through the directories by tapping the folder, file and arrow icons. Tapping the 'forward' arrow icon next to a folder takes you to a page where you can perform actions on the folder. To return to a previous page, tap the 'back' arrow on the top left of the screen.



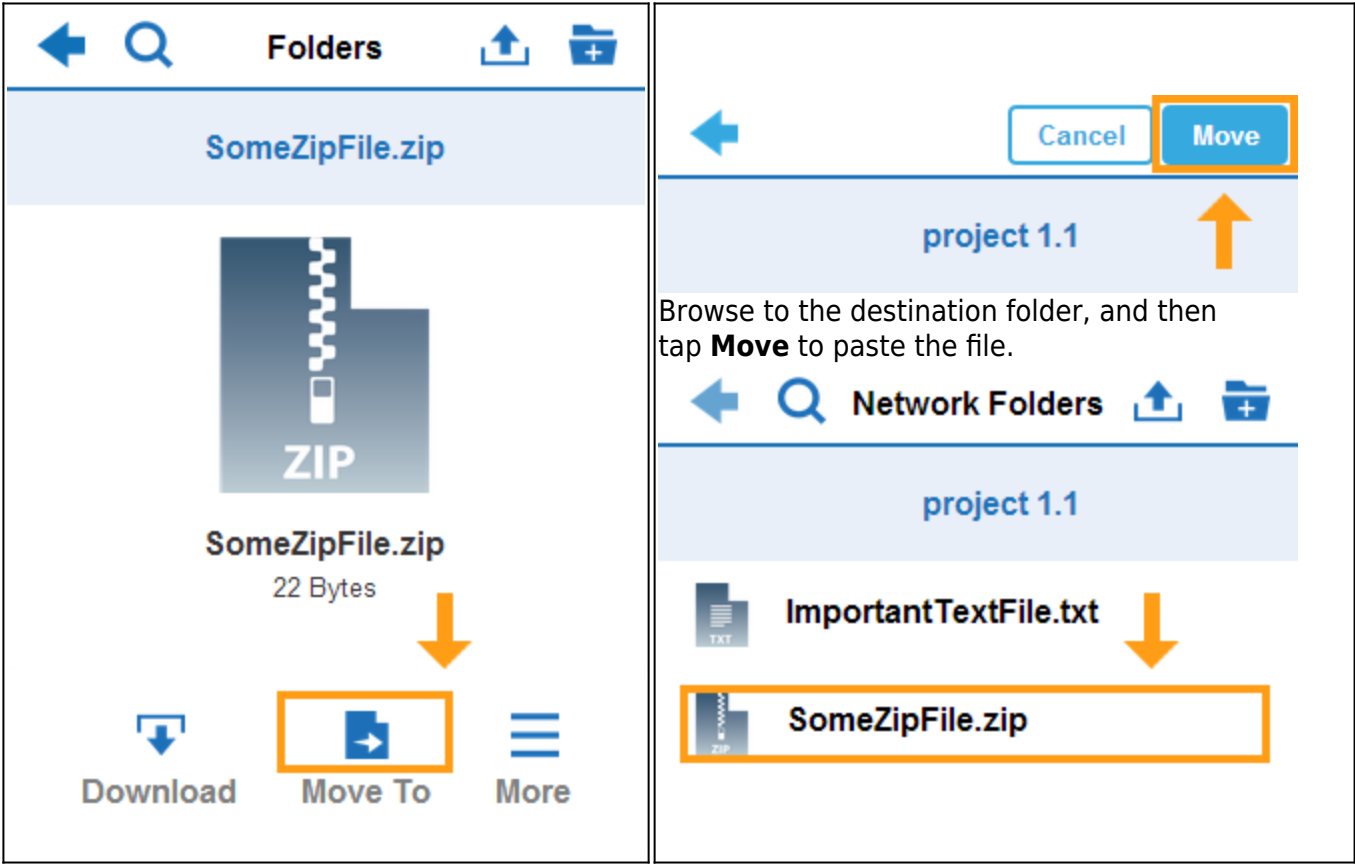
To search for a specific file, folder or app, tap the looking glass icon and type the name of the item in the search field.



Tap the **x** icon to start over, when finished, tap **Done**.

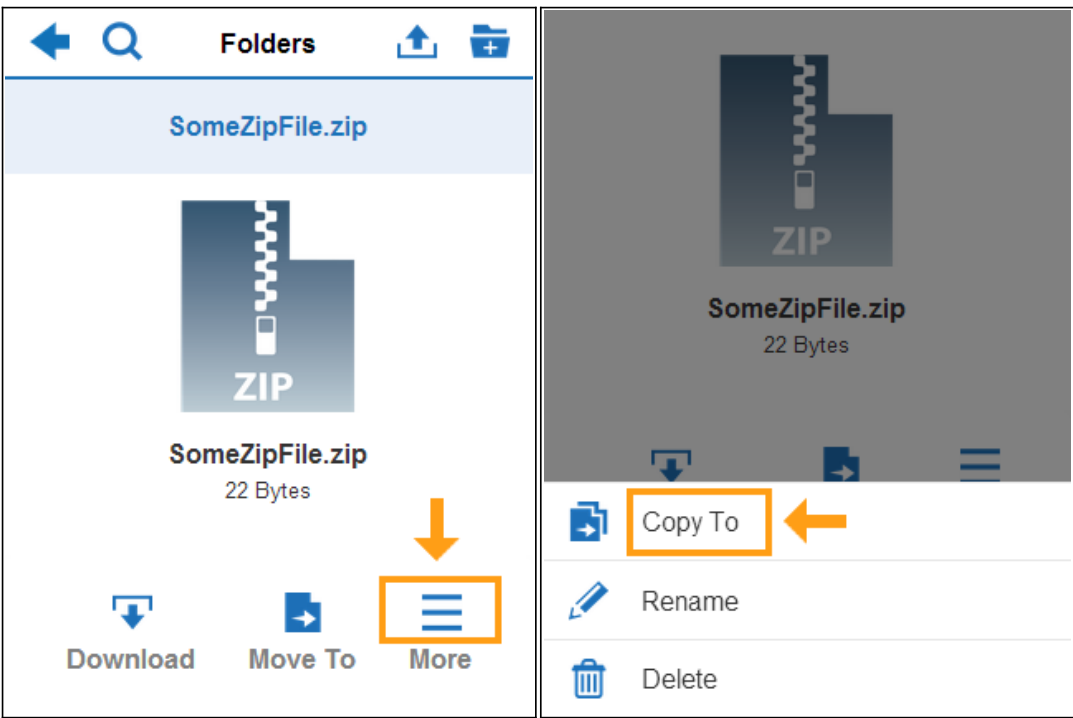
Moving and copying files

To move a file, tap the file icon, and then tap **Move To**.



To move or copy a file, tap the file icon, and then tap **More**.

From the upcoming context menu, select **Copy To**.



Browse to the destination folder, and then tap **Copy** to paste the file.

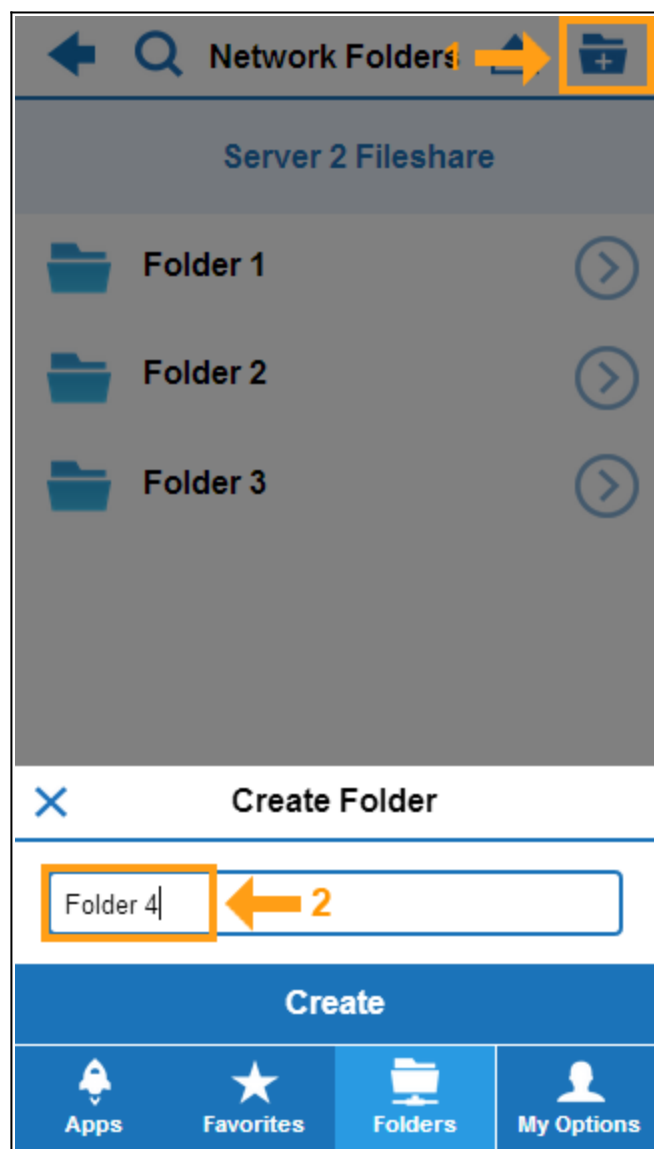


The file is now visible in the destination folder.

To move or copy a folder to another destination, tap the arrow icon next to the folder, and then tap **Move To** or navigate to **Copy To**. Browse to the destination folder, and then tap **Move** or **Copy** to paste the folder.

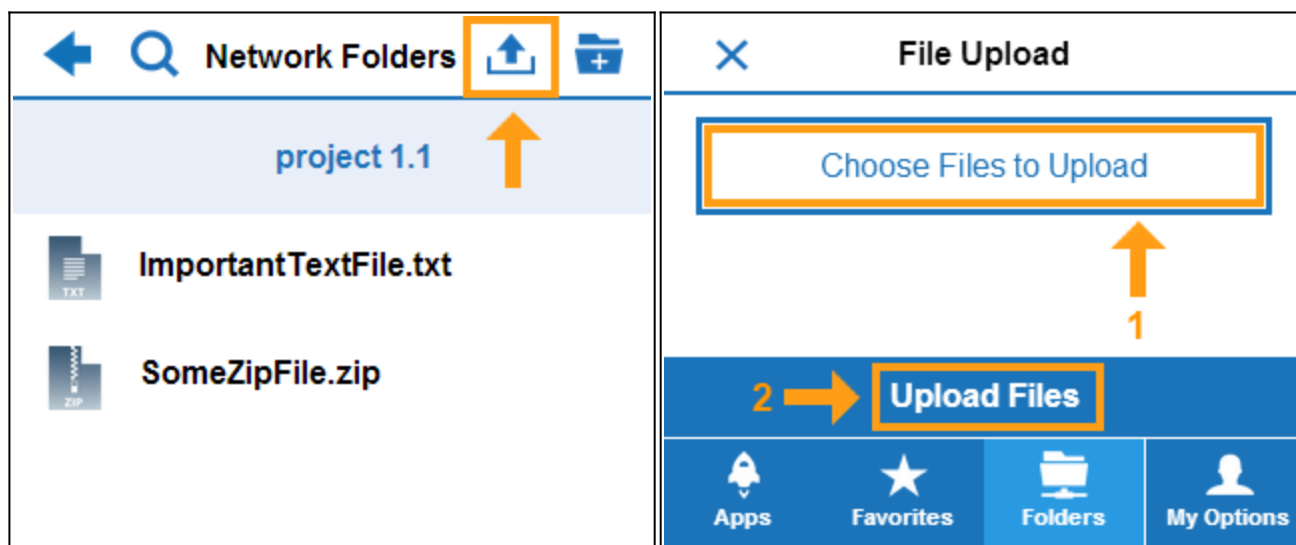
Creating new folders

To create a folder, browse to the target directory and tap the folder icon on the top right of the screen. When prompted, enter a name for the folder and tap **Create**.



Uploading files

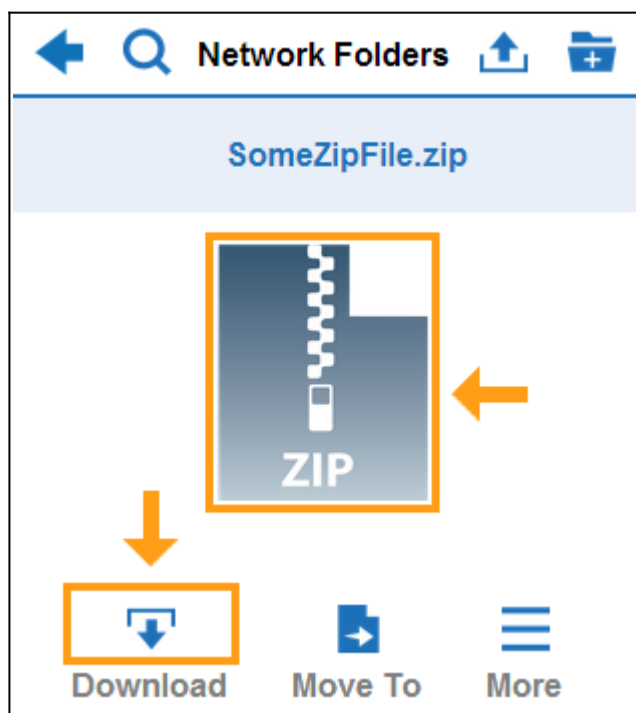
Navigate to the target directory and tap the upload icon on the top right of the screen. When the **File Upload** page opens, tap **Choose File to Upload**. Browse to the file, select it, and tap **Upload Files**.



You will see the file in the target directory after it was successfully uploaded.

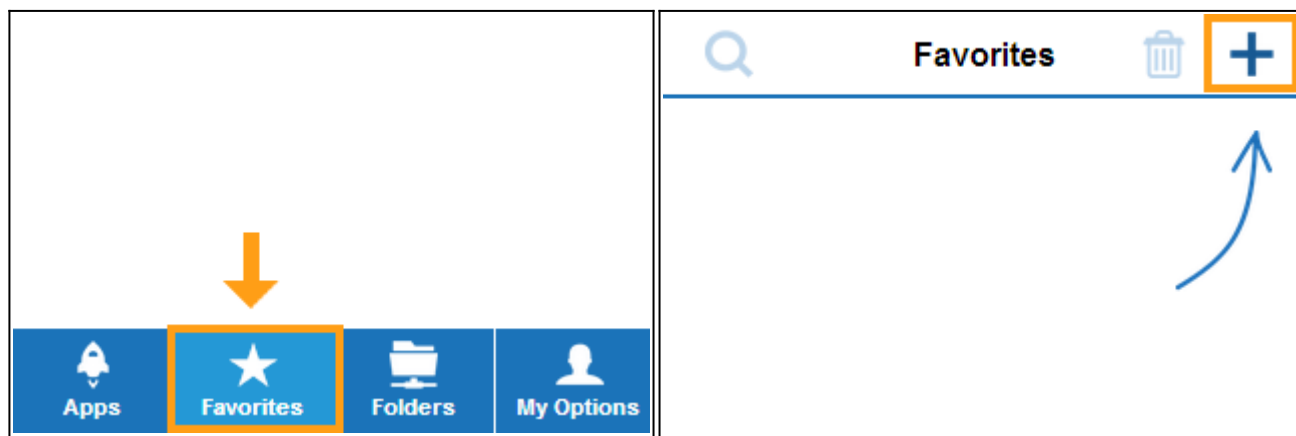
Downloading files

To download a file, tap the file icon to open the page where you can perform actions on the file. On the upcoming screen, tap the file icon again or tap **Download**. The file will now be downloaded and stored on your mobile device as .zip file.

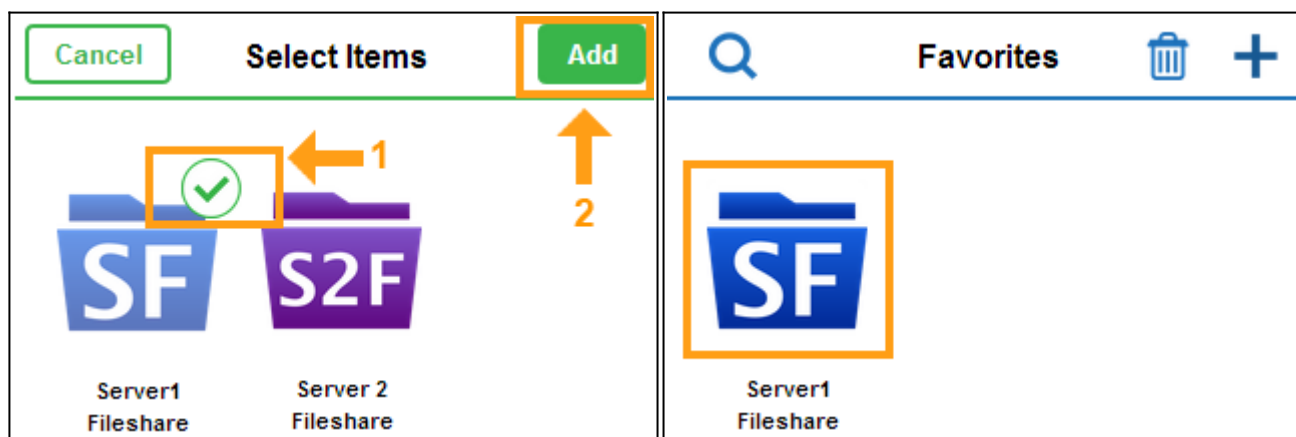


Adding favorites

On the **Favorites** page, you can store apps and network shares for easier access. To open the **Favorites** page, tap the **Favorites** tab. To add an app or a folder, tap the **+** icon.



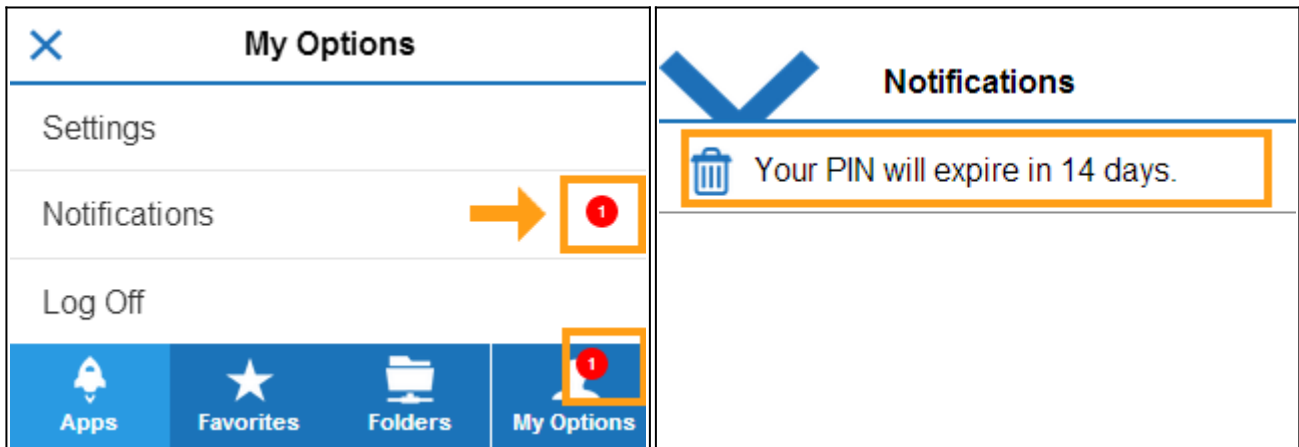
Select the item you want to add from the list and tap **Add**. The app or folder you have added is now visible under the **Favorites** tab.



To remove an app or folder from the favorites list, tap the **Favorites** tab and then tap the trash can symbol. Select the app or folder, and then tap **Delete**.

Notifications

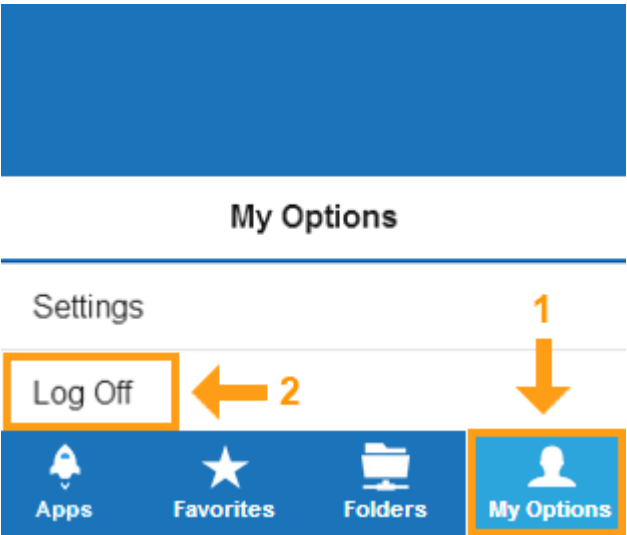
Newly arrived notifications (e.g. PIN expiration information) are indicated by a red warning spot on the **My Options** tab. To access the notification section, tap **My Options** and then tap **Notifications**.



To remove a notification from the list, tap the trash can symbol next to it.

Logging off

To log out of the SSL VPN mobile portal, tap the **My Options** tab, and then tap **Log Off**.



The SSL VPN mobile portal remembers which tab you were last using, e.g., if you had the **Favorites** tab open when you logged off, this tab will be the first one displayed at the next time you log on.

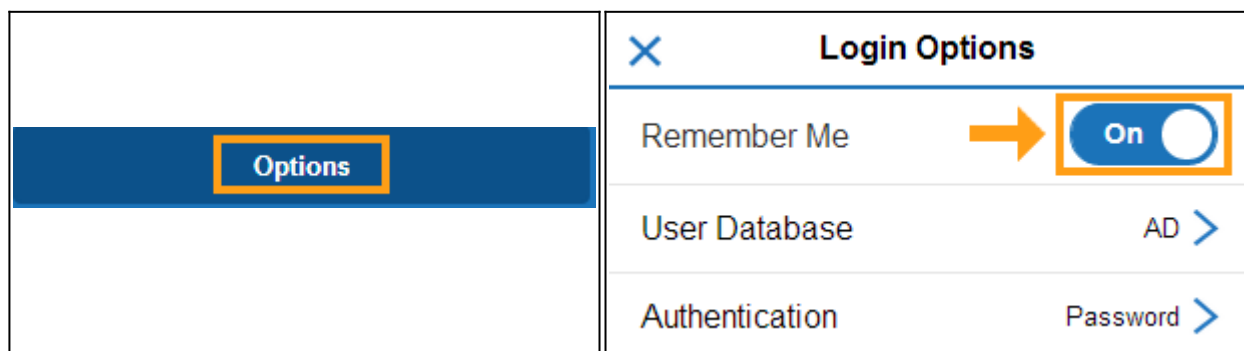
Advanced options

The following section explains additional configuration settings and provides instructions on how to

change login details.

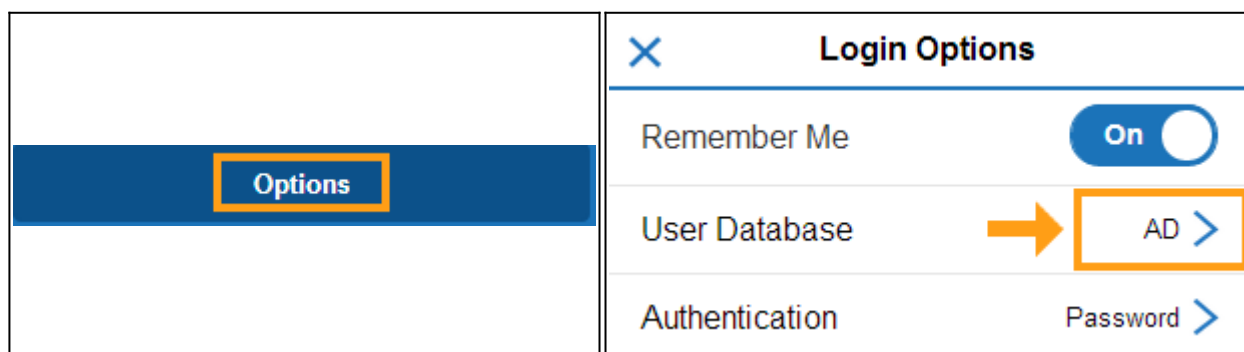
Remember login user

If you want the Barracuda SSL VPN mobile portal to remember your user name for future logins, tap **Options** on the login screen and enable **Remember Me**.



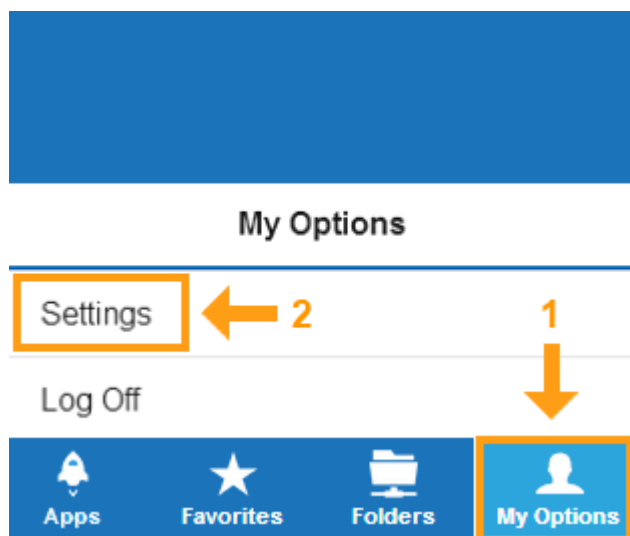
Changing the user database

If you have to log in from a different user database, tap **Options** on the login screen. Tap **User Database** and select the database you want to use. The browser remembers the selected database for your next login from the device.



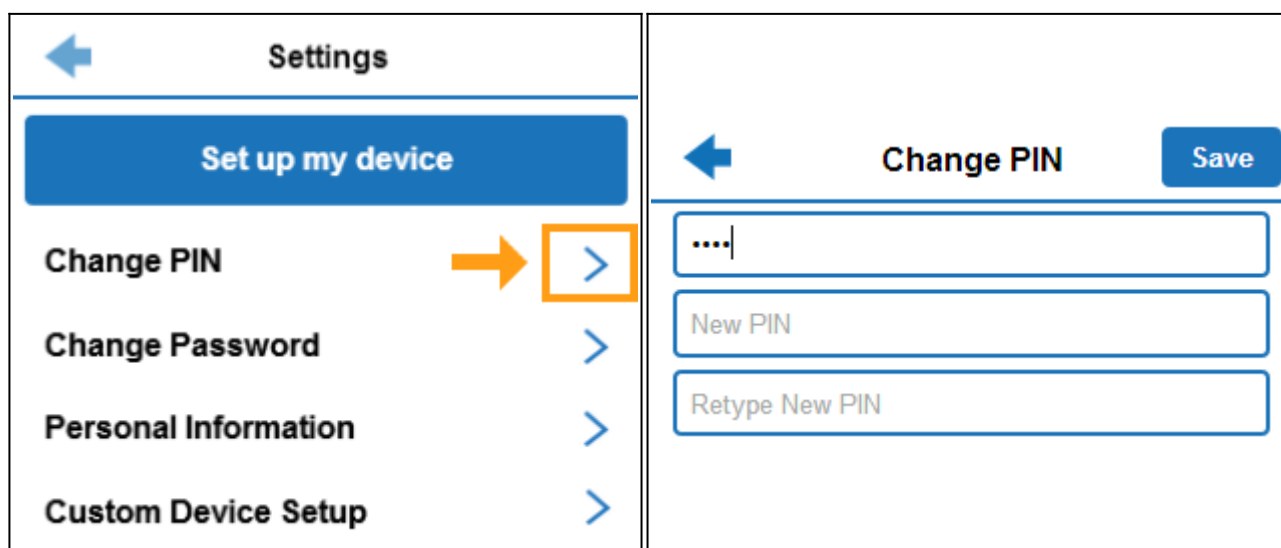
Setting up the device

To configure device settings on the Barracuda SSL VPN mobile portal, go to the **My Options** tab and tap **Settings**.



Changing PIN and password

To change the login PIN, tap **Change PIN**. Enter the current PIN in the **Current PIN** field and the new PIN in the **New PIN** field. Retype the new PIN and tap **Save**. You can now login using the new PIN.



To change the login password, tap **Change Password**. Enter the current password in the **Current Password** field and the new password in the **New Password** field. Retype the new password and tap **Save**. You can now login using the new password.

←

Settings

Set up my device

Change PIN >

Change Password >

Personal Information >

Custom Device Setup >

←

Change Pass...

Save

.....|

New Password

Retype New Password

Personal information

To personalize your SSL VPN, tap **Personal Information**. Enter your mobile number in the **Mobile Number** field. In the **Certificate Attribute** field, enter your hardware token details. Tap **Save**.

←

Settings

Set up my device

Change PIN >

Change Password >

Personal Information >

Custom Device Setup >

←

Personal Infor...

Save

Mobile Number

The phone number, usually to a mobile device, w

Certificate Attribute Value

The value that a Certificate Attribute must contain

Custom device setup

On Apple iOS devices, you can additionally set up preconfigured VPN and Exchange (ActiveSync) connections. For instructions how to configure automatic device setup, see [Custom Device Setup for iOS Devices](#)

Figures

1. apps_tab.png
2. favorites_tab.png
3. folders_tab.png
4. login_ssl.png
5. apps_open_ssl.png
6. apps_ssl.png
7. bar1.png
8. bar3.png
9. bar4.png
10. bar2.png
11. folders_open_ssl.png
12. folders_ssl.png
13. search.png
14. find.png
15. file_move.png
16. move_to.png
17. paste.png
18. file_copy_to.png
19. copy_select.png
20. copy_to.png
21. paste.png
22. folder_create.png
23. file_upload1_ssl.png
24. upload_file.png
25. file_download_ssl.png
26. favorites_open_ssl.png
27. favorites_ssl.png
28. favorites_select_ssl.png
29. favorites_add_ssl.png
30. notifications_ssl.png
31. notifications2_ssl.png
32. logoff.png
33. options.png
34. login_ssl_options.png
35. options.png
36. login_ssl_db.png
37. options_settings.png
38. pin.png
39. newpin.png
40. pwd.png
41. newpwd.png
42. personal.png
43. personal_info.png

© Barracuda Networks Inc., 2024 The information contained within this document is confidential and proprietary to Barracuda Networks Inc. No portion of this document may be copied, distributed, publicized or used for other than internal documentary purposes without the written consent of an official representative of Barracuda Networks Inc. All specifications are subject to change without notice. Barracuda Networks Inc. assumes no responsibility for any inaccuracies in this document. Barracuda Networks Inc. reserves the right to change, modify, transfer, or otherwise revise this publication without notice.