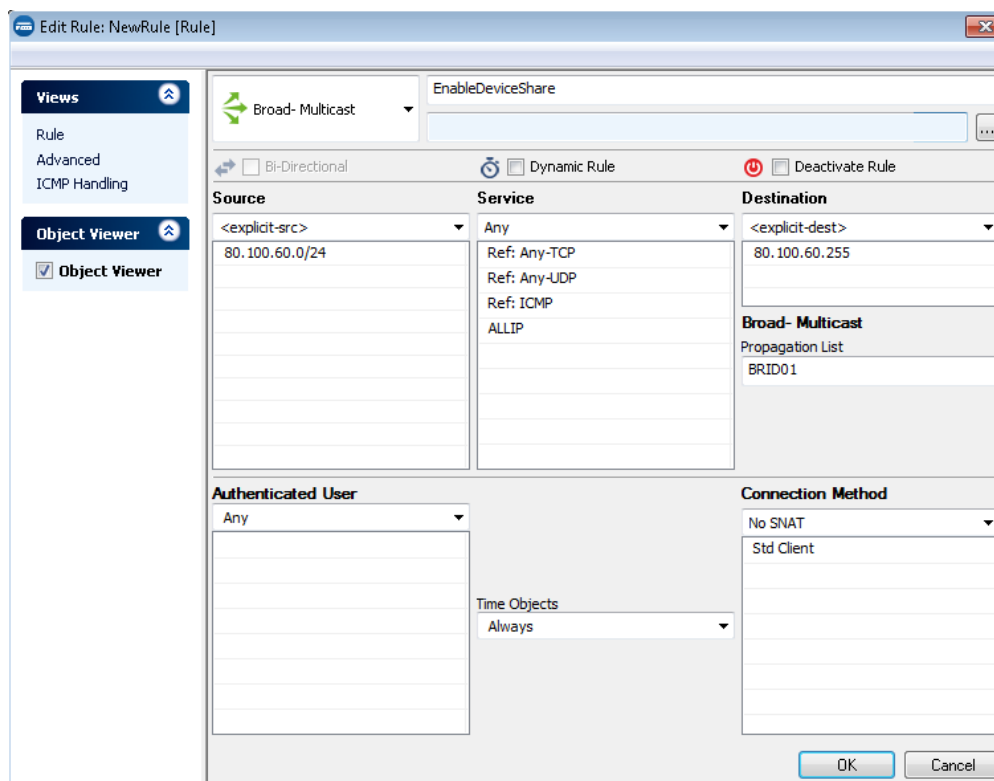



## How to Create a Broad-Multicast Firewall Rule

<https://campus.barracuda.com/doc/41115730/>

A **Broad-Multicast** rule propagates broadcasts between multiple [bridged network interfaces](#).



### Create a Broad-Multicast Firewall Rule

1. Open the **Forwarding Rules** page (**Config > Full Config > Virtual Servers > your virtual server > Assigned Services > Firewall > Forwarding Rules**).
2. Click **Lock**.
3. Either click the plus icon (+) in the top right of the rule set, or right-click the rule set and select **New > Rule**.
 
4. Select **Broad-Multicast** as the action.
5. Enter a **name** for the rule. For example, EnableDeviceShare.
6. Specify the following settings that must be matched by the traffic to be handled by the firewall rule:
  - **Source** - The bridged network.
  - **Destination** - The broadcast addresses that you want to propagate in the network.
  - **Service** - Select a service object, or select **Any** for this rule to match for all services.
7. In the **Broad- Multicast - Propagation List** field, enter the propagation interface or IP

address(es). You can also enter a comma-delimited array of (bridged) network interfaces or existing IP addresses.

Propagation List Content	Example	Operation
Mixed list of IP addresses and interfaces	<i>port2,port3,192.168.200.10</i>	IP packets are propagated through the specified interface and in case of IP addresses, the outgoing interface is determined by performing a routing lookup.
Network interface(s)	<i>port2,port3,vpnr0,brid01</i>	The IP packets are transmitted unchanged through the specified interface(s).
IP address(es)	<i>192.168.200.10,10.10.0.100</i>	The target of IP packets is changed according to the specified IP address(es) and packets are delivered after performing a routing lookup.
<interface>:<IP address>	<i>port2:192.168.200.10</i>	The IP packets are transmitted through the specified interface and the target is changed according to the specified IP address. For a standard IP address, a layer 2 broadcast is triggered. For a multicast IP address, a corresponding layer 2 multicast MAC is created.
<interface>:<IP address>!	<i>192.168.200.10!</i>	Forces a layer 2 broadcast and the target MAC address is changed to ff:ff:ff:ff:ff:ff. This will also work if the destination is a multicast address.

8. Click **OK**.
9. Drag and drop the firewall rule so that it is the first rule that matches the traffic that you want it to forward. Ensure that the rule is located *above* the BLOCKALL rule; rules located below the BLOCKALL rule are never executed.
10. Click **Send Changes** and **Activate**.

## Additional Matching Criteria

- **Authenticated User** – For more information, see [User Objects](#).
- **Connection Method** – For more information, see [Connection Objects](#).

## Additional Policies

- **Time Objects** – For more information, see [Time Objects](#).

## Figures

1. FW\_BroadMulticast\_Rule.png
2. FW\_Rule\_Add01.png

© Barracuda Networks Inc., 2019 The information contained within this document is confidential and proprietary to Barracuda Networks Inc. No portion of this document may be copied, distributed, publicized or used for other than internal documentary purposes without the written consent of an official representative of Barracuda Networks Inc. All specifications are subject to change without notice. Barracuda Networks Inc. assumes no responsibility for any inaccuracies in this document. Barracuda Networks Inc. reserves the right to change, modify, transfer, or otherwise revise this publication without notice.