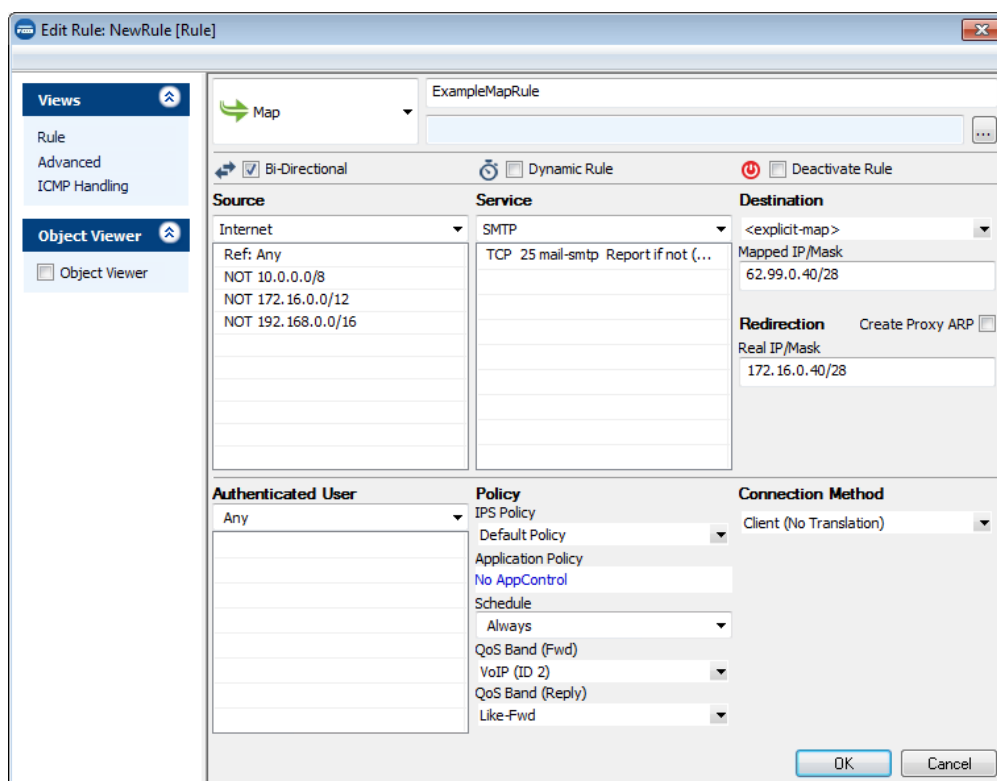


## How to Create a Map Firewall Rule

<https://campus.barracuda.com/doc/41115734/>

A **Map** access rule rewrites incoming network ranges or IP address to destination networks or IP ranges, just like a Dst NAT rule does for a single IP address. You can use a [NAT Table](#) as an object for the **Destination** and/or **Connection** settings.

Ensure that the **Destination** network is the same size or smaller than the network used to redirect the request. Otherwise, the firewall wraps the larger source network into the smaller redirection network.



### Create a Map Access Rule

1. Go to **CONFIGURATION > Configuration Tree > Box > Virtual Servers > your virtual server > Assigned Services > Firewall > Forwarding Rules**.
2. Click **Lock**.
3. Either click the plus icon (+) in the top right of the rule set, or right-click the rule set and select **New > Rule**.



4. Select **Map** as the action.
5. Enter a **Name** for the rule. For example, ExampleMapRule.
6. Select the the **Bi-Directional** check box.
7. Specify the following settings that must be matched by the traffic that to be handled by the access rule:
  - **Source** – The source addresses of the traffic. For example, select **Internet**.
  - **Destination** – Enter the destination network, or select a [NAT table Connection object](#).
  - **Service** – Select a service object, or select **Any** for this rule to match for all services.
8. Enter the **Redirection** IP address or network. This is the network range that the connections will be rewritten to.
9. If the redirection IP network is not physically present on a network interface, select the **Create Proxy ARP** check box. For the example above, proxy ARP is not needed.
10. From the **Connection Method** list, select **Client (No Translation)**.
11. Click **OK**.
12. Drag and drop the access rule so that it is the first rule that matches the traffic that you want it to forward. Ensure that the rule is located *above* the BLOCKALL rule; rules located below the BLOCKALL rule are never executed.
13. Click **Send Changes** and **Activate**.

## Additional Matching Criteria

---

- **Authenticated User** – For more information, see [User Objects](#).
- **Connection Method** – For more information, see [Connection Objects](#).

## Additional Policies

---

- **IPS Policy**– For more information, see [Intrusion Prevention System \(IPS\)](#).
- **Application Control** – For more information, see [Application Control 2.0](#).
  - **SSL Interception** – For more information, see [How to Enable Application Control 2.0](#).
  - **URL Filter** – For more information, see [URL Filter](#).
  - **AV Scan** – For more information, see [How to Configure Virus Scanning in the Firewall](#).
- **Schedule Objects** – For more information, see [Schedule Objects](#).
- **QoS Band (Fwd) or QoS Band (Reply)** – For more information, see [Traffic Shaping - MORE INFO OVERVIEW](#).

## Figures

1. FW\_Map\_Rule.png
2. FW\_Rule\_Add01.png

© Barracuda Networks Inc., 2021 The information contained within this document is confidential and proprietary to Barracuda Networks Inc. No portion of this document may be copied, distributed, publicized or used for other than internal documentary purposes without the written consent of an official representative of Barracuda Networks Inc. All specifications are subject to change without notice. Barracuda Networks Inc. assumes no responsibility for any inaccuracies in this document. Barracuda Networks Inc. reserves the right to change, modify, transfer, or otherwise revise this publication without notice.