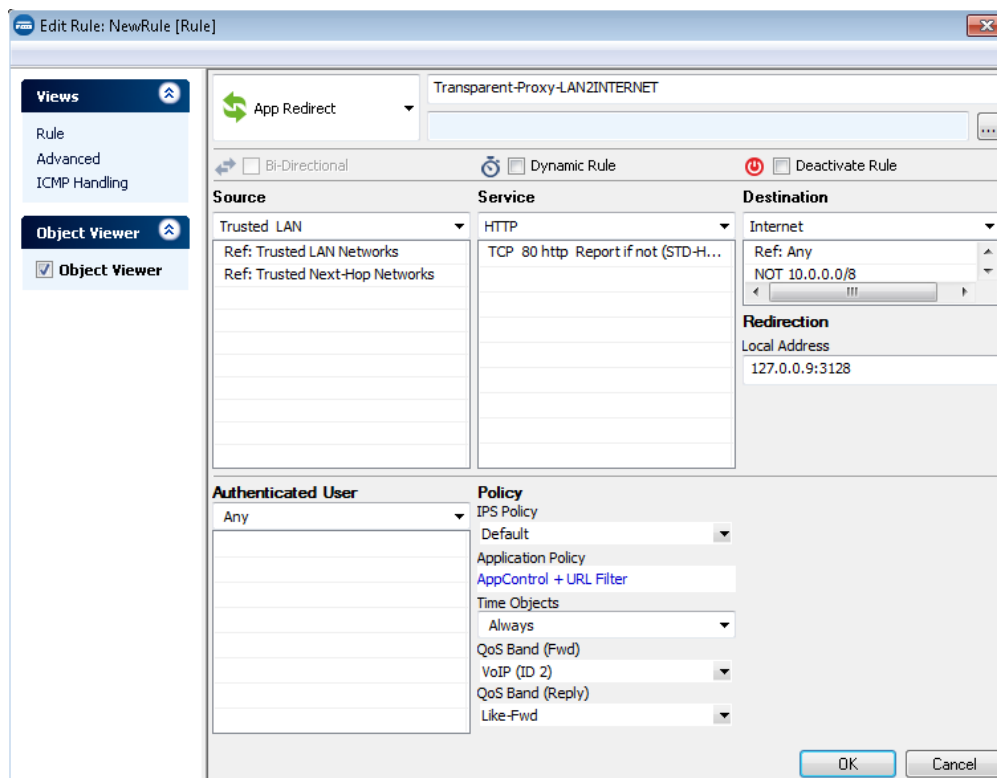



How to Create an App Redirect Firewall Rule

<https://campus.barracuda.com/doc/41115735/>

The **App Redirect** firewall rule rewrites the destination IP address and forwards the traffic to service running on a local IP address of the Barracuda NG Firewall. For example, you can use an app redirect rule transparently redirect all web traffic over the HTTP proxy service.



Create an App Redirect Rule

1. Open the **Forwarding Rules** page (**Config > Full Config > Virtual Servers > your virtual server > Assigned Services > Firewall > Forwarding Rules**).
2. Click **Lock**.
3. Either click the plus icon (+) in the top right of the rule set, or right-click the rule set and select **New > Rule**.

4. Select **App Redirect** as the action.
5. Enter a **Name** for the rule. For example, Transparent -Proxy -LAN2INTERNET.
6. Specify the following settings that must be matched by the traffic to be handled by the firewall rule:
 - **Source** - The source addresses of the traffic.
 - **Destination** - The destination addresses of the traffic.

-
- **Service** – Select a service object, or select **Any** for this rule to match for all services.
7. Enter the **Redirection** IP address and optional port as the **Local Address**. For example, 127.0.0.9:3128 for the HTTP proxy service.
 8. Click **OK**.
 9. Drag and drop the firewall rule so that it is the first rule that matches the traffic that you want it to forward. Ensure that the rule is located *above* the BLOCKALL rule; rules located below the BLOCKALL rule are never executed.
 10. Click **Send Changes** and **Activate**.

Additional Matching Criteria

- **Authenticated User** – For more information, see [User Objects](#).

Additional Policies

- **IPS Policy**– For more information, see [Intrusion Prevention System \(IPS\)](#).
- **Application Control** – For more information, see [Application Control 2.0](#).
 - **URL Filter** – For more information, see [URL Filter](#).
- **Time Objects** – For more information, see [Time Objects](#).
- **QoS Band (Fwd) or QoS Band (Reply)** – For more information, see [Traffic Shaping](#).

Figures

1. FW_AppRedirect.png
2. FW_Rule_Add01.png

© Barracuda Networks Inc., 2020 The information contained within this document is confidential and proprietary to Barracuda Networks Inc. No portion of this document may be copied, distributed, publicized or used for other than internal documentary purposes without the written consent of an official representative of Barracuda Networks Inc. All specifications are subject to change without notice. Barracuda Networks Inc. assumes no responsibility for any inaccuracies in this document. Barracuda Networks Inc. reserves the right to change, modify, transfer, or otherwise revise this publication without notice.