

Upgrading PST Enterprise

<https://campus.barracuda.com/doc/42042457/>

This article applies to the Barracuda PST Enterprise version 5.1 or higher.

Use the steps outlined in this article if you are upgrading to Barracuda PST Enterprise version 5.2 or higher from earlier versions.

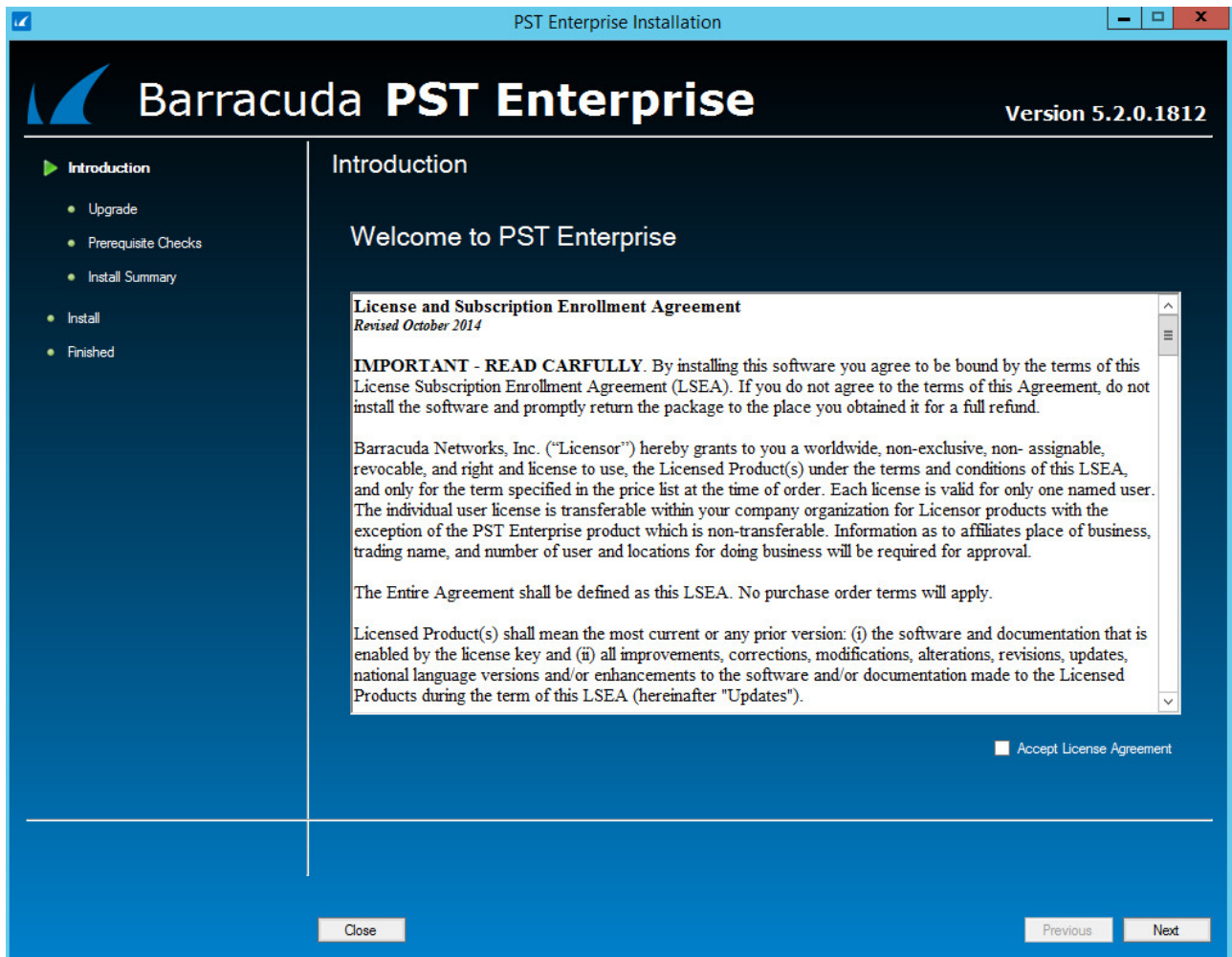
If you planning to upgrade to version 5.2 and are currently running **Copy to Message Archiver** policies, the Barracuda Message Archiver must have firmware version 5.0 or higher. If you are not running Barracuda Message Archiver version 5.0 or higher, do not upgrade at this time.

If you are already running version 5.1, perform an in-place upgrade to version 5.2; do not uninstall the existing version of PST Enterprise. This ensures the existing configuration is maintained during the upgrade procedure.

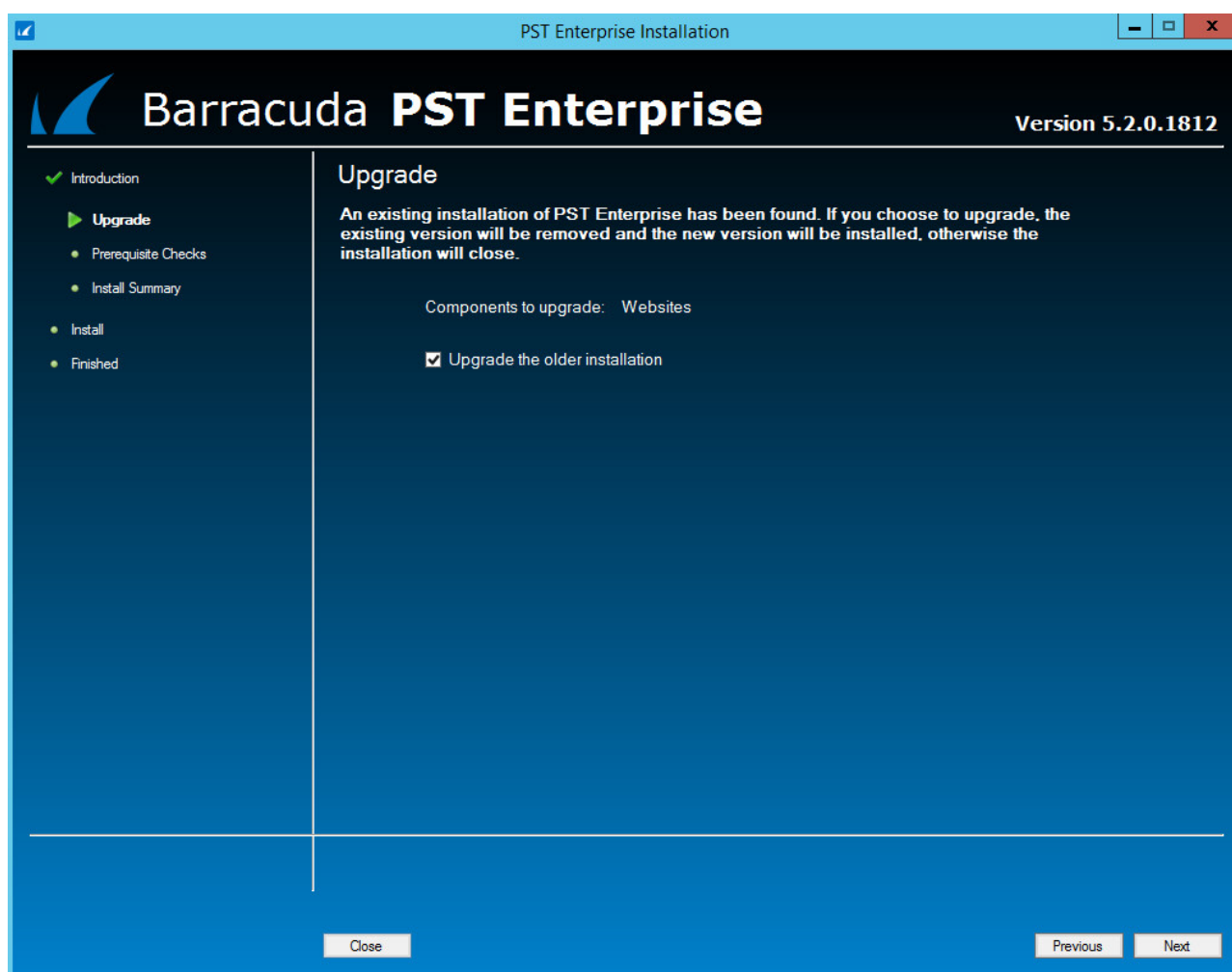
If you are not currently running version 5.1, upgrade to the first version before proceeding to: [Upgrading to PST Enterprise Version 5.1 by Uninstalling and Reinstalling](#)

On the PST Enterprise server:

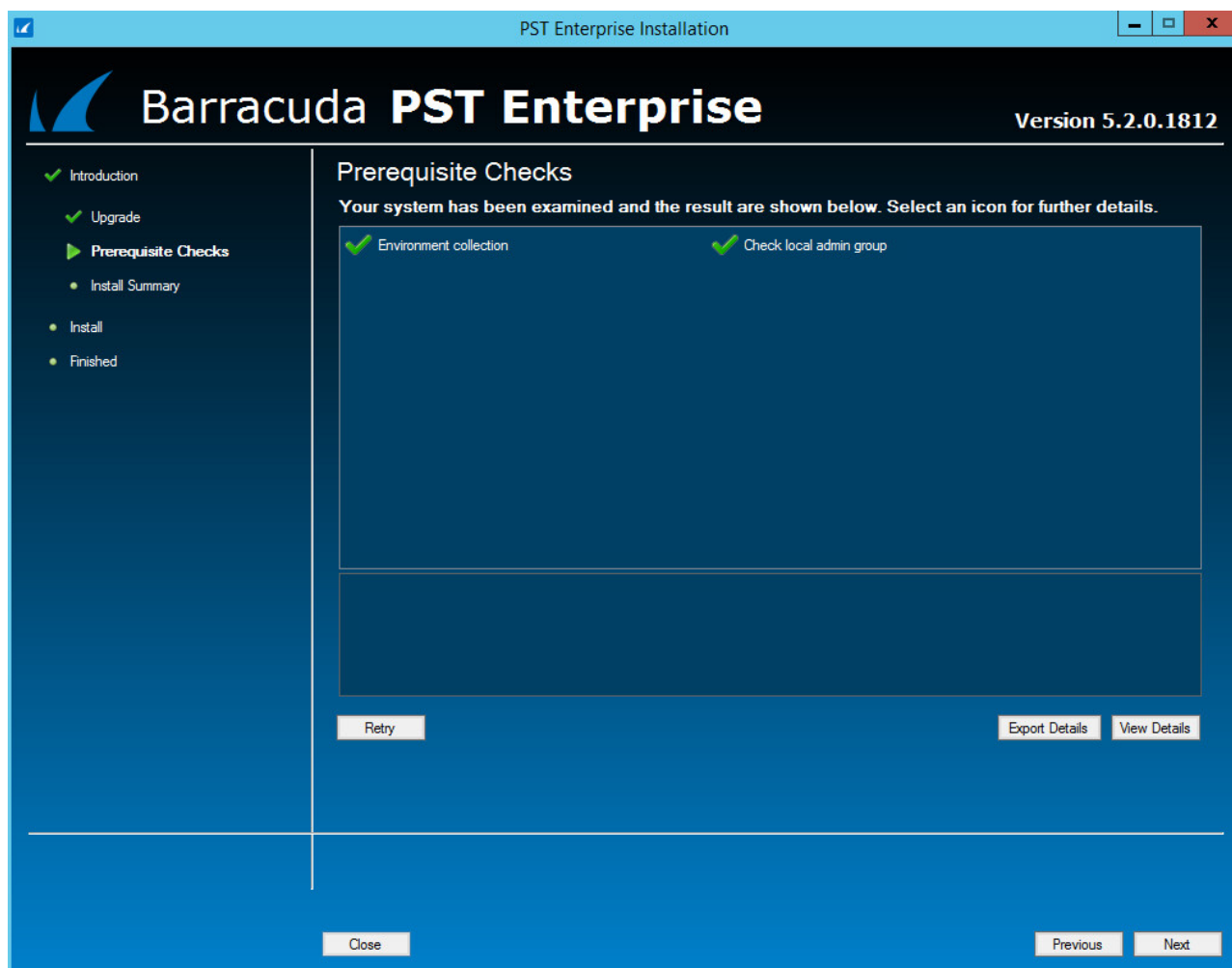
1. Download the [Barracuda PST Enterprise Installation Package](#) to your server.
2. Right-click **PSTEnterprise.<version>.exe** , and click **Run as administrator**.
3. The installation wizard launches and the **License Agreement** page displays. Read the license, select **I accept the terms in the license agreement** if you agree, and click **Next** to proceed:



4. The installer detects the existing installation and notifies you that this will be upgraded if you proceed. Click **Next** to confirm you want to upgrade the existing components:



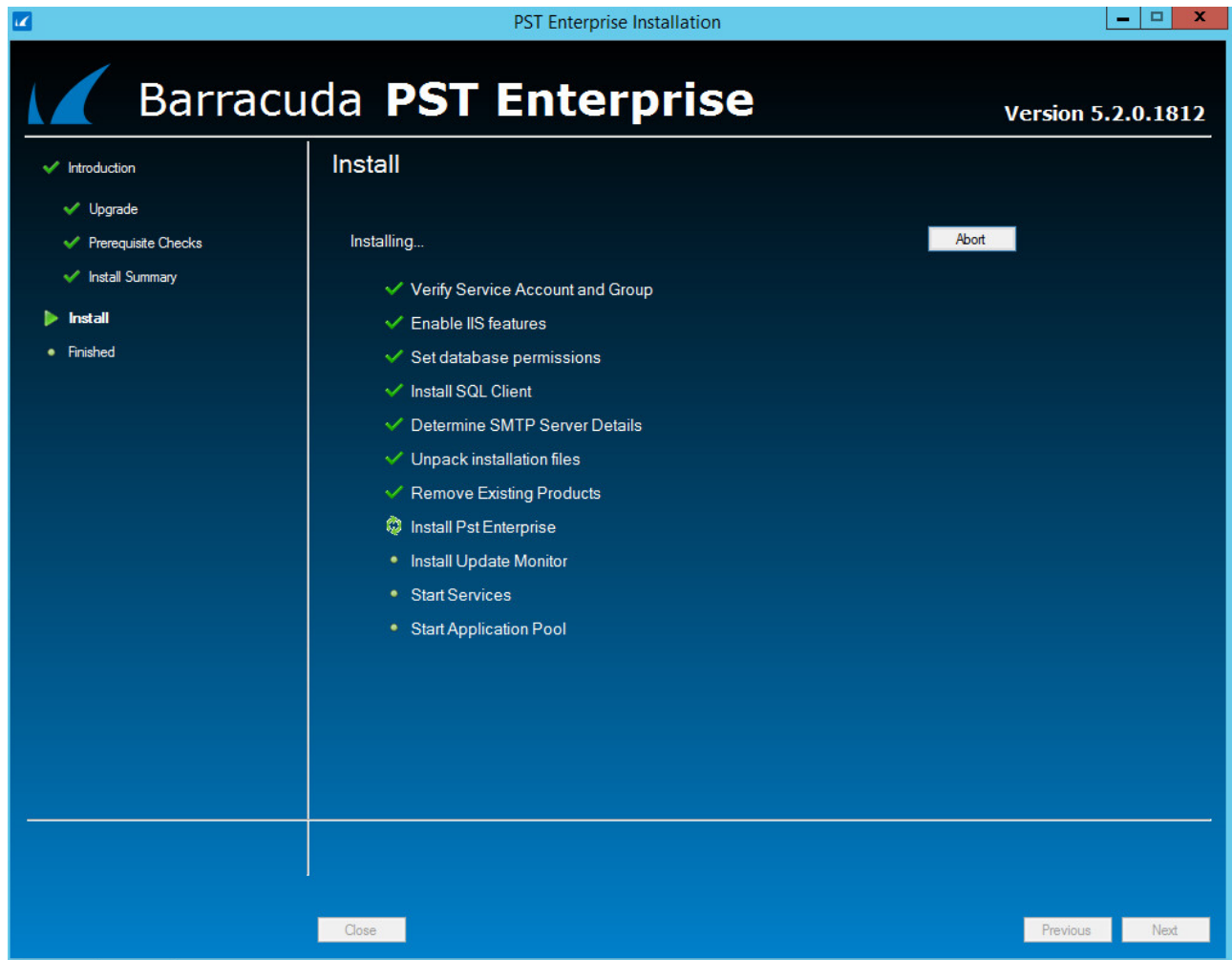
5. The installer runs prerequisite checks to ensure the system is suitable for upgrade. Click **Next** to proceed:



6. The installation summary displays. Click **Install** to start the upgrade process:

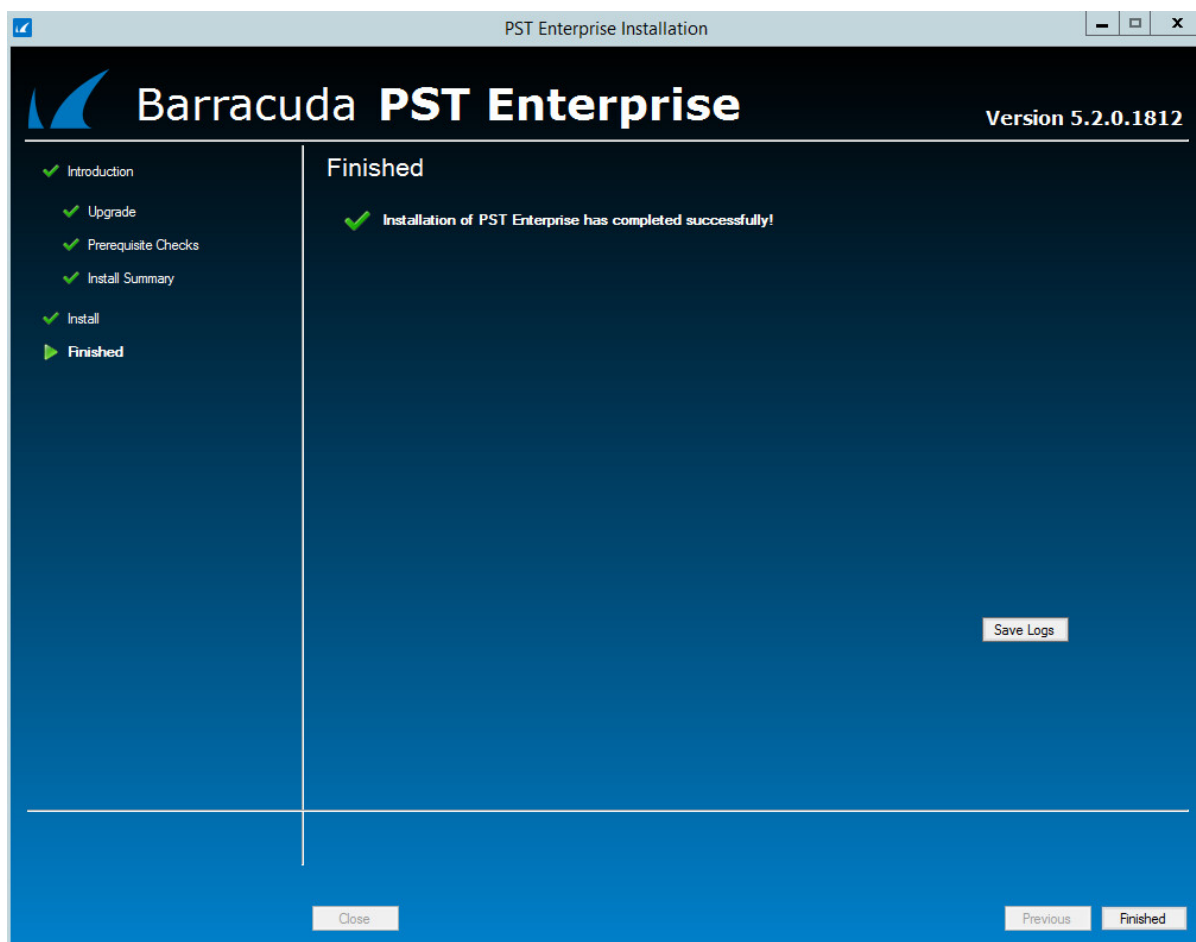


7. While the upgrade is in-progress, the current status displays:



8. Once complete, click **Finished** to close the installer. Any errors or warnings display on the status screen; click on the displayed link for advice on resolving any issues.

1. if required, click **Save Logs** to save a copy of the installation logging to **C:\PSTEnterpriseInstallLogs**:



9. If you are using Copy Agent server(s), perform an in-place upgrade on these machines in the same manner.

Processing can now proceed on the upgraded system.

Figures

1. PSTUpgrade1.PNG
2. PSTUpgrade2.PNG
3. PSTUpgrade3.PNG
4. PSTUpgrade4.PNG
5. PSTUpgrade5.PNG
6. PSTUpgrade6.PNG

© Barracuda Networks Inc., 2024 The information contained within this document is confidential and proprietary to Barracuda Networks Inc. No portion of this document may be copied, distributed, publicized or used for other than internal documentary purposes without the written consent of an official representative of Barracuda Networks Inc. All specifications are subject to change without notice. Barracuda Networks Inc. assumes no responsibility for any inaccuracies in this document. Barracuda Networks Inc. reserves the right to change, modify, transfer, or otherwise revise this publication without notice.