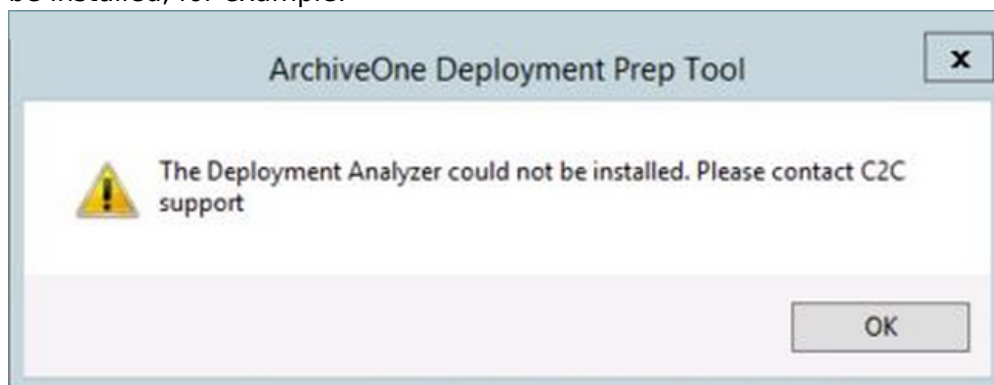


How to Resolve Errors when Installing ArchiveOne Deployment Analyzer

<https://campus.barracuda.com/doc/43221338/>

This article refers to the Barracuda ArchiveOne version 6.6 to 7.2, and Microsoft Windows Server 2012 and 2012 R2.

Before installing ArchiveOne on a server running Microsoft Windows Server 2012 or 2012 R2, you must first run the [ArchiveOne Deployment Analyzer](#) to check system suitability for installing ArchiveOne. If you encounter a warning message that the ArchiveOne Deployment Analyzer cannot be installed, for example:



This failure is returned because .NET Framework 3.5 is not installed which is required by the ArchiveOne Deployment Analyzer.

To resolve this issue, install .NET Framework 3.5 from Server Manager using the following steps:

1. Launch the Server Manager, and from the **Manage** menu, click **Add Roles and Features**.
2. Select **Role-based or feature-based installation**, and then click **Next**.
3. Select the local server from the **Server Pool**, and then click **Next**.
4. In the **Server Roles** page, click **Next**.
5. In the **Features** page, turn on **.NET Framework 3.5 Feature**, and then click **Next**.
6. In the **Confirmation** page, click **Install** to start the installation.
7. Upon completion, click **Finish** to return to the Server Manager.

You can now re-run the ArchiveOne Deployment Analyzer.

Figures

1. warning_msg.png

© Barracuda Networks Inc., 2024 The information contained within this document is confidential and proprietary to Barracuda Networks Inc. No portion of this document may be copied, distributed, publicized or used for other than internal documentary purposes without the written consent of an official representative of Barracuda Networks Inc. All specifications are subject to change without notice. Barracuda Networks Inc. assumes no responsibility for any inaccuracies in this document. Barracuda Networks Inc. reserves the right to change, modify, transfer, or otherwise revise this publication without notice.