

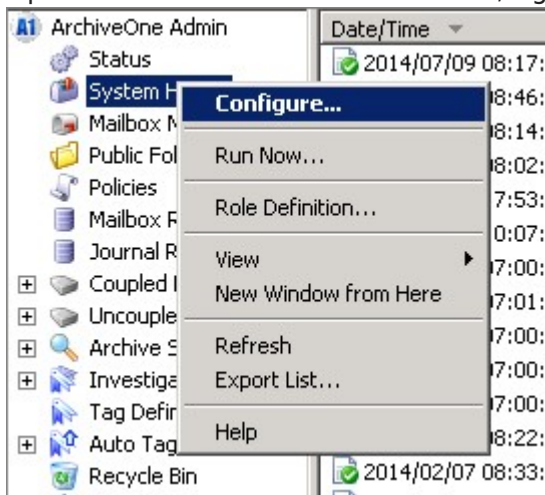
How to Change the Scheduled Run Time for the System Health Report

<https://campus.barracuda.com/doc/43221656/>

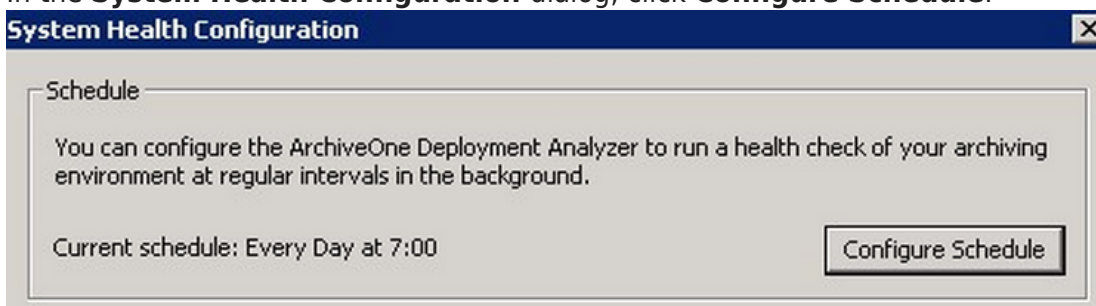
This article refers to the Barracuda ArchiveOne version 6.5 and higher.

System Health Reports are run daily, by default at 6:00 a.m. The system health tests include checks such as connectivity to Microsoft Exchange, search indexes, and archive repository retrieval. If you determine that the default time conflicts with other processes in your environment, such as backups, you can change the default time the report is run using the following steps:

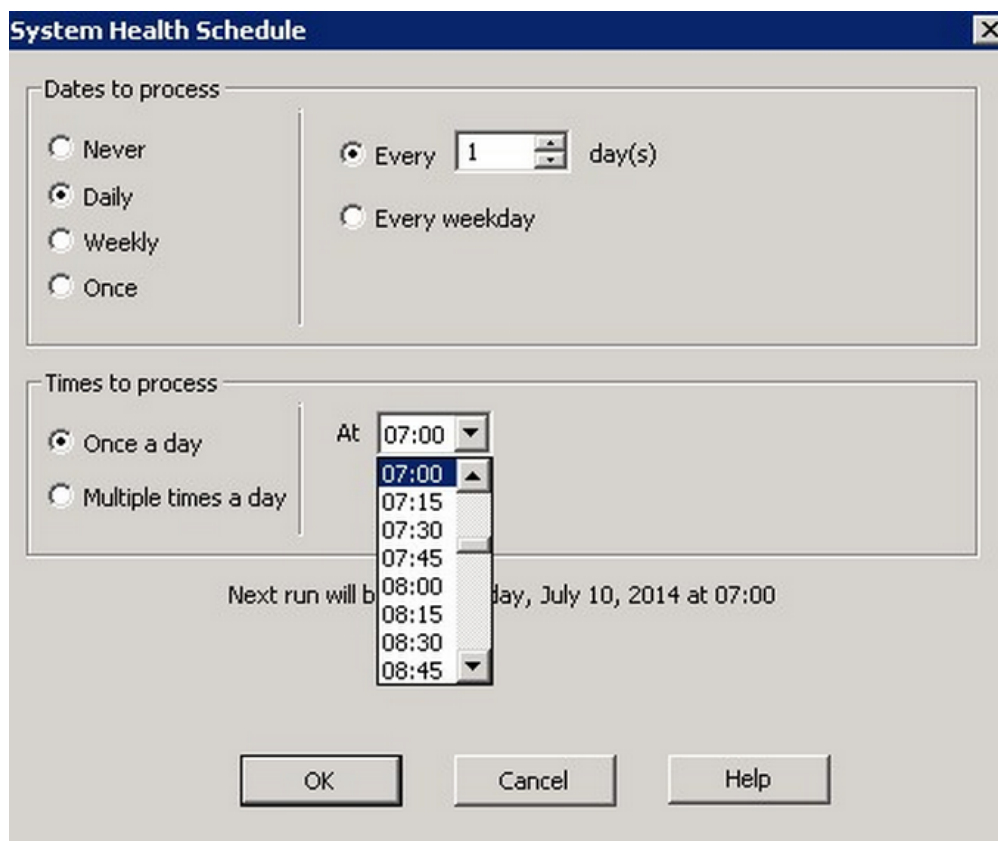
1. Open the ArchiveOne Admin Console, right-click **System Health**, and click **Configure**:



2. In the **System Health Configuration** dialog, click **Configure Schedule**:



3. In the **System Health Schedule** dialog, specify the time you want the test to run in the **Times to process** section; note that the clock is a 24-hour clock:



The dialog box is titled "System Health Schedule" and has a close button (X) in the top right corner. It contains two main sections: "Dates to process" and "Times to process".

Dates to process:

- ☐ Never
- ☒ Daily
- ☐ Weekly
- ☐ Once

Below these options, there are two radio buttons for frequency:

- ☒ Every day(s)
- ☐ Every weekday

Times to process:

- ☒ Once a day
- ☐ Multiple times a day

Next to the "Once a day" option is a label "At" followed by a time selection dropdown menu. The dropdown menu is open, showing a list of times from 07:00 to 08:45 in 15-minute increments. The time 07:00 is currently selected.

Below the time selection, there is a text field that says "Next run will be" followed by a date and time: "day, July 10, 2014 at 07:00".

At the bottom of the dialog box are three buttons: "OK", "Cancel", and "Help".

4. Click **OK** to close the dialog box and apply the new schedule.

Figures

1. configure.png
2. sys_health_config.png
3. sys_health_schedule.png

© Barracuda Networks Inc., 2024 The information contained within this document is confidential and proprietary to Barracuda Networks Inc. No portion of this document may be copied, distributed, publicized or used for other than internal documentary purposes without the written consent of an official representative of Barracuda Networks Inc. All specifications are subject to change without notice. Barracuda Networks Inc. assumes no responsibility for any inaccuracies in this document. Barracuda Networks Inc. reserves the right to change, modify, transfer, or otherwise revise this publication without notice.