

How to Configure Browse Archive

<https://campus.barracuda.com/doc/43222761/>

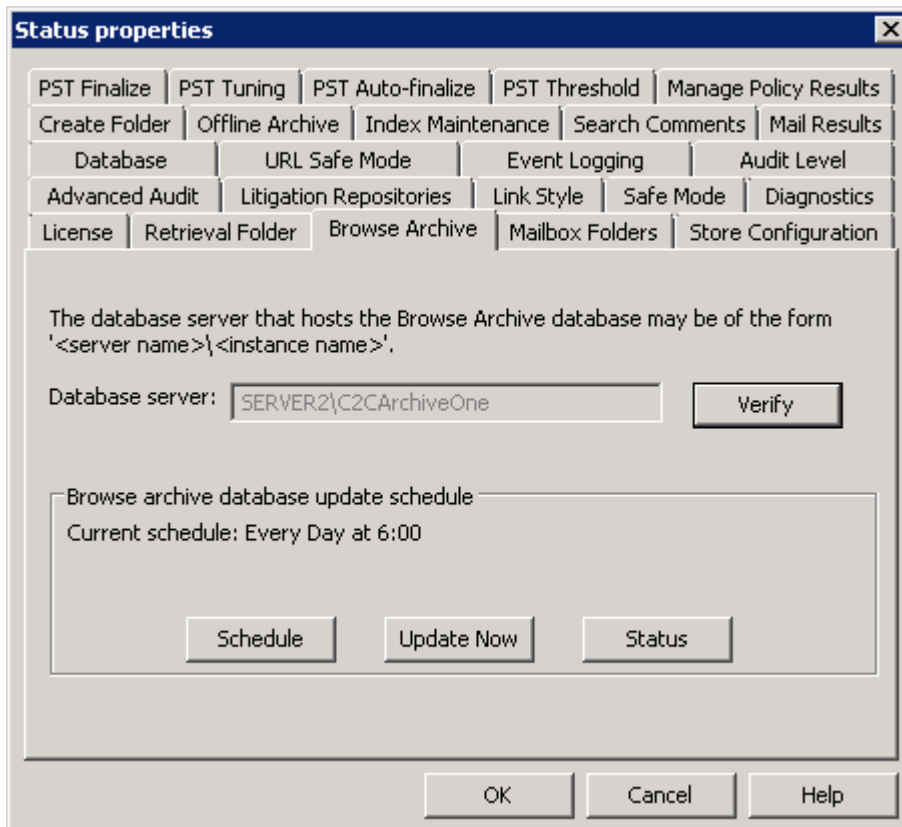
Browse Archive is a feature that enables users to browse and retrieve their archived mails through a website or folder within Microsoft Outlook. The archived mail is organized into the same folder hierarchy from which they were originally archived. This is what is used to display the archive hierarchy in the [AOneSearch website](#).

It is installed as part of the [Search and Retrieval website](#). This feature uses a SQL Server or SQL Server Express database as an interim store for transient data (i.e. non critical data) which must be installed on the network accessible from the ArchiveOne service and Search and Retrieval website.

Configure Browse Archive

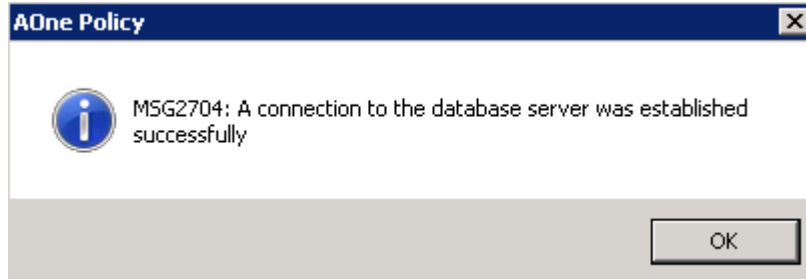
Browse Archive is configured during installation, however you can use the following steps to modify the Browse Archive configuration:

1. Run the ArchiveOne Administration Console.
2. Right-click **Status**, and click **Configure**.
3. Click the **Browse Archive** tab:

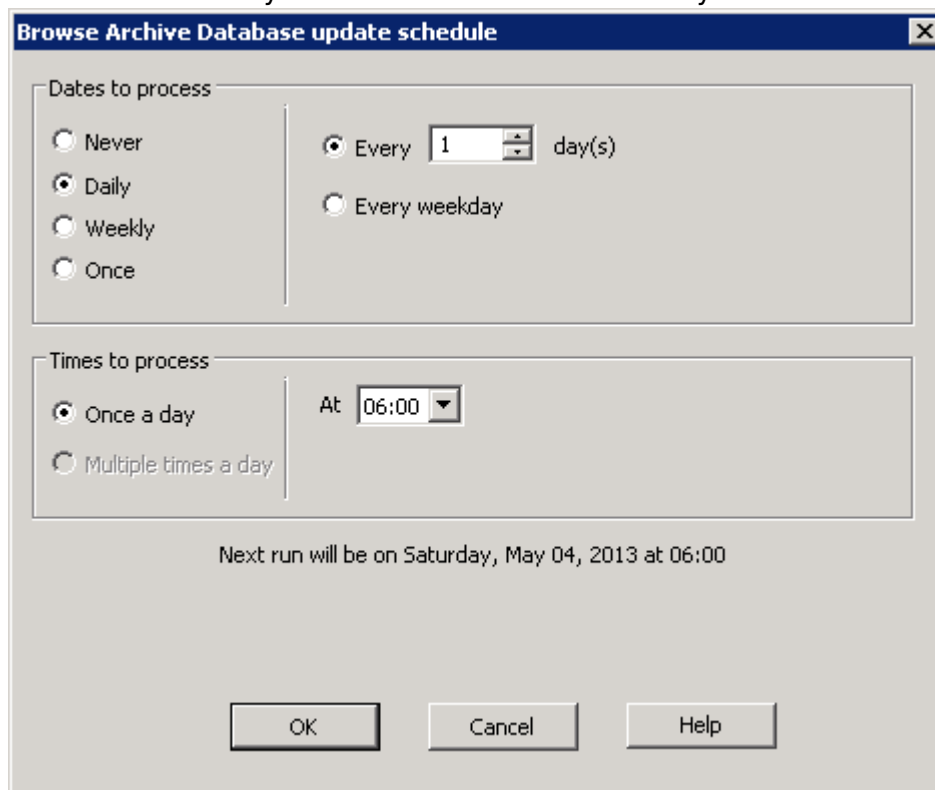


The screenshot shows the 'Status properties' dialog box with the 'Browse Archive' tab selected. The dialog has a title bar with a close button. Below the title bar is a grid of tabs: PST Finalize, PST Tuning, PST Auto-finalize, PST Threshold, Manage Policy Results, Create Folder, Offline Archive, Index Maintenance, Search Comments, Mail Results, Database, URL Safe Mode, Event Logging, Audit Level, Advanced Audit, Litigation Repositories, Link Style, Safe Mode, Diagnostics, License, Retrieval Folder, Browse Archive (selected), Mailbox Folders, and Store Configuration. The main content area contains the following text: 'The database server that hosts the Browse Archive database may be of the form '<server name>\<instance name>'. Below this is a text field for 'Database server:' containing 'SERVER2\C2CArchiveOne' and a 'Verify' button. Further down is a section titled 'Browse archive database update schedule' with a text field showing 'Current schedule: Every Day at 6:00'. At the bottom of this section are three buttons: 'Schedule', 'Update Now', and 'Status'. At the very bottom of the dialog are three buttons: 'OK', 'Cancel', and 'Help'.

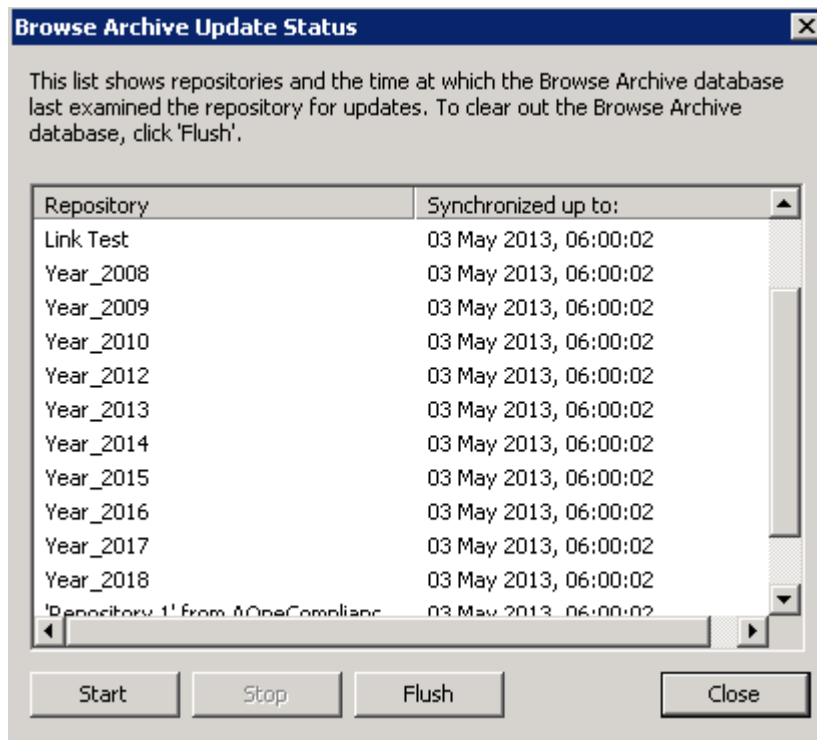
4. The **Database server** field displays the SQL server instanced used to store the Browse Archive database. Click **Verify** to confirm the ArchiveOne service can connect to the specified instance; a confirmation message displays if the connection is successful:



5. Click **OK** to close the dialog box. In the **Browse Archive** tab, the **Browse archive database update schedule** section displays the **Current schedule** including the date and time. Click **Schedule** to modify the Browse Archive database synchronization date and time:



6. Click **OK** to save your schedule changes and close the dialog. In the **Browse Archive** tab, click **Update Now** to begin a manual Browse Archive database synchronization. A confirmation displays when the synchronization begins.
7. In the **Browse Archive** tab, click **Status** to view the current synchronization status:



8. The following actions are available in the **Status** window:
 - **Flush**– Click to delete the entire content of the Browse Archive database.
 - **Start** – Once the archive is flushed, click **Start** to restart synchronization and repopulate the database.
 - **Stop** – Click to stop an in-progress synchronization.
9. Click **Close** to close the **Status** window.

When a user accesses the AOneSearch website, the folder structure displays by querying the Browse Archive database. If the database is not fully synchronized, more recently archived data may not be represented in the folder hierarchy as it has yet to be added to the Browse Archive database.

Generate Browse Archive Data

Use the following steps to generate Browse Archive data:

1. Run the ArchiveOne Administration Console.
2. Right-click **Status**, and click **Configuration**.
3. Click the **Browse Archive** tab, and then click **Update Now** to trigger an update.
4. Click **Status** to view the update progress.
5. Configure a schedule on which the database update can be regularly run.

The next time an archive policy runs, a **Browse archive** folder is created in user mailboxes, and when the folder is selected in Outlook, the Browse Archive website displays.

Note that the SQL Server database is not critical to the archive, it only holds transient / temporary data that helps with the **Browse Archive** feature, so there is no need to backup or provide resilience for the **Browse Archive** database. If you need to rebuild or reconfigure the SQL Server, just repeat the steps above to populate a new database.

Figures

1. browse_archive01.png
2. browse_archive02.png
3. browse_archive03.png
4. browse_archive04.png

© Barracuda Networks Inc., 2024 The information contained within this document is confidential and proprietary to Barracuda Networks Inc. No portion of this document may be copied, distributed, publicized or used for other than internal documentary purposes without the written consent of an official representative of Barracuda Networks Inc. All specifications are subject to change without notice. Barracuda Networks Inc. assumes no responsibility for any inaccuracies in this document. Barracuda Networks Inc. reserves the right to change, modify, transfer, or otherwise revise this publication without notice.