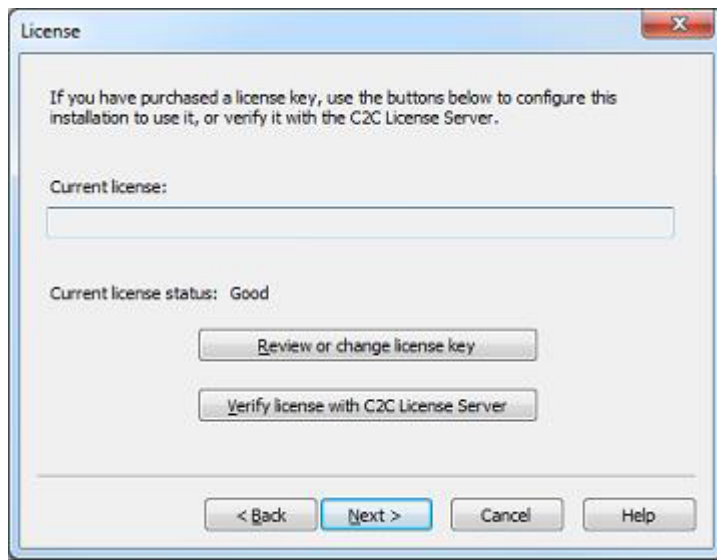


## License Page

<https://campus.barracuda.com/doc/43222821/>

Use the **License** page to configure your license key. Your license key is either an evaluation key or a key supplied by Barracuda Networks:



Click **Review or change license key** to review your system and license settings, or to enter a new license key. If you have been sent a new Full License key, you can type it or paste it into the **Current license** field, and then click **Test and install license**. Type it carefully, since a character entered incorrectly is reported as an invalid license. If the key is invalid, it does not overwrite your existing key. If your license is accepted, go to the [Mailbox Settings](#) page to configure which mailboxes you want to process. If you are using an Evaluation License, the expiration date displays.

If you encounter license problems, review this page to determine the issue. In some cases there may be a replacement license issued by the License Server. If you think this is the case, click **Verify license with License Server**. For additional information, refer to [Licensing](#) and [Understanding License Restrictions](#).



## Figures

1. license\_page.png

© Barracuda Networks Inc., 2020 The information contained within this document is confidential and proprietary to Barracuda Networks Inc. No portion of this document may be copied, distributed, publicized or used for other than internal documentary purposes without the written consent of an official representative of Barracuda Networks Inc. All specifications are subject to change without notice. Barracuda Networks Inc. assumes no responsibility for any inaccuracies in this document. Barracuda Networks Inc. reserves the right to change, modify, transfer, or otherwise revise this publication without notice.