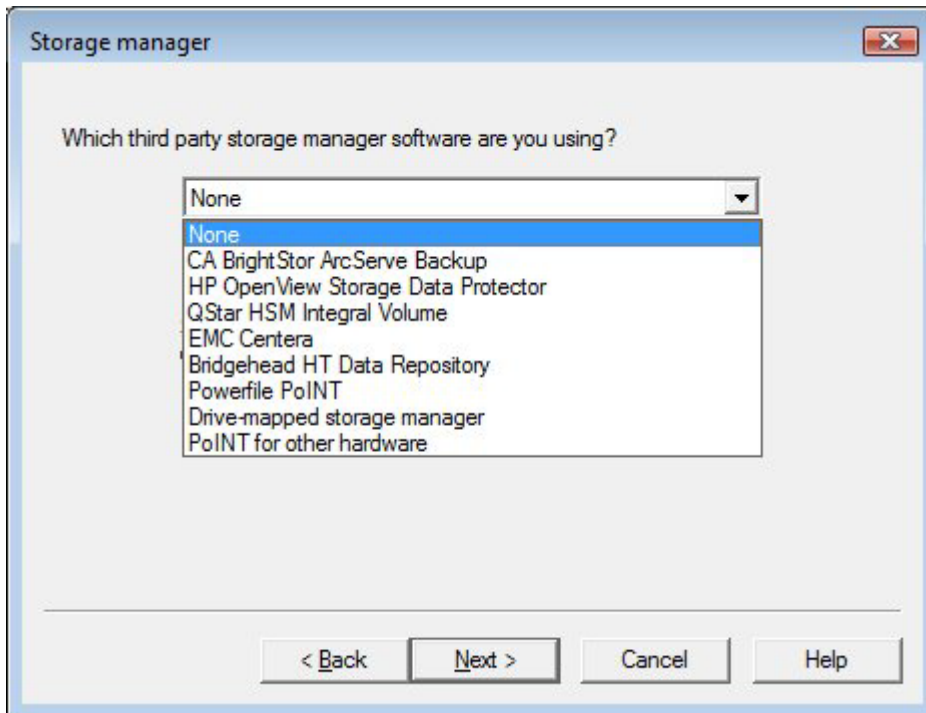


Storage Manager Page

<https://campus.barracuda.com/doc/43222936/>

The **Storage Manager** page displays in the Repository Configuration Wizard, and allows you to configure third-party storage management software if required:



If you are using local storage, or a mapped drive for network storage which does not require local caching, select **None**. The drop-down list displays all storage managers configured on the ArchiveOne Service server, or any storage managers for which the configuration cannot be confirmed. For more information, see [Installing a Storage Manager](#).

If you choose not to use a storage manager and instead write files to local hard drive (or fast connected storage emulating local hard drive), you must ensure it is adequately backed up.

Figures

1. storage_mgr.png

© Barracuda Networks Inc., 2019 The information contained within this document is confidential and proprietary to Barracuda Networks Inc. No portion of this document may be copied, distributed, publicized or used for other than internal documentary purposes without the written consent of an official representative of Barracuda Networks Inc. All specifications are subject to change without notice. Barracuda Networks Inc. assumes no responsibility for any inaccuracies in this document. Barracuda Networks Inc. reserves the right to change, modify, transfer, or otherwise revise this publication without notice.