

## How to Use Layer 7 Application Control in Firewall Rules

<https://campus.barracuda.com/doc/43847224/>

Layer 7 Application Control is a legacy feature of the Barracuda NG Firewall. Barracuda Networks recommends using [Application Control 2.0](#) instead.

After enabling Layer 7 Application Control, you can configure it in your firewall rules. You can choose to use the default application detection and handling policies or configure policies that are specific to the rule.

To use Layer 7 Application Control, you must have a valid **Energize Updates** subscription installed on the Barracuda NG Firewall.

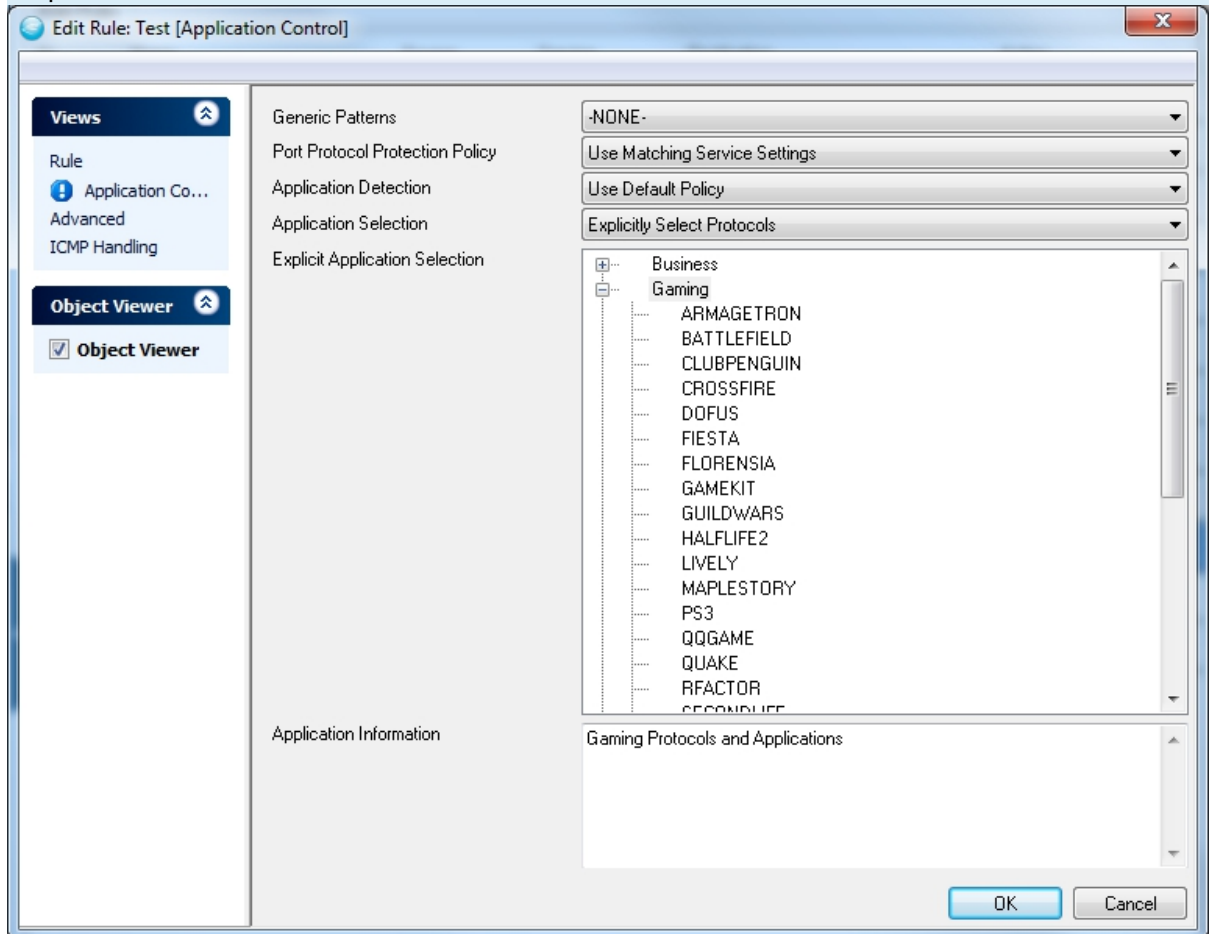
You must also enable Layer 7 Application Control before using it in your firewall rules. For more information, see [How to Enable Layer 7 Application Profiling](#).

### Configure Application Detection

1. Go to **CONFIGURATION > Configuration Tree > Box > Virtual Servers > your virtual server > Assigned Services > Firewall > Forwarding Rules**.
2. Double-click the required firewall rule.
3. From the **Views** menu in the left navigation pane, select **Application Control**.
4. From the **Application Detection** list, select an application handling policy:
  - **NONE** - Application detection is deactivated.
  - **Use Default Policy** - Uses the default application detection policy as configured on the **General Firewall Configuration** page.
  - **Detect Only** - Reports detected applications in the firewall access cache but takes no action.
  - **Limit Bandwidth** - Limits the bandwidth for the traffic of detected applications.
  - **Drop Traffic** - Blocks the traffic for detected applications.
  - **Assign QoS-Tree** - Assigns a Quality of Service tree to the traffic. See [Traffic Shaping](#) to learn more about Quality of Service profiles.
5. From the **Application Selection** list, select an application detection policy:
  - **Use Default Protocol Selection** - Uses the default application detection policy as configured on the **General Firewall Configuration** page.
  - **Explicitly Select Protocols** - Lets you explicitly select which applications must be detected by the Barracuda NG Firewall. From the **Explicit Application Selection** list, double-click the required applications.

The **Protocols** column represents all available protocols. To select an application,

double-click it. The **Selected Protocols** column represents the currently selected protocols that will be detected.



6. Click **OK**.
7. Click **Send Changes** and **Activate**.

## Figures

### 1. app\_select.jpg

© Barracuda Networks Inc., 2019 The information contained within this document is confidential and proprietary to Barracuda Networks Inc. No portion of this document may be copied, distributed, publicized or used for other than internal documentary purposes without the written consent of an official representative of Barracuda Networks Inc. All specifications are subject to change without notice. Barracuda Networks Inc. assumes no responsibility for any inaccuracies in this document. Barracuda Networks Inc. reserves the right to change, modify, transfer, or otherwise revise this publication without notice.