

MDaemon Messaging Server SMTP Gateway Journaling

<https://campus.barracuda.com/doc/44435152/>

This article refers to the Barracuda Message Archiver firmware version 5.0 and higher, and the MDaemon Messaging Server version 15.0.0.

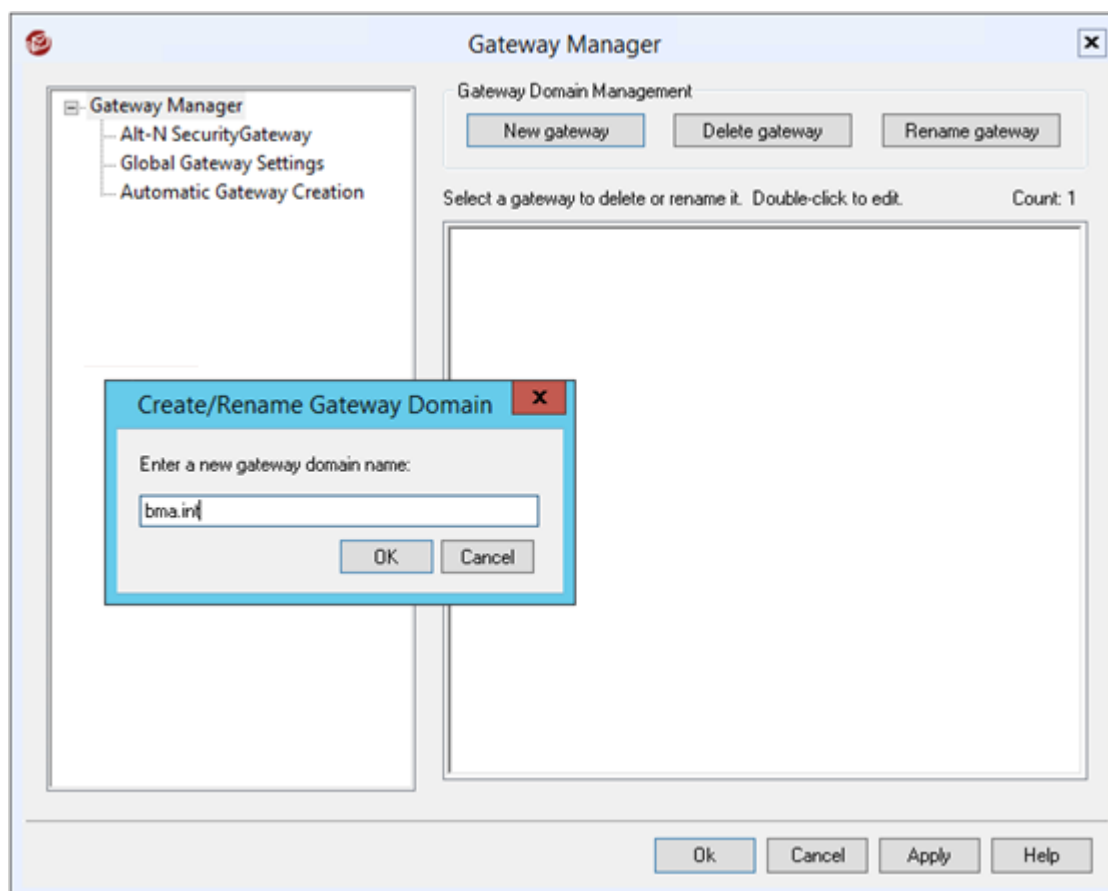
Use the following steps to configure MDaemon Messaging Server SMTP Gateway Journaling to forward a copy of all incoming and outgoing messages to the Barracuda Message Archiver.

Step 1. Configure a Gateway

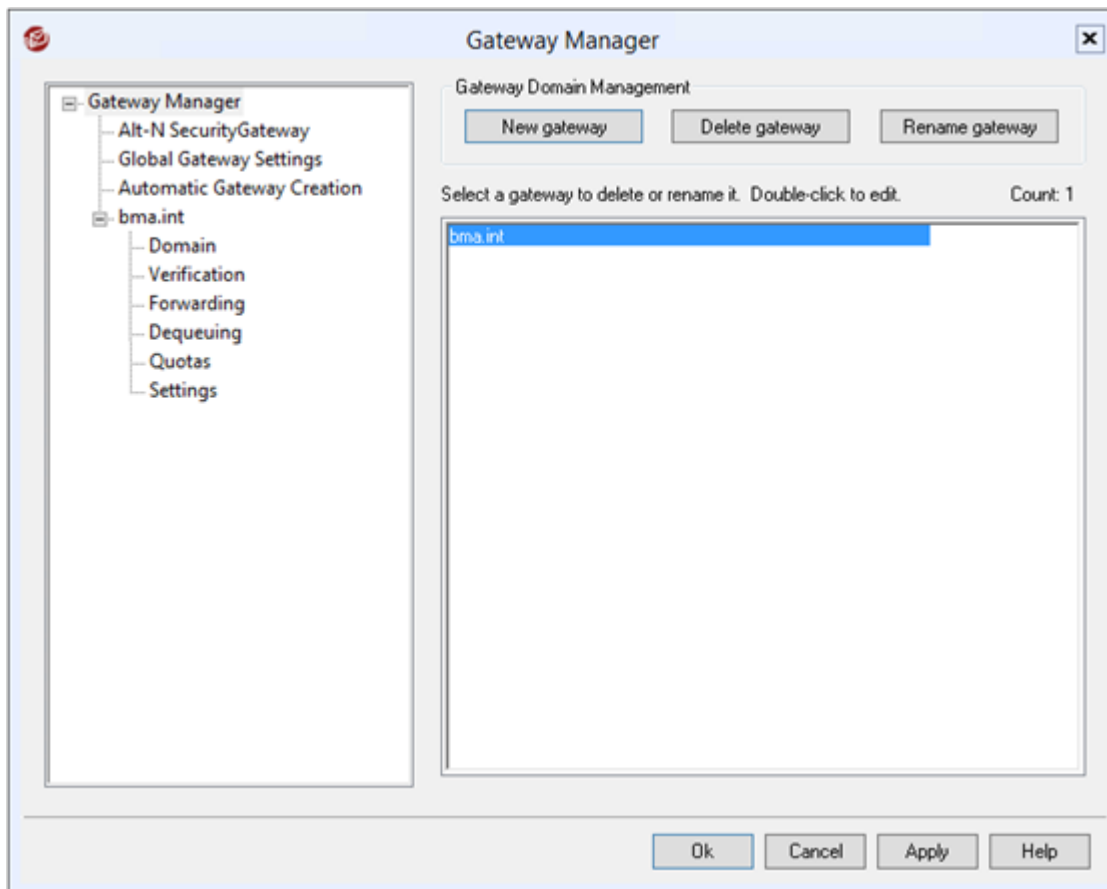
1. From the MDaemon menu bar, click the **Setup** menu, and click **Gateway Manager**:

Setup	Security	Accounts	Catalogs	Queues
Server Settings...				F2
Domain Manager...				Alt+F2
Account Manager...				Ctrl+M
Gateway Manager...				Ctrl+G
Mailing List Manager...				Alt+G
Public Folder Manager...				Alt+P
Web & IM Services...				Ctrl+W
Event Scheduling...				Ctrl+E
Mobile Device Management...				Alt+M
Preferences...				Ctrl+O

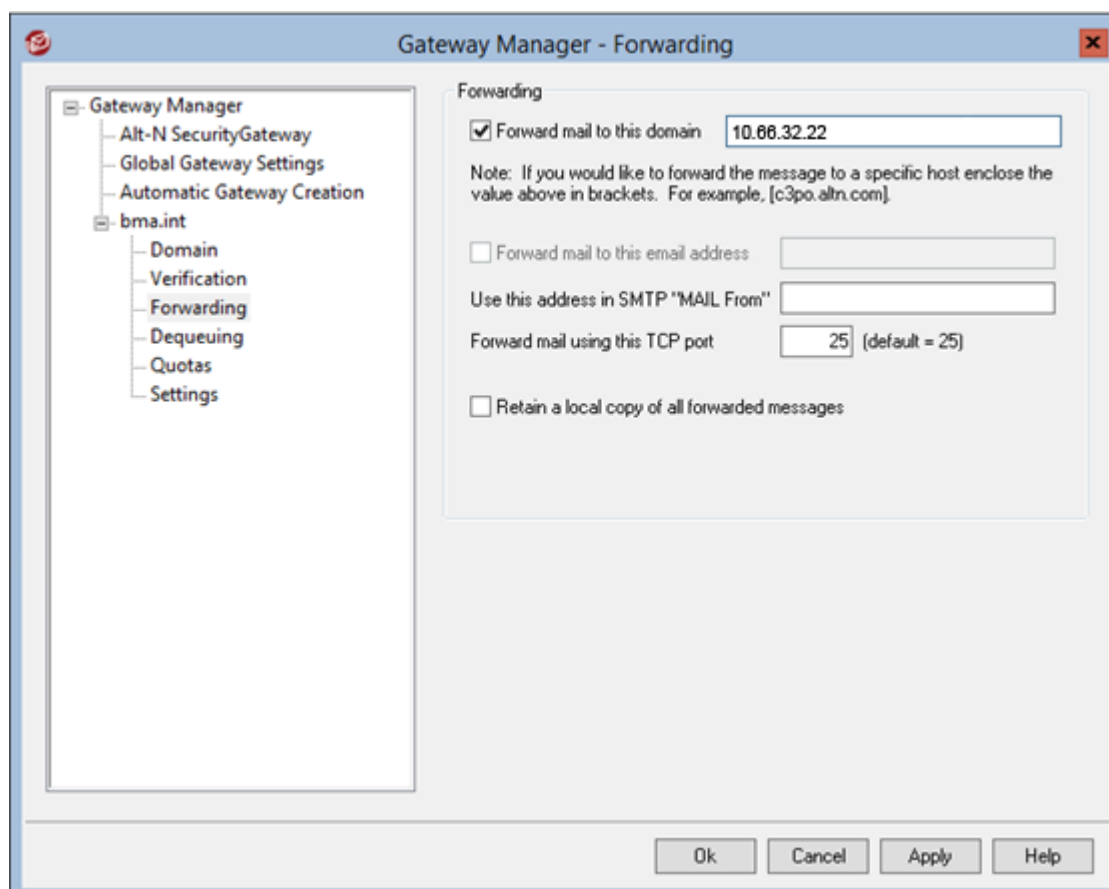
2. In the **Gateway Manager** dialog box, click **New gateway**, and enter the domain name as **bma.int**:



3. Click **OK**, and then click **Apply**. The gateway is added:

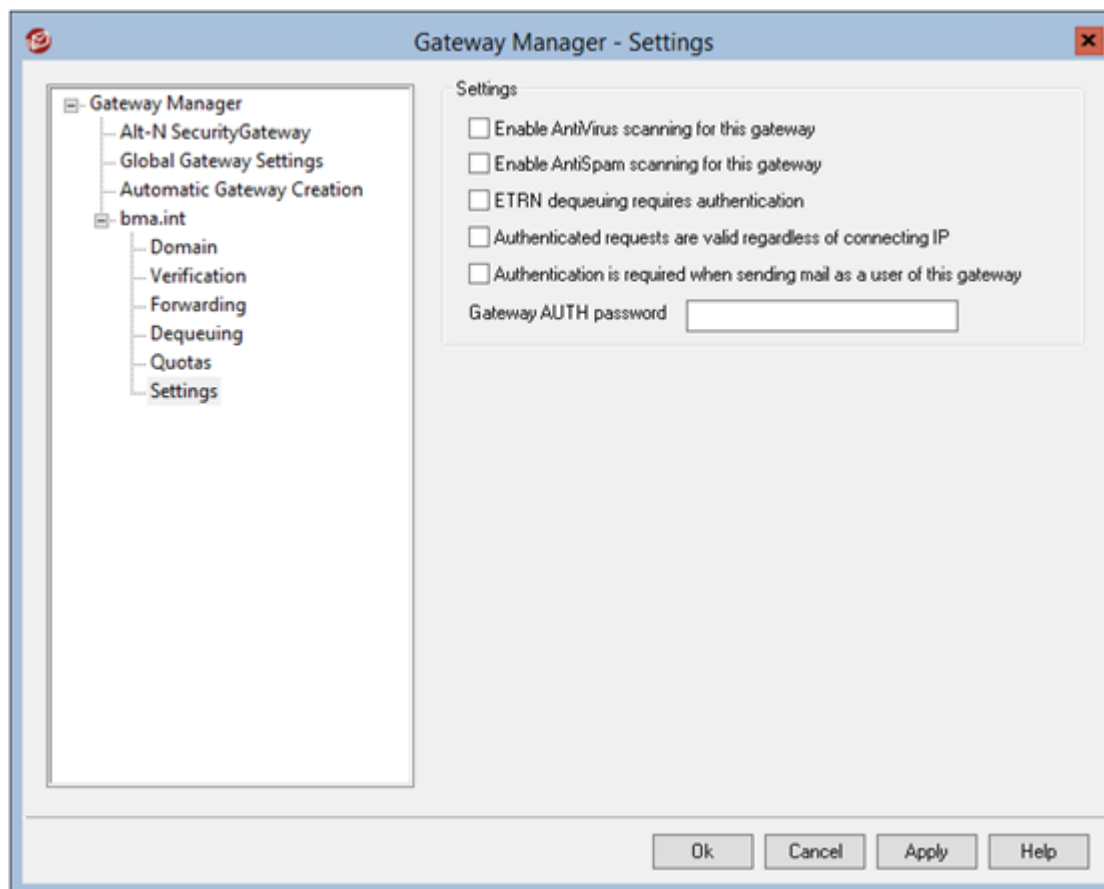


4. In the left pane, click **Forwarding**.
5. In the **Forwarding** section in the right pane, select **Forward mail to this domain**, and then enter the fully qualified domain name (FQDN) or IP address of your Barracuda Message Archiver in the associated field:



6. In the left pane, click **Settings**.

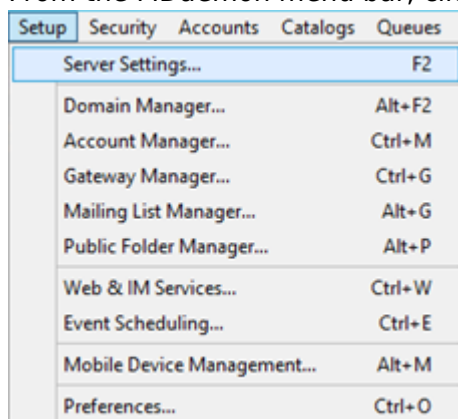
7. In the **Settings** section in the right pane, clear all of the options:



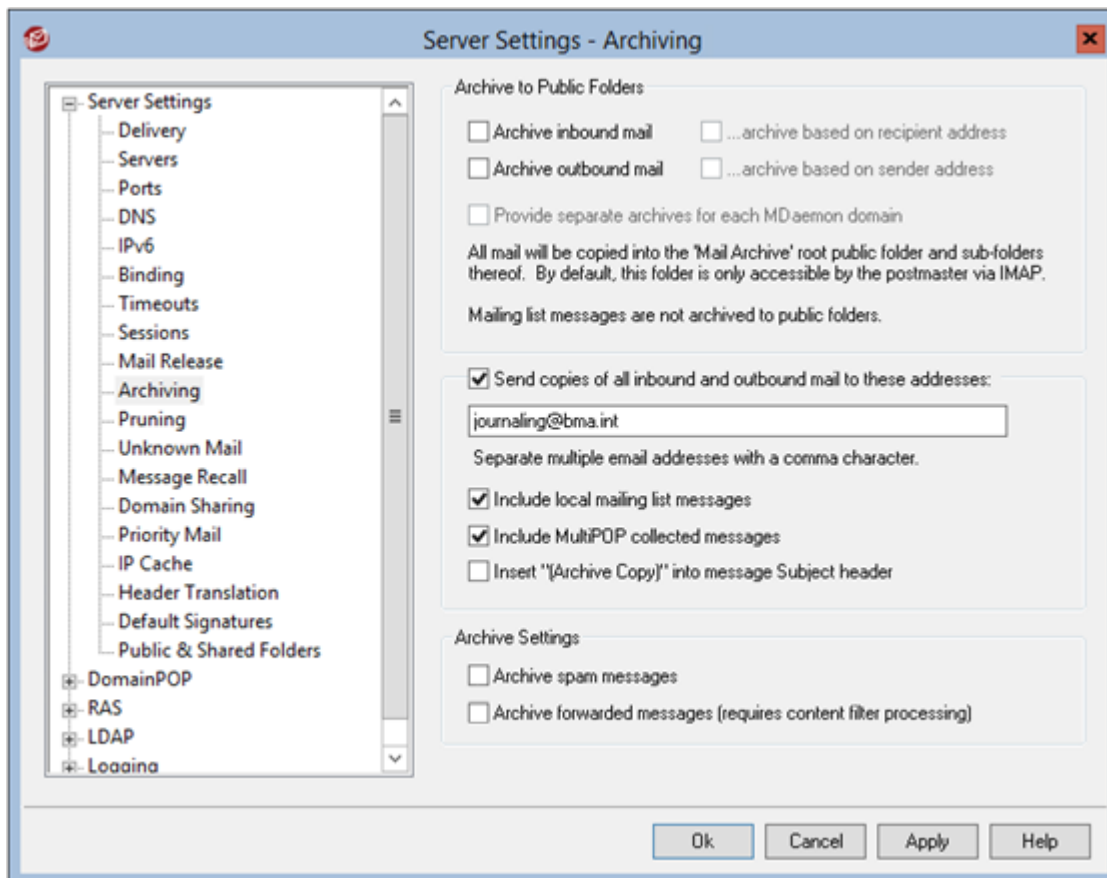
8. Click **Apply**, and then click **Ok** to save your settings and close the dialog box.

Step 2. Enable Journaling

1. From the MDAemon menu bar, click the **Setup** menu, and click **Server Settings**:

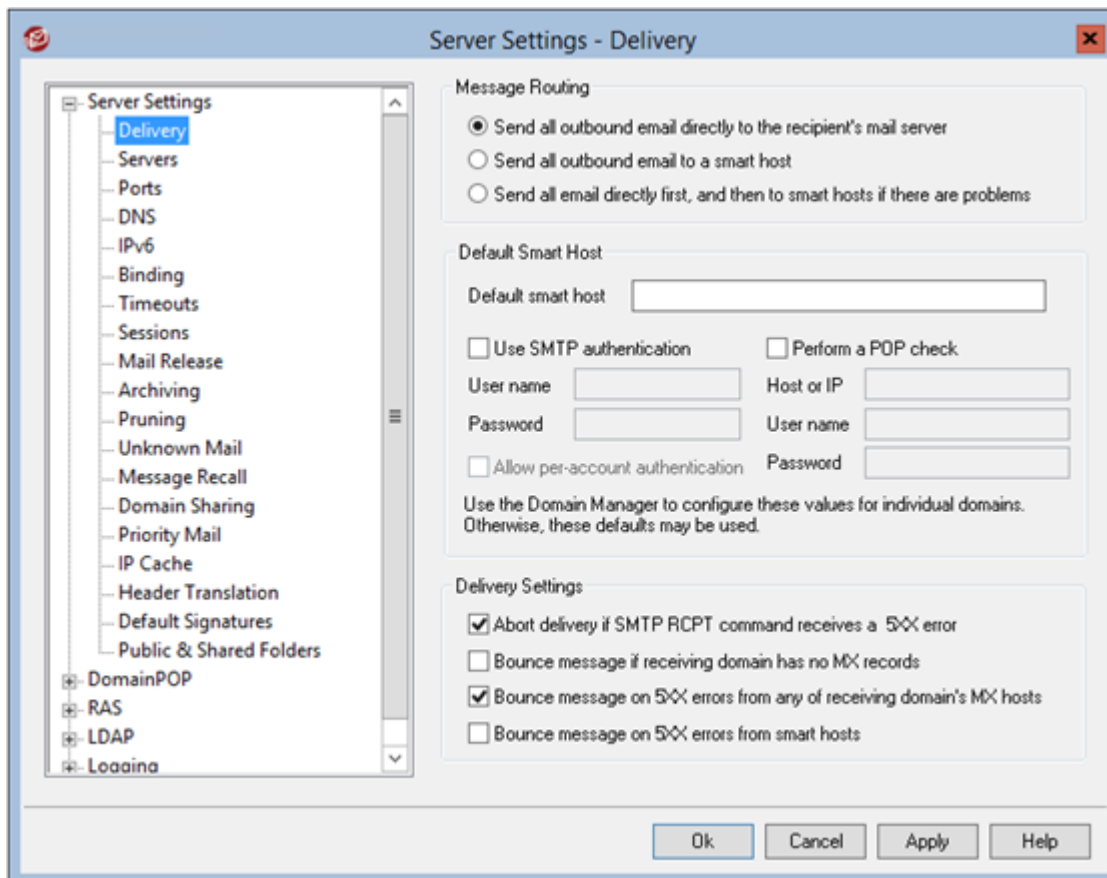


2. Expand **Server Settings** in the left pane of the dialog box, and click **Archiving**.
3. In the **Archiving** pane, select **Send copies of all inbound and outbound mail to these addresses**, and type `journaling@bma.int` in the associated field:



You can optionally select the options in the **Archive Settings** section to archive items such as spam messages.

4. Click **Delivery** in the left pane, and verify the **Default Smart Host** settings:

**Important!**

If a **Default smart host** is configured, SMTP Gateway journaling can only be used if an external relay is configured.

5. Click **Apply**, and then click **Ok** to save your settings and close the dialog box.

Figures

1. mdaemon01.png
2. mdaemon02a.png
3. mdaemon02.png
4. mdaemon03.png
5. mdaemon04.png
6. mdaemon05.png
7. mdaemon06.png
8. mdaemon07.png

© Barracuda Networks Inc., 2024 The information contained within this document is confidential and proprietary to Barracuda Networks Inc. No portion of this document may be copied, distributed, publicized or used for other than internal documentary purposes without the written consent of an official representative of Barracuda Networks Inc. All specifications are subject to change without notice. Barracuda Networks Inc. assumes no responsibility for any inaccuracies in this document. Barracuda Networks Inc. reserves the right to change, modify, transfer, or otherwise revise this publication without notice.