

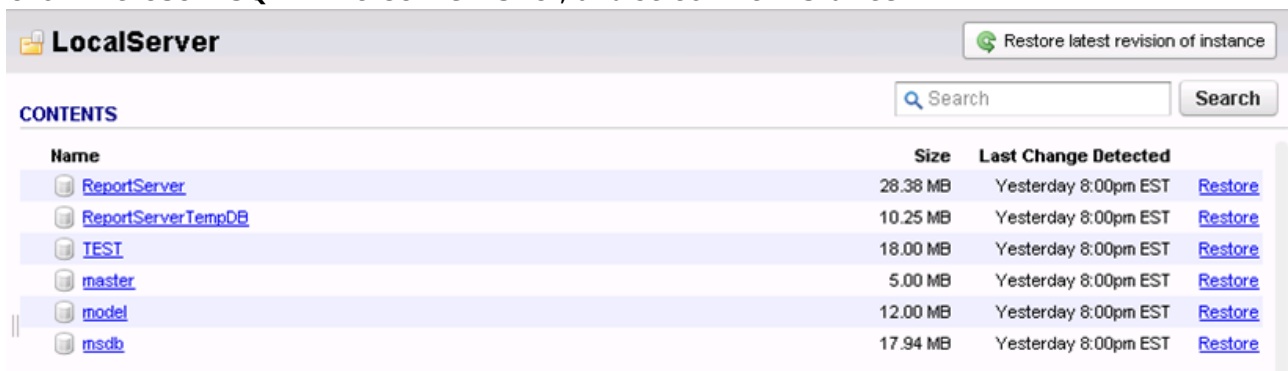
How to Restore Microsoft SQL Server 2012 Database to a File System

<https://campus.barracuda.com/doc/44436905/>

This article refers to version 6.3 and higher, and Microsoft SQL Server 2012 and above databases.

Use the following steps to restore a Microsoft SQL Server 2012 or higher database to a file system:

1. Log in to the Barracuda Backup web interface or local UI, go to the **Restore > Restore Browser** page. Select and expand the SQL server data source in the left pane.
2. Click **Microsoft SQL** in the **Contents** list, and select the **Instance**:

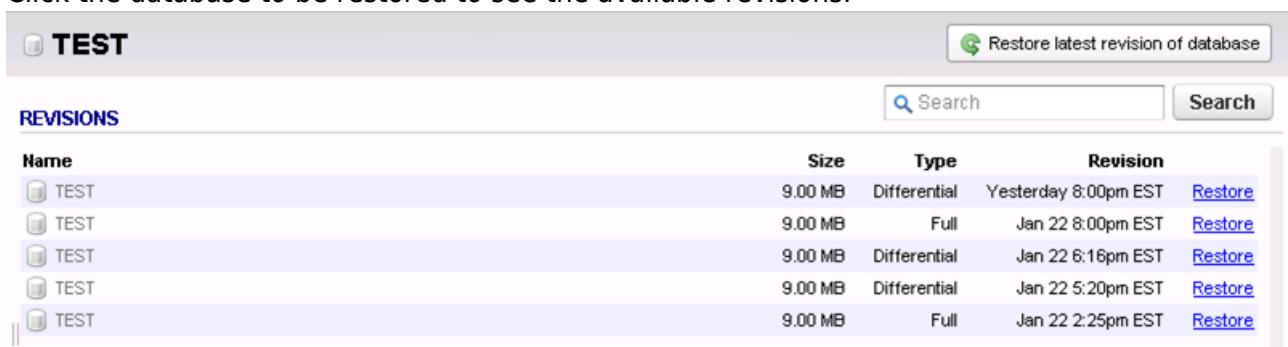


LocalServer Restore latest revision of instance

Search

Name	Size	Last Change Detected	
ReportServer	28.38 MB	Yesterday 8:00pm EST	Restore
ReportServerTempDB	10.25 MB	Yesterday 8:00pm EST	Restore
TEST	18.00 MB	Yesterday 8:00pm EST	Restore
master	5.00 MB	Yesterday 8:00pm EST	Restore
model	12.00 MB	Yesterday 8:00pm EST	Restore
msdb	17.94 MB	Yesterday 8:00pm EST	Restore

3. Click the database to be restored to see the available revisions:



TEST Restore latest revision of database

Search

Name	Size	Type	Revision	
TEST	9.00 MB	Differential	Yesterday 8:00pm EST	Restore
TEST	9.00 MB	Full	Jan 22 8:00pm EST	Restore
TEST	9.00 MB	Differential	Jan 22 6:16pm EST	Restore
TEST	9.00 MB	Differential	Jan 22 5:20pm EST	Restore
TEST	9.00 MB	Full	Jan 22 2:25pm EST	Restore

4. Click **Restore** to the right of the database to restore; the **Restore** dialog box displays. Set the following options:
 1. **Restore to** - Select **Original Location**
 2. **Database name** - Do not change this field
 3. **Instance** - Select **Original Instance**
 4. **Method** - Select **Restore to file system** to restore a full database to a file (.mdf/.ldf). Enter the restore file path in the associated field, or leave the default value:

Restore

Restore to:

☒ **Original Location**

☐ Microsoft SQL Server (SQLSERVER-CAM.CUD, ▼)

☐ Other Hostname or IP Address

Enter the resolvable hostname or IP address of the restore location.

Method:

☐ **Restore normally**

☐ **Restore to an alternate location:**

☒ **Restore to file system:**

Warning: If the name you've specified is the same as a database that already exists on the target server, the restore will always overwrite the database on that server, even when restoring to an alternate path.

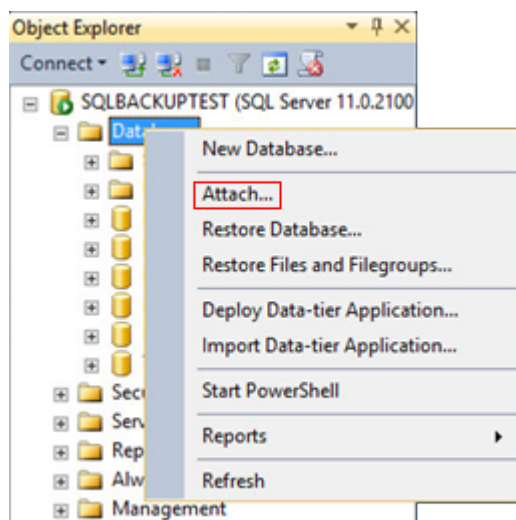
Cancel

Start Restore

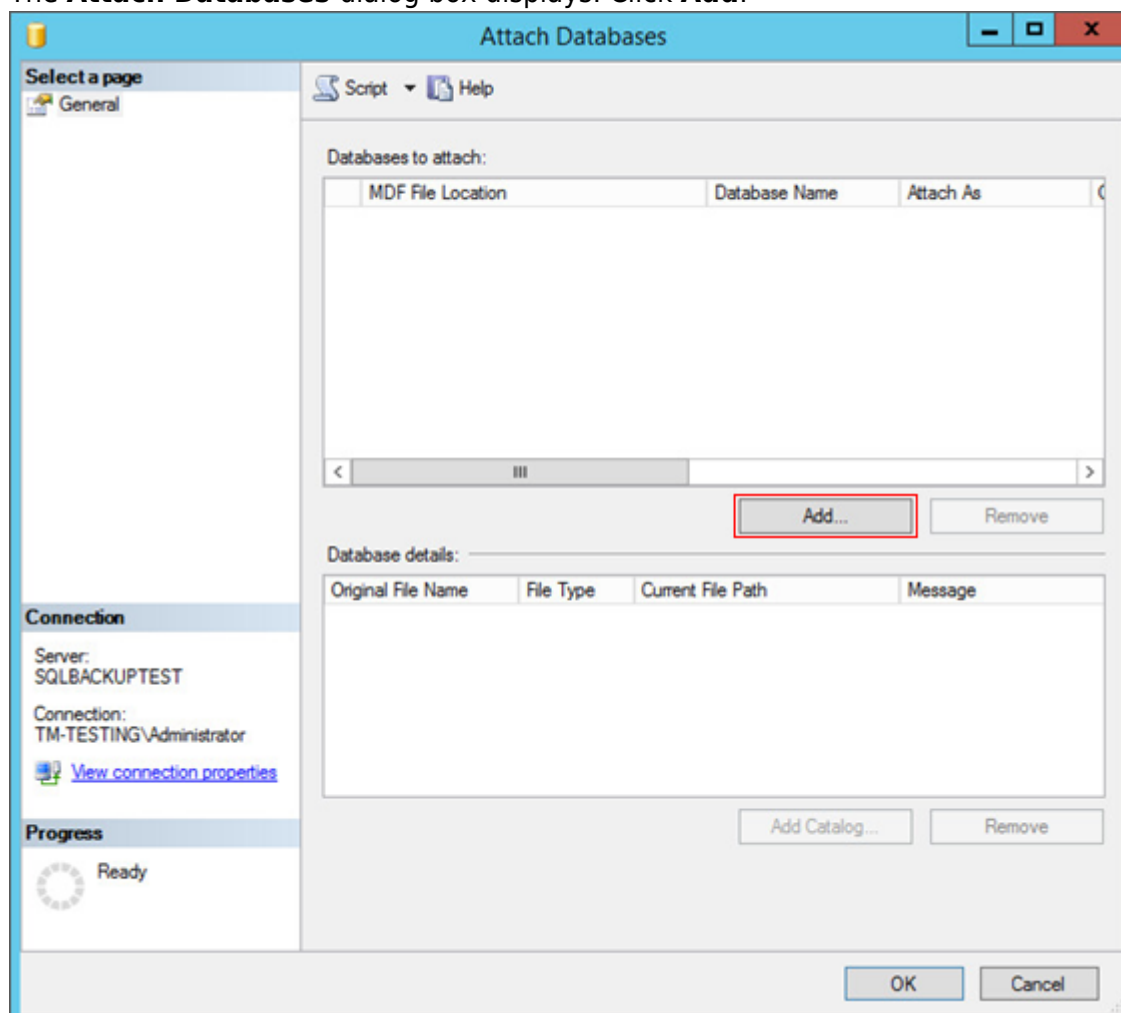
If you specify a name that is the same as an existing database on the target server, the restore *always* overwrites the database on that server, even when restoring to an alternate path.

Flat file restores can only be completed on individual databases. Use an alternate name if you do not want to overwrite the existing database,

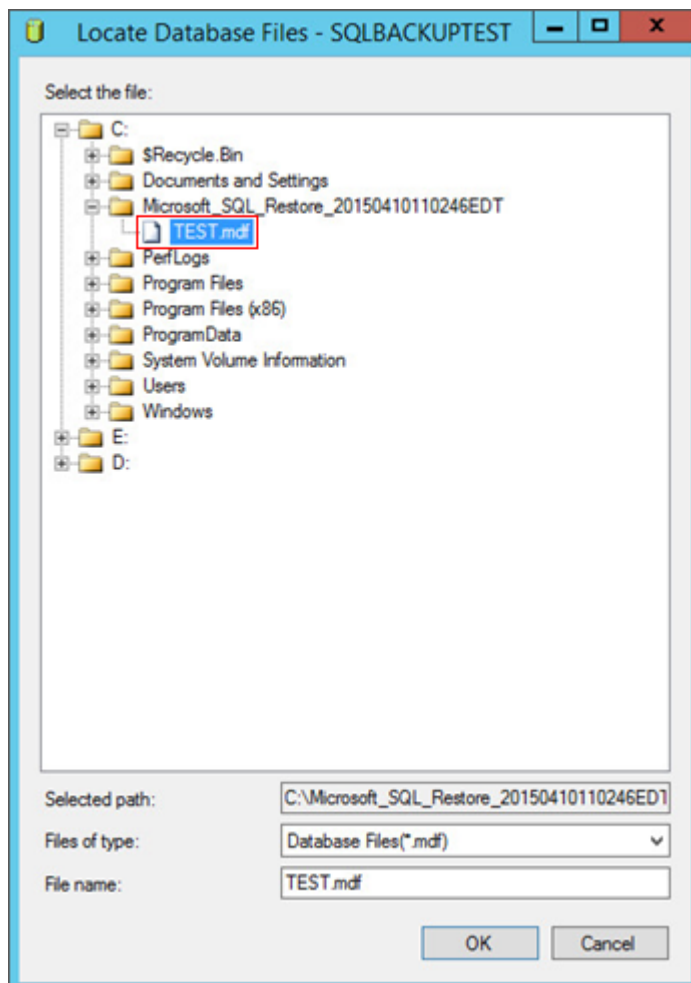
5. Click **Start Restore**. Once the restore is complete, the **Success** dialog displays; click **OK** to close the dialog box.
6. Open Microsoft SQL Server Management Studio, right-click **Databases**, and click **Attach**:



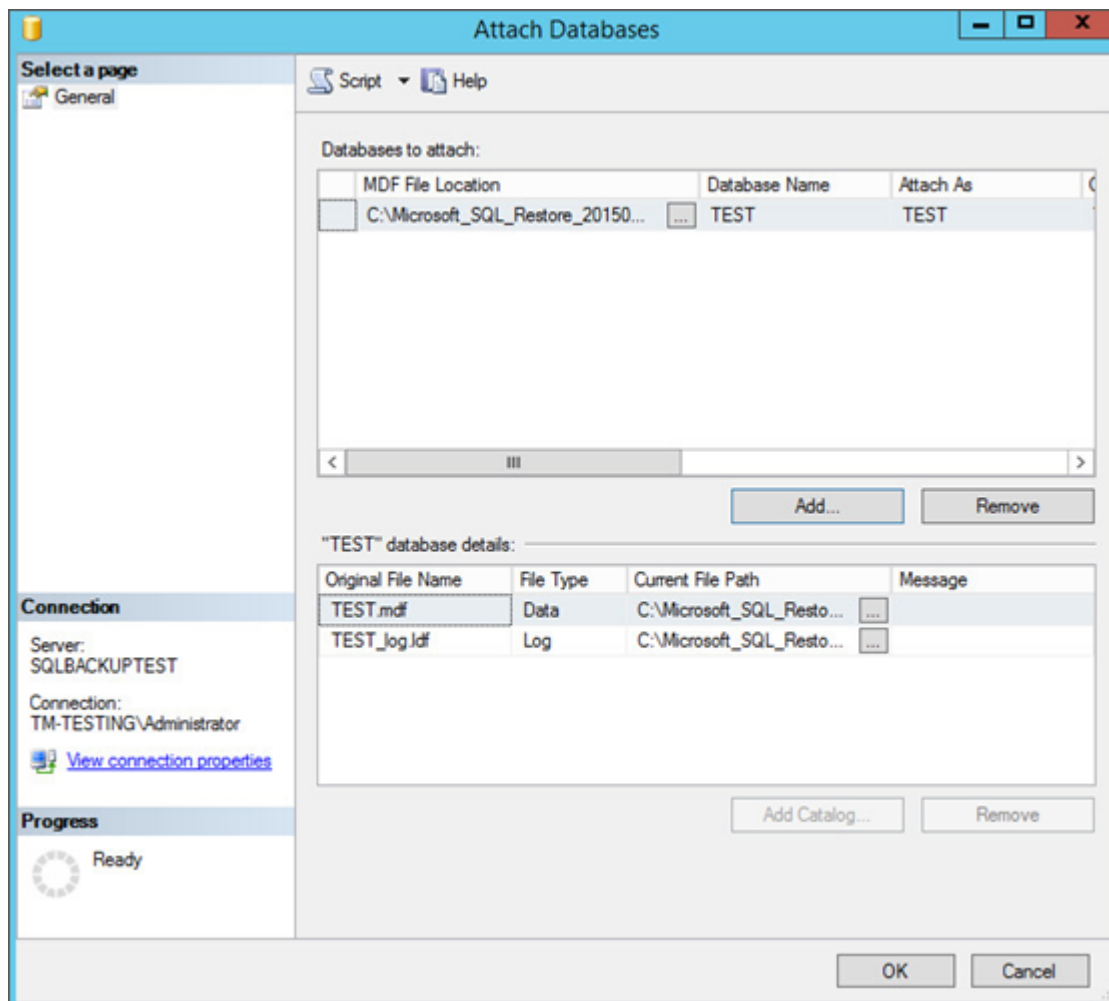
7. The **Attach Databases** dialog box displays. Click **Add**:



8. Browse to and select the restored **.mdf** file:



9. Click **OK** to attach the database:



10. Click **OK** to close the dialog box.

Figures

1. sql_localserver.png
2. sql_revision_filesystem.png
3. SQL_FileSysRestore.png
4. attach.png
5. attach02.png
6. select_test.png
7. attach03.png

© Barracuda Networks Inc., 2024 The information contained within this document is confidential and proprietary to Barracuda Networks Inc. No portion of this document may be copied, distributed, publicized or used for other than internal documentary purposes without the written consent of an official representative of Barracuda Networks Inc. All specifications are subject to change without notice. Barracuda Networks Inc. assumes no responsibility for any inaccuracies in this document. Barracuda Networks Inc. reserves the right to change, modify, transfer, or otherwise revise this publication without notice.