

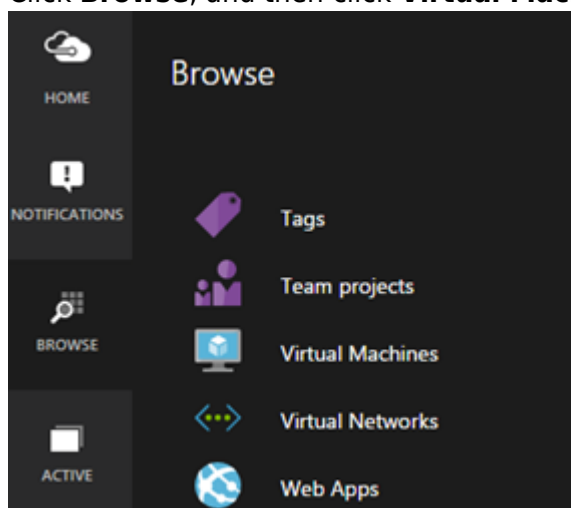
## How to Add Additional Storage to your Azure Deployment

<https://campus.barracuda.com/doc/44436934/>




Barracuda Message Archiver on Azure is no longer available for purchase; Barracuda Message Archiver virtual machines already deployed on Azure will continue to be supported.

Virtual machines (VMs) deployed through Azure Gallery prior to mid February, 2015 do not support Disk Expansion. If you deployed prior to this time period and want to expand the disk, you must re-deploy the VM using the latest VM image available in Azure Gallery.

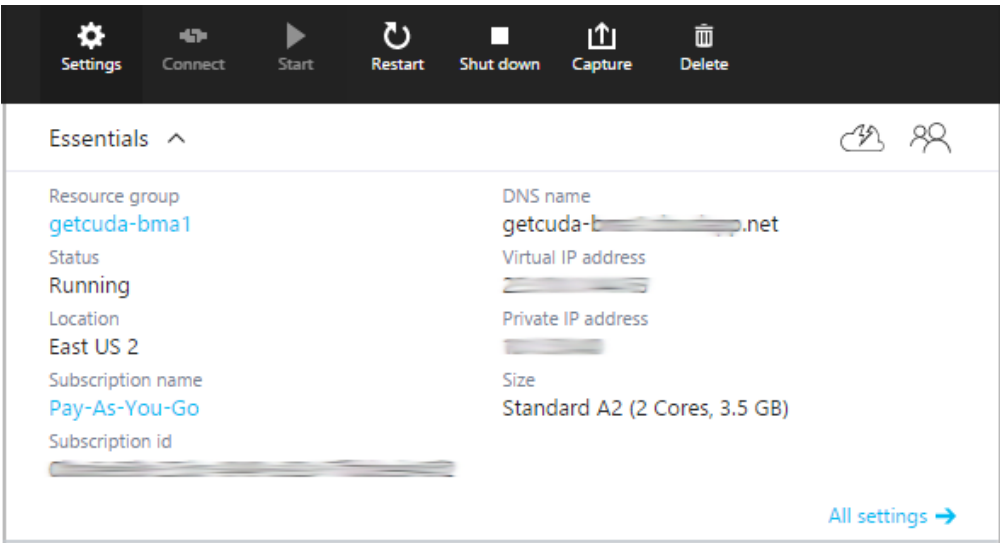
1. Log in to the [Microsoft Azure Portal](#).
2. Click **Browse**, and then click **Virtual Machines**:



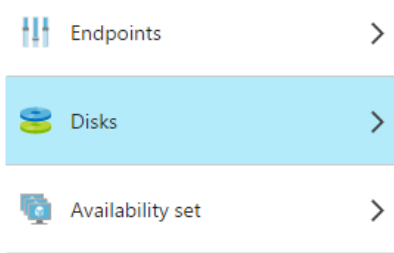
3. Click on the Instance to which to add storage:

NAME	STATUS	LOCATION
 getcuda-ao1	Running	East US 2
 getcuda-bma1	Running	East US 2
 getcuda-client1	Running	East US 2

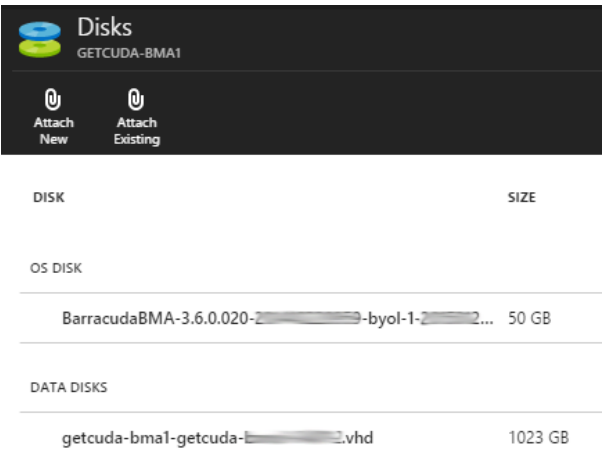
4. At the top of the pane, click **Settings**:



5. Click **Disks**:



6. Click **Attach New**:



7. Enter the disk size in 1023 GB increments; note that Azure virtual machine disks have a limit of 1023 GB. Add additional disks up to the size limit of your license:

Level 2	Level 5	Level 6
1 TB	3 TB	7 TB
1 additional disk	3 additional disks	7 additional disks

8. Set **Host Caching** to **None**:

Disk File Name  
 ✓

Size (GB)

Host Caching

9.

If your deployment requires more than 1023GB, attach additional disks.

10. Click **Storage Container**, and then select a Storage Account and Container:

<b>STORAGE CONTAINER</b> vhds >	<b>CHOOSE STORAGE ACCOUNT</b> [Account Name] >
Disk File Name <input type="text" value="getcuda-bma1-2-...vhd"/> ✓	<b>CHOOSE CONTAINER</b> vhds 🔒

11. Click **OK**:

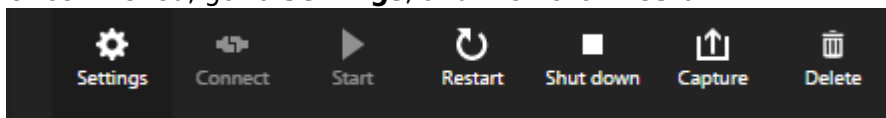
**STORAGE CONTAINER**  
vhds >

Disk File Name  
 ✓

Size (GB)

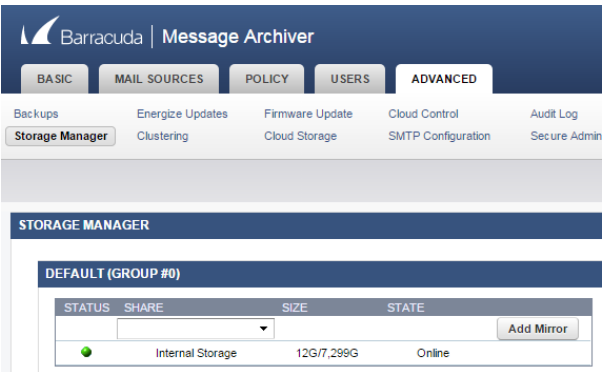
Host Caching

12. Once finished, go to **Settings**, and then click **Restart**:



During the reboot process, the Barracuda Message Archiver provisions the additional storage. This can take some time depending on the region where your virtual machine is located and the amount of provisioned storage.

13. Once the Barracuda Message Archiver is back online, log in to the Barracuda Message Archiver web interface, and go to the **ADVANCED > Storage Manager** page to verify disk storage:



## Figures

1. browse.png
2. new\_storage.png
3. settings.png
4. click\_disks.png
5. attach\_new.png
6. host\_caching.png
7. storage\_container.png
8. click\_ok.png
9. click\_restart.png
10. storage\_mgr.png

© Barracuda Networks Inc., 2024 The information contained within this document is confidential and proprietary to Barracuda Networks Inc. No portion of this document may be copied, distributed, publicized or used for other than internal documentary purposes without the written consent of an official representative of Barracuda Networks Inc. All specifications are subject to change without notice. Barracuda Networks Inc. assumes no responsibility for any inaccuracies in this document. Barracuda Networks Inc. reserves the right to change, modify, transfer, or otherwise revise this publication without notice.