
How to Install ArchiveOne Enterprise Compliance

<https://campus.barracuda.com/doc/46205936/>

This article refers to Barracuda ArchiveOne Enterprise versions 6.0 and higher.

Step 1. Review the Installation Prerequisites

Before installing ArchiveOne Enterprise (Compliance), review the installation prerequisites in the article [ArchiveOne for Exchange - Prerequisites](#).

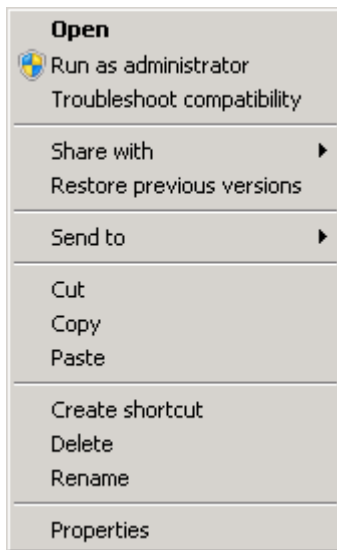
Step 2. Run the ArchiveOne for Exchange Deployment Analyzer

To ensure the Archive server meets the system requirements, you must complete the steps in the article [Run the ArchiveOne for Exchange Deployment Analyzer](#) and review the reports for any warnings or errors. The deployment analyzer ensures that the environment and server are correctly configured before installation and allows you to choose whether to install SQL Express.

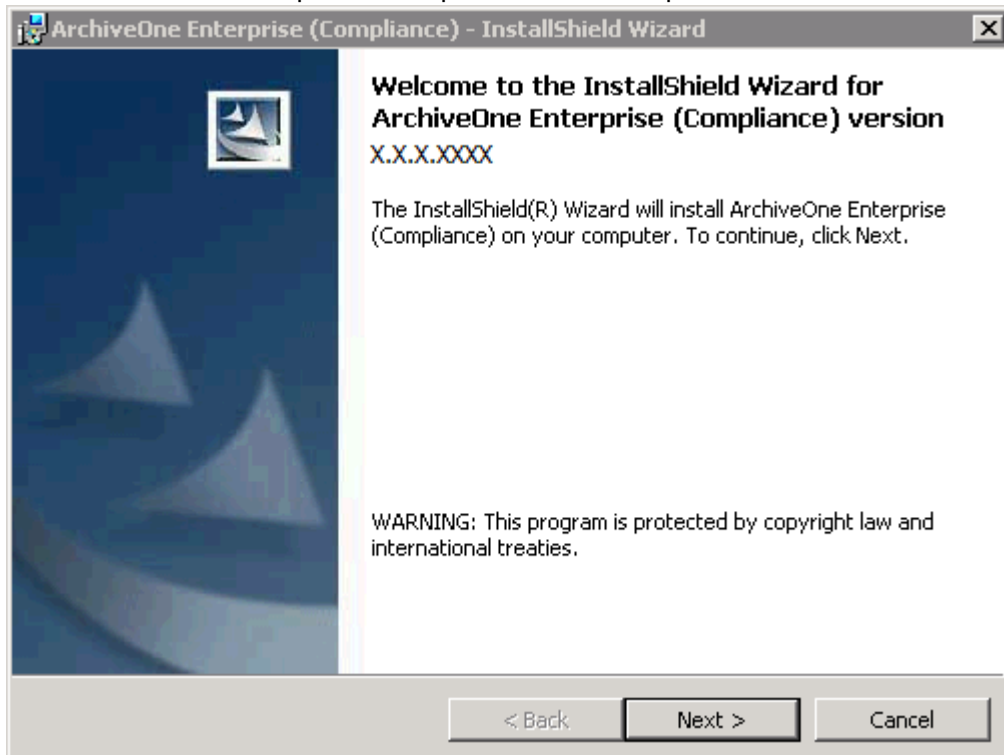
Step 3. Install ArchiveOne Enterprise Compliance

Use the following steps to install ArchiveOne Enterprise (Compliance):

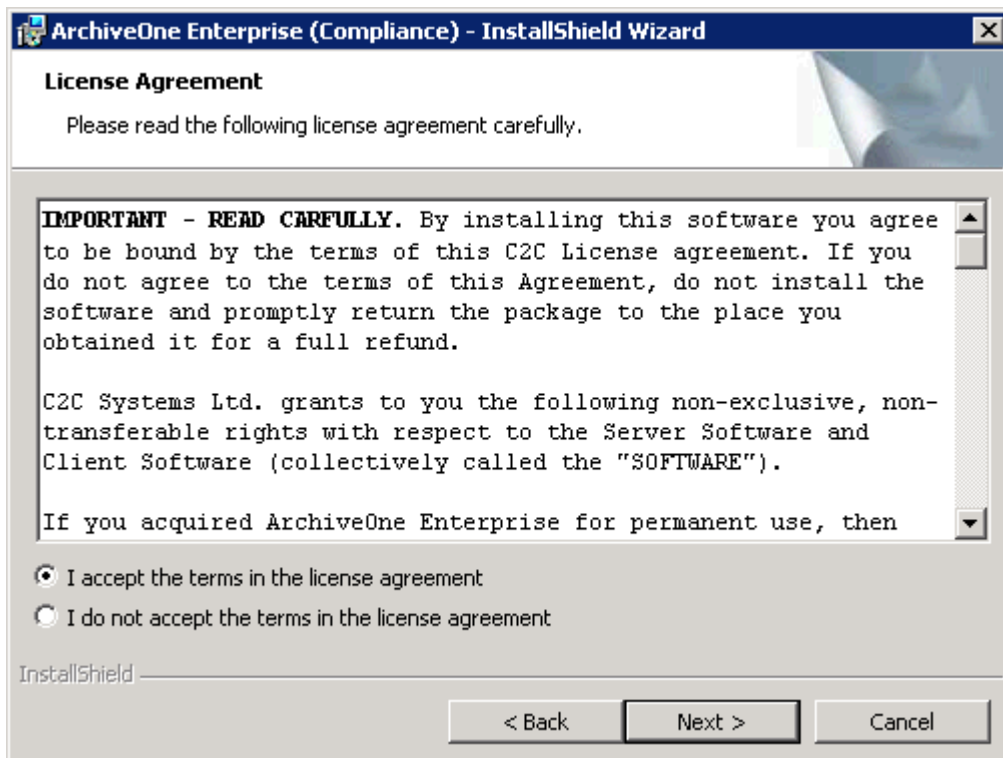
1. Right-click **ArchiveOne Compliance Unicode Setup Enterprise.X.X.X.XXXX.exe**, and click **Run as administrator**:



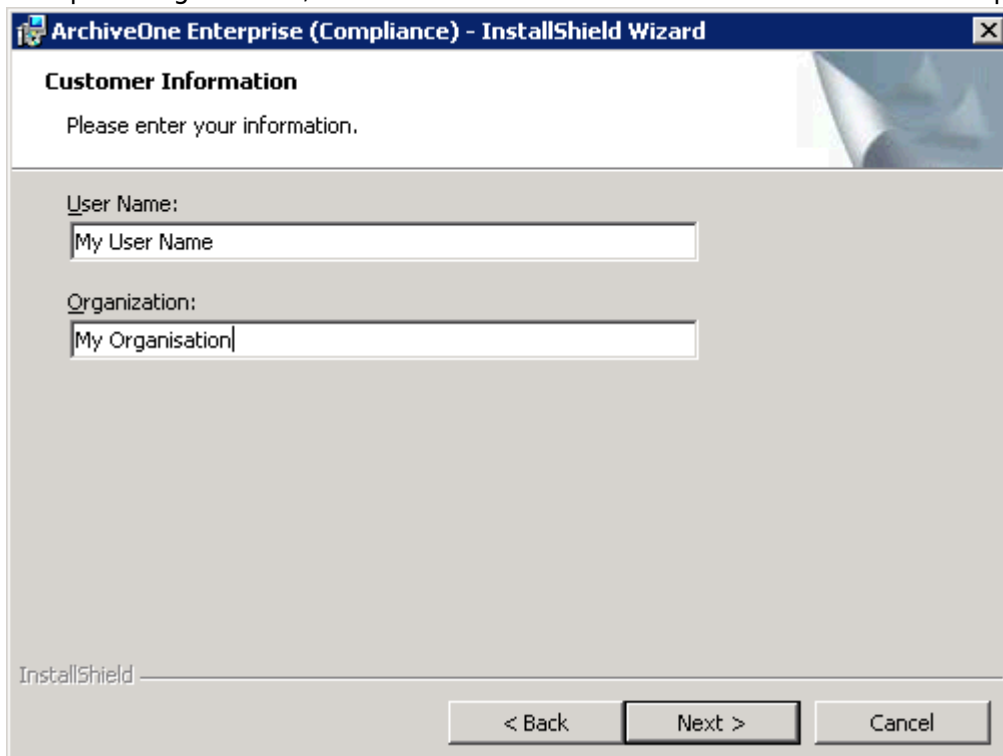
2. The ArchiveOne Enterprise (Compliance) wizard opens:



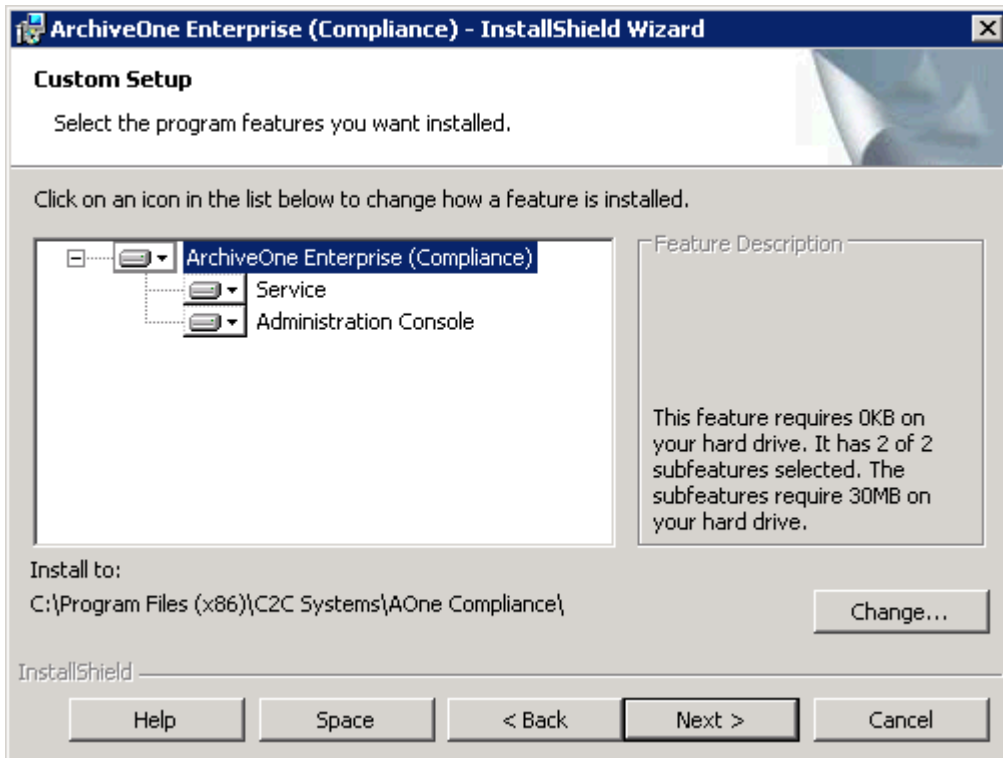
3. Click **Next**. In the **License Agreement** page, review the license terms:



4. Accept the agreement, and then click **Next**. The **Customer Information** page displays:



5. Enter your **User Name** and **Organization**, and then click **Next**. The **Custom Setup** page displays:

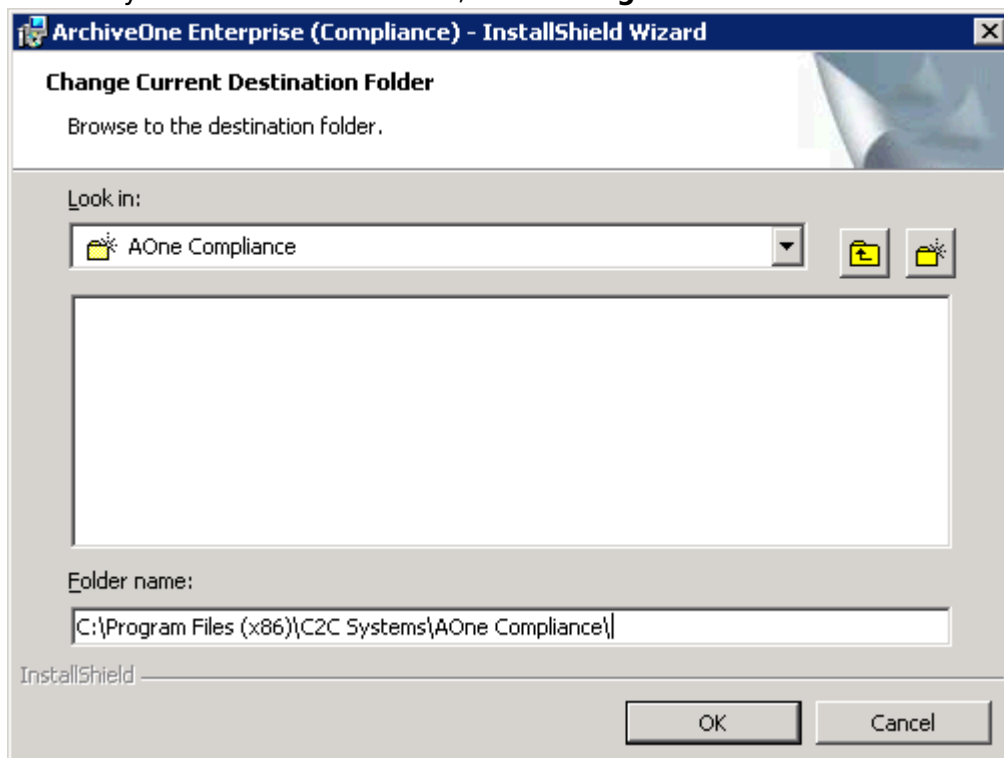


6. Select the required components for installation; by default all components are installed.

Service is only installed on the Archive server and cannot be installed on any other machine, and the **Administration Console** installs the ArchiveOne administration console on the Archive server and, if required, it can be installed on additional machines.

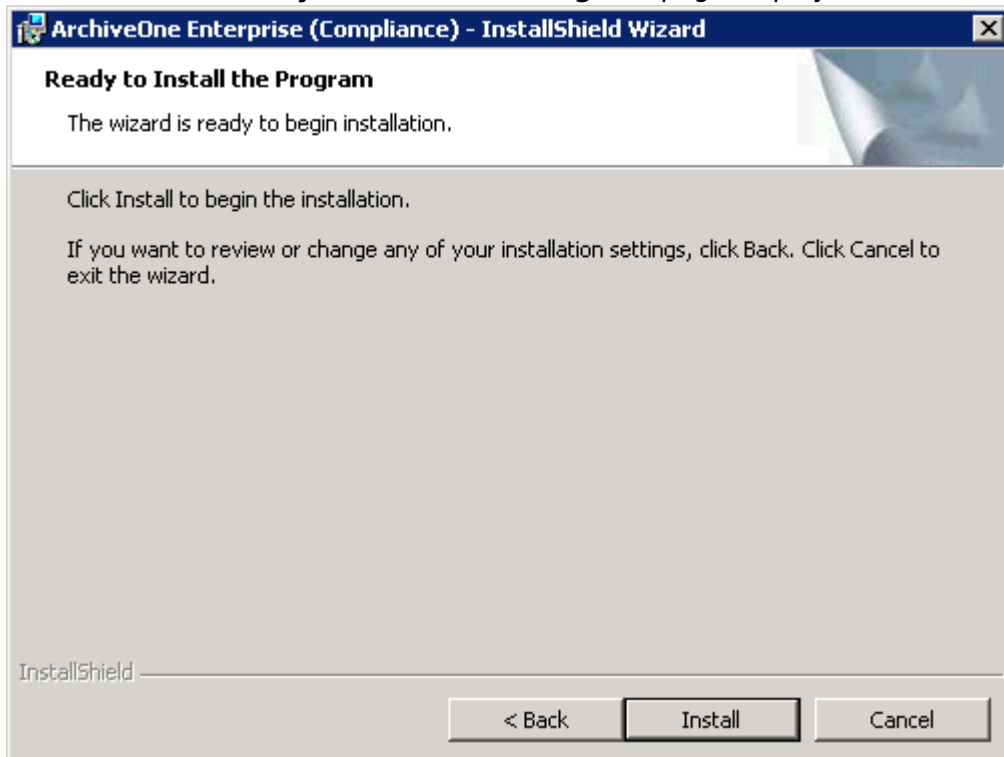
7. The default installation location is **C:\Program Files (x86)\C2C Systems\AOne Compliance**.

1. To modify the installation location, click **Change** and select the new location:



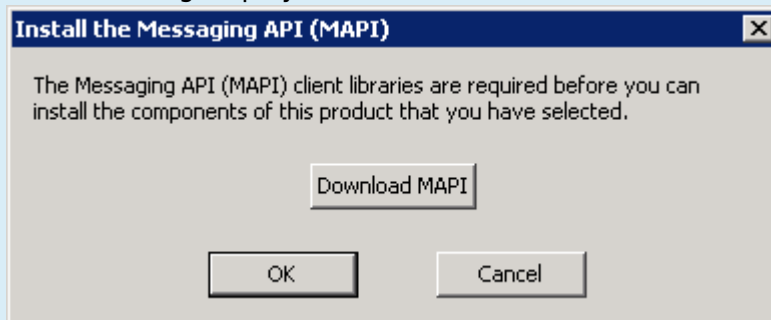
2. Click **OK**.

8. Click **Next**. The **Ready to Install the Program** page displays:

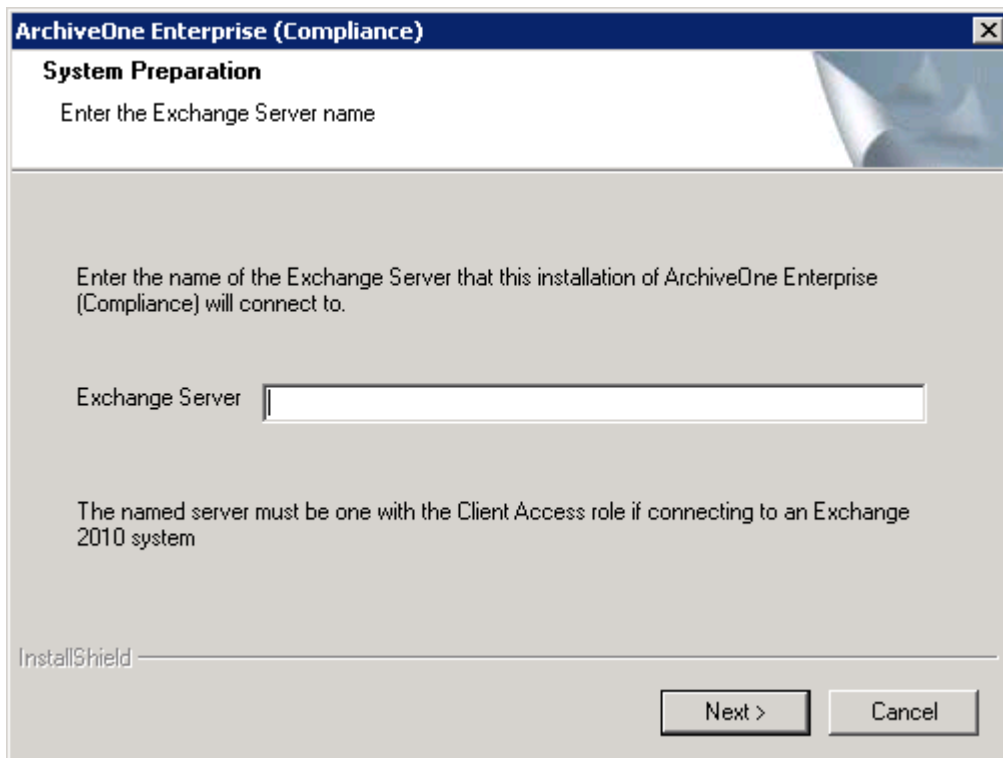


9. Click **Install** to begin the installation.

If you do not have the latest version of the MAPI CDO, the **Install the Messaging API (MAPI)** dialog displays. Click **Download MAPI** to download and install the latest version:

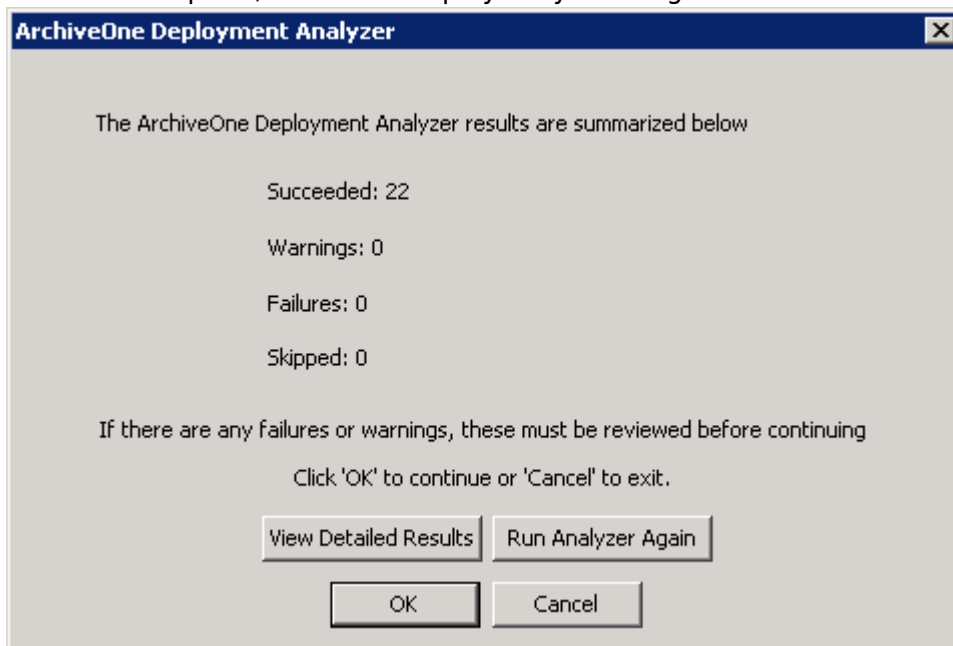


10. You are prompted for the Exchange server:



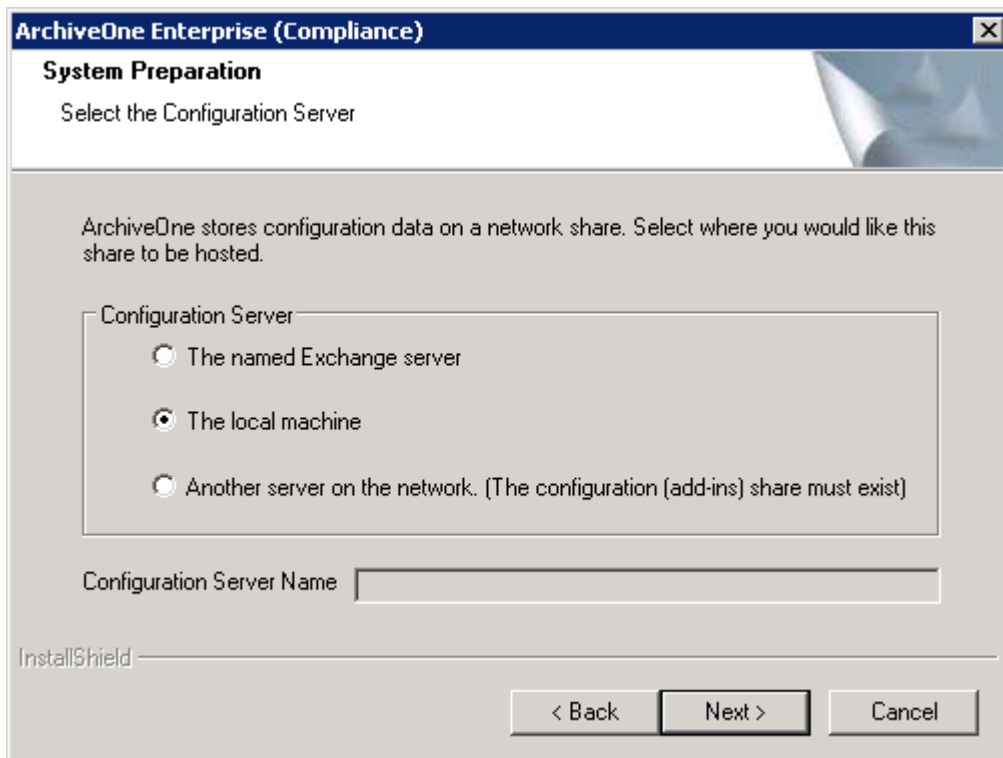
For Exchange 2010 environments, this must be a server with the CAS role or the name of the CAS Array.

11. Enter the NETBIOS name of the server, for example, EXCHANGE01, and then click **Next**.
12. The ArchiveOne Deployment Analyzer runs a series of tests against your environment. Once the tests are complete, a window displays any warnings and failures:



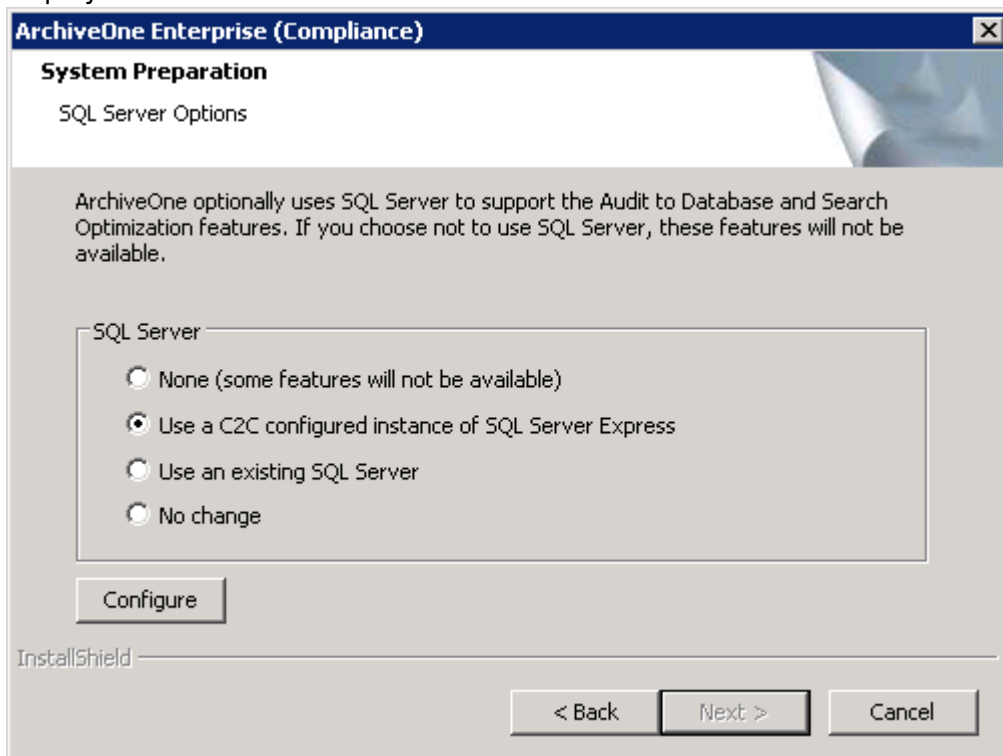
If there are any failures or warnings, click **View Detailed Results** before continuing. Click **Run Analyzer Again** once the failures and warnings are resolved.

13. Once all failed tests are resolved, click **OK**. You are prompted to specify the location of the Configuration server:



This setting determines where the configuration data is stored in the shared folder **Add-ins**. The share is created for the first time the service starts after installation. This can be any server, but is typically **The local machine**.

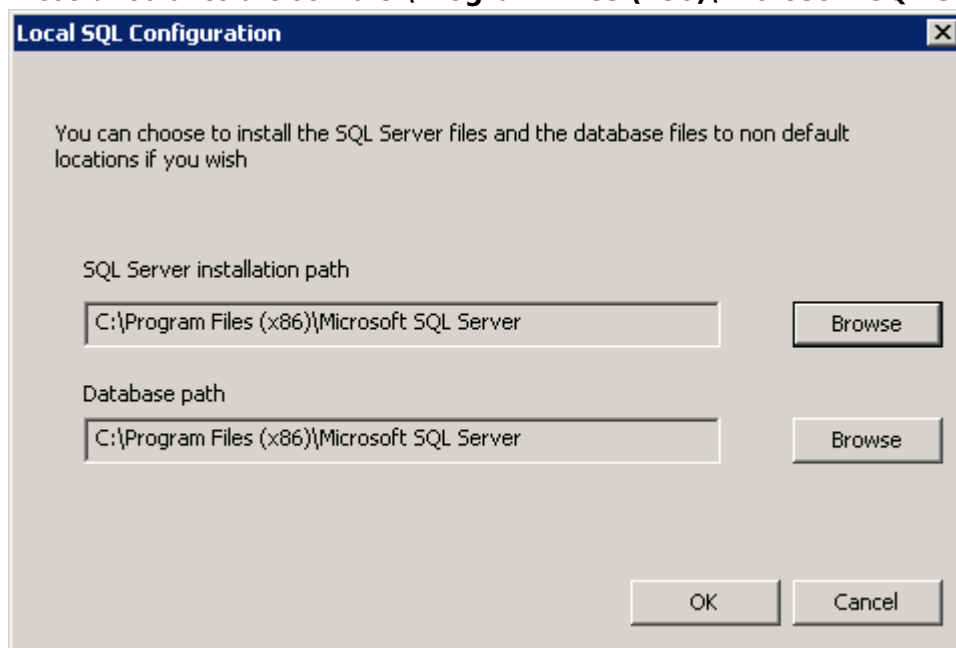
14. Select the **Configuration Server**, and then click **Next**. The **System Preparation** page displays:



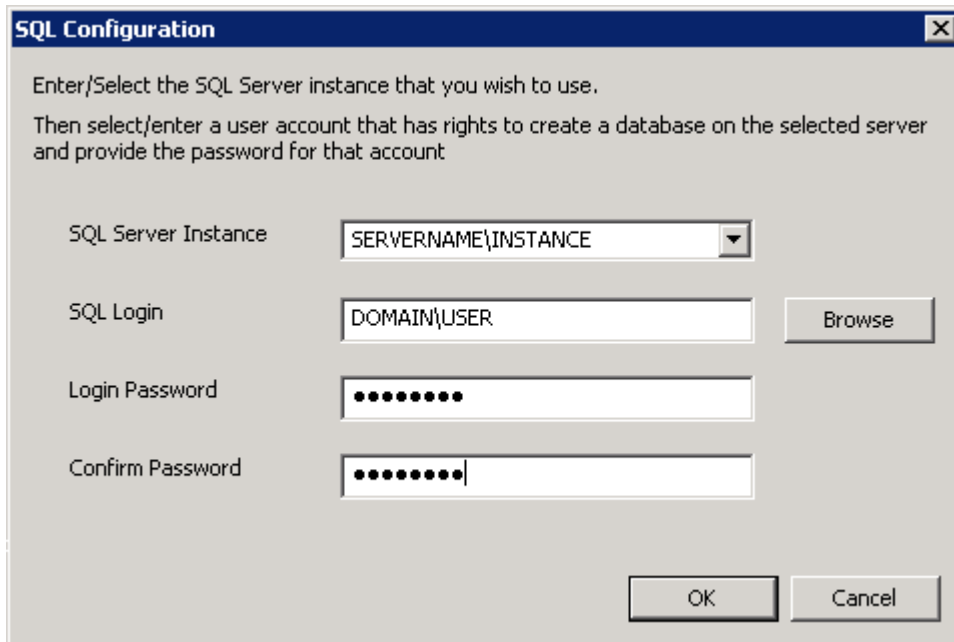
15. Select the desired SQL server option. This provides the search optimization and auditing

features:

1. **None** - Configures ArchiveOne to not use SQL server. Any features that require a SQL database will be unavailable.
2. **Use a C2C configured instance of SQL Server Express** - Allows you to use the previously installed SQL Server Express 2008 R2 instance **C2CARCHIVEONE** installed when the [deployment analyzer](#) was run:
 1. Click **Configure** to select the installation directory and database path. By default these directories are set to **C:\Program Files (x86)\Microsoft SQL Server**



2. Click **OK** to close the configuration and save changes.
3. **Use an existing SQL Server** - Configure the connection for an existing SQL server and instance.
 1. Click **Configure** to enter the SQL instance details. Enter the Sql Server Instance in the form **SERVERNAME\INSTANCE** where **SERVERNAME** is the name of the SQL server and **INSTANCE** is the name of the SQL instance if there are multiple instances on the named SQL server.
 2. Enter the Active Directory (AD) domain account as the **SQL Login**; this account must have sufficient permissions to administrate the named SQL instance. Click **Browse** to select the user account from AD.
 3. Enter the password associated with the account in the **Login Password/Confirm Password** fields.



SQL Configuration

Enter/Select the SQL Server instance that you wish to use.
Then select/enter a user account that has rights to create a database on the selected server and provide the password for that account

SQL Server Instance: SERVERNAME\INSTANCE

SQL Login: DOMAIN\USER

Login Password: [masked]

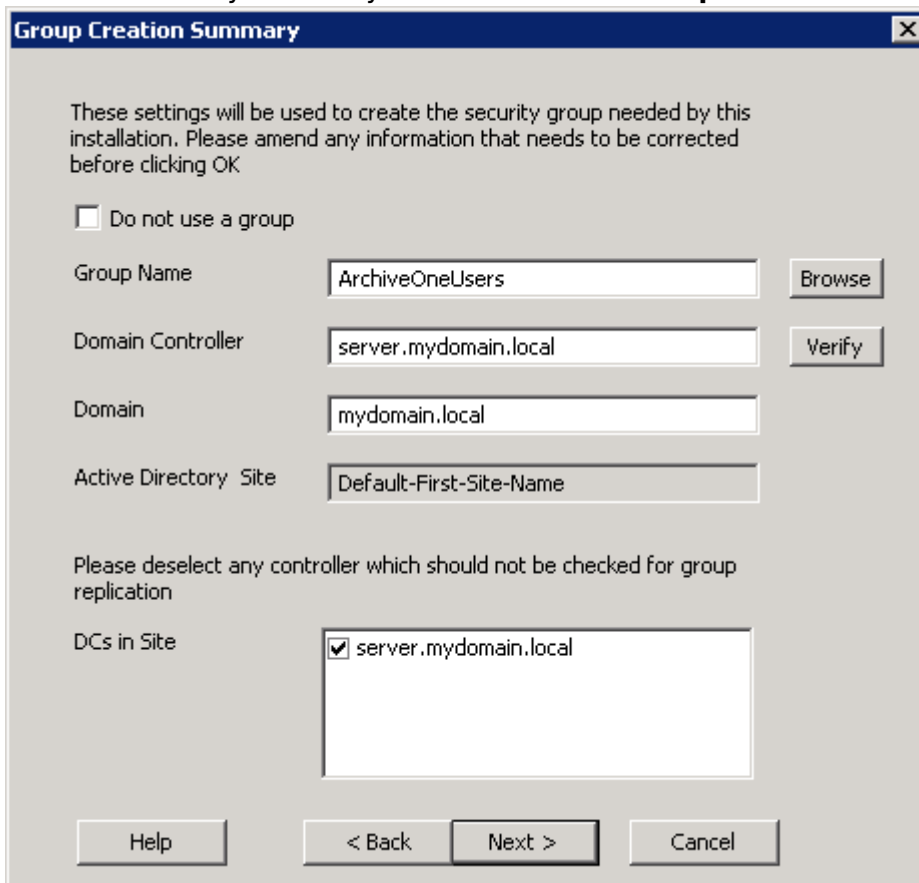
Confirm Password: [masked]

4. Click **OK** to close the configuration and save changes.

4. **No change** - Use the existing SQL configuration as defined in the Add-ins share on the specified Configuration server.

Use this option if you are reinstalling the software and wish to maintain the existing configuration

16. Click **Next** once you make your selection. The **Group Creation Summary** displays:



Group Creation Summary

These settings will be used to create the security group needed by this installation. Please amend any information that needs to be corrected before clicking OK

Do not use a group

Group Name: ArchiveOneUsers

Domain Controller: server.mydomain.local

Domain: mydomain.local

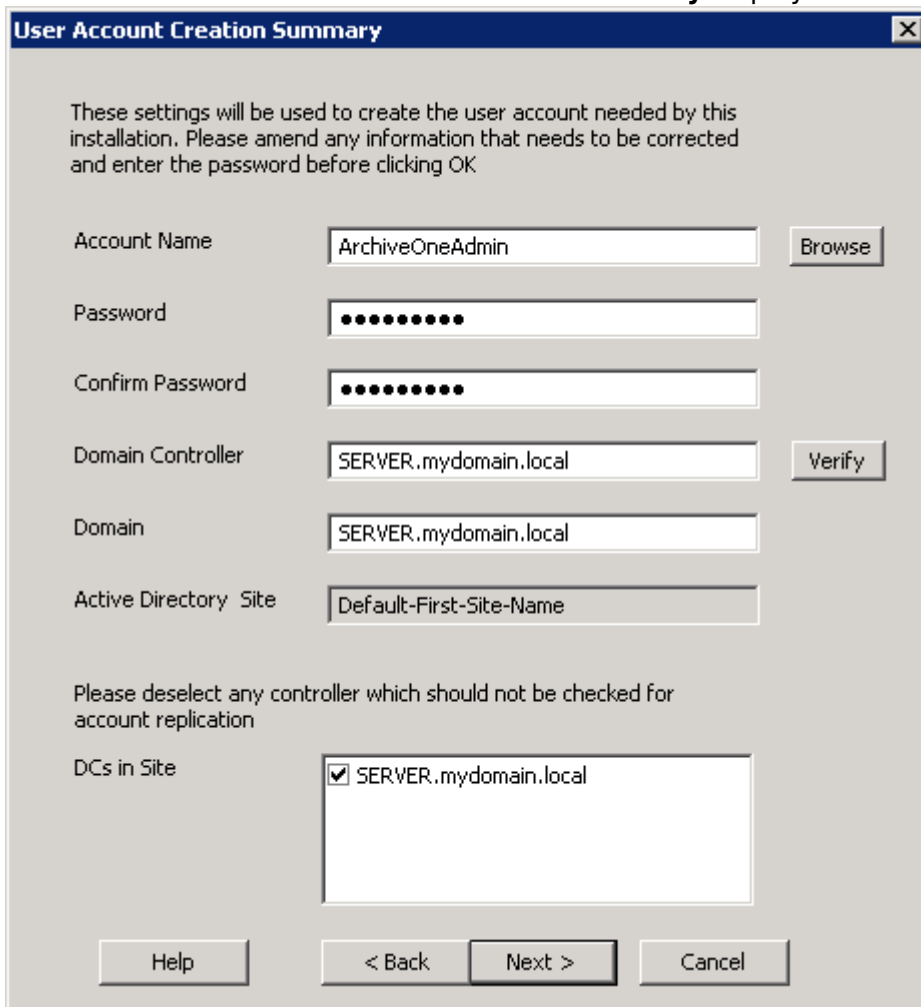
Active Directory Site: Default-First-Site-Name

Please deselect any controller which should not be checked for group replication

DCs in Site: server.mydomain.local

Members of the security group you name here are allowed to access the ArchiveOne Admin console. By default the group is named **ArchiveOneUsers**.

1. If you want to use a different security group, click **Browse** to select another security group in AD, or type the new security group name in the **Group Name** field to direct the installer to create the new security group.
 2. Click **Verify** to confirm the named **Domain Controller**.
 3. Verify that the DCs listed in the **DCs in Site** pane are online and available.
17. Click **Next**. The **User Account Creation Summary** displays:



User Account Creation Summary

These settings will be used to create the user account needed by this installation. Please amend any information that needs to be corrected and enter the password before clicking OK

Account Name:

Password:

Confirm Password:

Domain Controller:

Domain:

Active Directory Site:

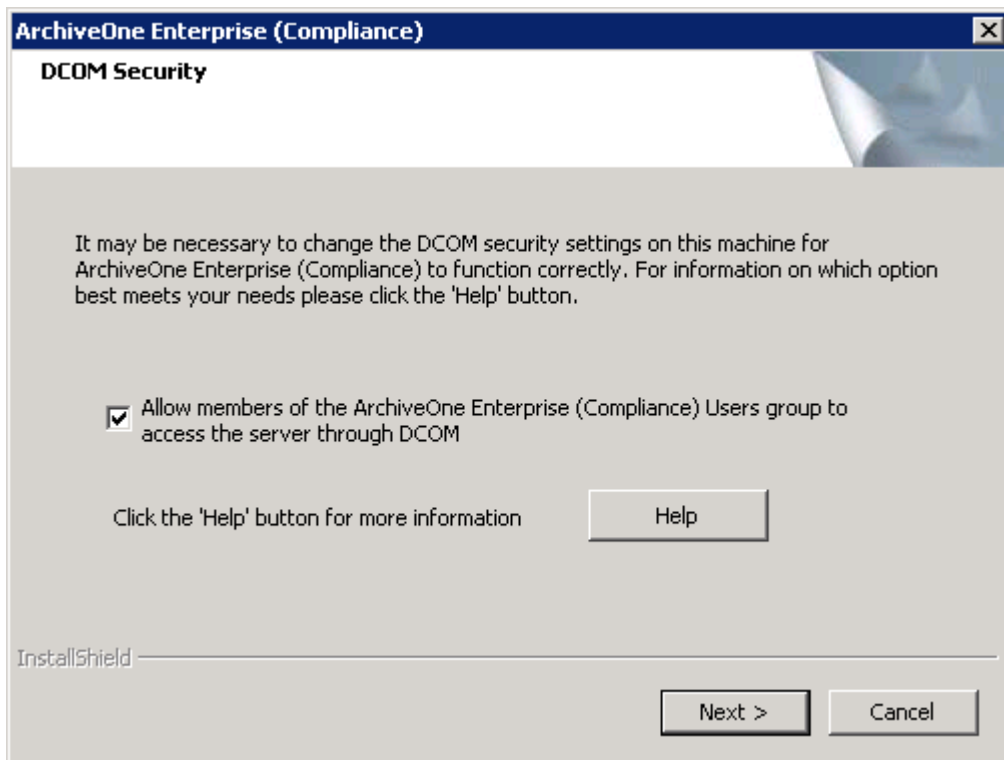
Please deselect any controller which should not be checked for account replication

DCs in Site: SERVER.mydomain.local

Buttons:

By default the user is named **ArchiveOneAdmin**.

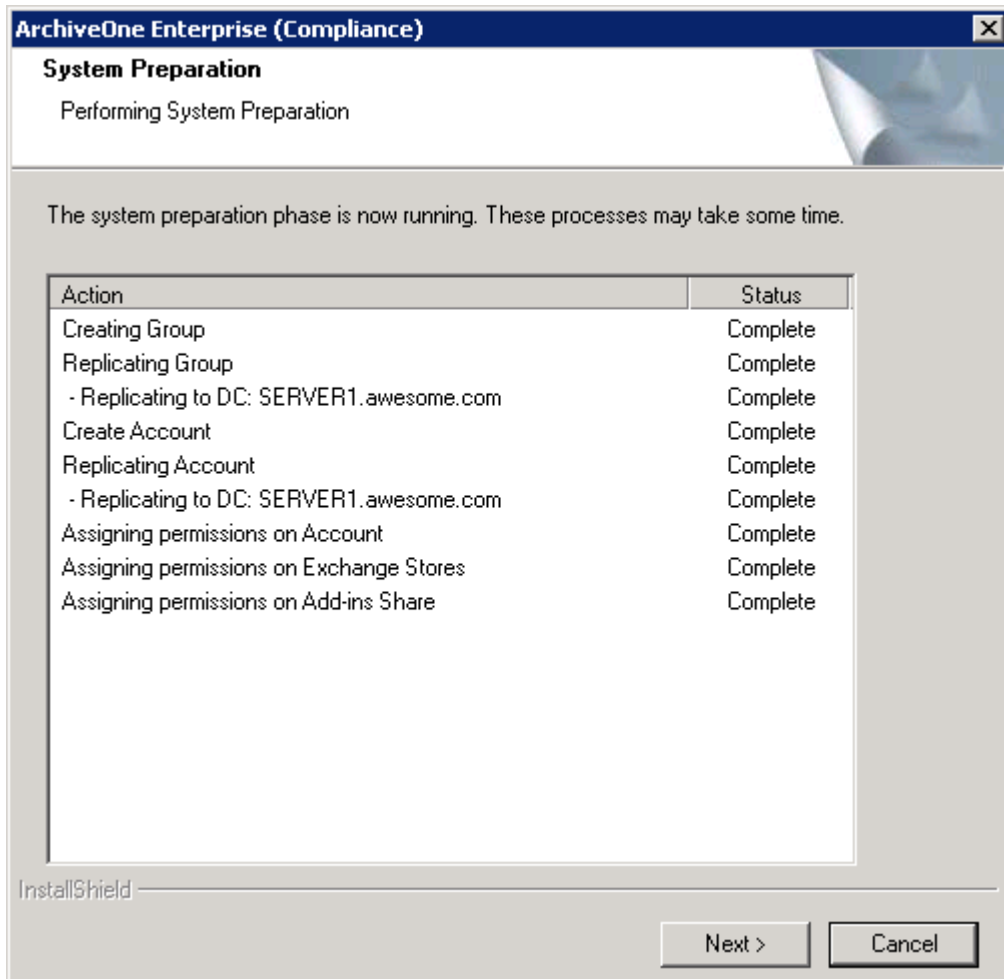
1. To use a different account, click **Browse** to select another user in AD, or type a new username in the **Account Name** field to have the installer create the user account, and enter the password for the named user account in the **Password/Confirm Password** fields.
 2. Click **Verify** to confirm the named **Domain Controller**.
 3. Verify that the DCs listed in the **DCs in Site** pane are online and available.
18. Click **Next**. **DCOM Security** displays:



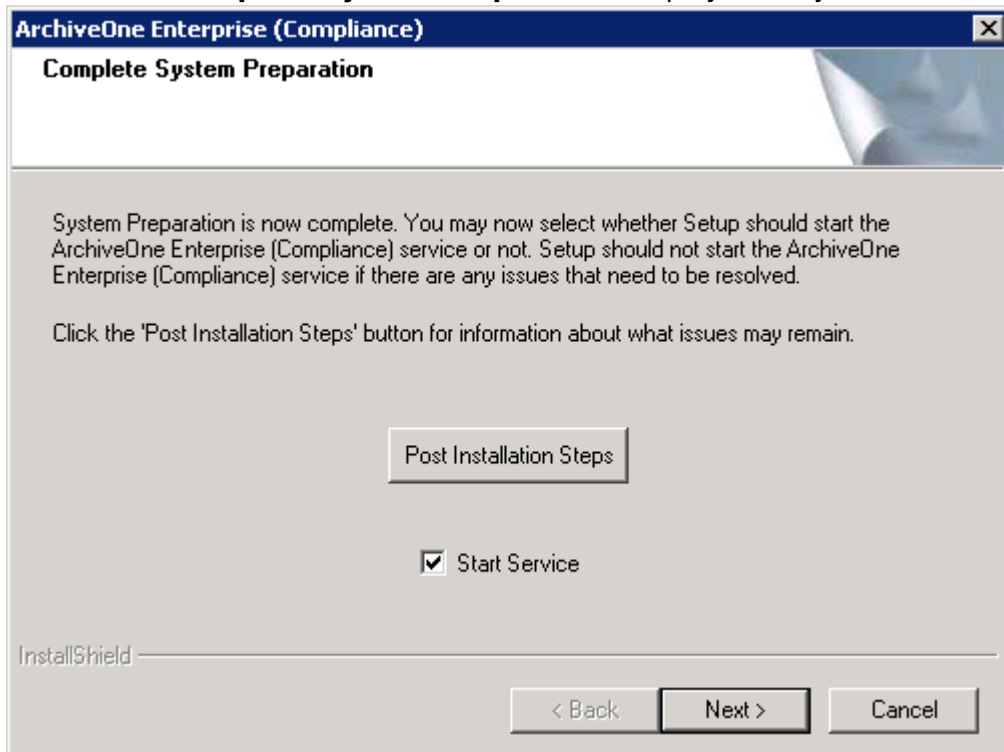
19. Select **Allow members of the ArchiveOne Enterprise (Compliance) Users group to access the server through DCOM**.

Allow members of the ArchiveOne Enterprise (Compliance) Users group to access the server through DCOM is recommended. Click **Help** for information on other options.

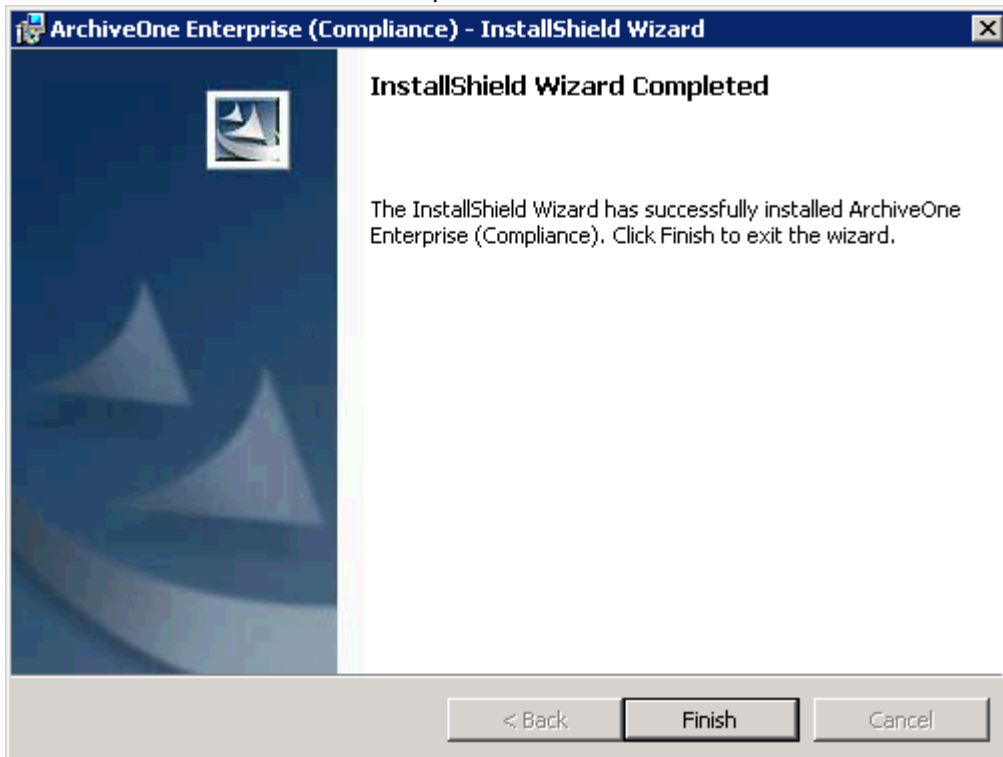
20. Click **Next**. The installer performs system preparation:



21. Click **Next** . **Complete System Preparation** displays. Verify **Start Service** is selected:



22. Click **Next**. The installation completes:



23. Click **Finish**. The installation is complete. You can now [configure ArchiveOne Enterprise \(Compliance\)](#).

Figures

1. install01.png
2. install02.png
3. install03.png
4. install04.png
5. install05.png
6. install06.png
7. install07.png
8. install08.png
9. install09.png
10. install10.png
11. install11.png
12. install12.png
13. install14.png
14. install13.png
15. install15.png
16. install16.png
17. install17.png
18. install18.png
19. install20.png
20. install19.png

© Barracuda Networks Inc., 2019 The information contained within this document is confidential and proprietary to Barracuda Networks Inc. No portion of this document may be copied, distributed, publicized or used for other than internal documentary purposes without the written consent of an official representative of Barracuda Networks Inc. All specifications are subject to change without notice. Barracuda Networks Inc. assumes no responsibility for any inaccuracies in this document. Barracuda Networks Inc. reserves the right to change, modify, transfer, or otherwise revise this publication without notice.