

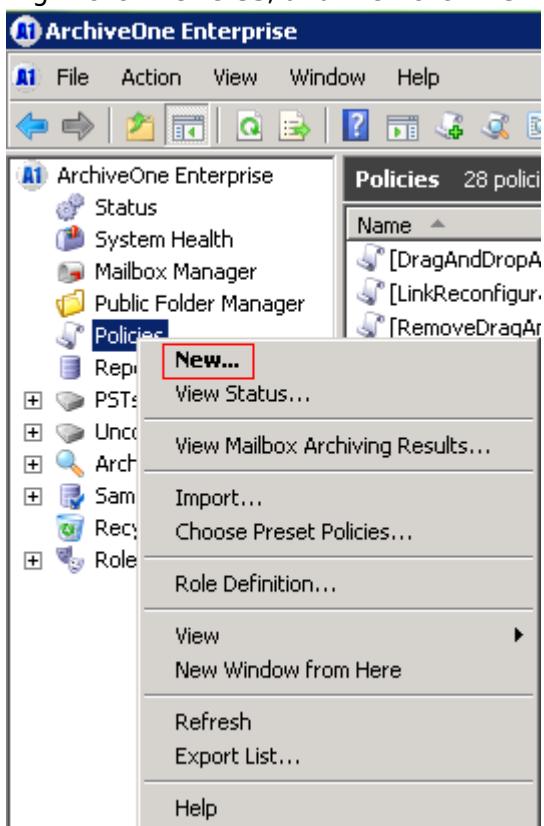
How to Create a Policy to Search Only Specified Folders

<https://campus.barracuda.com/doc/46206154/>

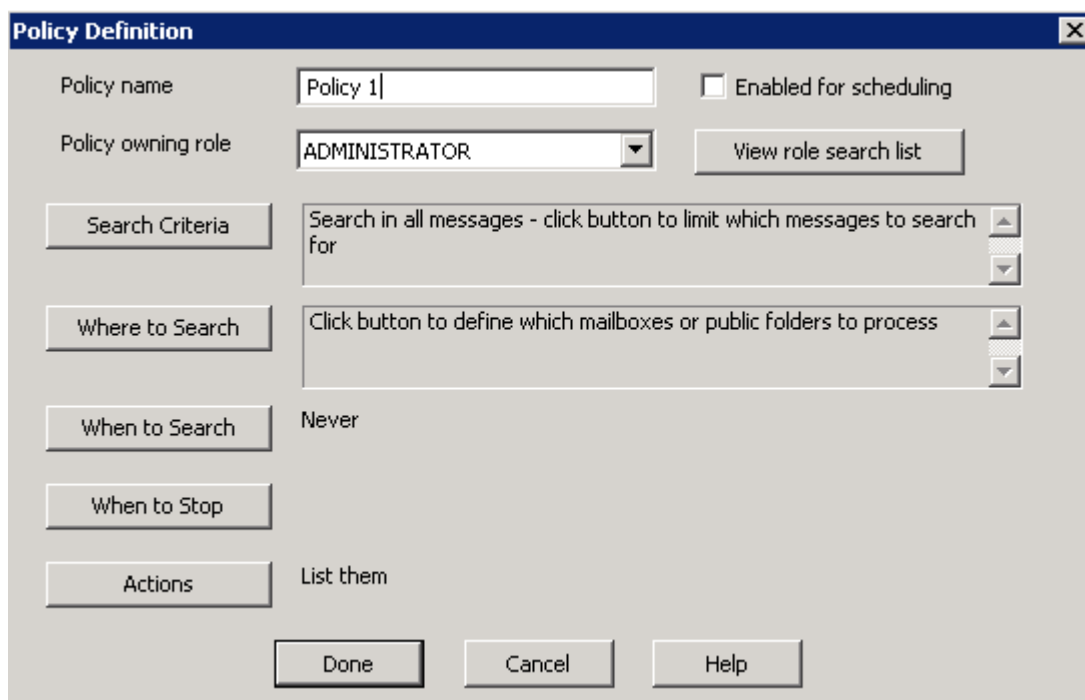
This article refers to the Barracuda ArchiveOne version 6.0 or higher.

This article describes the criteria to restrict a policy to examine a particular folder and its subfolders.

1. On the Archive Server, open the ArchiveOne Admin Console.
2. Right-click **Policies**, and then click **New**:



3. In the **Policy Definition** dialog box in the **Policy name** field, enter a name to identify the new policy:



Policy Definition

Policy name: Policy 1 ☐ Enabled for scheduling

Policy owning role: ADMINISTRATOR

Search Criteria Search in all messages - click button to limit which messages to search for

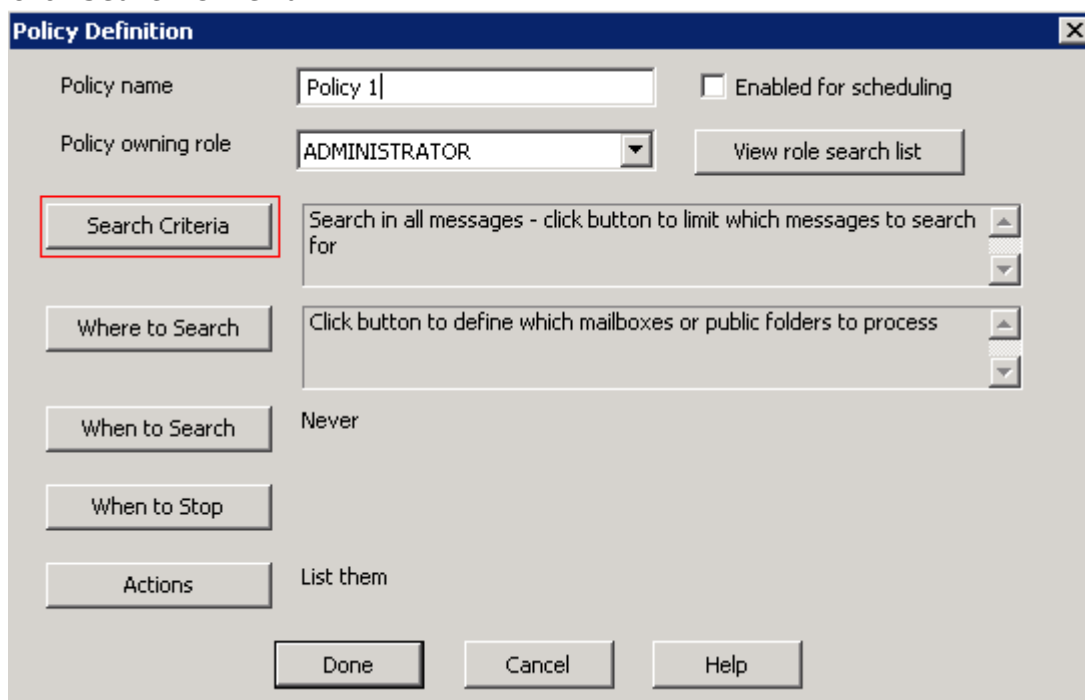
Where to Search Click button to define which mailboxes or public folders to process

When to Search Never

When to Stop

Actions List them

4. Click **Search Criteria**:



Policy Definition

Policy name: Policy 1 ☐ Enabled for scheduling

Policy owning role: ADMINISTRATOR

Search Criteria Search in all messages - click button to limit which messages to search for

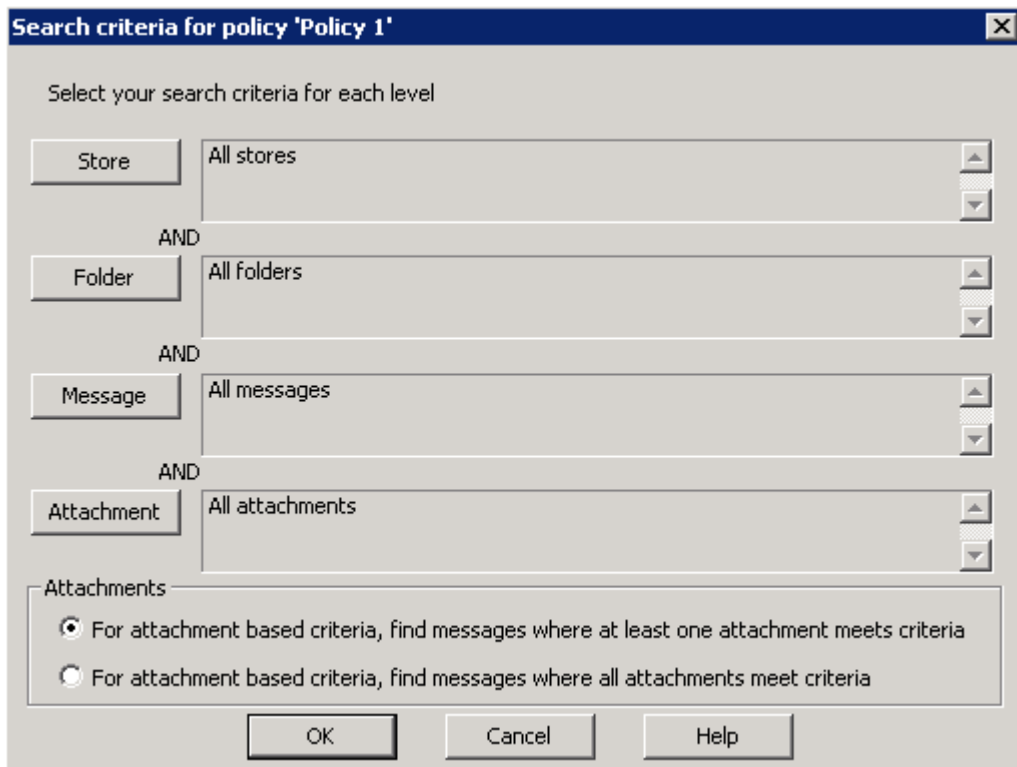
Where to Search Click button to define which mailboxes or public folders to process

When to Search Never

When to Stop

Actions List them

5. Click **Folder**:



6. In the **Property** section, click **Folder Path**.
7. Select the desired option in the **Conditions** section:
 - Select **contains** to match any folder paths containing the specified folder name at any level in the hierarchy, *or*
 - Select **starts with** to match only folder paths starting with the specified folder name.
8. In the **Value** field, type the folder name.
9. Click **Add** to set the criteria. Click **OK** to save your settings, and then click **OK** to return to the **Policy Definition** window.
10. Configure additional criteria for the policy as required.

Figures

1. new_policy.png
2. policy_def.png
3. click_search_criteria.png
4. search_criteria.png

© Barracuda Networks Inc., 2024 The information contained within this document is confidential and proprietary to Barracuda Networks Inc. No portion of this document may be copied, distributed, publicized or used for other than internal documentary purposes without the written consent of an official representative of Barracuda Networks Inc. All specifications are subject to change without notice. Barracuda Networks Inc. assumes no responsibility for any inaccuracies in this document. Barracuda Networks Inc. reserves the right to change, modify, transfer, or otherwise revise this publication without notice.