

How to View the Number of Mailboxes in Mailbox Manager

<https://campus.barracuda.com/doc/46206277/>

The Description Bar displays the number of mailboxes in Mailbox Manager. The Description Bar does not display by default:



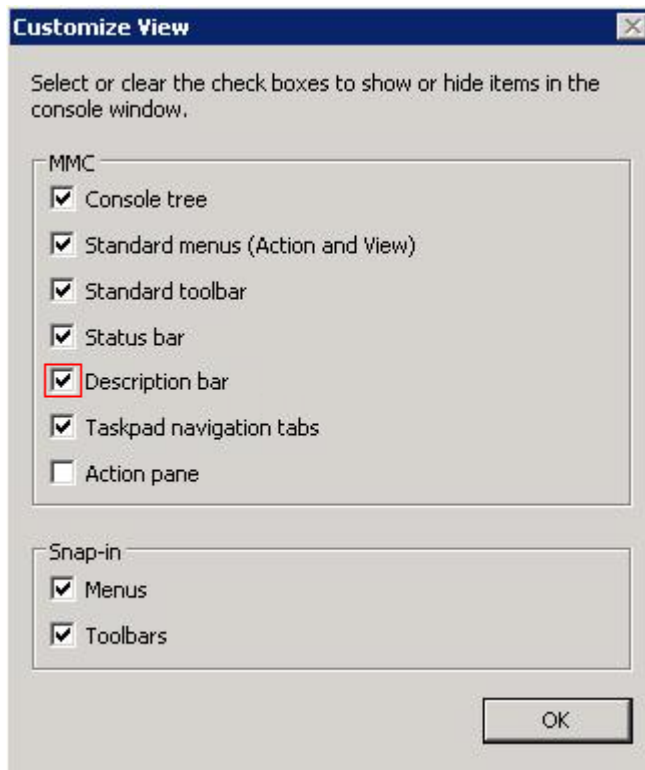
Mailbox name	Enabled for Pro...	List of Users That Are Allo...	Repository	Offline Archive	Offline Base Dir	Offline Local Dir	Search Folder C...
Aaron Flores	Enabled	Aaron Flores;	Repository 1	No			Enabled
Adam Allen	Enabled	Adam Allen;	Repository 1	Yes	{\SERVER5\AO...	(Local App. Dire...	Enabled
Aidan Sullivan	Enabled	Adam Allen; Aidan Sullivan;	Repository 1	No			Enabled
Alexander Thompson	Enabled	Alexander Thompson;	Repository 1	No			Enabled
Alfie Miller	Enabled	Alfie Miller;	Repository 1	No			Enabled
Archie Young	Enabled	Adam Allen; Archie Young;	Repository 1	No			Enabled
Ashton Wood	Enabled	Ashton Wood;	Repository 1	No			Enabled
Bailey Watson	Enabled	Bailey Watson;	Repository 1	No			Enabled
Ben Nguyen	Enabled	Ben Nguyen;	Repository 1	No			Enabled
Benjamin Jackson	Enabled	Benjamin Jackson;	Repository 1	No			Enabled
Billy Notbutler	Disabled	Adam Allen; Billy Notbutler;	Repository 1	No			Enabled
Blake Powell	Enabled	Blake Powell;	Repository 1	No			Enabled
Bradley Reyes	Enabled	Bradley Reyes;	Repository 1	No			Enabled
Brandon Howard	Enabled	Brandon Howard;	Repository 1	No			Enabled
Callum Robinson	Enabled	Callum Robinson;	Repository 1	No			Enabled
Cameron Carter	Enabled	Cameron Carter;	Repository 1	No			Enabled
Charles Morris	Enabled	Charles Morris;	Repository 1	No			Enabled
Christopher Ortiz	Enabled	Christopher Ortiz;	Repository 1	No			Enabled

Use the following steps to display the Description Bar:

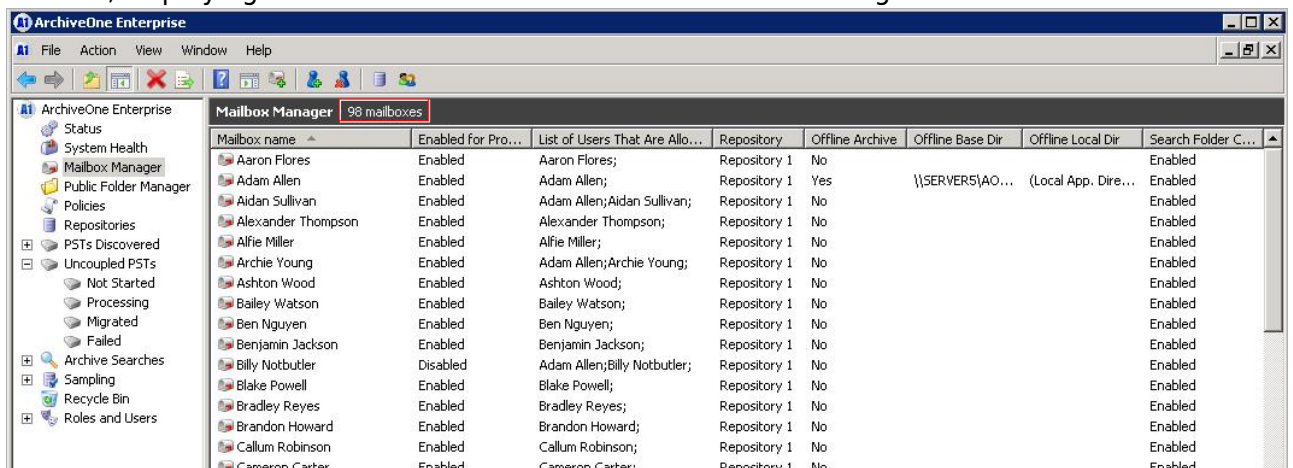
1. On the Archive Server, open the ArchiveOne Admin Console.
2. Click the **View** menu, and click **customize**:



3. In the **Customize View** dialog box, select **Description Bar**:



4. Click **OK**. The **Description Bar** displays across the top of the right-hand pane in the admin console, displaying the number of mailboxes in the Mailbox Manager:



Note that the Description Bar works for other nodes as well. For example, when enabled, the number of discovered PST files display in the [Coupled and Uncoupled PSTs Node](#), and the number of policies display in the [Policies node](#).

Figures

1. mm_01.png
2. mm_02.png
3. mm_03.png
4. mm_04.png

© Barracuda Networks Inc., 2024 The information contained within this document is confidential and proprietary to Barracuda Networks Inc. No portion of this document may be copied, distributed, publicized or used for other than internal documentary purposes without the written consent of an official representative of Barracuda Networks Inc. All specifications are subject to change without notice. Barracuda Networks Inc. assumes no responsibility for any inaccuracies in this document. Barracuda Networks Inc. reserves the right to change, modify, transfer, or otherwise revise this publication without notice.