

## How to Establish a VPN Connection Using Barracuda VPN Client for Linux

<https://campus.barracuda.com/doc/46206586/>

After installing and configuring the Barracuda VPN Client for Linux or the macOS command line , you can initiate a VPN connection with the settings from a configured VPN profile.

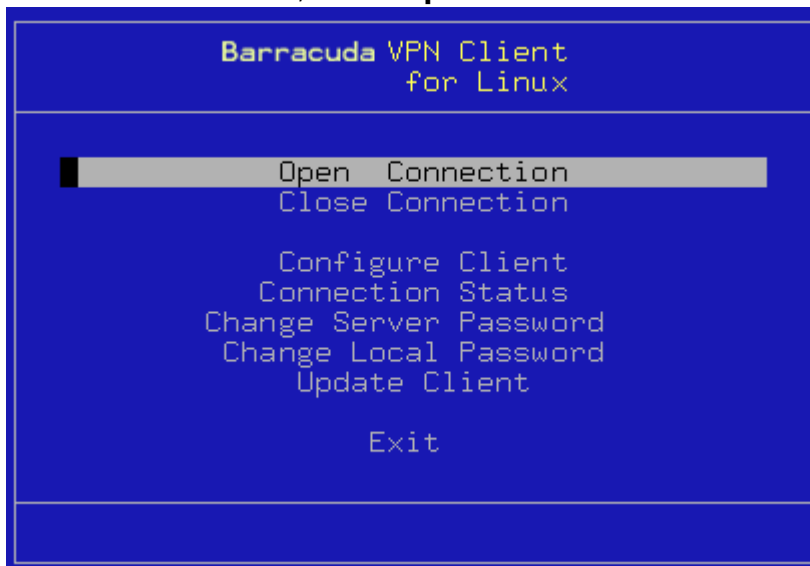
### Before You Begin

Create a VPN profile as described in [How to Configure the Barracuda VPN Client for Linux](#).

### Launch the VPN Connection

When you start the Barracuda VPN Client, choose options from the **Main Menu** to start and manage your VPN connections.

1. Start the Barracuda VPN Client from the command line. Enter: barracudavpn
2. From the **Main Menu**, select **Open Connection**.



3. Click **Exit** to exit the VPN client. Established connections are kept open.

**The Barracuda VPN Client** forks a background process that keeps running even if you exit the main client. This is needed to control the connection. The background process is not terminated until you close the connection.

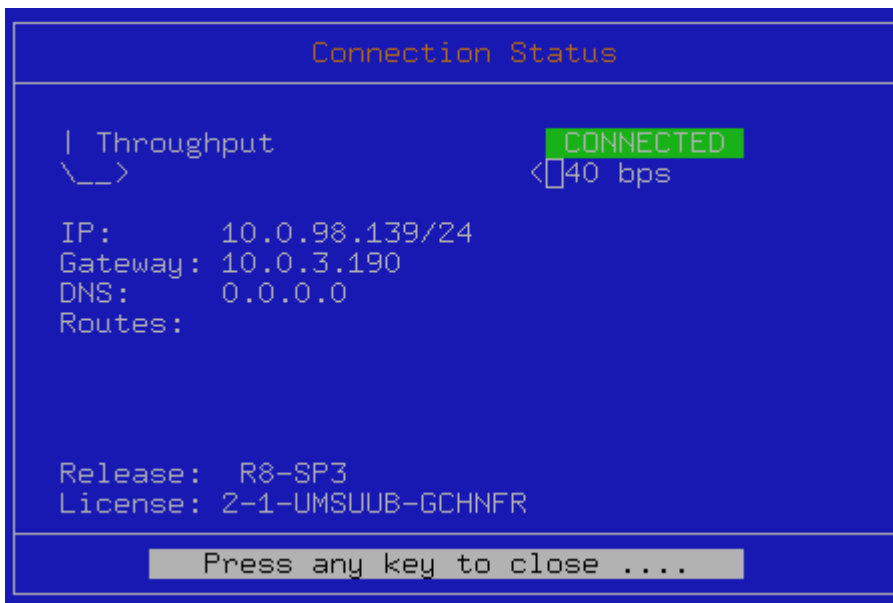
---

## Viewing the Connection Status

---

**Connection Status** - Displays information about your VPN connection, such as its throughput, IP address, routes, gateway, DNS, and license.

1. Start the Barracuda VPN Client from the command line. Enter: `barracudavpn`
2. From the **Main Menu**, select **Connection Status**.



```
Connection Status

| Throughput          CONNECTED
\__>                 < 40 bps

IP:      10.0.98.139/24
Gateway: 10.0.3.190
DNS:     0.0.0.0
Routes:

Release:  R8-SP3
License:  2-1-UMSUUB-GCHNFR

Press any key to close ....
```

---

## Terminate a VPN Connection

---

1. Start the Barracuda VPN Client from the command line. Enter: `barracudavpn`
2. From the **Main Menu**, select **Close Connection**.

---

## Using the Barracuda VPN Client via Command Line

---

At the command line, enter: `barracudavpn [options]`

You can specify any of the following command-line options:

- **-s --start** - Start the VPN tunnel.
- **-p --stop** - Stop the VPN tunnel.
- **-t --status** - Show the tunnel status.

- **-k --keypwd** - Password for the local key.
- **-l --login** - Server login (user, password authentication)
- **-c --config** - Path to the alternate barracudavpn.conf configuration file. It is not possible to rename this file.
- **-r --serverpwd** - Server password.
- **-V --version** - Show the VPN client version.
- **-v --verbose** - Show debug output.
- **-h --help** - Show this help output.

### Examples:

- Personal license authentication: `barracudavpn --start --keypwd <license-password>`
- X509 authentication: `barracudavpn --start --keypwd <cert/key-password>`
- X509 + user/password authentication: `barracudavpn --start --keypwd <cert/key-password> --login <login-name> --serverpwd <password for login name>`
- User/password authentication: `barracudavpn --start --login <login-name> --serverpwd <password for login name>`

## Figures

1. clientmain.png
2. status\_linux.png

© Barracuda Networks Inc., 2024 The information contained within this document is confidential and proprietary to Barracuda Networks Inc. No portion of this document may be copied, distributed, publicized or used for other than internal documentary purposes without the written consent of an official representative of Barracuda Networks Inc. All specifications are subject to change without notice. Barracuda Networks Inc. assumes no responsibility for any inaccuracies in this document. Barracuda Networks Inc. reserves the right to change, modify, transfer, or otherwise revise this publication without notice.