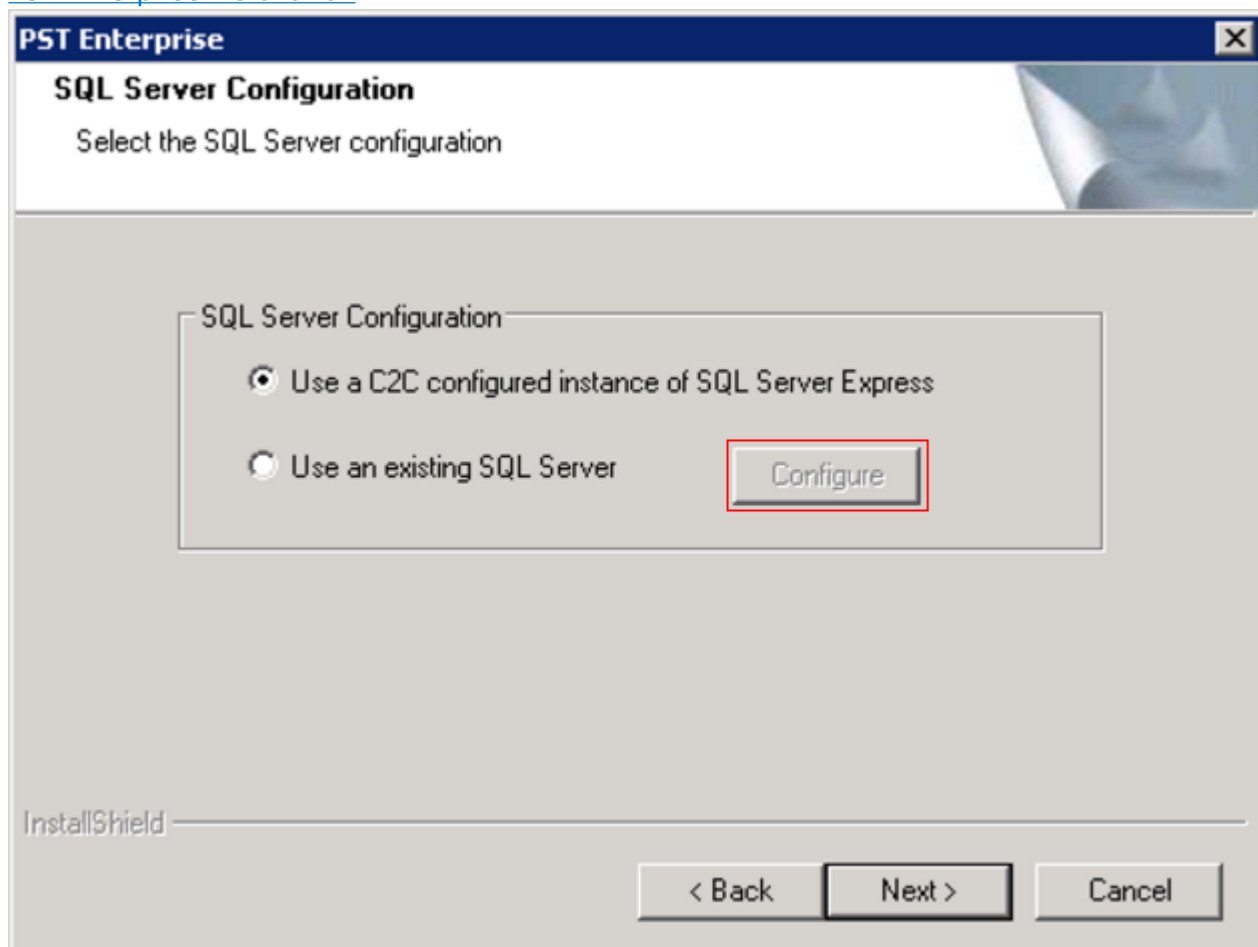


## Understanding Why SQL Server Configuration is Unavailable

<https://campus.barracuda.com/doc/46208571/>

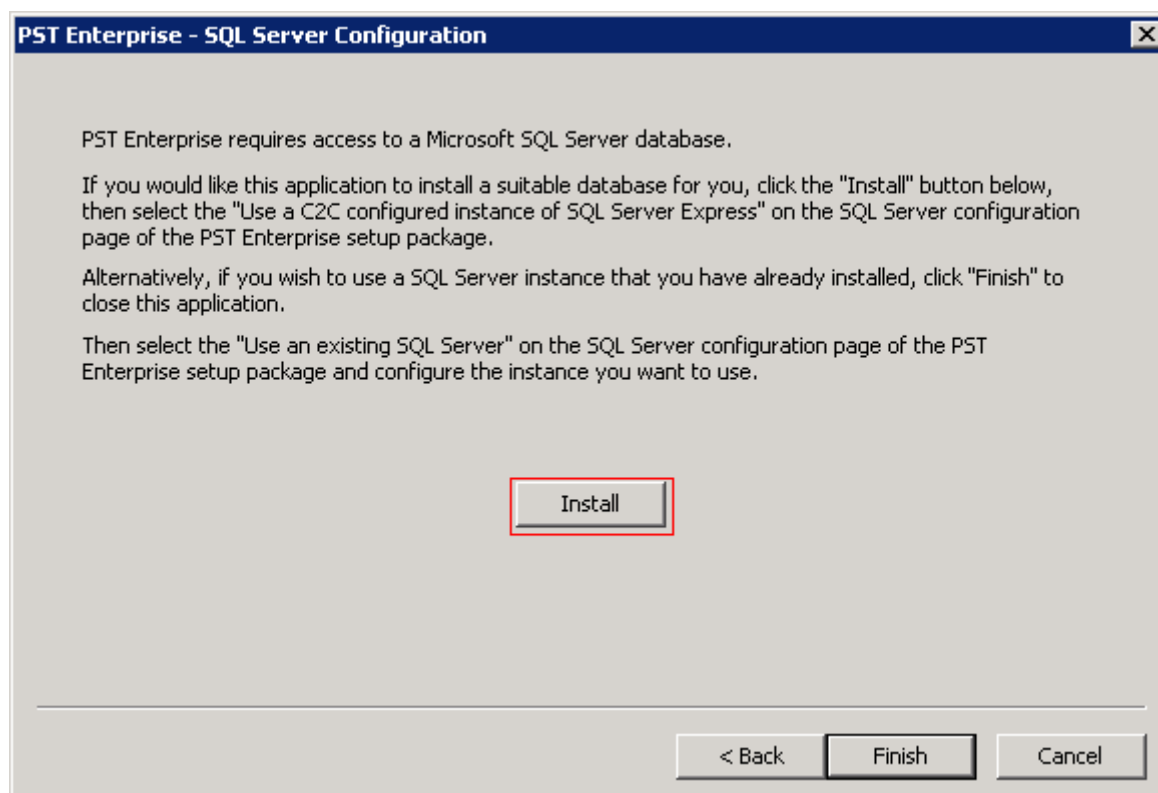
This article applies to PST Enterprise version 2.4 or higher.

If the **Configure** option in the **SQL Server Configuration** page is grayed out during the [Barracuda PST Enterprise installation](#):



It is likely that the PST Enterprise Pre-Installation package was not run and used to create the SQL Server Express instance.

To resolve this issue, click **Cancel** in the **SQL Server Configuration** page, and then run the [PST Enterprise Pre-Installation package](#), ensuring you click **Install** on the **SQL Server Configuration** page to automatically install and create the SQL Server Express instance:



## Figures

1. config\_sql\_server.png
2. config\_sql\_server02.png

© Barracuda Networks Inc., 2024 The information contained within this document is confidential and proprietary to Barracuda Networks Inc. No portion of this document may be copied, distributed, publicized or used for other than internal documentary purposes without the written consent of an official representative of Barracuda Networks Inc. All specifications are subject to change without notice. Barracuda Networks Inc. assumes no responsibility for any inaccuracies in this document. Barracuda Networks Inc. reserves the right to change, modify, transfer, or otherwise revise this publication without notice.