



Control Center Statistics

Statistics data from managed NextGen F-Series Firewalls is processed and maintained on the Barracuda NextGen Control Center. The CC Statistics Collector (dstatm) and CC Statistics Viewer (qstatm) services collect raw data from the firewall systems and process them according to the specified transfer settings. To view the statistics that are generated from this data, you must introduce the CC Statistics Collector (dstatm) and CC Statistics Viewer (qstatm) services on the box layer of the Control Center.

Configure Statistics Processing

In the Control Center, you can configure how statistics data from managed firewalls is processed and maintained. You can configure global, range-specific, or cluster-specific statistics settings. In the Cook settings, you can specify how *dstats* processes and maintains statistics for specific data types. Statistics Transfer settings specify which statistics data files are sent from a managed F-Series Firewall to the Control Center.

For more information, see [How to Configure Statistics Processing and Maintenance](#) and [How to Configure Statistics Transfer](#).

Configure Statistics Data Collection

Statistics files can be simultaneously collected from multiple systems. The CC Statistics Collector and CC Statistics Viewer services allow data collection by range and by cluster. These two services must be created and configured on the box layer of the Control Center.

For more information, see [How to Configure the Statistics Services](#).

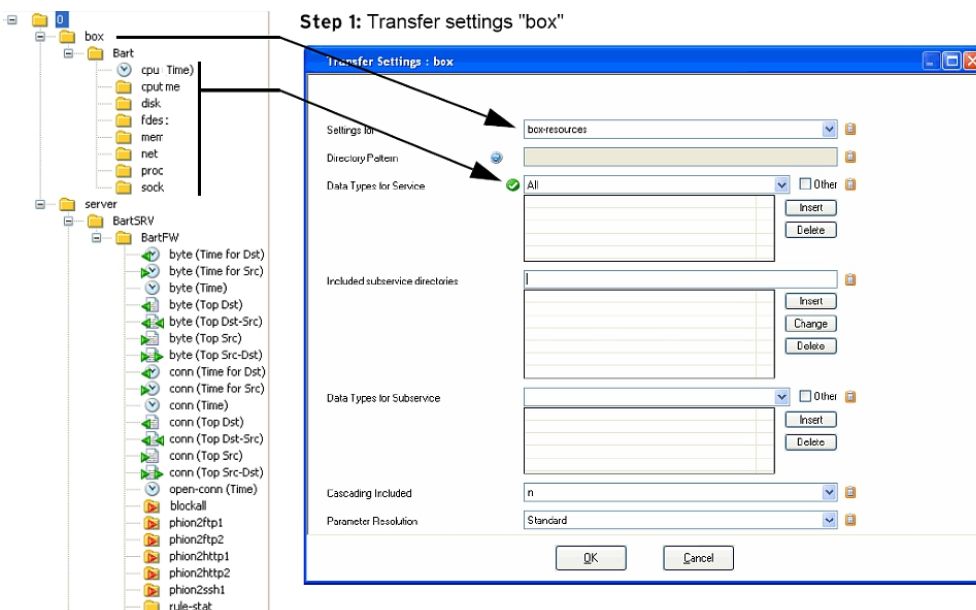
Statistics Monitoring

You can view and monitor the status of statistics collection from each managed F-Series Firewall on the Control Center. From the **Statistics Collection** page, you can also manually get and recover lost statistics entries.

For more information, see [How to Monitor and Recover Statistics](#).

Examples for Transfer Settings

Transfer all Box and Server Files:



Barracuda CloudGen Firewall

Step 2: Transfer settings "srv"

The screenshot shows the 'Transfer Settings : srv' dialog box. The left pane shows a tree view with 'BartSRV' selected. The main window has the following fields:

- Settings for: pattern-match
- Directory Pattern: /*server/*
- Data Types for Service: All
- Included subservice directories: (empty)
- Data Types for Subservice: All
- Cascading Included: y
- Parameter Resolution: Standard

Partial Transfer:

The screenshot shows the 'Config Section Dialog' for a partial transfer. The left pane shows a tree view with 'BartSRV' selected. The main window has the following fields:

- Name: fw
- Settings for: Firewall
- Directory Pattern: (empty)
- Data Types for Service: Time
- Included subservice directories: phion2vsh1
- Data Types for Subservice: All
- Cascading Included: y
- Parameter Resolution: Standard

The 'Included subservice directories' list shows the following values:

Value
rule-stat
block-all
phion2ftp1
phion2ftp2
phion2http1
phion2http2
phion2ssh1

