

Application Objects

<https://campus.barracuda.com/doc/46895693/>

Use application objects to reference applications when creating application-aware access rules. The **Applications** view lets you create predefined application lists to be employed in rulesets. When creating a new application object, you can also include (reference to) other application objects that are already configured.

Default Application Objects

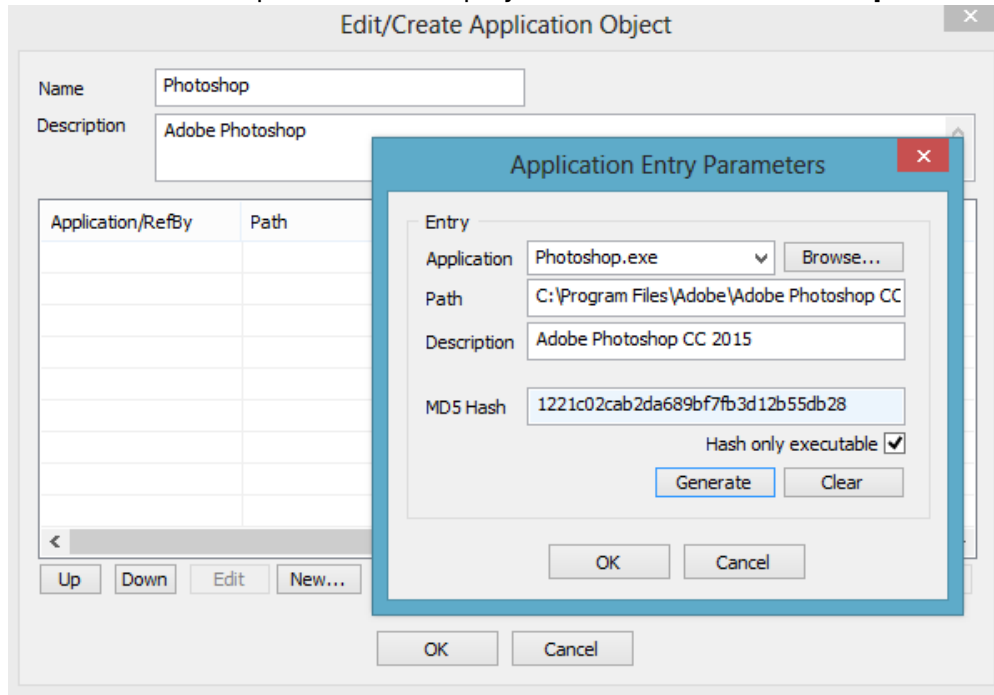
The following application objects, required in Microsoft Windows domains, are available by default in the Barracuda Personal Firewall:

Application	Connection	Description
System	Out / In	Services needed by the OS kernel.
TCP/IP Ping Command	Out / In	-
lsass.exe	Out	Local Security Authority Service. Process responsible for management of local security authority domain authentication and Active Directory management.
services.exe	Out	Upon startup, services.exe enumerates through all registry sub-keys located in the HKEY_LOCAL_MACHINE\Services registry key.
spoolsv.exe	Out	The Windows Printer Spooler stores printer jobs and forwards them to the printer when it is ready.
userinit.exe	Out	By default, WinLogon executes this application that triggers logon scripts, re-establishes network connections, etc.
winlogon.exe	Out	This application manages security-related user interactions in Windows NT. It handles requests to log on or off, to change passwords, etc.
svchost.exe	Out	This is a generic host process name for services run from dynamic-link libraries (DLLs). There can be multiple instances of svchost.exe running at the same time.

Create a New Application Object

1. Select **New** in the bottom bar or from the context menu in the **Applications** window.
2. Specify a **Name** for the application object.
3. Optionally, insert a **Description**.
4. Click **New** to specify an application. The **Application Entry Parameters** window opens.
5. Click **Browse** and select the file you want to create the object for. The path to the file and its

inherent file description will be displayed in the **Path** and **Description** fields below.



6. Click **Generate** to create an MD5 hash in order to clearly identify the selected file as soon as it is executed. MD5 hash creation is recommended in order to avoid file corruption and a vulnerable PC after an attack. Note that in case an application equipped with an MD5 hash is used on multiple clients, file versions must match exactly. The application object will otherwise not be applicable.
7. Click **OK** to add the application to the list.
8. Repeat steps 4 - 7 for every application that you want to include in the object.
9. Click **OK** to create the application object.

To save configuration changes made on the Barracuda CloudGen Firewall, click **Send Changes** and **Activate**. To save configuration changes made on the Barracuda Personal Firewall, use the option provided on the page, or click the **Alt** key, expand the **Firewall** menu, and select **Save Configuration**.

Figures

1. app_obj.png

© Barracuda Networks Inc., 2024 The information contained within this document is confidential and proprietary to Barracuda Networks Inc. No portion of this document may be copied, distributed, publicized or used for other than internal documentary purposes without the written consent of an official representative of Barracuda Networks Inc. All specifications are subject to change without notice. Barracuda Networks Inc. assumes no responsibility for any inaccuracies in this document. Barracuda Networks Inc. reserves the right to change, modify, transfer, or otherwise revise this publication without notice.