

Service Objects

<https://campus.barracuda.com/doc/46895696/>

The **Services** view allows you to view and configure service objects. Create service objects to reference IP protocols and, if TCP/UDP is used, the destination port numbers, when configuring access rules. When creating a new service object, you can also include (reference to) other service objects that are already configured.

Default Service Objects

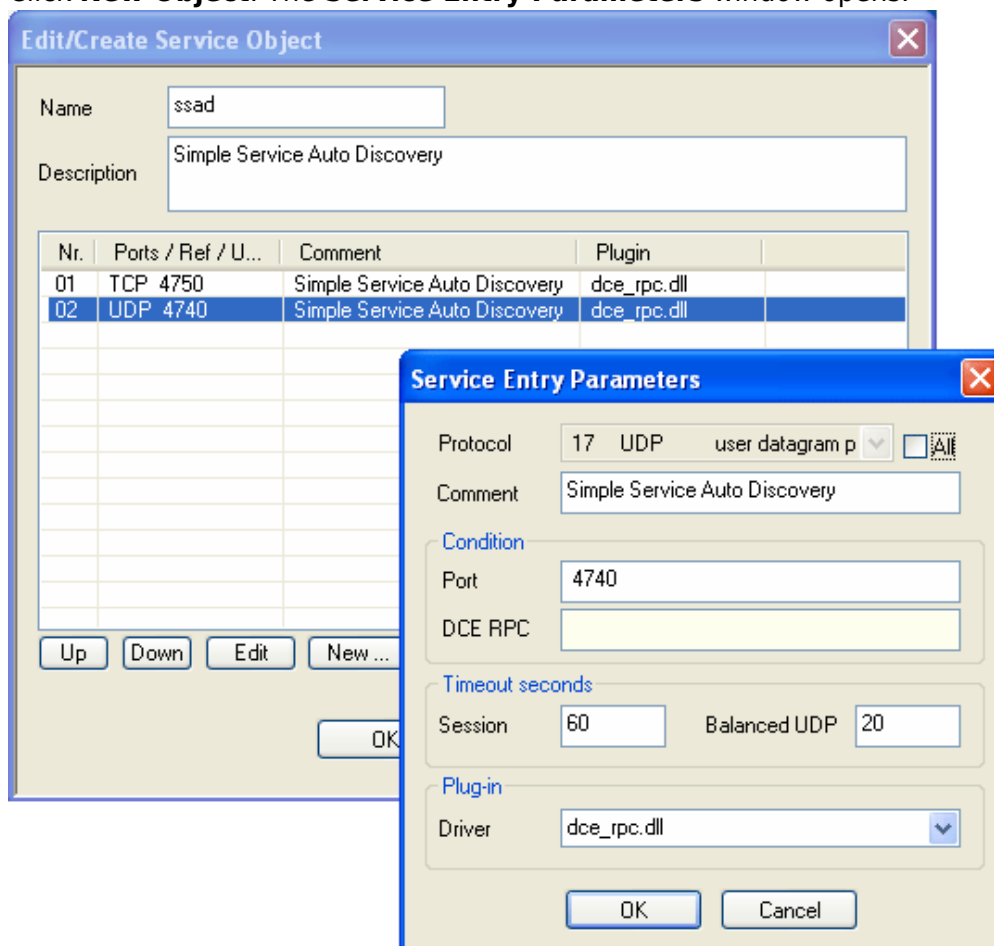
The following predefined services are available by default in the Barracuda Personal Firewall:

Service Name	Port	Protocol	Connection	Description
-	-	ICMP	Out/In	Internet Control Message Protocol: ICMP messages, delivered in IP packets, are used for out-of-band messages related to network operation or misoperation.
DNS	53	TCP/UDP	Out	Domain Name Service: Method by which the Internet addresses in mnemonic form are converted into the equivalent numeric IP addresses.
BOOTPS	67	UDP	Out	Bootstrap protocol: Also used for DHCP (Dynamic Host Configuration).
Kerberos	88	TCP/UDP	Out	Authentication protocol: Used for authentication in Windows 2000 environments.
NTP	123	UDP	Out	Network Time Protocol: Used to synchronize the time of a computer client or server to another server or reference time source.
LOC-SRV/EPMAP	135	TCP	Out	NETBIOS: A very common protocol supported on both ethernet and TokenRing. In NetBIOS, TCP and UDP communication is supported. It supports broadcasts, multi-casting, and also three distinct services: Naming , Session , and Datagram .
NETBIOS-NS	137	UDP	Out/In	
NETBIOS-DGM	138	UDP	Out/In	
NETBIOS-SSN	139	TCP	Out/In	
SNMP	161	UDP	Out	Simple Network Protocol: Network management system containing two primary elements, the Manager (console to perform network management functions) and the Agents (entities that interface to the actual managed device). SNMP allows Managers and Agents to communicate.
LDAP	389	TCP/UDP	Out	Lightweight Directory Access Protocol: A set of protocols for accessing information directories.

CIFS	445	TCP	Out/In	The new SMB: Further development of the SMB protocol that also serves as an addition and improvement to the standard protocols FTP and HTTP.
MSTASK	1026	TCP	Out	Windows Task Scheduler: Used to schedule tasks, such as backups or updates, to run at certain times or dates.

Create a New Service Object

1. Select **New** in the bottom bar or from the context menu in the **Service Objects** window.
2. Specify a **Name** for the service object.
3. Optionally, insert a **Description**.
4. Click **New Object**. The **Service Entry Parameters** window opens.



5. From the **Protocol** list, select the required protocol, or select **All** to use all protocols.
6. Fill in the required fields depending on the selected protocol.
7. Click **OK**.
8. Click **OK** to create the service object.

To save configuration changes made on the Barracuda CloudGen Firewall, click **Send Changes** and **Activate**. To save configuration changes made on the Barracuda Personal Firewall, use the option provided on the page, or click the **Alt** key, expand the **Firewall** menu, and select **Save Configuration**.

Figures

1. `srv_obj.png`

© Barracuda Networks Inc., 2020 The information contained within this document is confidential and proprietary to Barracuda Networks Inc. No portion of this document may be copied, distributed, publicized or used for other than internal documentary purposes without the written consent of an official representative of Barracuda Networks Inc. All specifications are subject to change without notice. Barracuda Networks Inc. assumes no responsibility for any inaccuracies in this document. Barracuda Networks Inc. reserves the right to change, modify, transfer, or otherwise revise this publication without notice.