
Barracuda NextGen Admin

<https://campus.barracuda.com/doc/48202798/>

Barracuda NextGen Admin is a stand-alone, multi-administrator Microsoft Windows application used to administer NextGen F-Series and FSC-Series Firewalls and Control Centers. Unlike web-based administration portals, NextGen Admin lets you manage multiple firewalls from a single interface that remains independent from web browser incompatibilities. NextGen Admin is backward-compatible to firmware version 5.2, allowing you to always use the latest NextGen Admin even if you are managing older firmware releases.

Download NextGen Admin

Barracuda NextGen Admin can be downloaded directly from the [Barracuda web portal](#).

System Requirements

- Windows 7, Windows 8/8.1, or Windows 10
- Microsoft .NET Framework 4.0 or higher
- 30 MB free disk space
- 1 GB RAM
- 1 GHz CPU

Connecting to a NextGen Firewall F-Series or NextGen Control Center

1. Start Barracuda NextGen Admin.
2. In the **New Session** tab, select the login type:
 - **Firewall** - Select **Firewall** to connect to an F-Series Firewall or the box layer of a NextGen Control Center.
 - **Control Center** - Select **Control Center** to log in to the NextGen Control Center.
 - **SSH** - Select **SSH** to open an ssh connection to the box layer of the Control Center or F-Series Firewall.
3. Enter the **IP Address / Name**. This is either an IPv4 or IPv6 management IP address or a hostname resolving to a management IP address.
4. Enter the login credentials. The default values for all hardware and virtual Barracuda NextGen Firewall F-Series units and NextGen Control Center are:
 - **Username** - root
 - **Password** - ngf1r3wall



Firewall Control Center SSH

IP Address / Name

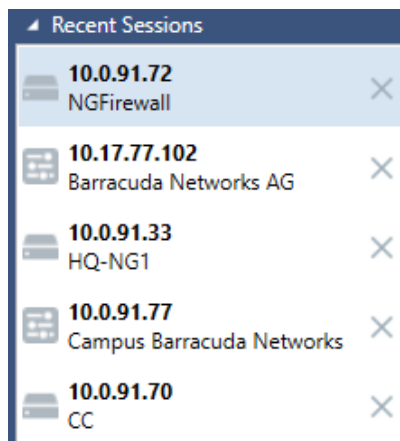
Username

Password

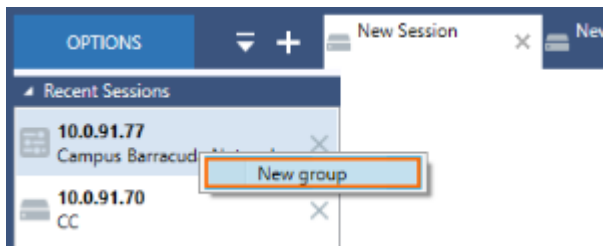
5. Click **Sign In**.

Recent Connections

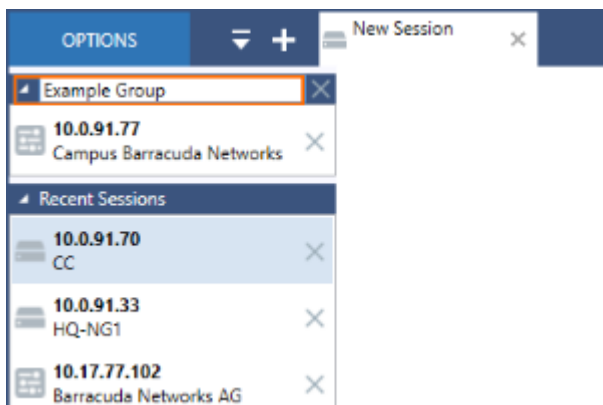
To simplify access and for informational purposes, Barracuda NextGen Admin automatically stores box names and IP addresses of recently established NextGen Admin sessions in the **Recent Sessions** list. All connections are listed in the menu bar on the top left of the page.



To arrange NextGen Admin sessions in groups, right-click a session in the list and select **New Group**.



Enter a descriptive name in the header field.



To add a session to the group, drag it into the group list. You can expand and collapse the group view by clicking the arrow icon in the left corner of the header field. To remove a session from the group, click the **X** icon, or right-click the entry and select **Recent Sessions**. To remove a group from the list, click the **X** icon next to the group header field. After a group has been deleted, all sessions are moved back to the **Recent Sessions** list.

If you want to change a host entry in the **Recent Sessions** list on an F-Series Firewall,

1. Go to **CONFIGURATION > Configuration Tree > Box > Network**.
2. In the left menu expand **Configuration Mode** section and click **Advanced View**.
3. In the left menu, select **IP configuration**.
4. Click **Lock**.
5. Change the **Hostname**.
6. Click **Send Changes** and **Activate**.
7. Perform a Failsafe network activation. For more information, see [How to Activate Network Changes](#).

To change a host entry on a Control Center,

1. Go to **CONFIGURATION > Configuration Tree > Multi-Range > Global Settings > CC Identity**.
2. In the left menu, select **Identification**.
3. Change the **Organization**.
4. Click **Send Changes** and **Activate**.

If you want to remove a connection from the list, click the **X** icon next to the entry.

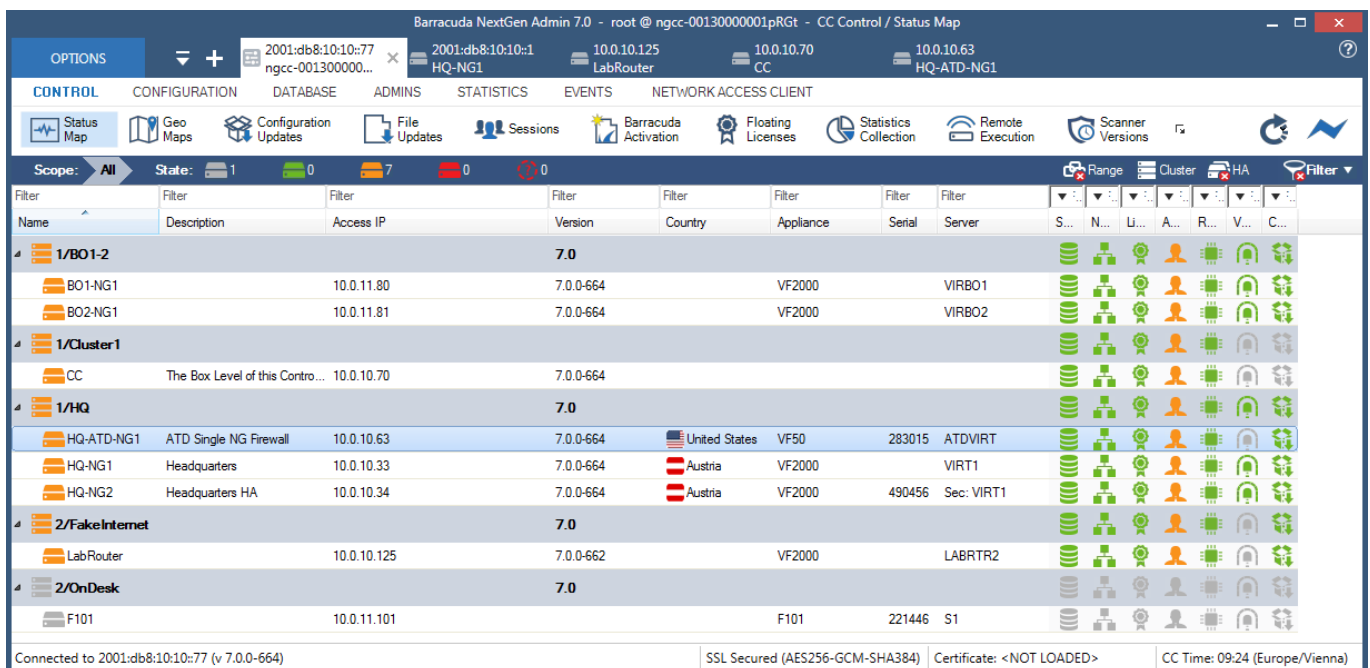
Changing Display Settings

If you do not want IP addresses or other details of recent connections to be visible in the **Recent Sessions** list, adjust the client settings:

1. Go to **OPTIONS > Settings > Client Settings**.
2. In the **Log in** section, select or unselect the following check boxes:
 - **Save session information** - Enables/disables information to be displayed in the **Recent Sessions** list.
 - **Save user name** - Enables/disables user details to be displayed.

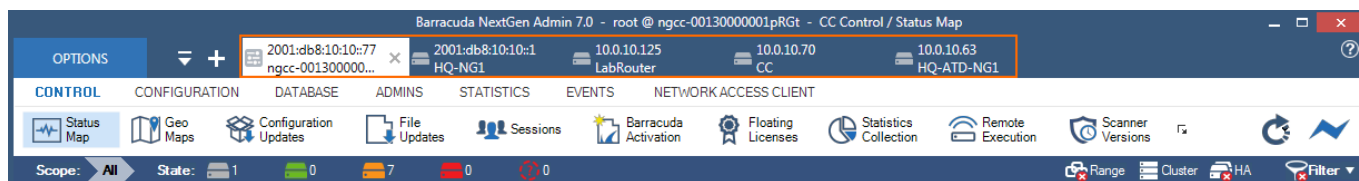
User Interface

The NextGen Admin user interface is divided into several functional sections. Although the content on a NextGen Firewall F-Series differs from the NextGen Control Center, position and basic functions are identical. The following screenshot shows the NextGen Admin application connected to a Control Center:



Box Tabs

A tab above the ribbon bar is created for each F-Series Firewall or Control Center you are logged into. You can log into a single system multiple times. You can also reorganize the tabs by dragging them.

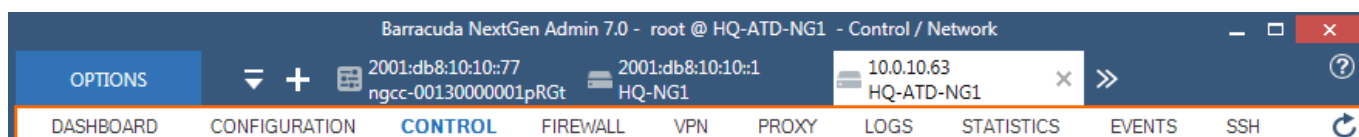


The tab for the selected unit is always highlighted. Clicking open tabs allows you to switch between connected units.

Click the **Options** tab on the top left to access the NextGen Admin settings menu, where you can configure general settings for the NextGen Admin application, such as the behavior of connections and configuration elements. For more information, see [NextGen Admin Settings](#).

Service Bar

The service bar is the main navigation and operation utility of the user interface and provides a tab for each main section of the NextGen Firewall F-Series or Control Center. Additional services introduced on the NextGen Firewall F-Series, e.g., Mail Gateway or VPN, add further tabs to this bar from where you can access settings and sub-sections depending on the configured service.



On the NextGen Firewall F-Series, the NextGen Admin interface service bar contains the following tabs:

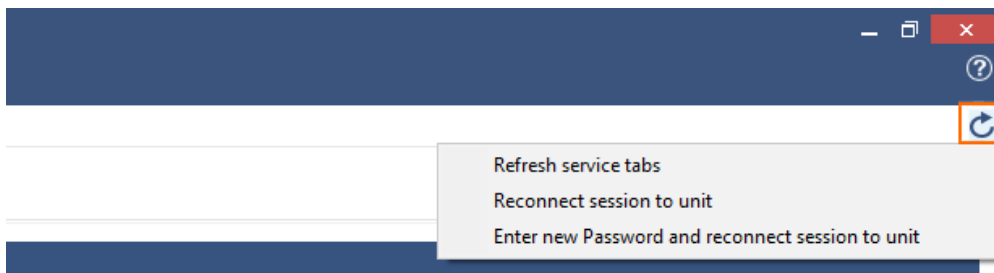
- **DASHBOARD** – Provides a general system overview of your NextGen Firewall F-Series or NextGen Control Center (box level). For more information, see [DASHBOARD Tab](#).
- **CONFIGURATION**– Contains the operative configuration tree for the NextGen Firewall F-Series or Control Center. For more information, see [CONFIGURATION Tab](#).
- **CONTROL** – Shows information about virtual server and services, current network status, running processes, system and license status. For more information, see [CONTROL Tab](#).
- **FIREWALL** – Provides real-time and historical information on network traffic and application traffic passing the NextGen Firewall F-Series. For more information, see [FIREWALL Tab](#).
- **DHCP** – Shows DHCP leases and reservations. For more information, see [DHCP Tab](#).
- **NETWORK ACCESS CLIENT** – Shows information from all connected NAC clients and the Access Control Service. For more information, see [Barracuda Network Access and VPN Client](#).
- **VPN** – Provides access to VPN real-time information for site-to-site and client-to-site VPN

connections, if configured. For more information, see [VPN Tab](#).

- **MAILGW** – For more information, see [Mail Gateway](#).
- **PROXY** – For more information, see [PROXY Tab](#).
- **LOGS** – Contains information related to system and service logs. For more information, see [LOGS Tab](#)
- **STATISTICS** – Contains information related to statistics generated on the Barracuda NextGen Firewall F-Series. For more information, see [STATISTICS Tab](#).
- **EVENTS** – Contains information related to events that are created on the Barracuda NextGen Firewall F-Series. For more information, see [EVENTS Tab](#).
- **SSH** – Provides the login to the command line interface of the NextGen Firewall F-Series. For more information, see [SSH Tab](#) and [Command-Line Interface](#).

Right-click the **Refresh** icon on the top right to access the context menu with the following options:

- **Refresh service tabs** – Reloads the NextGen Admin interface.
- **Reconnect session to unit** – Reconnects the NextGen Admin session.
- **Enter new Password and reconnect session to unit** – Reconnects the NextGen Admin session using a login password.

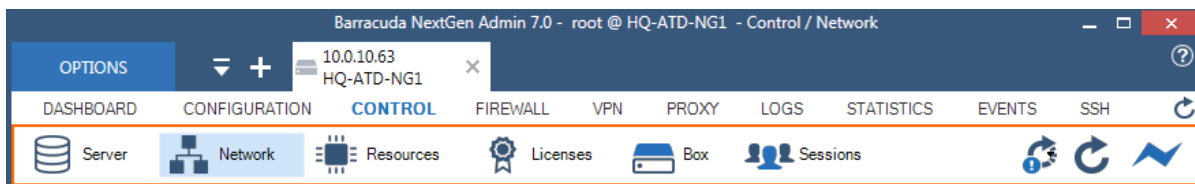


On the NextGen Control Center, the NextGen Admin interface service bar contains the following tabs:

- **CONTROL** – Provides an overview of all connected units on the NextGen Control Center. For more information, see [CC CONTROL Tab](#).
- **CONFIGURATION** – Contains the configuration sections for the NextGen Control Center. For more information, see [CC CONFIGURATION Tab](#).
- **DATABASE** – Provides details and quick access to available ranges, clusters, boxes, servers, and services of the NextGen Control Center. For more information, see [CC DATABASE Tab](#).
- **ADMINS** – Provides access to the section for the administrator's list. For more information, see [CC ADMINS Tab](#).
- **STATISTICS, EVENTS** – These tabs contain pages related to logs, statistics, and events.
- **NETWORK ACCESS CLIENT** – Shows information from all connected NAC clients and the Access Control Service. For more information, see [Barracuda Network Access and VPN Client](#).
- **FWAUDIT** – Provides access to the section for the Firewall Audit service. For more information, see [CC FWAUDIT Tab](#).

Ribbon Bar

Located directly under the service bar, the ribbon bar provides icons for each section relevant to the selected service bar tab. To access a section, open a tab in the service bar and select an icon from the ribbon bar to open the corresponding settings page. In some cases, you might have to expand the icons section in the ribbon bar to gain access to all sections.



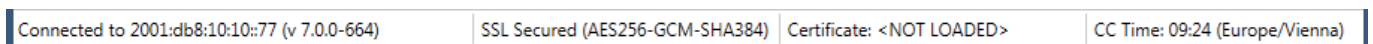
In the top right corner, the ribbon bar provides icons to specify system refresh settings. Clicking the last icon disconnects the unit. When disconnected, this icon changes to **Connect**.

Main Window

The main window contains the configuration and information part of NextGen Admin. Depending on the tabs and icons selected from the service and ribbon bars, the main window displays information that is relevant to the selected item and might also contain further tabs and subsections.

Status Bar

The status bar at the bottom of the NextGen Admin user interface displays information about the certificate status, the SSL connection, and the time zone specified within the box time settings.



Barracuda NextGen Firewall F-Series Configuration

On the **CONFIGURATION** page, you can configure all settings and services of the NextGen Firewall F-Series or NextGen Control Center. The config tree contains all configuration sections, listed in hierarchical levels, from where you can add and access virtual servers, firewall services, and, if on a NextGen Control Center, create and configure ranges and clusters, and add your NextGen F-Series

Firewalls. For more information, see [CONFIGURATION Tab](#).

Figures

1. login.png
2. favorites_recent_conns.png
3. group_00.png
4. group_01.png
5. ngadmin_ui.png
6. cc_box_tabs.png
7. service_bar.png
8. refresh.png
9. ribbon_bar.png
10. status_bar.png

© Barracuda Networks Inc., 2019 The information contained within this document is confidential and proprietary to Barracuda Networks Inc. No portion of this document may be copied, distributed, publicized or used for other than internal documentary purposes without the written consent of an official representative of Barracuda Networks Inc. All specifications are subject to change without notice. Barracuda Networks Inc. assumes no responsibility for any inaccuracies in this document. Barracuda Networks Inc. reserves the right to change, modify, transfer, or otherwise revise this publication without notice.