

How to Deploy a NextGen F-Series Vx on Hyper-V

<https://campus.barracuda.com/doc/48203063/>

The Barracuda NextGen Firewall F-Series Vx is available as a virtual machine for your Microsoft Hyper-V hypervisor.

Before deploying the Barracuda NextGen Firewall F-Series Vx, verify that the host system meets the minimum storage requirements and review the resource recommendations for the production system.

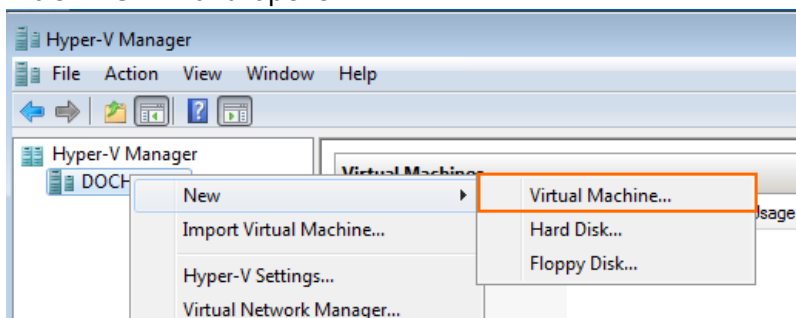
Before you begin

- For information regarding the sizing of your CPU, disk, and RAM, see [Virtual Systems \(Vx\)](#).
- Download the Barracuda NextGen Firewall F-Series Vx VHD virtual disk image from the [Barracuda Download Portal](#).
- Copy the VHD virtual disk image to the Microsoft Hyper-V server.
- Make sure the Hyper-V virtual machine uses a static MAC address.


Step 1. Create a new Virtual Machine

Create a virtual machine using the sizing recommendations for your model of the Barracuda NextGen Firewall F-Series Vx.

1. Launch Hyper-V Manager.
2. Right click on your Hyper V server and select **New > Virtual Machine**. The **New Virtual Machine Wizard** opens.




3. Enter the **Name**. E.g., Barracuda NextGen Firewall F-Series Vx
4. Click **Next**.

Before You Begin	Choose a name and location for this virtual machine.
Specify Name and Location	The name is displayed in Hyper-V Manager. We recommend that you use a name that helps you easily identify this virtual machine, such as the name of the guest operating system or workload.
Assign Memory	Name: <input type="text" value="Barracuda NG Vx"/>
Configure Networking	You can create a folder or use an existing folder to store the virtual machine. If you don't select a folder, the virtual machine is stored in the default folder configured for this server.
Connect Virtual Hard Disk	<input type="checkbox"/> Store the virtual machine in a different location
Installation Options	Location: <input type="text" value="C:\ProgramData\Microsoft\Windows\Hyper-V\"/> <input data-bbox="981 517 1061 539" type="button" value="Browse..."/>
Summary	 If you plan to take snapshots of this virtual machine, select a location that has enough free space. Snapshots include virtual machine data and may require a large amount of space.

5. Enter the amount of **memory** in MB. E.g., 2048

6. Click **Next**.

Before You Begin	Specify the amount of memory to allocate to this virtual machine. You can specify an amount from 8 MB through 1048576 MB. To improve performance, specify more than the minimum amount recommended for the operating system.
Specify Name and Location	Memory: <input type="text" value="2048"/> MB
Assign Memory	 When you decide how much memory to assign to a virtual machine, consider how you intend to use the virtual machine and the operating system that it will run.
Configure Networking	More about determining the memory to assign to a virtual machine
Connect Virtual Hard Disk	
Installation Options	
Summary	

7. Select the virtual network from the **Connection** drop down.

8. Click **Next**.

Before You Begin	Each new virtual machine includes a network adapter. You can configure the network adapter to use a virtual network, or it can remain disconnected.
Specify Name and Location	Connection: <input type="text" value="extNetwork"/>
Assign Memory	More about configuring network adapters
Configure Networking	
Connect Virtual Hard Disk	
Installation Options	
Summary	

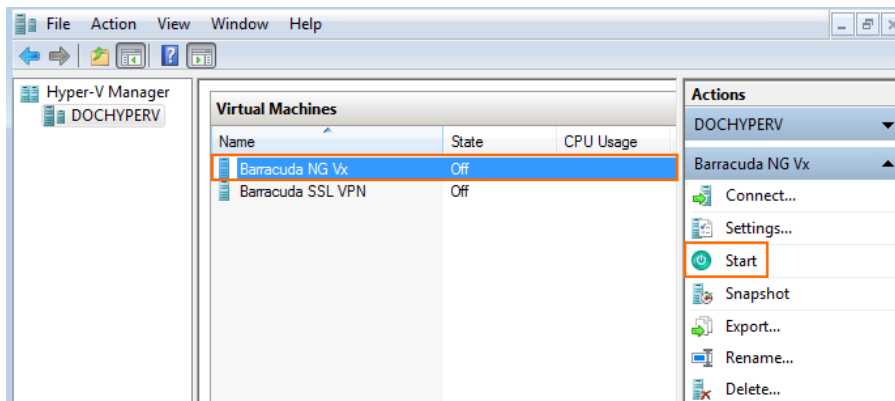
9. Select **Use an existing virtual disk** and enter the **Location** of the VHD file.

10. Click **Next**.

Before You Begin	A virtual machine requires storage so that you can install an operating system. You can specify the storage now or configure it later by modifying the virtual machine's properties.
Specify Name and Location	<input type="radio"/> Create a virtual hard disk
Assign Memory	Name: <input type="text" value="Barracuda NG Vx.vhd"/>
Configure Networking	Location: <input type="text" value="C:\Users\Public\Documents\Hyper-V\Virtual Hard Disks\"/> <input data-bbox="949 1429 1029 1451" type="button" value="Browse..."/>
Connect Virtual Hard Disk	Size: <input type="text" value="127"/> GB (Maximum: 2040 GB)
Installation Options	<input checked="" type="radio"/> Use an existing virtual hard disk
Summary	Location: <input type="text" value="C:\Virtual Hard Disks\BarracudaNGFirewall.vhd"/> <input data-bbox="949 1570 1029 1592" type="button" value="Browse..."/>
	<input type="radio"/> Attach a virtual hard disk later

11. Review the Summary and click **Finish**.

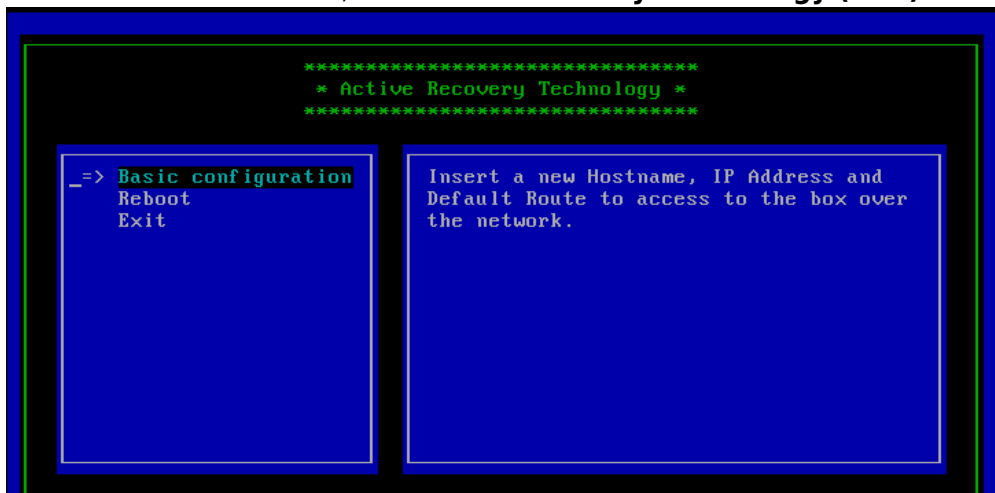
You can now launch the Barracuda NextGen Firewall F-Series Vx by selecting the virtual machine and clicking **Start** in the right pane.



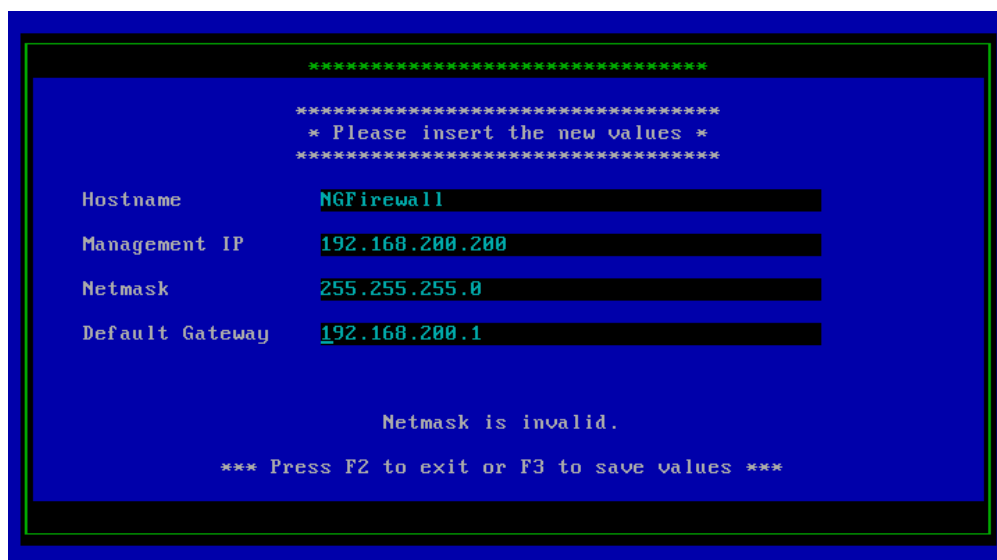
Step 2. Configure the Barracuda NextGen Firewall F-Series Vx on first boot

You need to connect to the console of the VM to enter the minimal network configuration.

1. Launch Hyper-V Manager.
2. In the **Virtual Machines** pane, double-click on the Barracuda NextGen Firewall F-Series Vx VM. The console of the virtual Barracuda NextGen Firewall F-Series Vx opens.
3. When the VM has started, the **Active Recovery Technology (ART)** menu is launched.



4. Select **Basic Configuration**, enter the following network settings, and then press **F3** to save your changes:
 - **Hostname** – The desired hostname for your Barracuda NextGen Firewall F-Series Vx unit.
 - **Management IP** – The internal IP address for your Barracuda NextGen Firewall F-Series Vx unit. This IP address must be reachable from your PC. E.g., 192.168.200.200
 - **Netmask** – The subnet mask. E.g., 255.255.255.0
 - **Default Gateway** – The IP address of the next hop device that serves as and access point to another network. E.g., 192.168.200.1



5. Press **F3** to save the configuration.
6. Select **Reboot**. The Barracuda NextGen Firewall F-Series Vx will restart with the new network configuration.

Next step

After you deploy the Barracuda NextGen Firewall F-Series Vx unit, continue with [Getting Started](#).

Figures

1. hyperV00.png
2. hyperV01.png
3. hyperV02.png
4. hyperV03.png
5. hyperV04.png
6. hyperV05.png
7. art_01.png
8. art_02.png

© Barracuda Networks Inc., 2024 The information contained within this document is confidential and proprietary to Barracuda Networks Inc. No portion of this document may be copied, distributed, publicized or used for other than internal documentary purposes without the written consent of an official representative of Barracuda Networks Inc. All specifications are subject to change without notice. Barracuda Networks Inc. assumes no responsibility for any inaccuracies in this document. Barracuda Networks Inc. reserves the right to change, modify, transfer, or otherwise revise this publication without notice.