

## How to Deploy a NextGen F-Series Vx on a Citrix XenServer

<https://campus.barracuda.com/doc/48203244/>

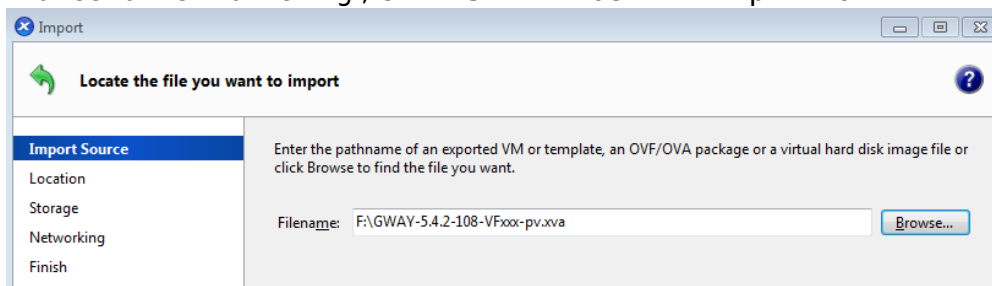
The Barracuda NextGen Firewall F-Series Vx is available as a fully virtualized or paravirtualized image for your Citrix XenServer version 6.0 or above. Before deploying the Barracuda NextGen Firewall F-Series Vx unit, verify that the host system meets the minimum storage requirements and review the resource recommendations for the production system.

### Before you begin

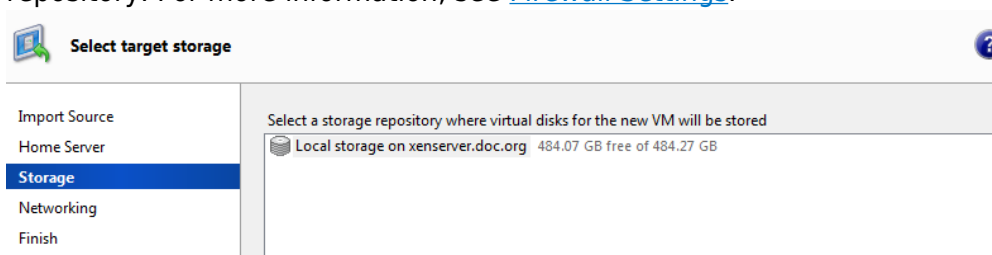
- For information regarding the sizing of your CPU, disk, and RAM, see [Virtual Systems \(Vx\)](#).
- Download the Citrix PV (paravirtualized) or HVM (fully virtualized) xva image from the [Barracuda Download Portal](#).

### Step 1. Deploy Citrix XenServer image

1. Launch Citrix XenCenter.
2. From the **File** menu, choose **Import VM**.
3. Browse to the xva file. E.g., `GWAY-5.4.2-108-VFxxx-pv.xva`

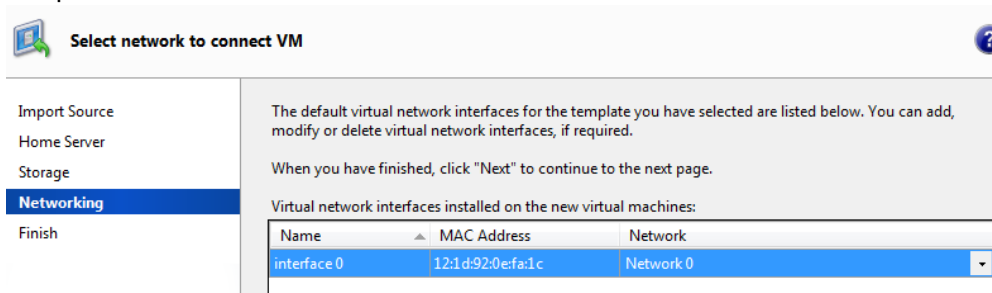


4. Click **Next**.
5. Select the **Home Server** (Citrix XenServer) to deploy the Barracuda NextGen Firewall F-Series on.
6. Click **Next**.
7. Select the **storage repository**. Note: Verify that there is enough free space on the storage repository. For more information, see [Firewall Settings](#).



8. Click **Import**.
9. Select the **MAC Address** for the virtual network adapter and if needed add more network

adapters.



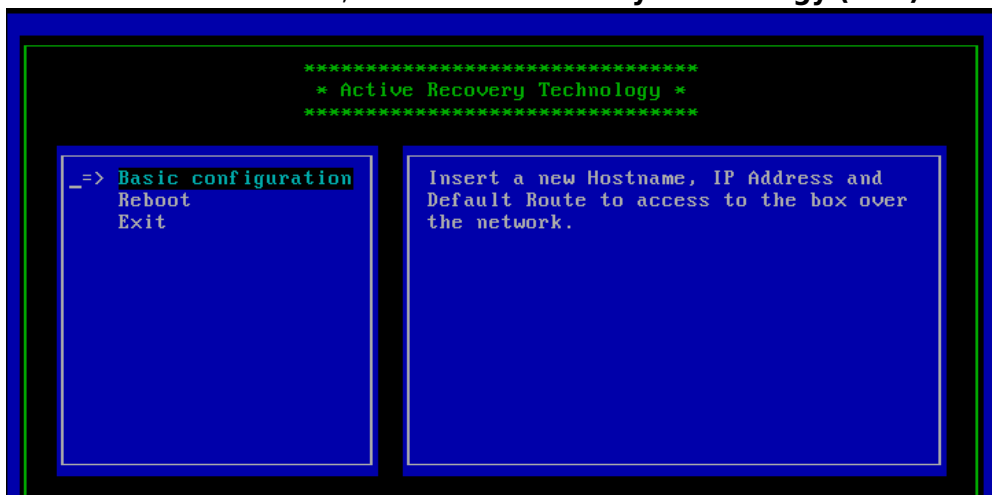
(optional) Before you start the Barracuda NextGen Firewall F-Series Vx for the first time, assign a manual MAC address to the first virtual network interface. This lets you move the VM later without invalidating your license.

10. Click **Next**.
11. Review the import settings and click **Finish**.

## Step 2. Configure the Barracuda NextGen Firewall F-Series Vx on first boot

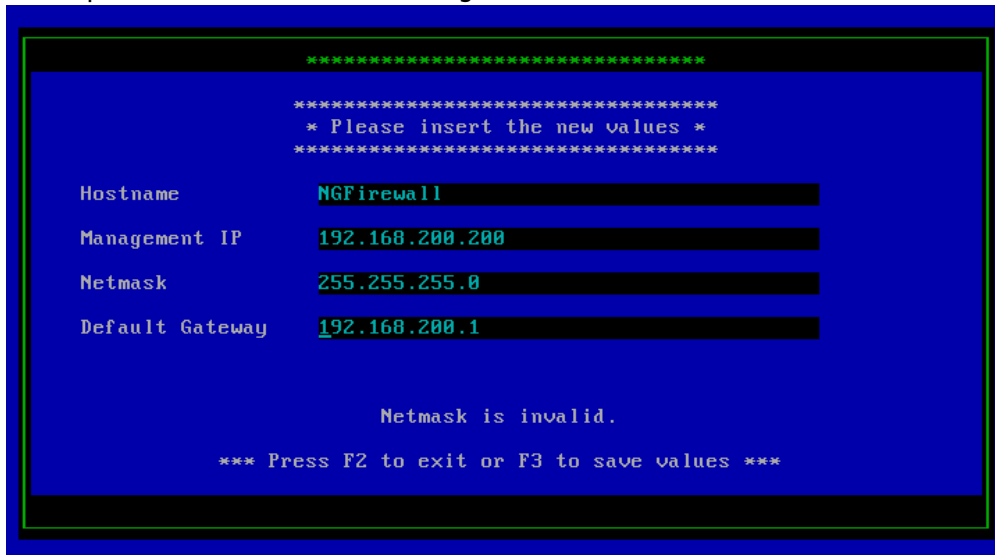
You need to connect to the console of the VM to enter the minimal network configuration.

1. Launch Citrix XenCenter.
2. In the left pane, click on the Barracuda NextGen Firewall F-Series Vx VM and select the **Console** tab. You can now see the console of the virtual Barracuda NextGen Firewall F-Series Vx.
3. When the VM has started, the **Active Recovery Technology (ART)** menu is launched.



4. Select **Basic Configuration**, enter the following network settings, and then press **F3** to save your changes:
  - **Hostname** – The desired hostname for your Barracuda NextGen Firewall F-Series Vx unit.
  - **Management IP** – The internal IP address for your Barracuda NextGen Firewall F-Series Vx unit. This IP address must be reachable from your PC. E.g., 192 . 168 . 200 . 200
  - **Netmask** – The subnet mask. E.g., 255 . 255 . 255 . 0

- **Default Gateway** – The IP address of the next hop device that serves as an access point to another network. E.g., 192.168.200.1



5. Press **F3** to save the configuration.
6. Select **Reboot**. The Barracuda NextGen Firewall F-Series Vx will restart with the new network configuration.

## Next step

After you deploy the Barracuda NextGen Firewall F-Series Vx unit, continue with [Getting Started](#).

## Figures

1. citrix01.png
2. citrix02.png
3. citrix03.png
4. art\_01.png
5. art\_02.png

© Barracuda Networks Inc., 2019 The information contained within this document is confidential and proprietary to Barracuda Networks Inc. No portion of this document may be copied, distributed, publicized or used for other than internal documentary purposes without the written consent of an official representative of Barracuda Networks Inc. All specifications are subject to change without notice. Barracuda Networks Inc. assumes no responsibility for any inaccuracies in this document. Barracuda Networks Inc. reserves the right to change, modify, transfer, or otherwise revise this publication without notice.