

How to Retrieve Items

<https://campus.barracuda.com/doc/48660993/>

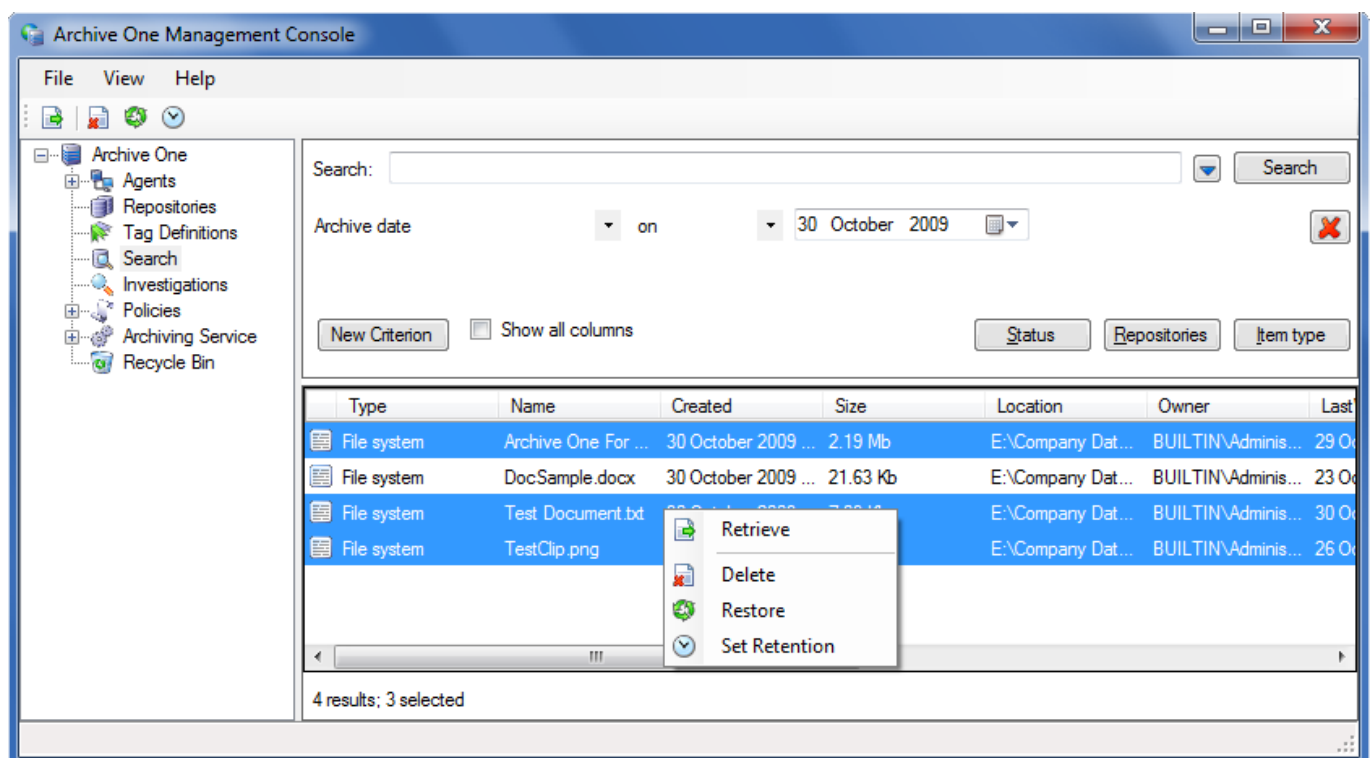
This article refers to the Barracuda ArchiveOne for Files version 7.2.0 and higher.

The Management Console provides a convenient way to retrieve disparate items that would otherwise have nothing in common apart from the search criteria.

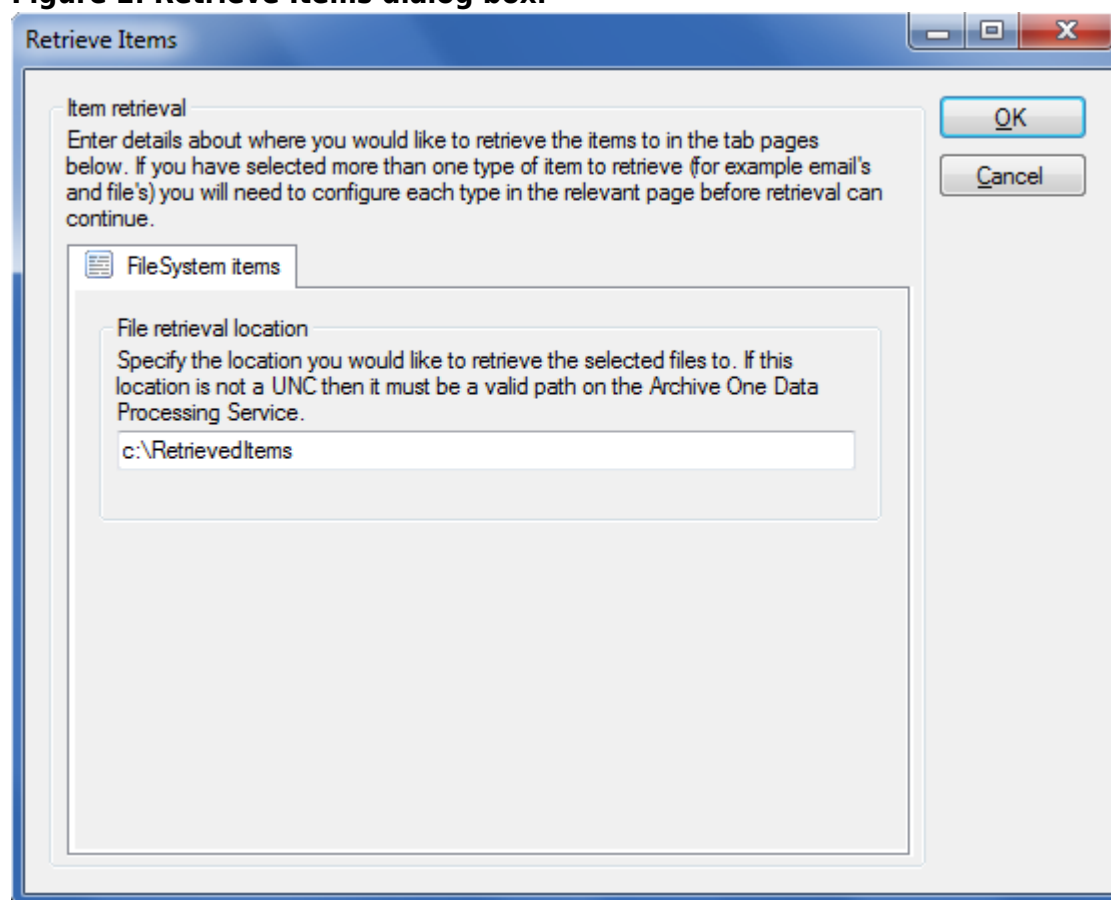
Once your search results are returned, use the Management Console to retrieve one or more items. Select a target directory, and Barracuda ArchiveOne for Files retrieves the original item and stores it in the designated target location. Note that as the Administrator you are retrieving data directly from the back-end repository via the Management Console, while end-user retrieval is based on retrieving via the stub file in the original disk location.

Once you select items within the search results for retrieval, right-click and click **Retrieve** from the context menu, as shown in Figure 1.

Figure 1. Search result with context menu.



Once you select **Retrieve**, the **Retrieve Items** dialog box displays. For example, Figure 2 shows the retrieve location as a file system directory.

Figure 2. Retrieve Items dialog box.

A confirmation dialog displays once the retrieval is complete.

Figures

1. search_context_menu.png
2. retrieve_items.png

© Barracuda Networks Inc., 2024 The information contained within this document is confidential and proprietary to Barracuda Networks Inc. No portion of this document may be copied, distributed, publicized or used for other than internal documentary purposes without the written consent of an official representative of Barracuda Networks Inc. All specifications are subject to change without notice. Barracuda Networks Inc. assumes no responsibility for any inaccuracies in this document. Barracuda Networks Inc. reserves the right to change, modify, transfer, or otherwise revise this publication without notice.