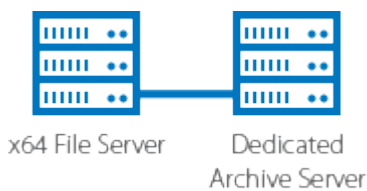


## Single x64-Based File Server with Dedicated Archive Server

<https://campus.barracuda.com/doc/49053801/>

This section refers to the Barracuda ArchiveOne for Files version 7.2.0 and higher.

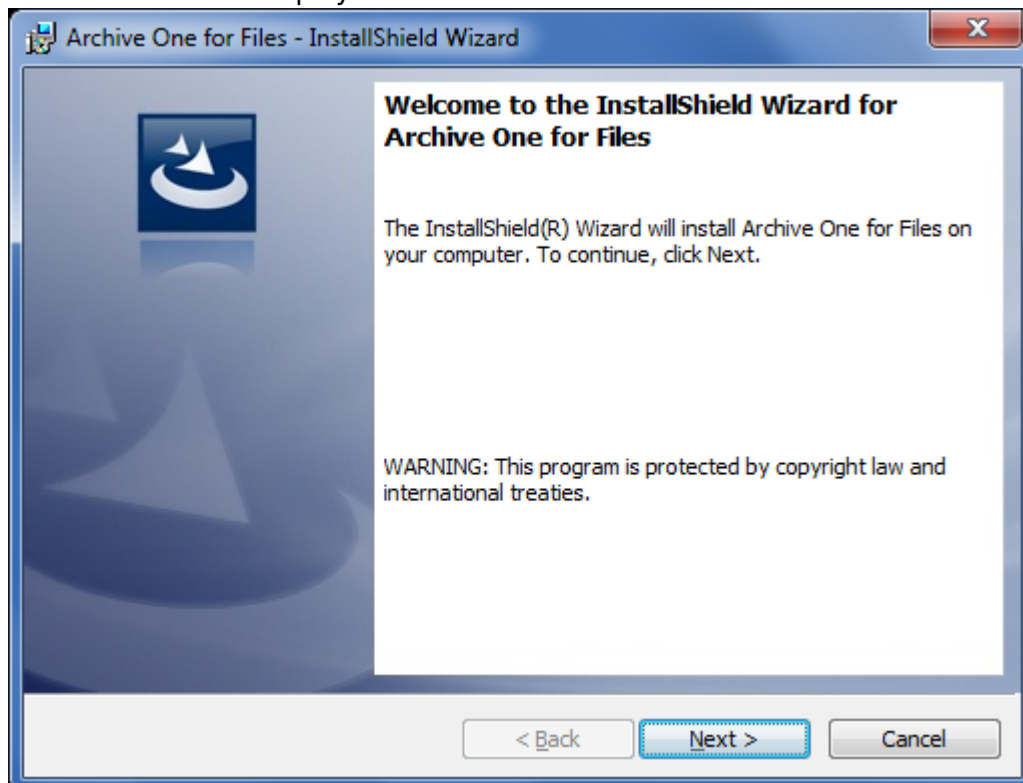
Use this installation if you have a single x64-based file server and wish to install the Agent on a separate Archive Server:



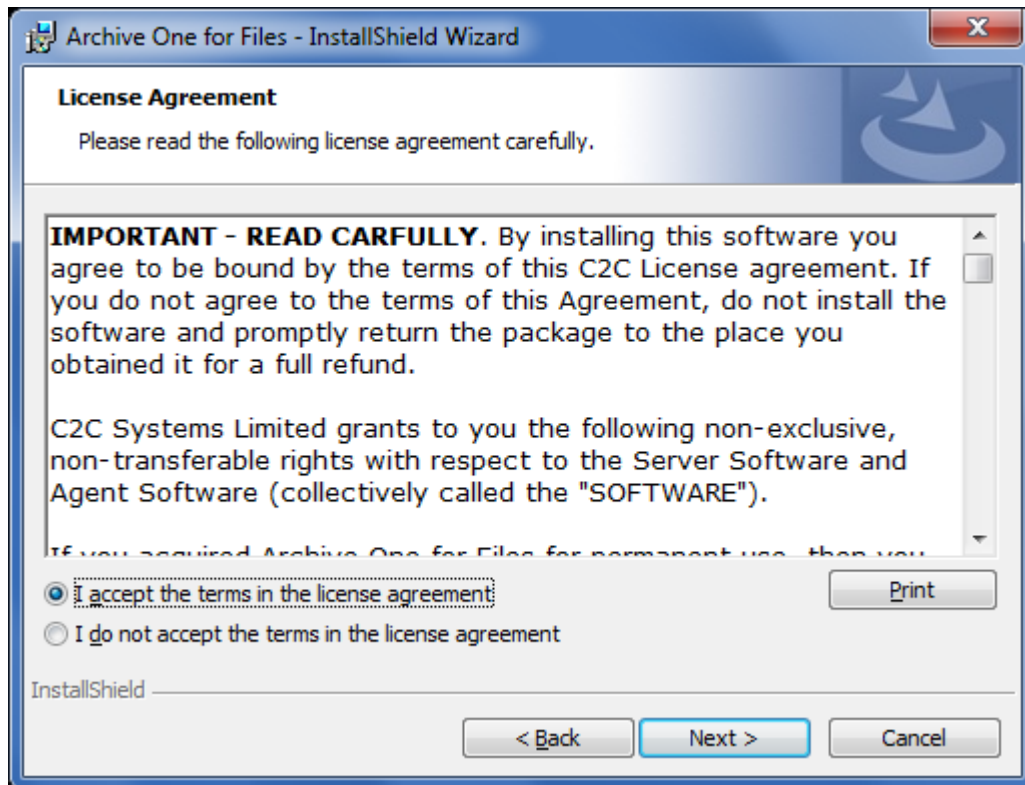
For other installation options, see [ArchiveOne for Files Installation Options](#).

### Step 1. Install Main Application

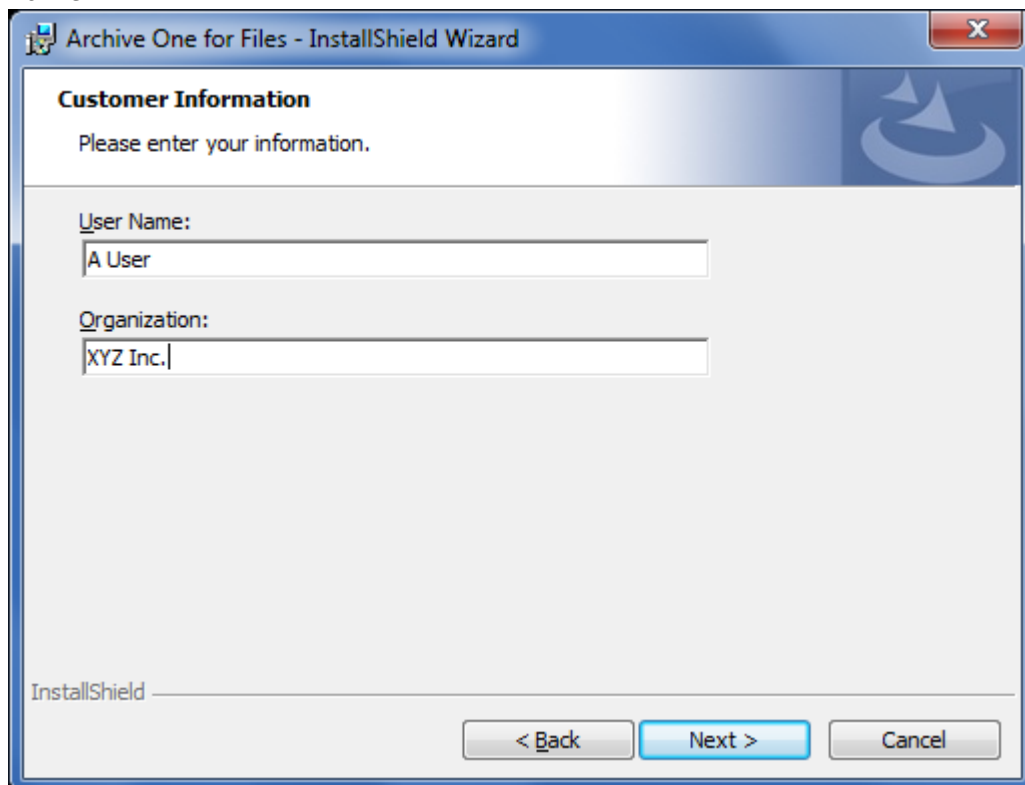
1. Log in to the Archive Server as the administrator, and run **ArchiveOneForFiles.exe**; the installation wizard displays:



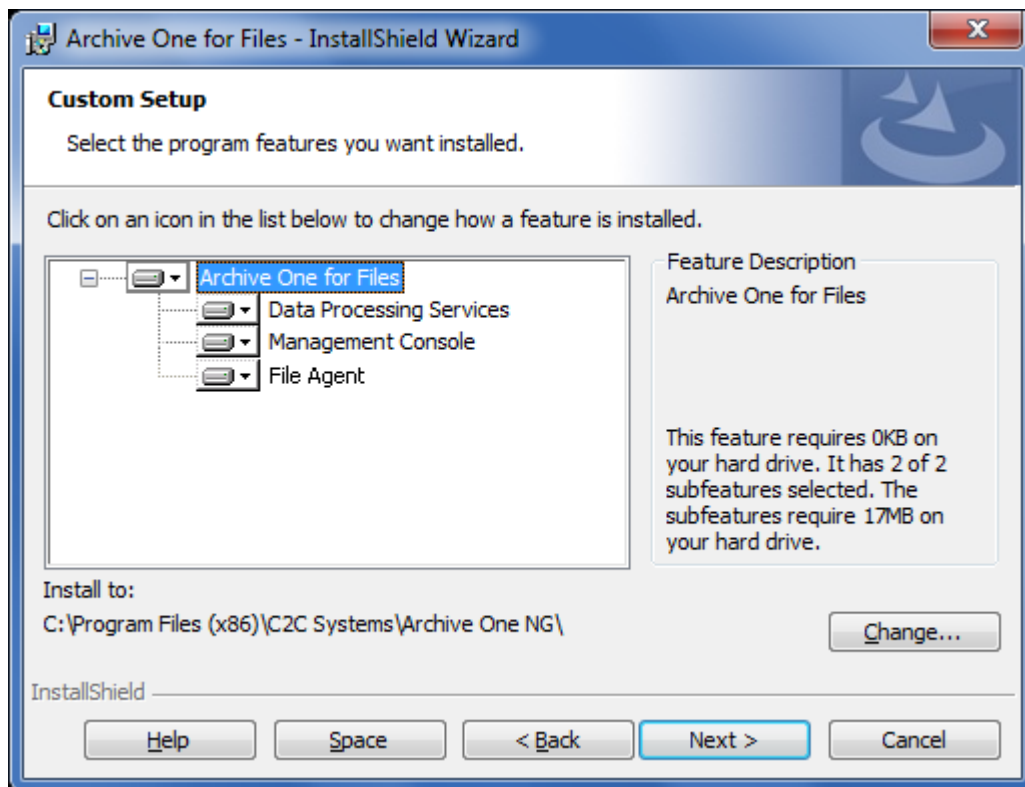
2. Click **Next**. Read and accept the **License Agreement**:



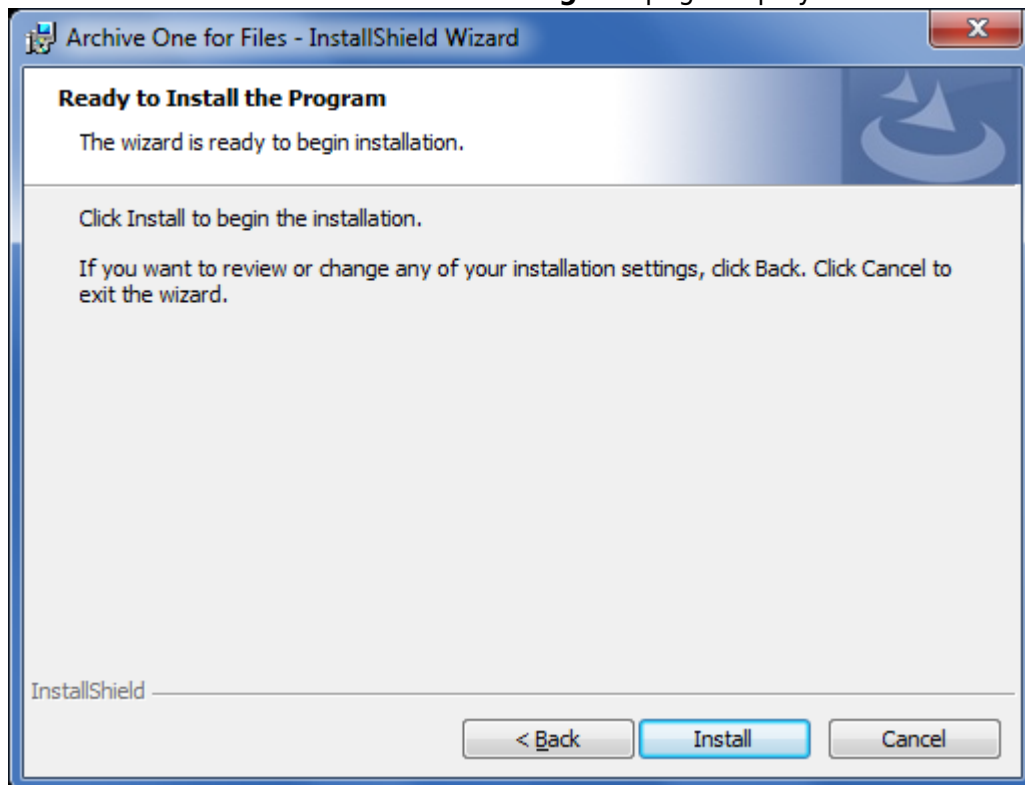
3. Click **Next**. In the **Customer Information** page, enter the **User Name** and **Organization** name:



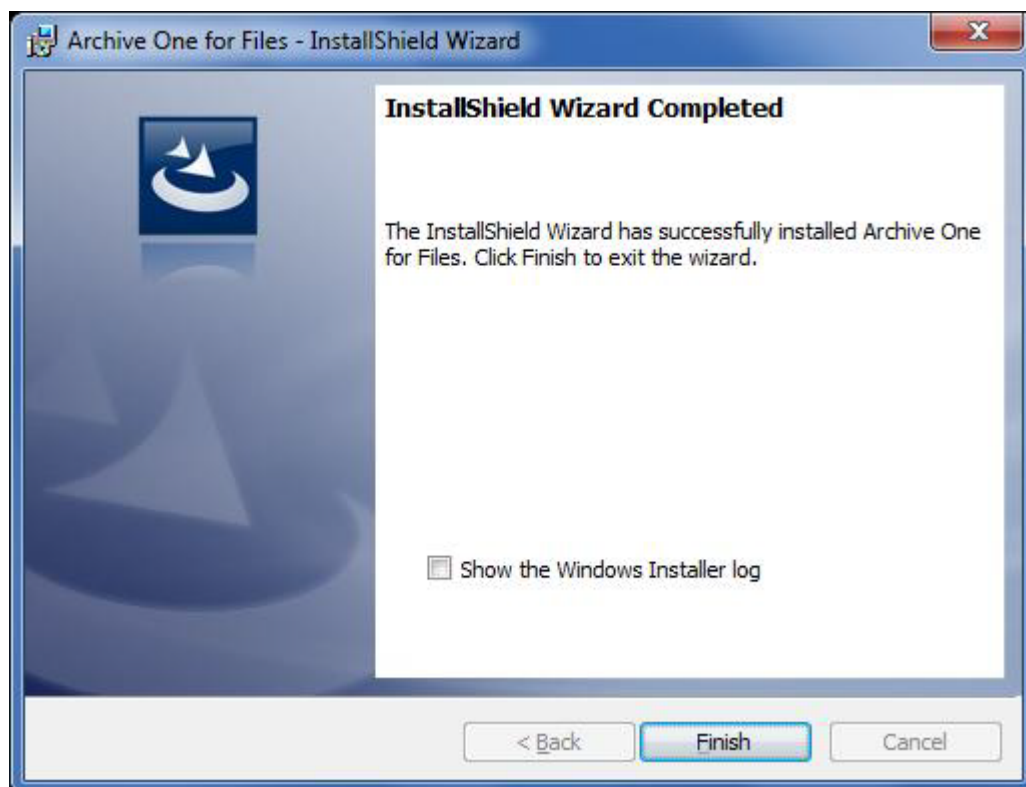
4. Click **Next**. The **Custom Setup** page displays. Select the components you wish to install as well as the location. By default all components are installed. If you are installing onto a separate Archive Server from your file Server, clear the **ArchiveOne for Files Agent** component:



5. Click **Next**. The **Ready to Install the Program** page displays:



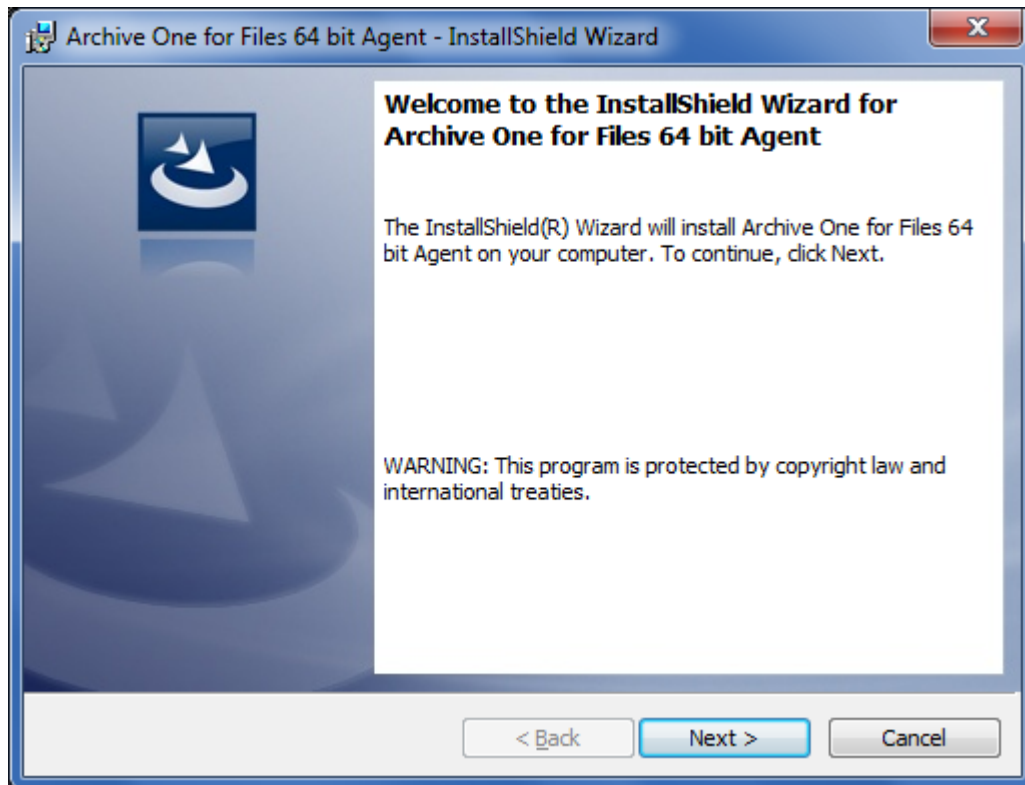
6. Click **Install** to begin the installation. Once the installation is complete, click **Finish**:



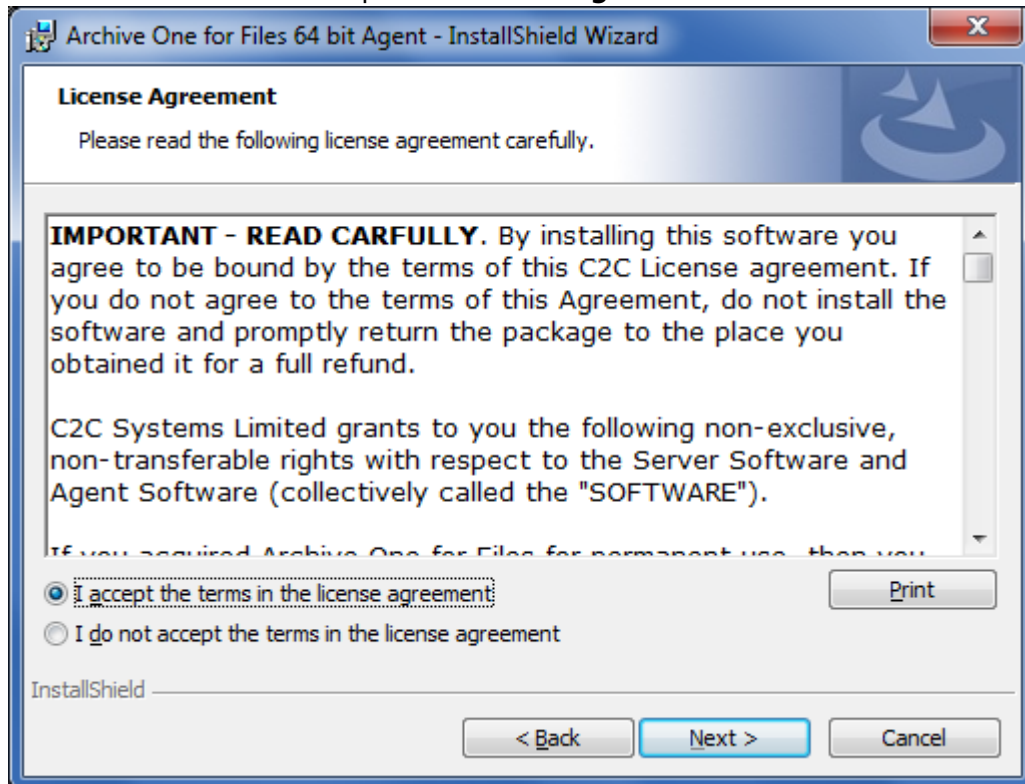
## Step 2. Install Agent on x64-Based File Server

Complete the following steps on the dedicated archive server.

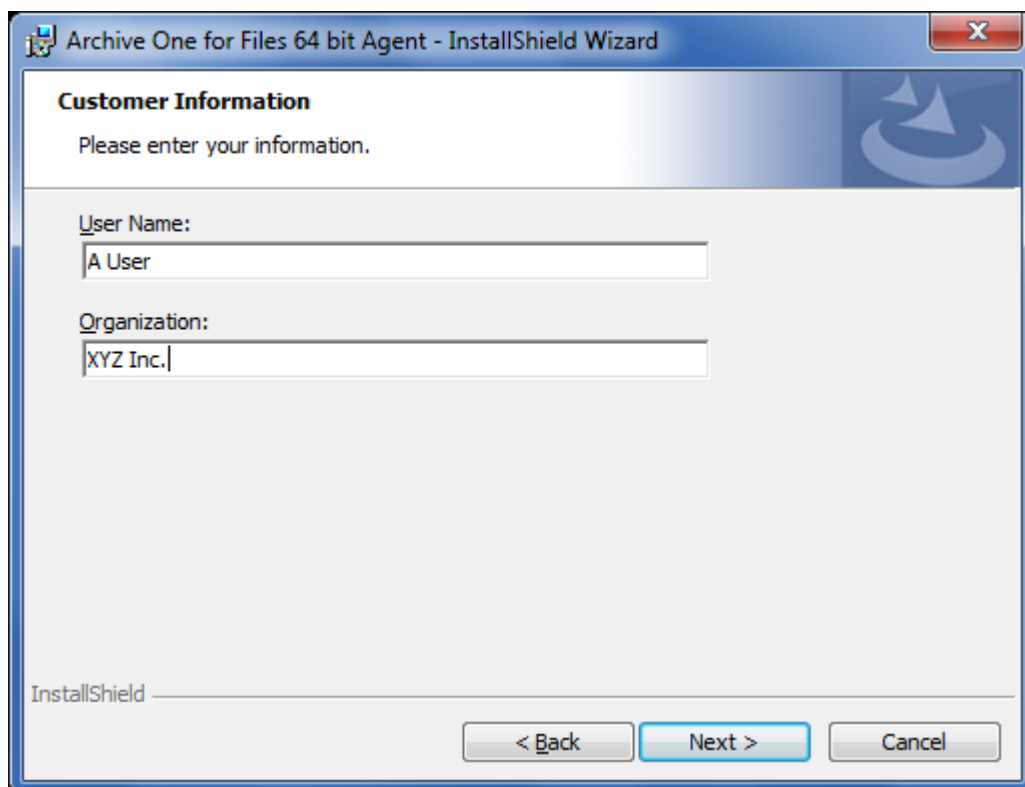
1. Log in to the x64-based file server as the administrator, and run **ArchiveOneForFiles64.exe**; the installation wizard displays:



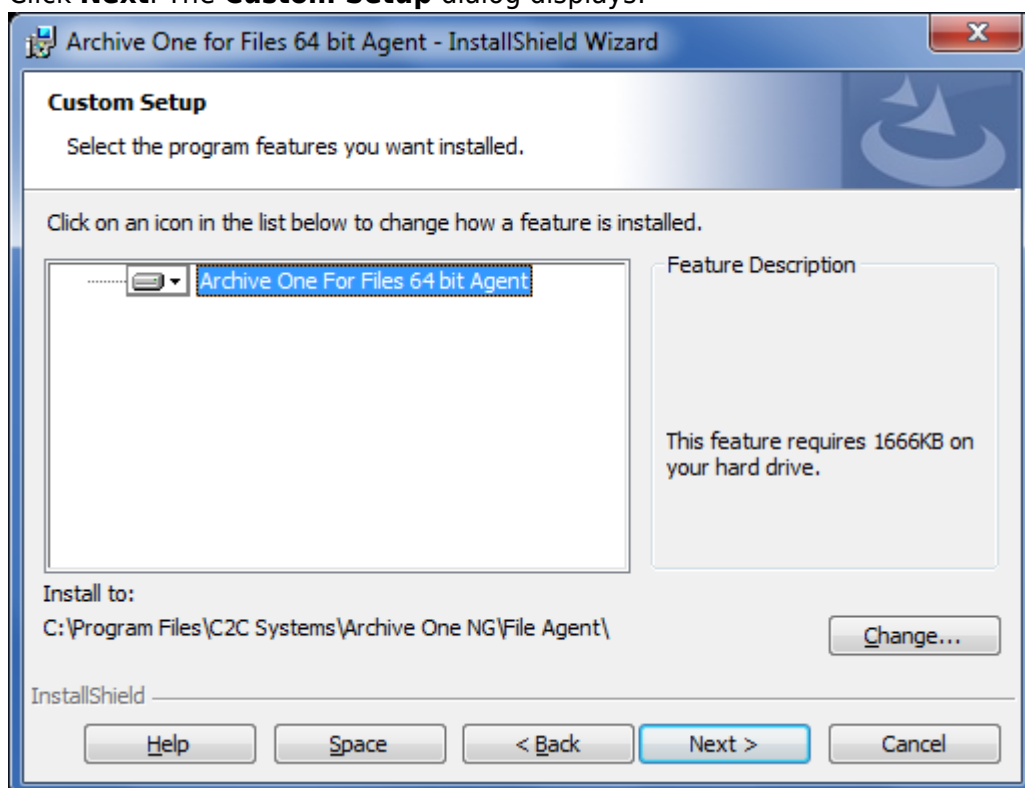
2. Click **Next**. Read and accept the **License Agreement**:



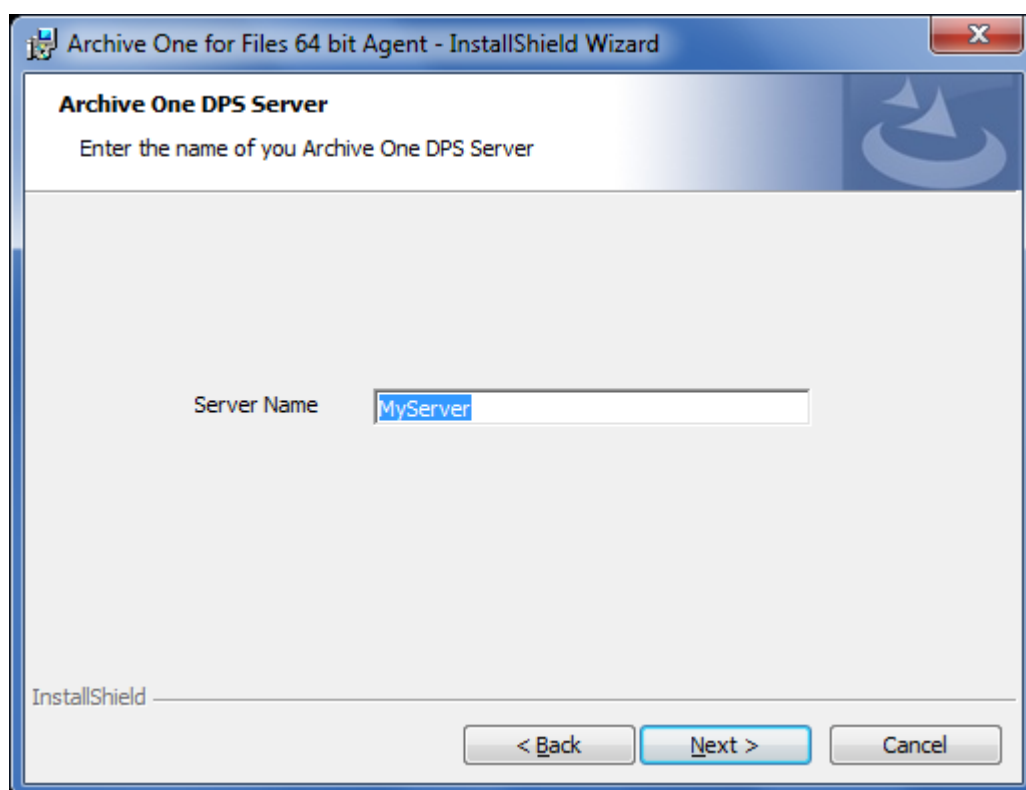
3. Click **Next**. In the **Customer Information** page, enter the **User Name** and **Organization** name:



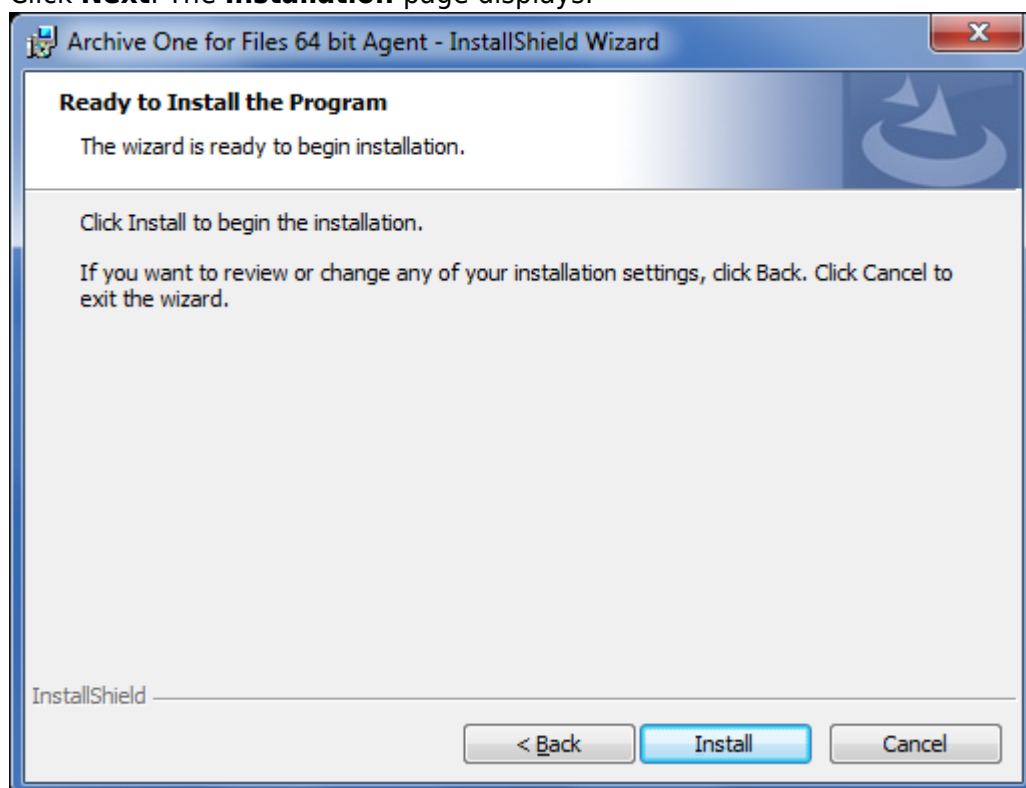
4. Click **Next**. The **Custom Setup** dialog displays:



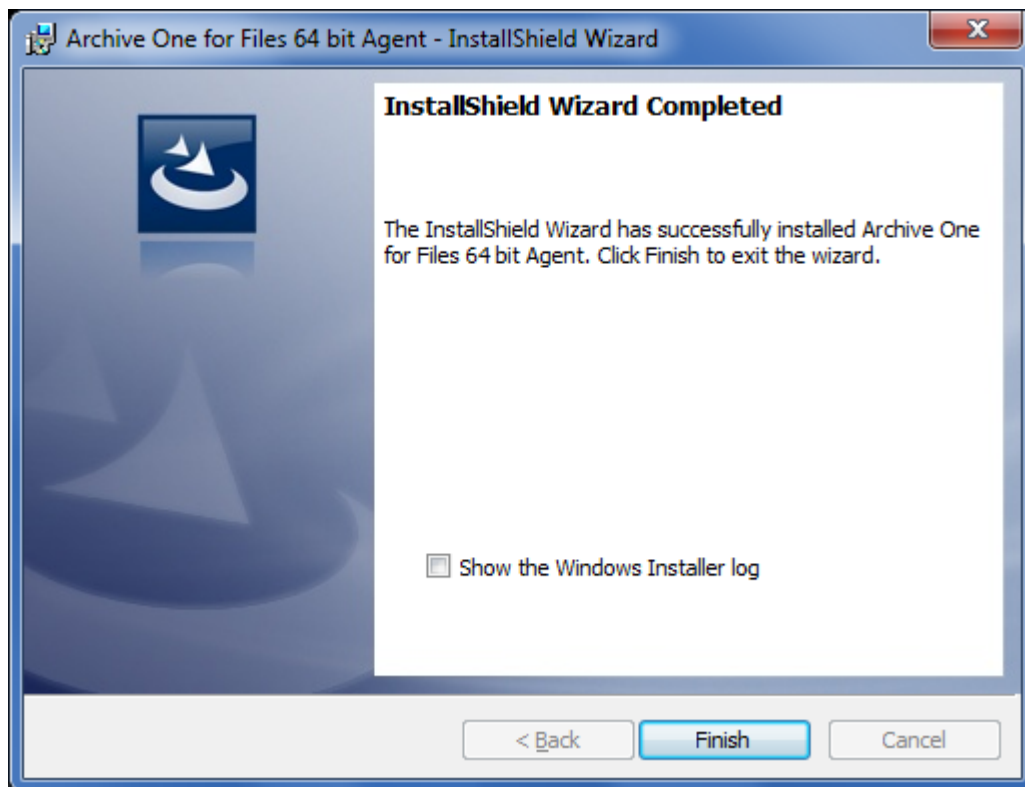
5. Click **Next**. In the **ArchiveOne DPS Server** page, enter the name of the dedicated Archive Server in the **Server Name** field:



6. Click **Next**. The **Installation** page displays:



7. Click **Install**. Once the installation is complete, click **Finish**:



Continue with [Step 2 - Configure ArchiveOne for Files Licensing](#).



## Figures

1. Singlex64\_deploy04.png
2. single\_install01.png
3. single\_install02.png
4. single\_install03.png
5. single\_install04.png
6. single\_install05.png
7. single\_install06.png
8. x64Install01.png
9. x64Install02.png
10. x64Install03.png
11. x64Install04.png
12. x64Install05.png
13. x64Install06.png
14. x64Install07.png

© Barracuda Networks Inc., 2024 The information contained within this document is confidential and proprietary to Barracuda Networks Inc. No portion of this document may be copied, distributed, publicized or used for other than internal documentary purposes without the written consent of an official representative of Barracuda Networks Inc. All specifications are subject to change without notice. Barracuda Networks Inc. assumes no responsibility for any inaccuracies in this document. Barracuda Networks Inc. reserves the right to change, modify, transfer, or otherwise revise this publication without notice.