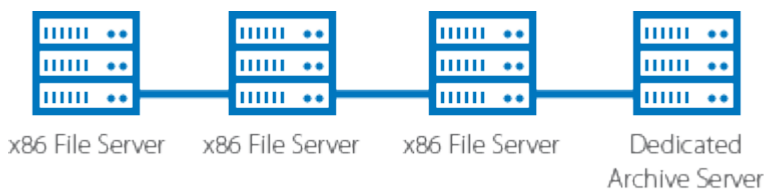


Multiple x86-Based File Servers with Dedicated Archive Server

<https://campus.barracuda.com/doc/49053826/>

This section refers to the Barracuda ArchiveOne for Files version 7.2.0 and higher.

Use this installation if you have multiple x86-based file servers and wish to install the Agent on a separate Archive Server:

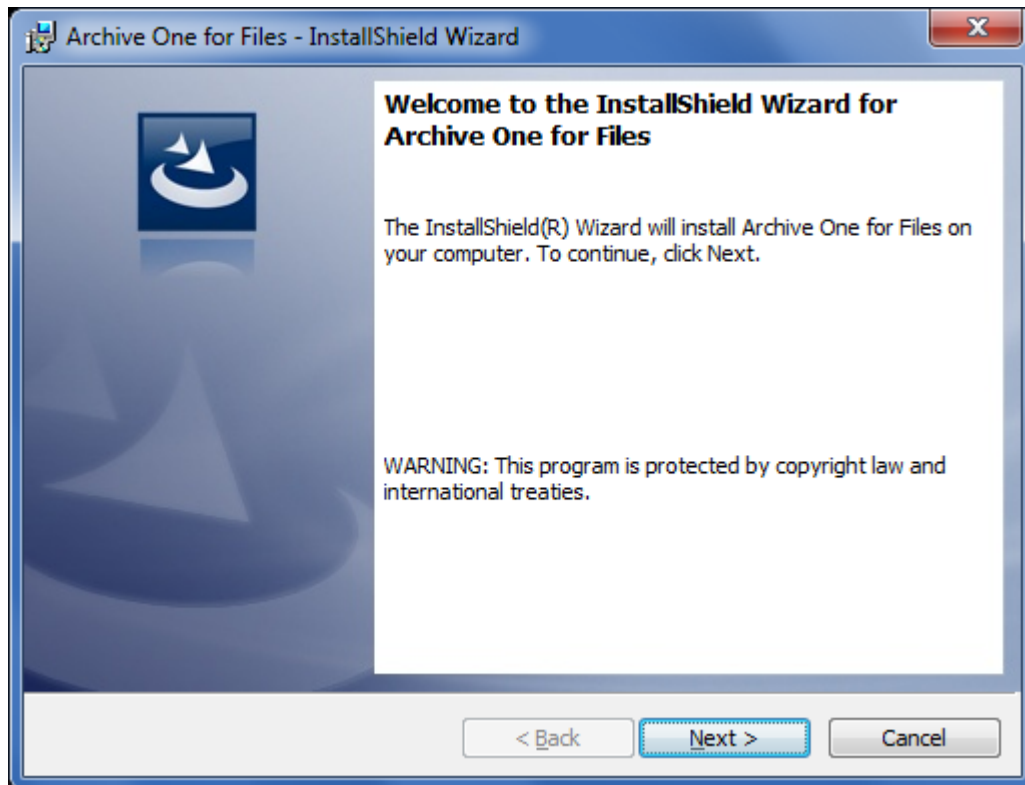


For other installation options, see [ArchiveOne for Files Installation Options](#).

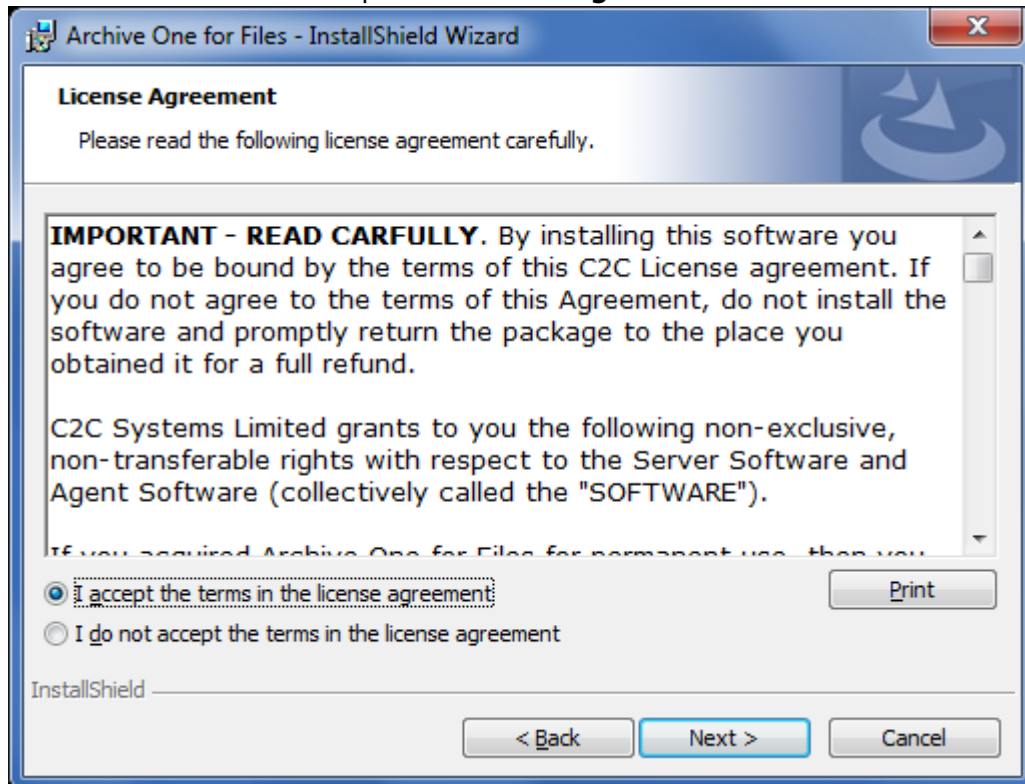
Step 1. Install Main Application

Complete the following steps on *each* file server in your environment.

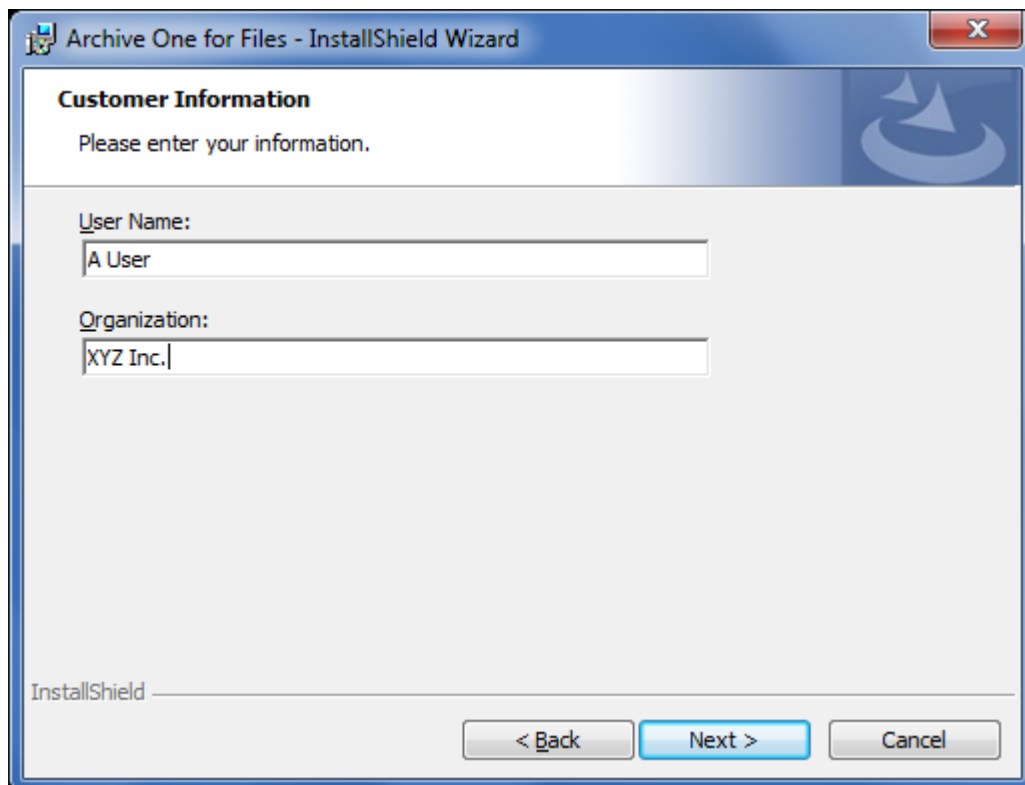
1. Log in to the Archive Server as the administrator, and run **ArchiveOneForFiles.exe**; the installation wizard displays:



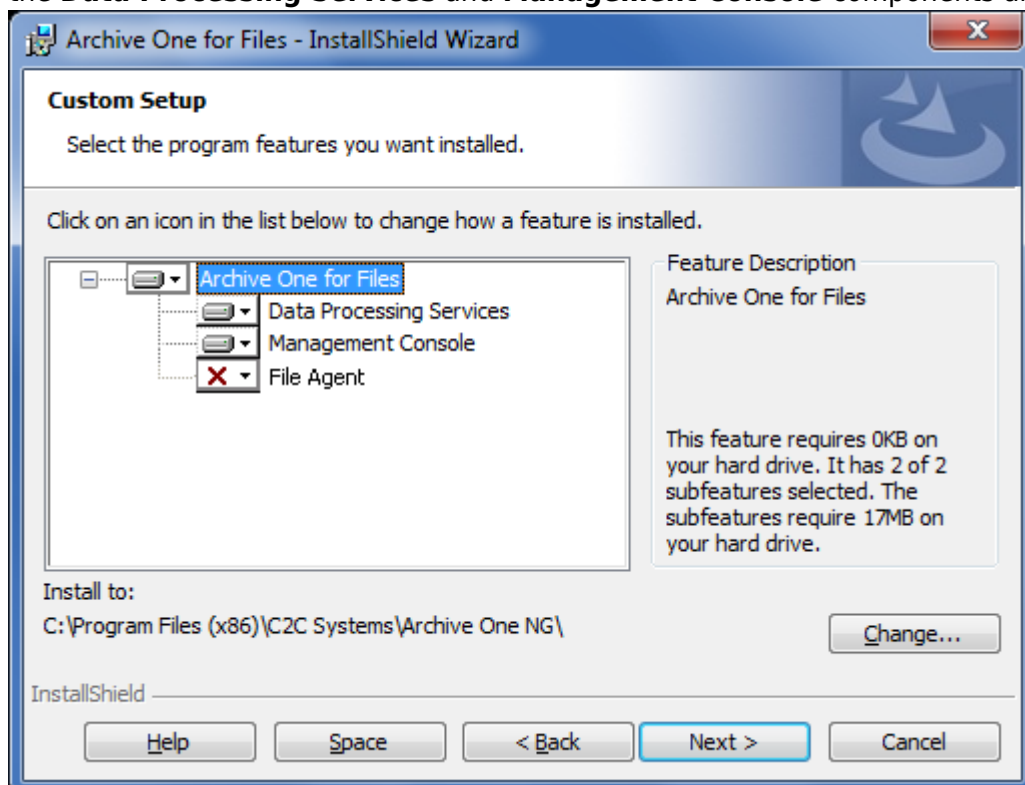
2. Click **Next**. Read and accept the **License Agreement**:



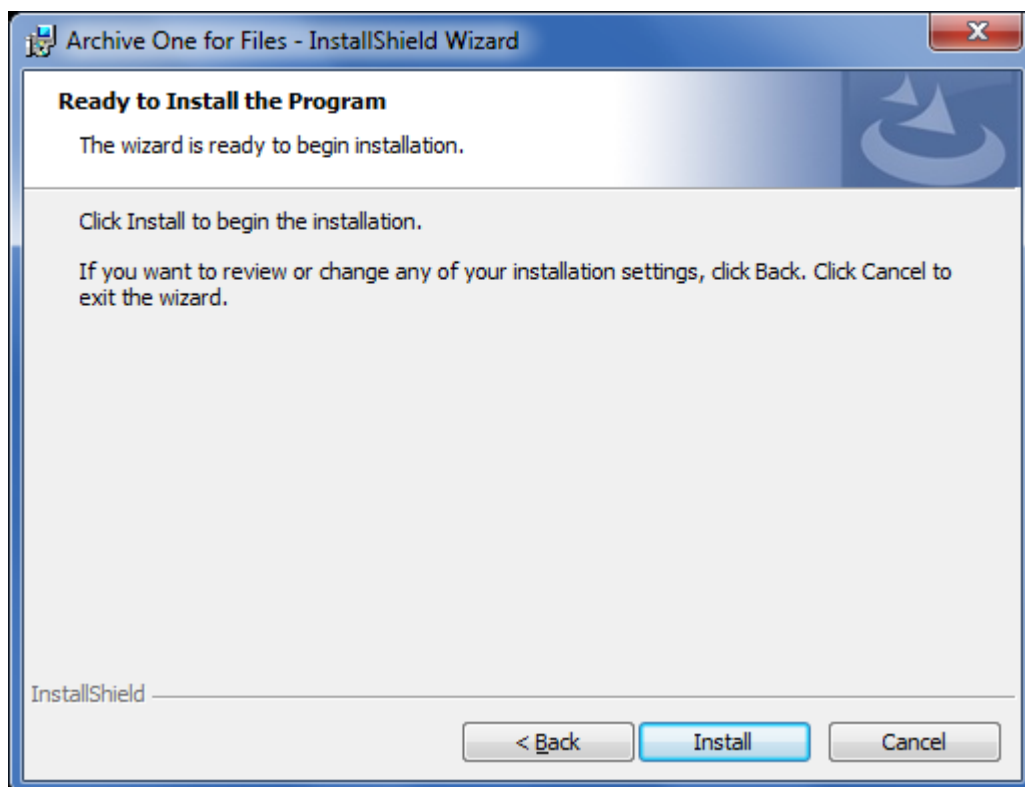
3. Click **Next**. In the **Customer Information** page, enter the **User Name** and **Organization** name:



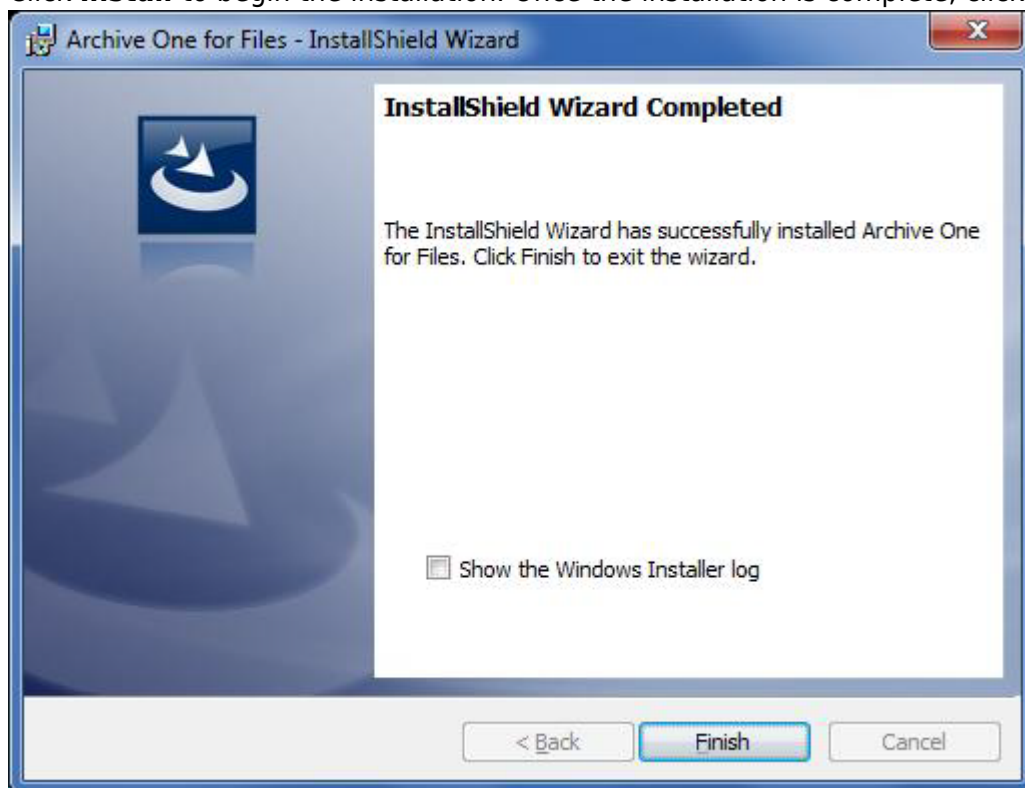
4. Click **Next**. The **Custom Setup** page displays. Clear the **File Agent** component so that only the **Data Processing Services** and **Management Console** components are selected:



5. Click **Next**. The **Read to Install the Program** page displays:

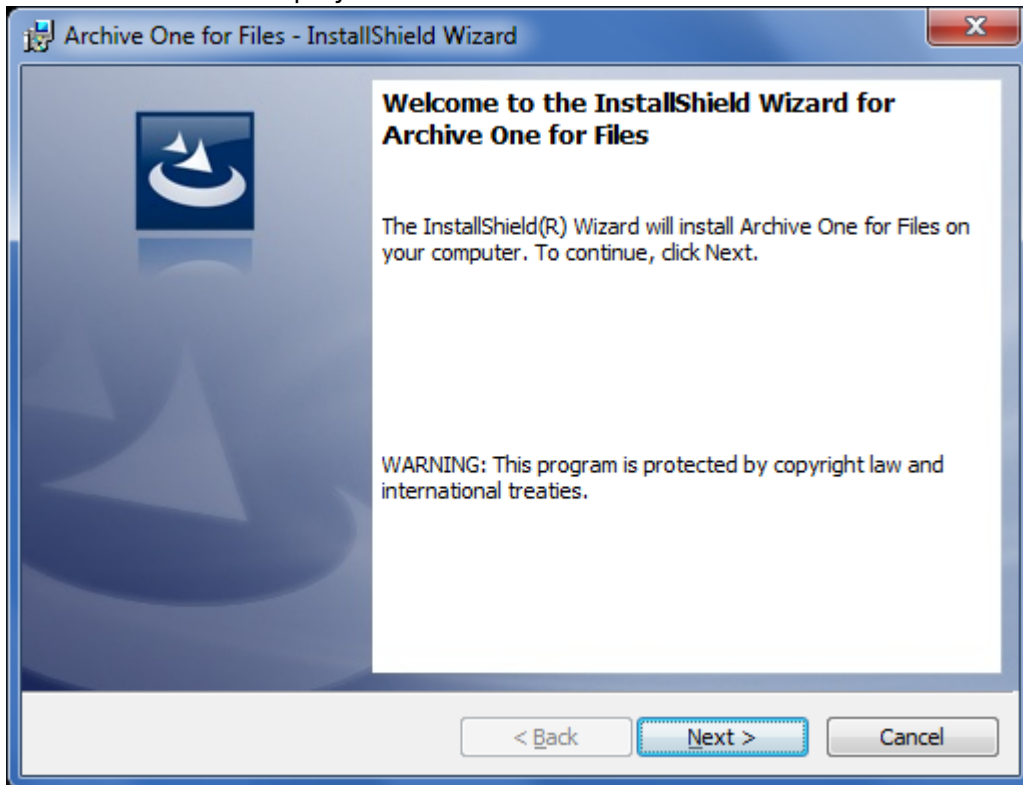


6. Click **Install** to begin the installation. Once the installation is complete, click **Finish**:

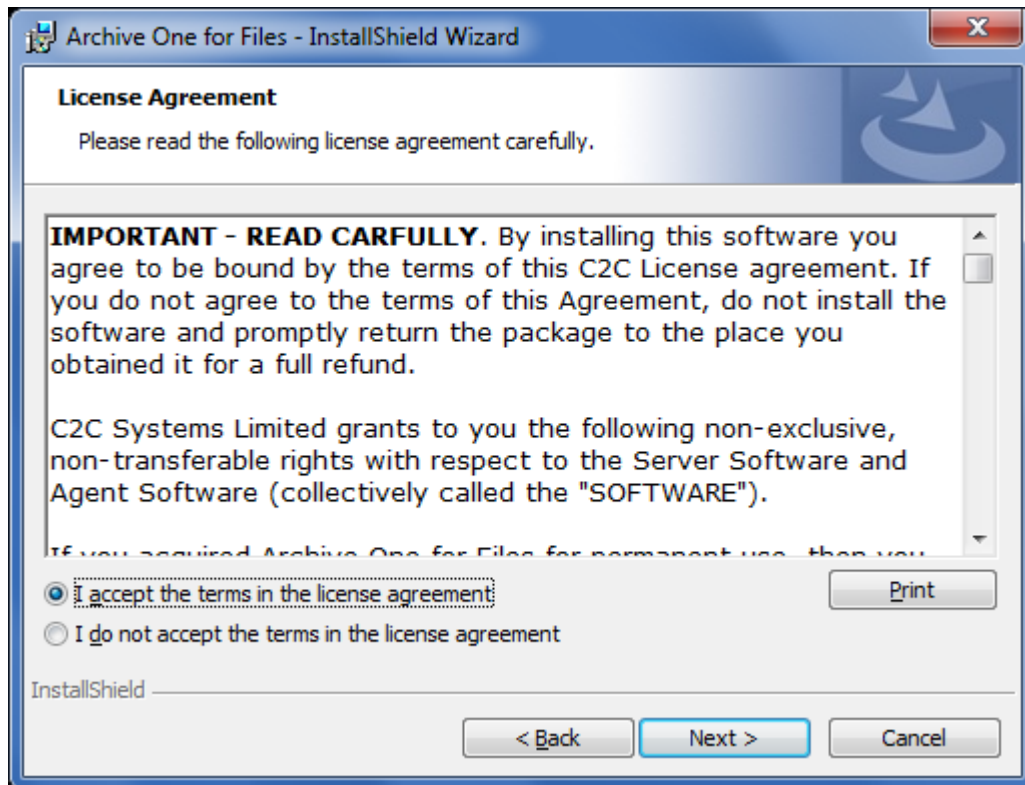


Step 2. Install Agent on x86-Based File Server

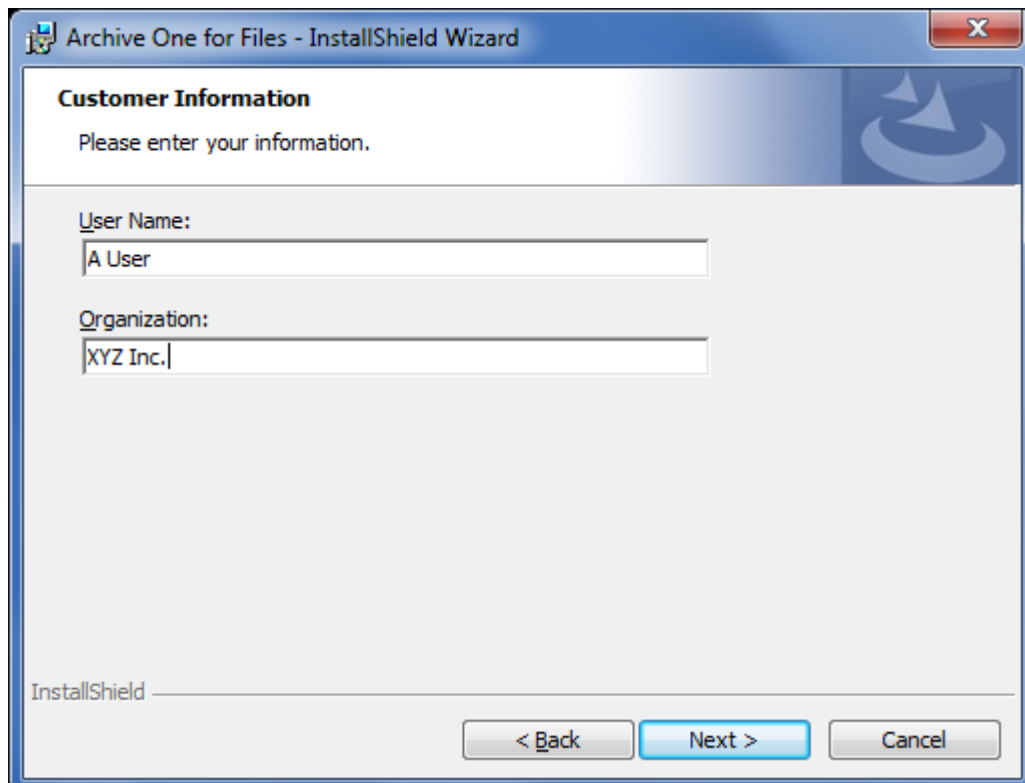
1. Log in to the x86-based file server as the administrator, and run **ArchiveOneForFiles.exe**; the installation wizard displays:



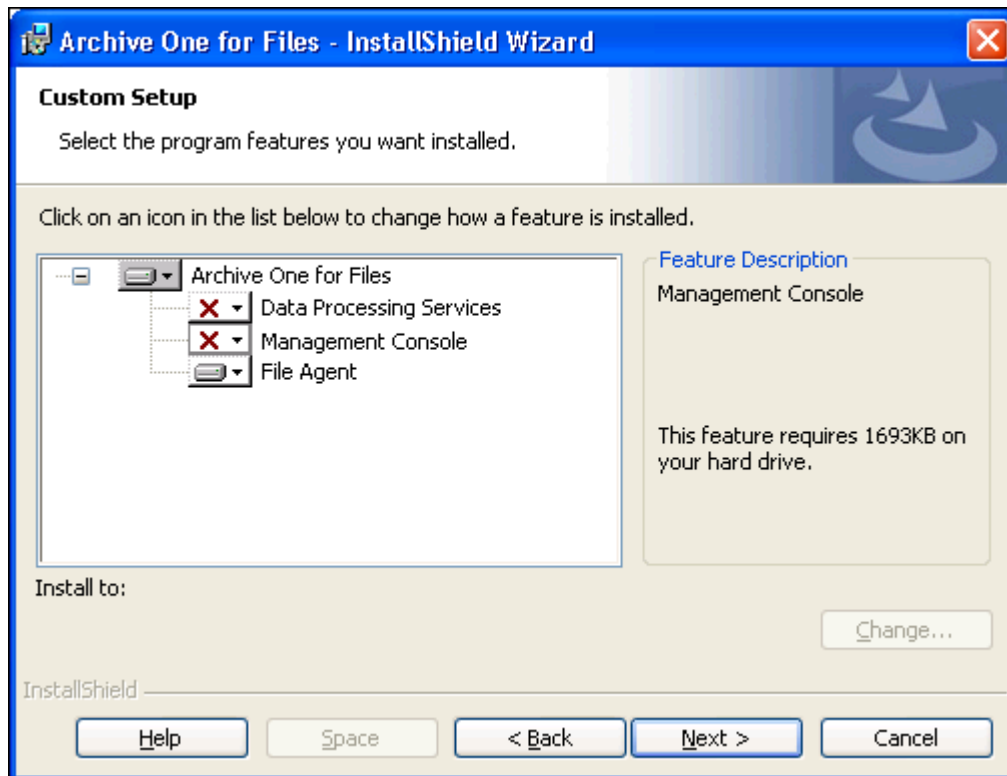
2. Click **Next**. Read and accept the **License Agreement**:



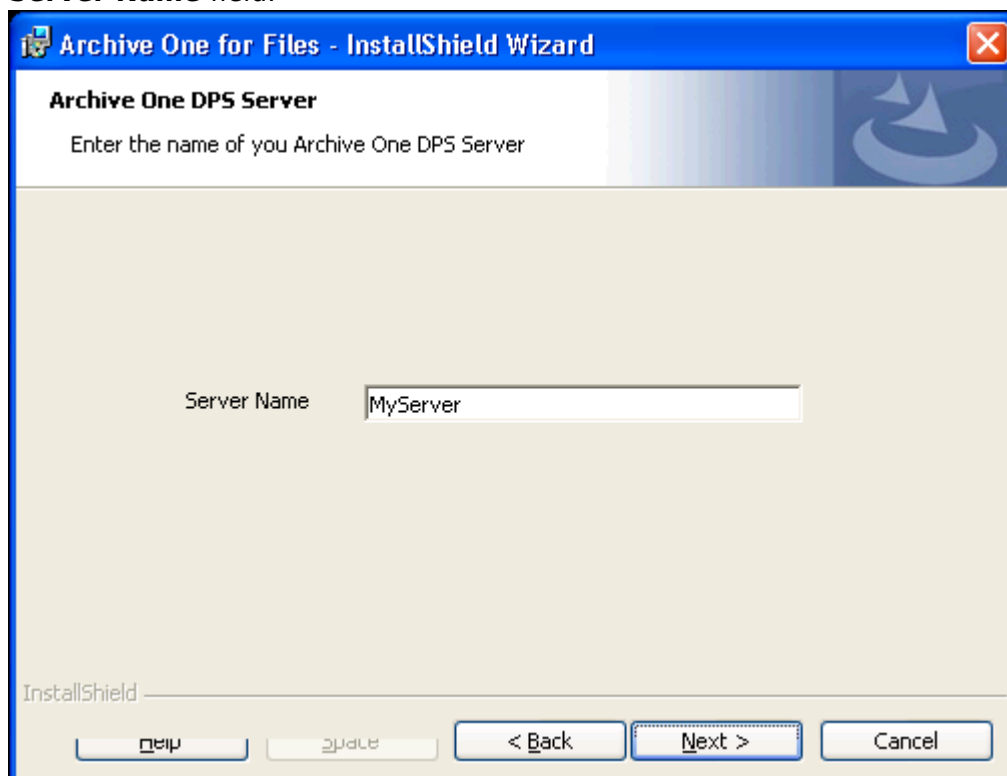
3. Click **Next**. In the **Customer Information** page, enter the **User Name** and **Organization** name:



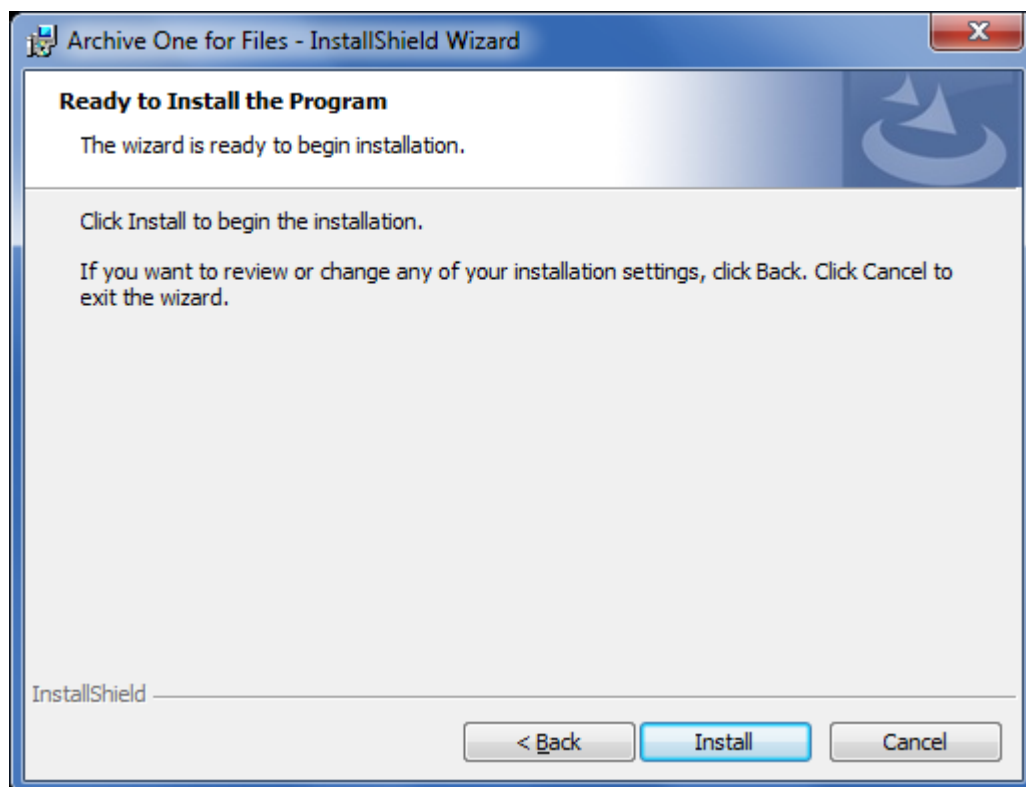
4. Click **Next**. The **Custom Setup** page displays. Clear the **Data Processing Services** and **Management Console** components, and select **Files Agent**:



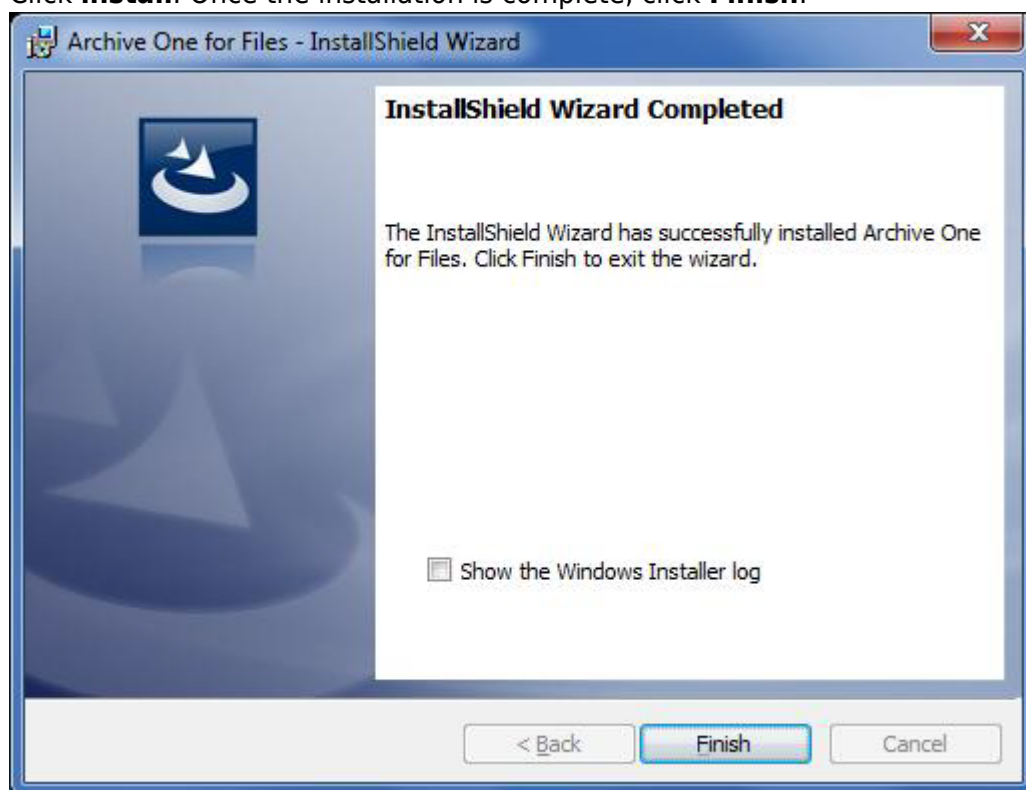
5. Click **Next**. In the **ArchiveOne DPS Server** page, enter the name of your Archive Server in the **Server Name** field:



6. Click **Next**. The **Installation** page displays:



7. Click **install**. Once the installation is complete, click **Finish**:



Continue with [Step 2 - Configure ArchiveOne for Files Licensing](#).

Figures

1. Multix86_deploy06.png
2. single_install01.png
3. single_install02.png
4. single_install03.png
5. deselect_agent.png
6. single_install05.png
7. single_install06.png
8. single_install01.png
9. single_install02.png
10. single_install03.png
11. x86agent01.png
12. x86agent02.png
13. x86agent03.png
14. x86agent04.png

© Barracuda Networks Inc., 2024 The information contained within this document is confidential and proprietary to Barracuda Networks Inc. No portion of this document may be copied, distributed, publicized or used for other than internal documentary purposes without the written consent of an official representative of Barracuda Networks Inc. All specifications are subject to change without notice. Barracuda Networks Inc. assumes no responsibility for any inaccuracies in this document. Barracuda Networks Inc. reserves the right to change, modify, transfer, or otherwise revise this publication without notice.