

Multiple x64-Based File Servers and File Agent Installation

<https://campus.barracuda.com/doc/49053960/>

This section refers to the Barracuda ArchiveOne for Files version 7.2.0 and higher.

Use this installation if you have multiple x64-based file servers and wish to install Barracuda ArchiveOne for Files on those x64-based file servers. In this installation, the Agent is installed on one of the x64-based file servers:

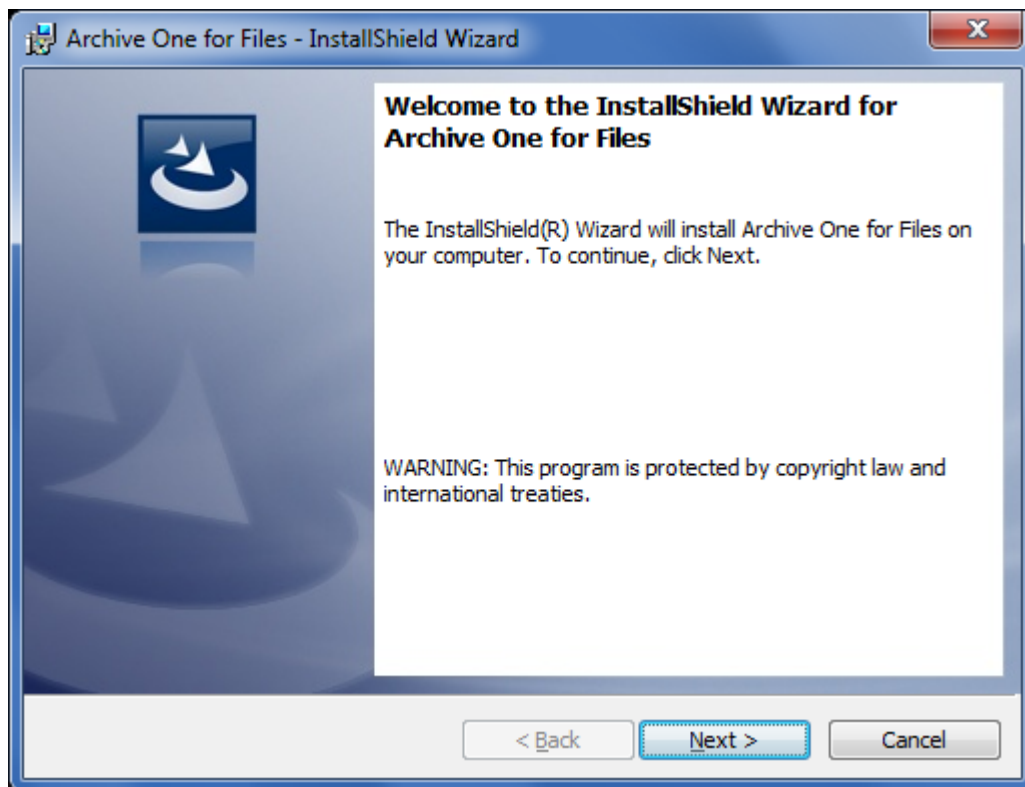


For other installation options, see [ArchiveOne for Files Installation Options](#).

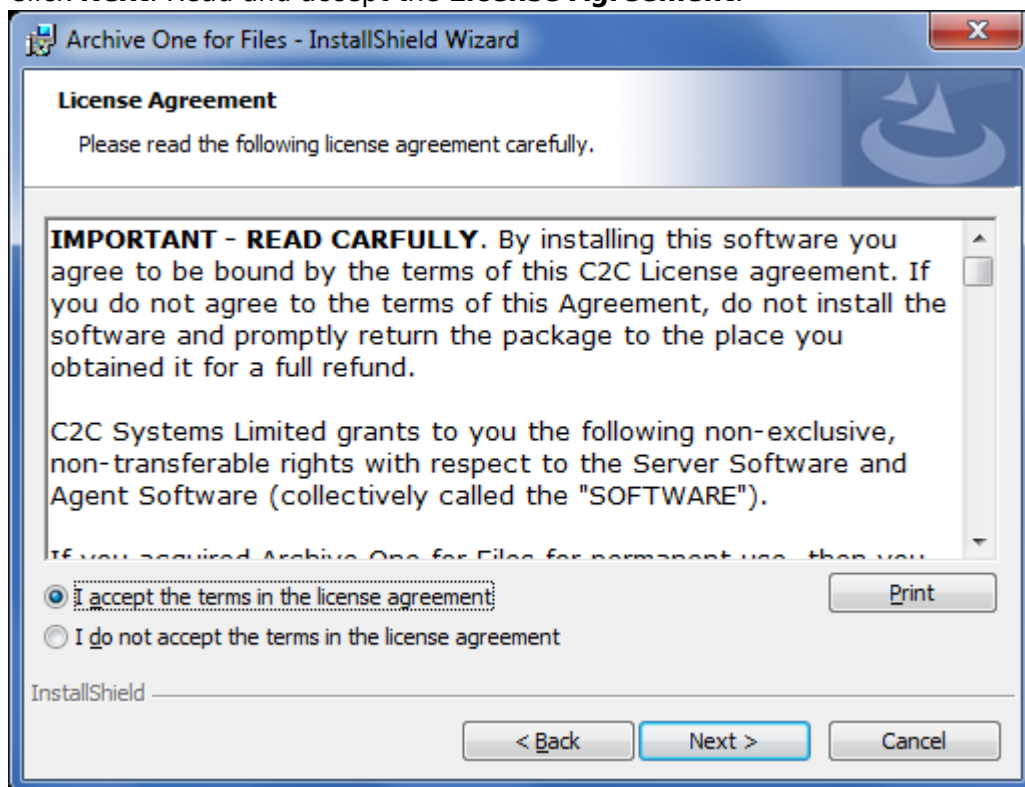
Step 1. Install Main Application

Complete the following steps on *each* x64-based file server in your environment.

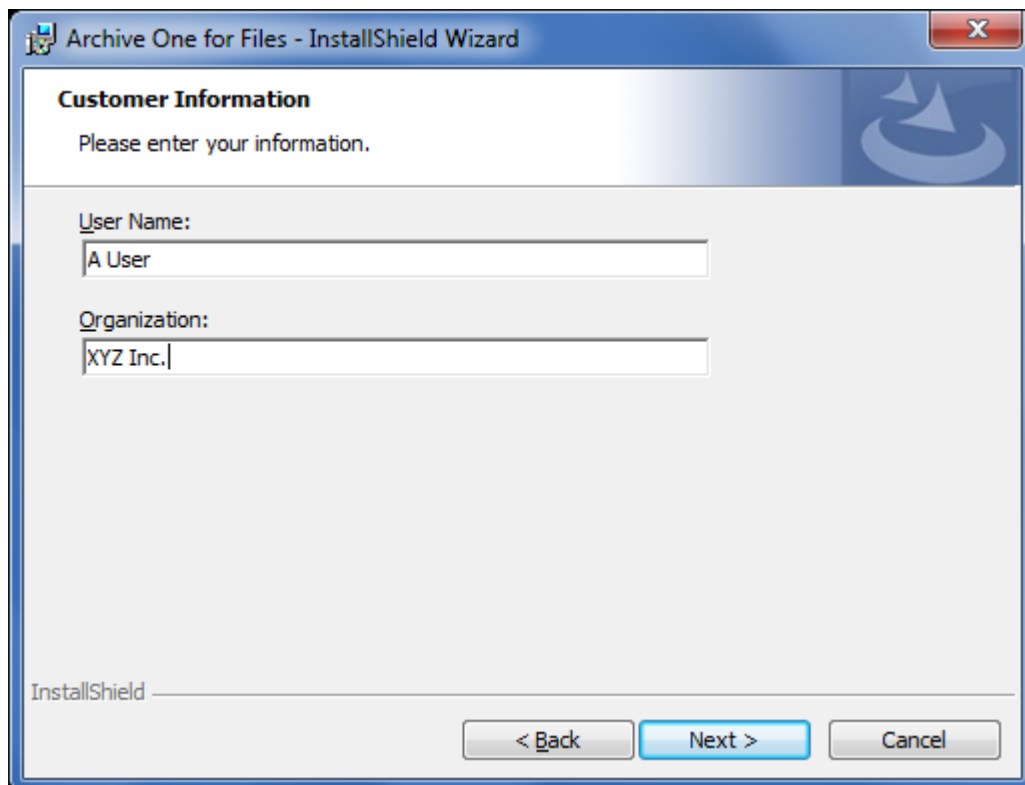
1. Log in to the Archive Server as the administrator, and run **ArchiveOneForFiles.exe**; the installation wizard displays:



2. Click **Next**. Read and accept the **License Agreement**:

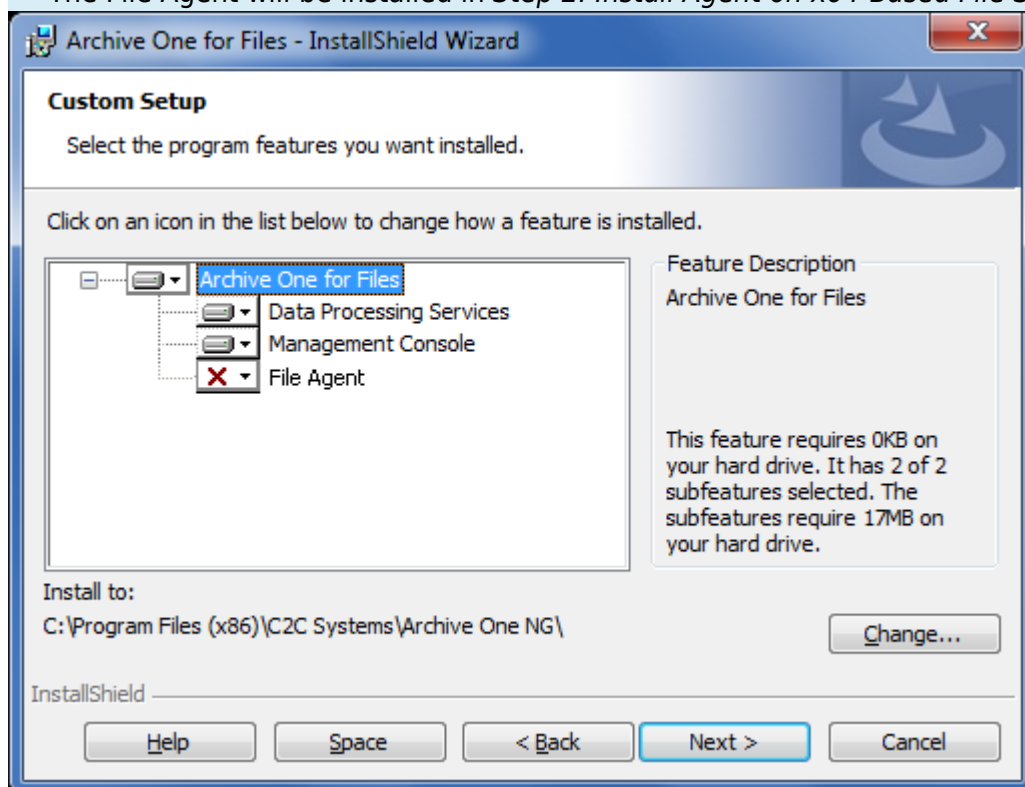


3. Click **Next**. In the **Customer Information** page, enter the **User Name** and **Organization** name:

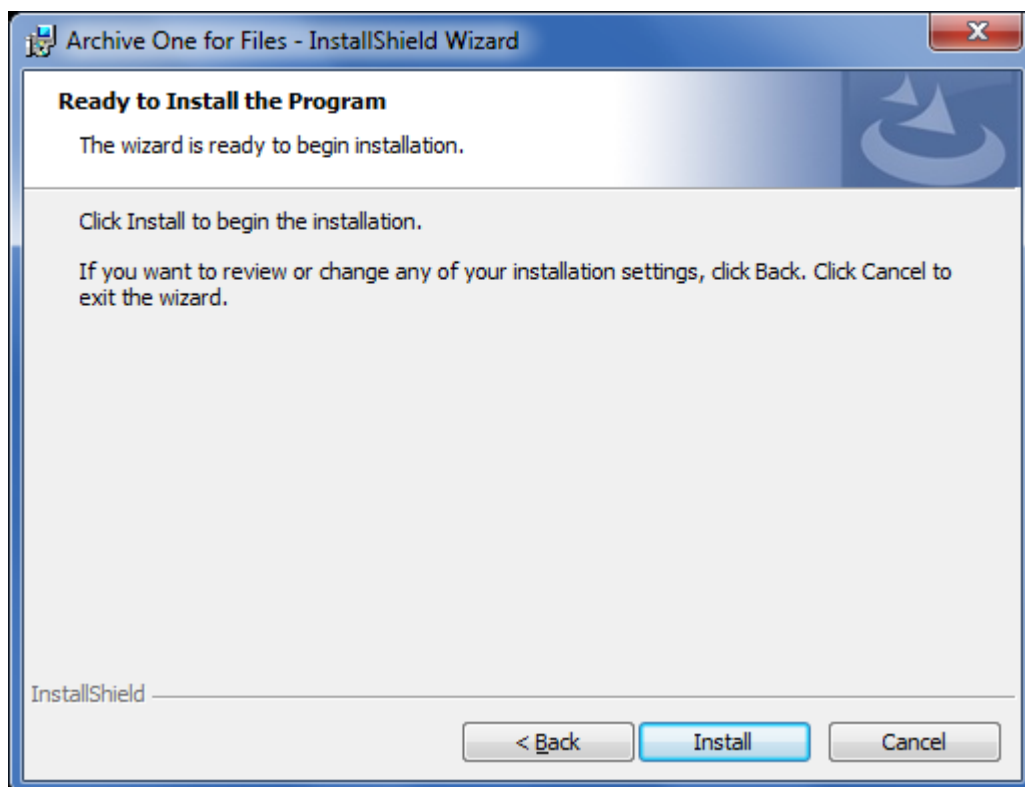


4. Click **Next**. The **Custom Setup** page displays. Clear the **File Agent** component so that only the **Data Processing Services** and **Management Console** components are selected:

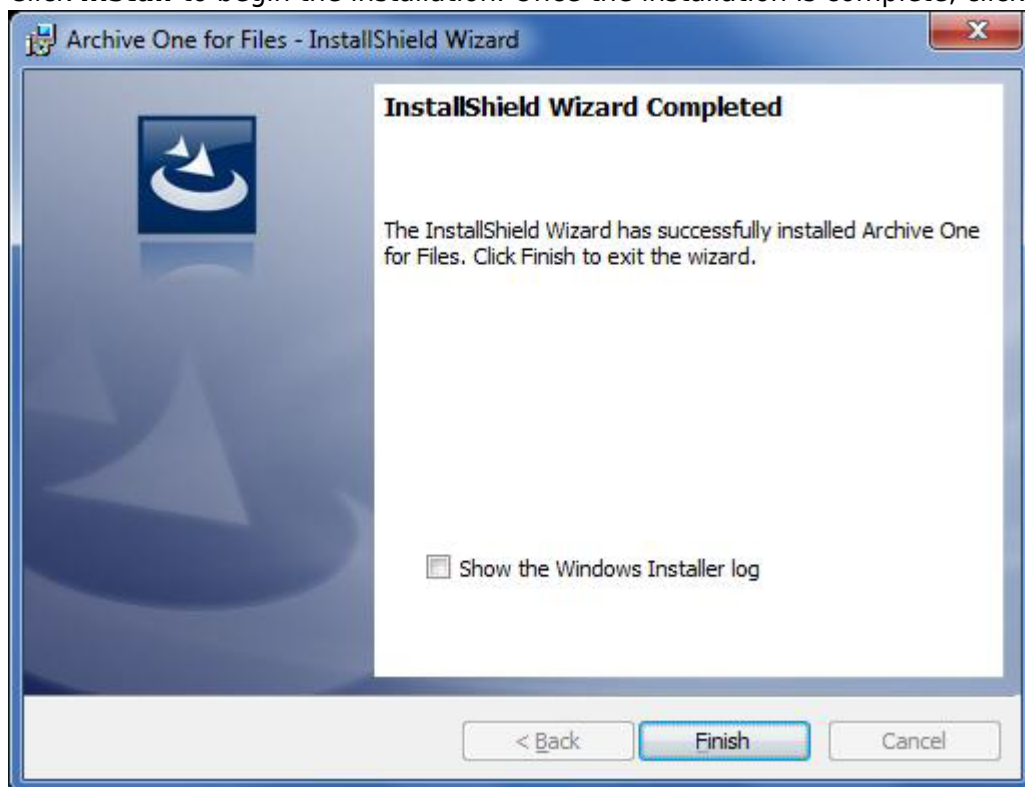
The File Agent will be installed in *Step 2. Install Agent on x64-Based File Server*.



5. Click **Next**. The **Installation** page displays:



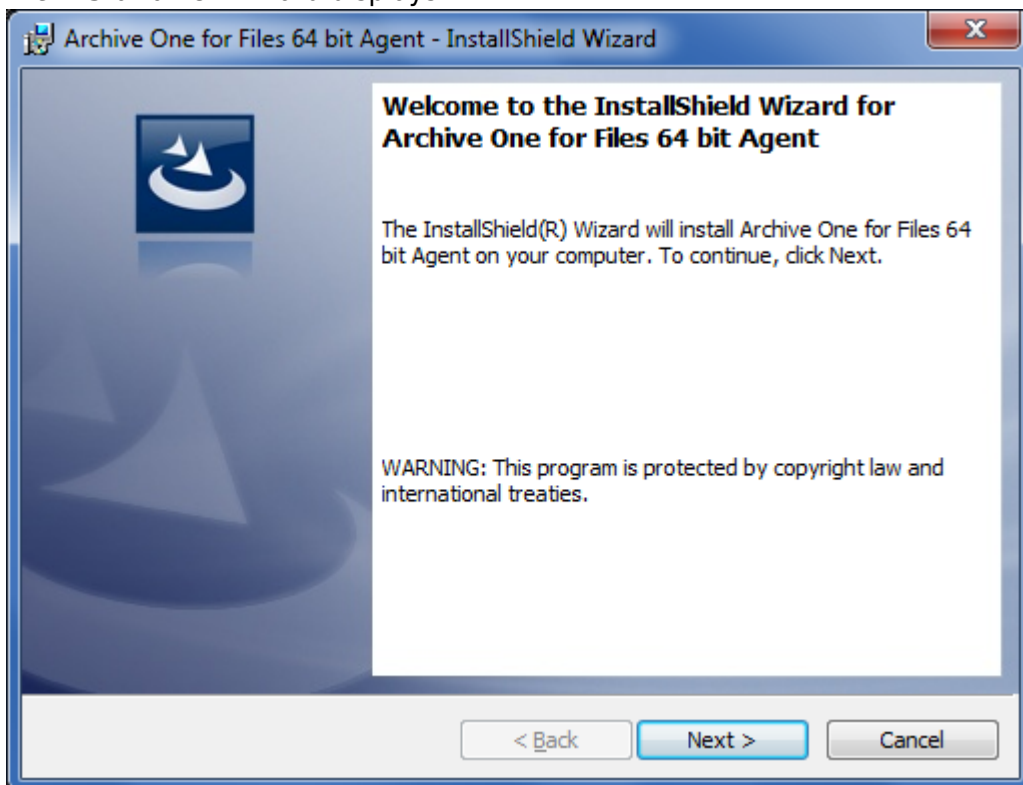
6. Click **Install** to begin the installation. Once the installation is complete, click **Finish**:



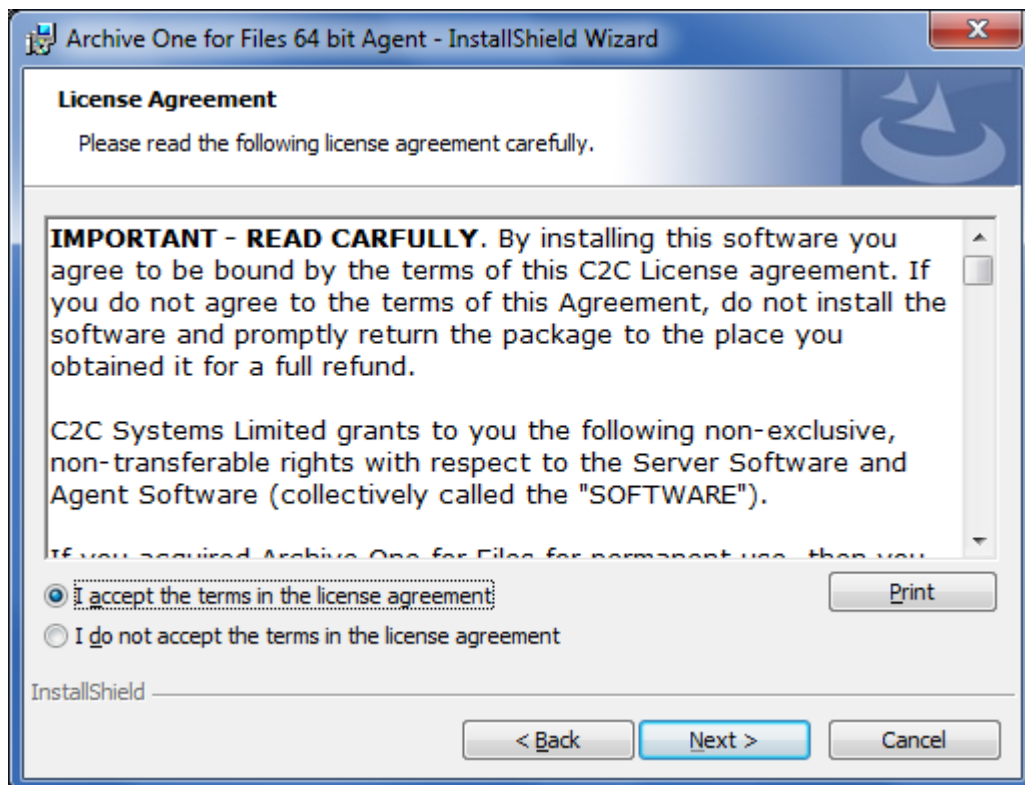
Step 2. Install Agent on x64-Based File Server

Complete this step on the x64-based file server from *Step 1. Install Main Application* where you want to install the Agent.

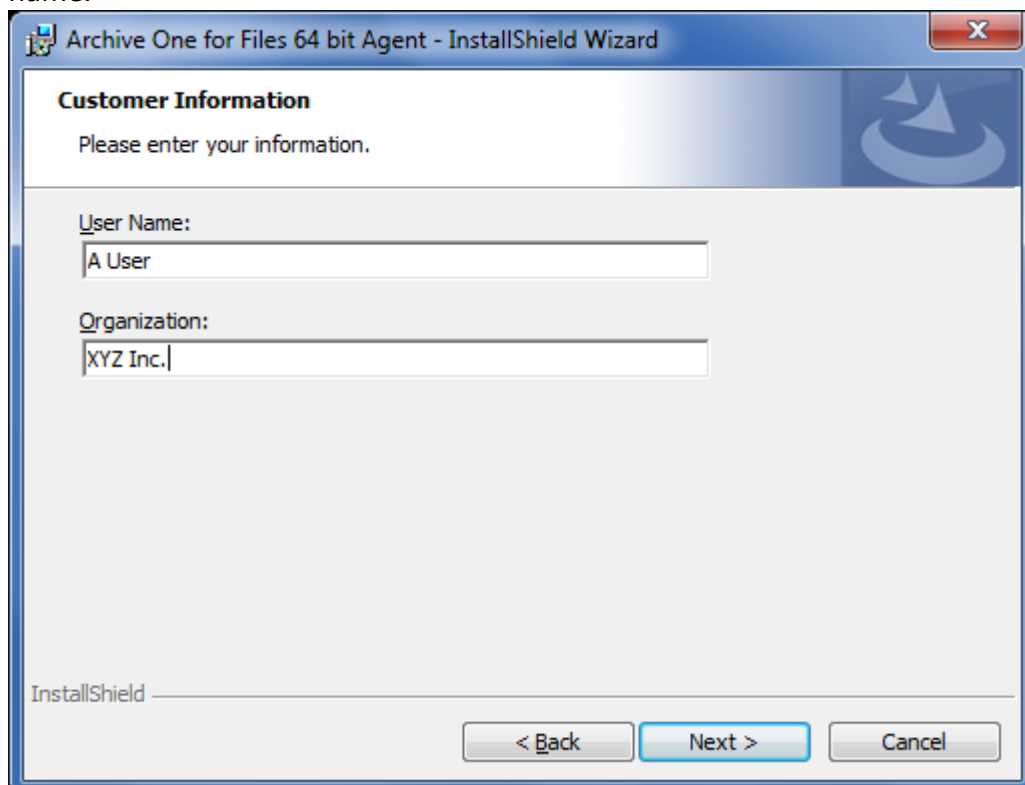
1. Log in to the x64-based file server as the administrator, and run **ArchiveOneForFiles64.exe**; the **Installation** wizard displays:



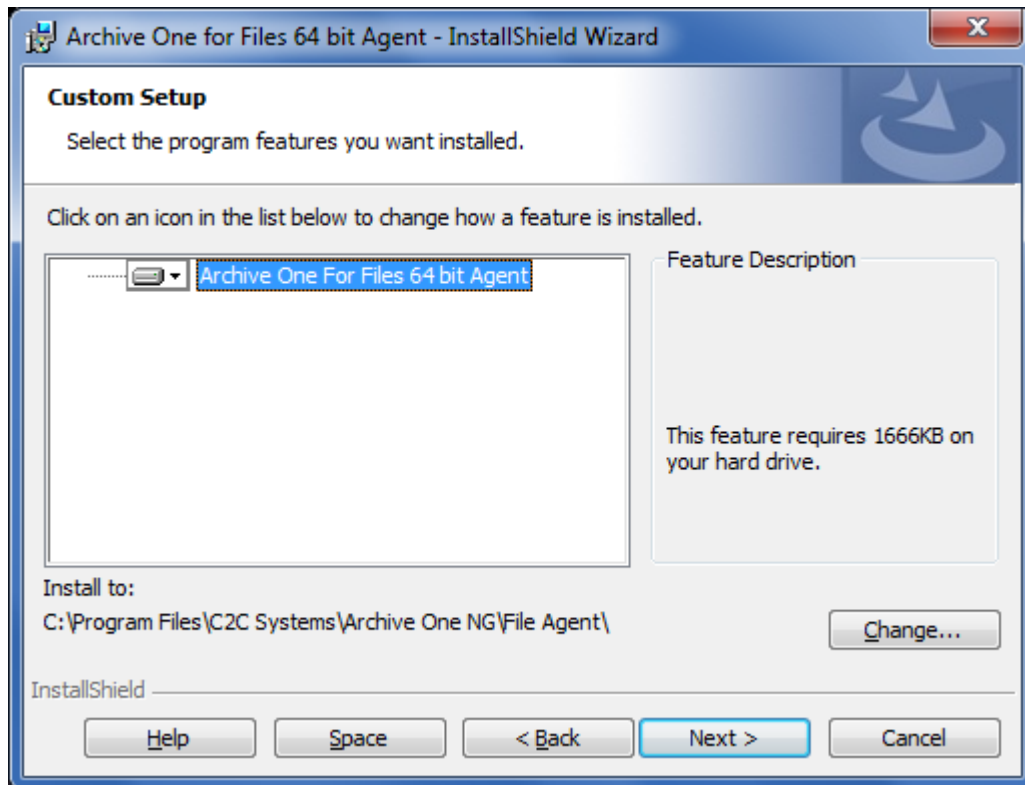
2. Click **Next**. Read and accept the **License Agreement**:



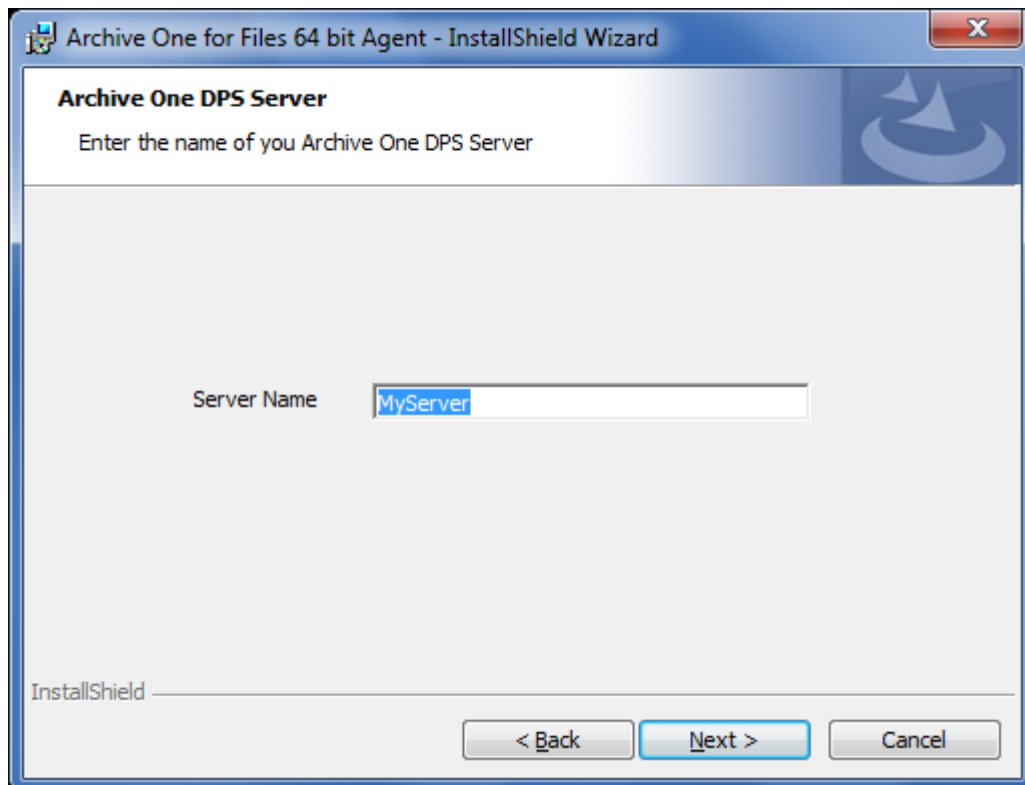
3. Click **Next**. In the **Customer Information** page, enter the **User Name** and **Organization** name:



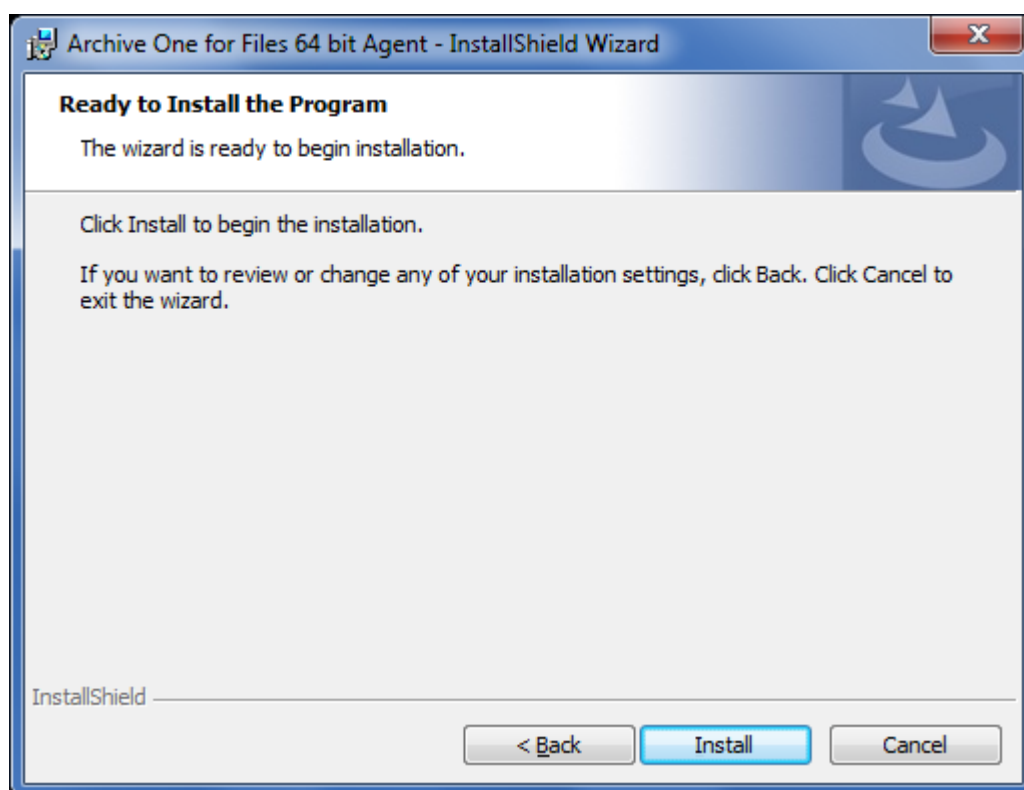
4. Click **Next**. The **Custom Setup** dialog displays:



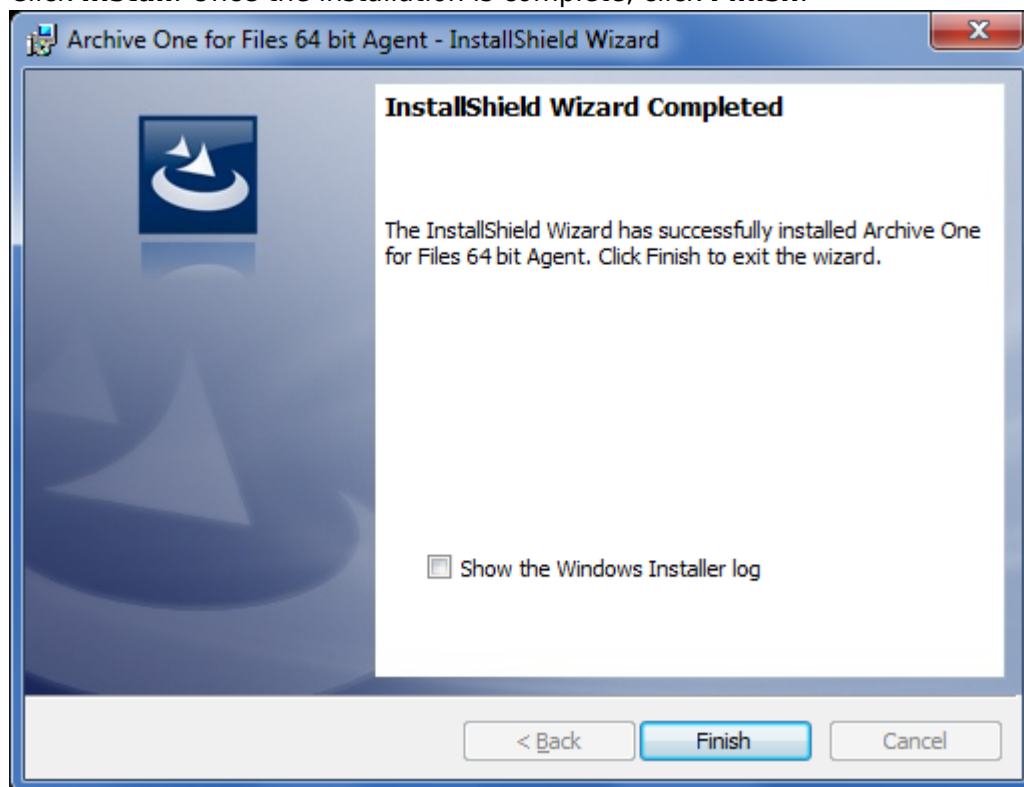
5. Click **Next**. In the **ArchiveOne DPS Server** page, in the **Server Name** field, enter the name of the file server:



6. Click **Next**. The **Installation** page displays:



7. Click **Install**. Once the installation is complete, click **Finish**:



Continue with [Step 2 - Configure ArchiveOne for Files Licensing](#).

Figures

1. Multix64_deploy07.png
2. single_install01.png
3. single_install02.png
4. single_install03.png
5. deselect_agent.png
6. single_install05.png
7. single_install06.png
8. x64Install01.png
9. x64Install02.png
10. x64Install03.png
11. x64Install04.png
12. x64Install05.png
13. x64Install06.png
14. x64Install07.png

© Barracuda Networks Inc., 2024 The information contained within this document is confidential and proprietary to Barracuda Networks Inc. No portion of this document may be copied, distributed, publicized or used for other than internal documentary purposes without the written consent of an official representative of Barracuda Networks Inc. All specifications are subject to change without notice. Barracuda Networks Inc. assumes no responsibility for any inaccuracies in this document. Barracuda Networks Inc. reserves the right to change, modify, transfer, or otherwise revise this publication without notice.