

## Step 2 - Configure ArchiveOne for Files Licensing

<https://campus.barracuda.com/doc/49054095/>

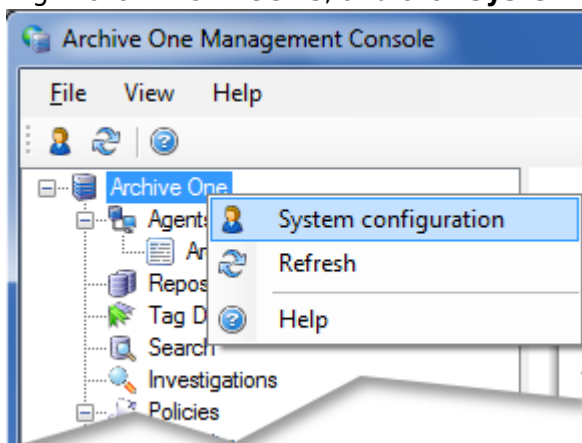
This section refers to the Barracuda ArchiveOne for Files version 7.2.0 and higher.

### Evaluation License

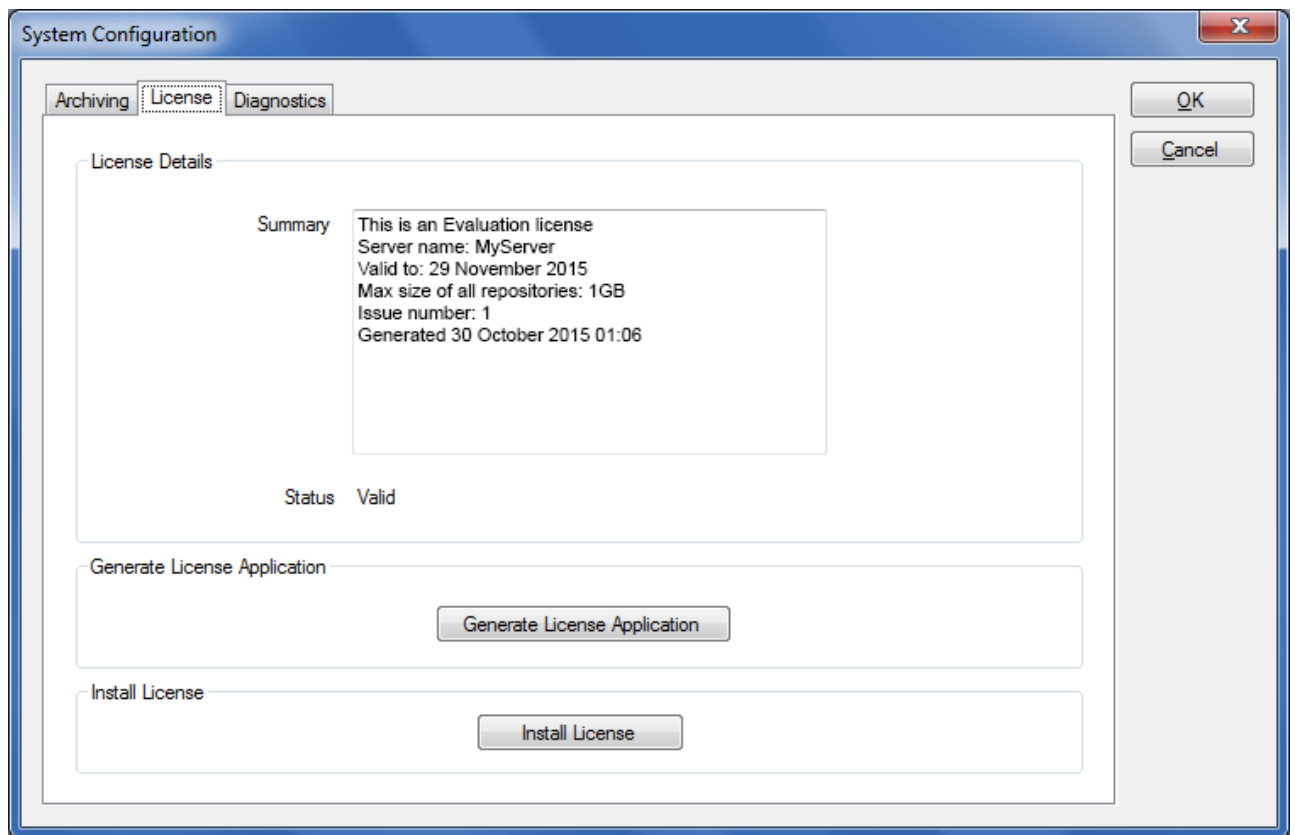
Once you successfully install ArchiveOne for Files the system automatically generates an evaluation license which allows you to use all the product features for a limited period of time. Note that the amount of data storage is restricted when using the evaluation license.

To view your current evaluation license details,

1. Start the ArchiveOne Management Console.
2. Right-click **ArchiveOne**, and click **System Configuration**:



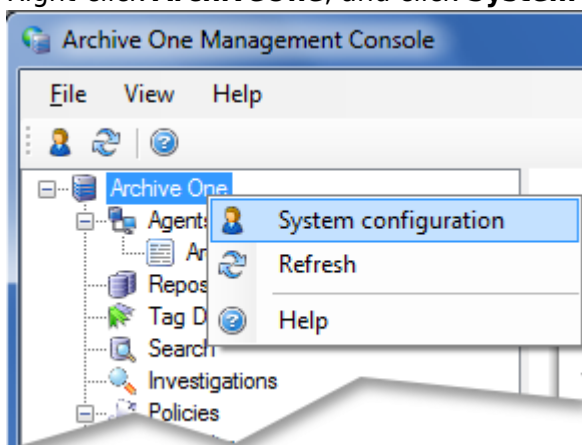
3. The **System Configuration** dialog displays. Click the **License** tab to view your current license details. For example:



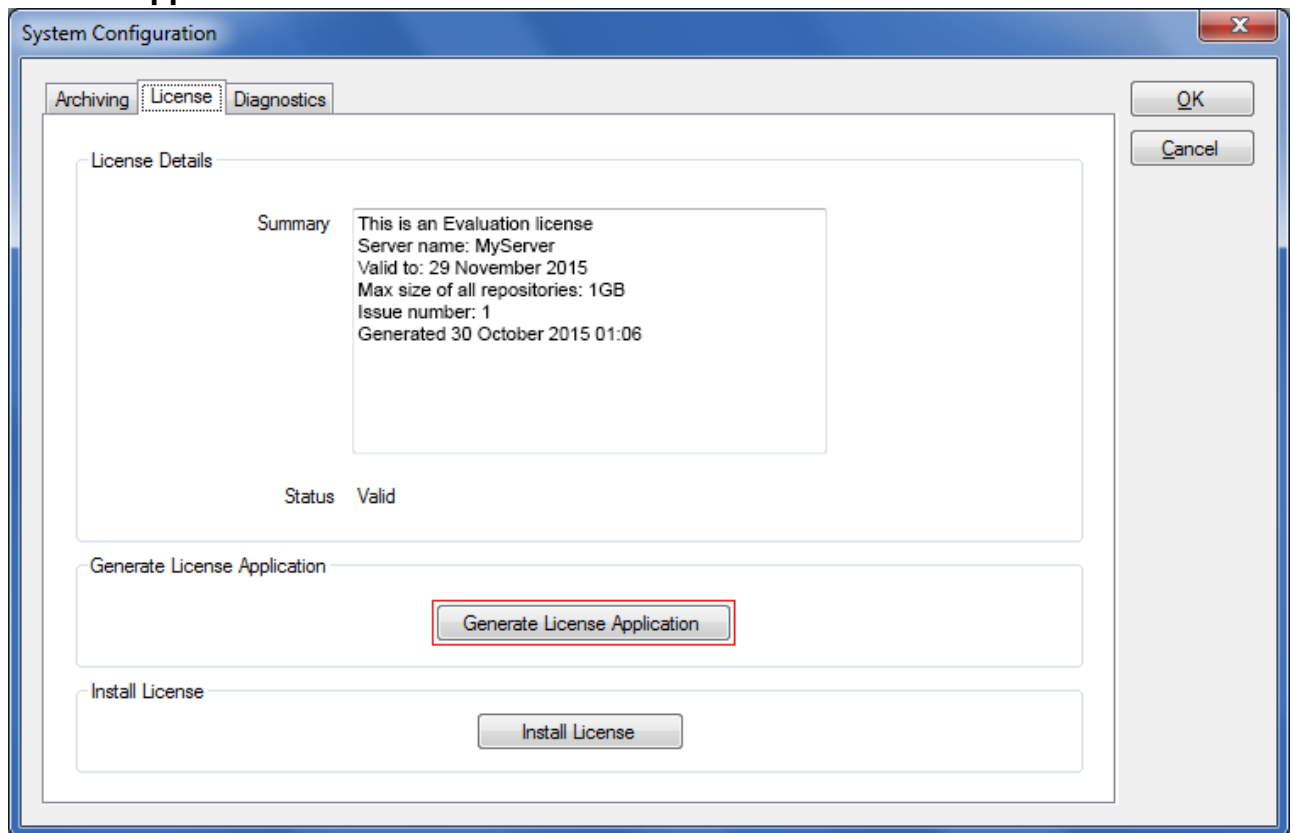
## Full License

To apply for a full license, you must generate a small file containing details about your server. To do so:

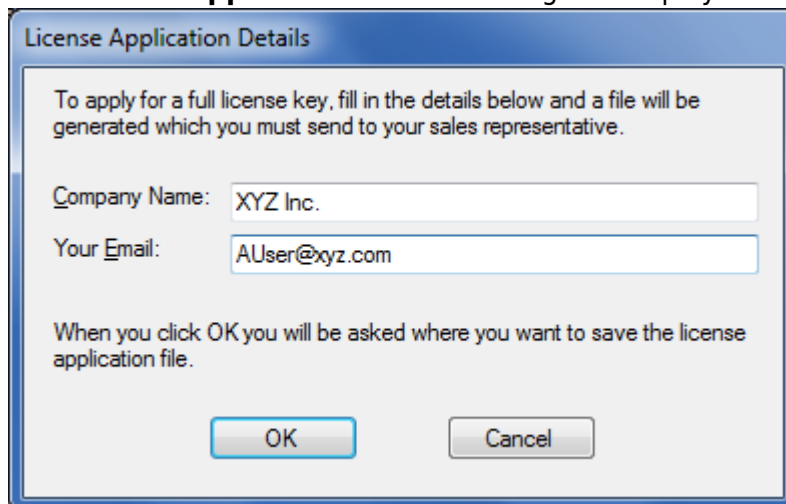
1. Start the ArchiveOne Management Console.
2. Right-click **ArchiveOne**, and click **System Configuration**:



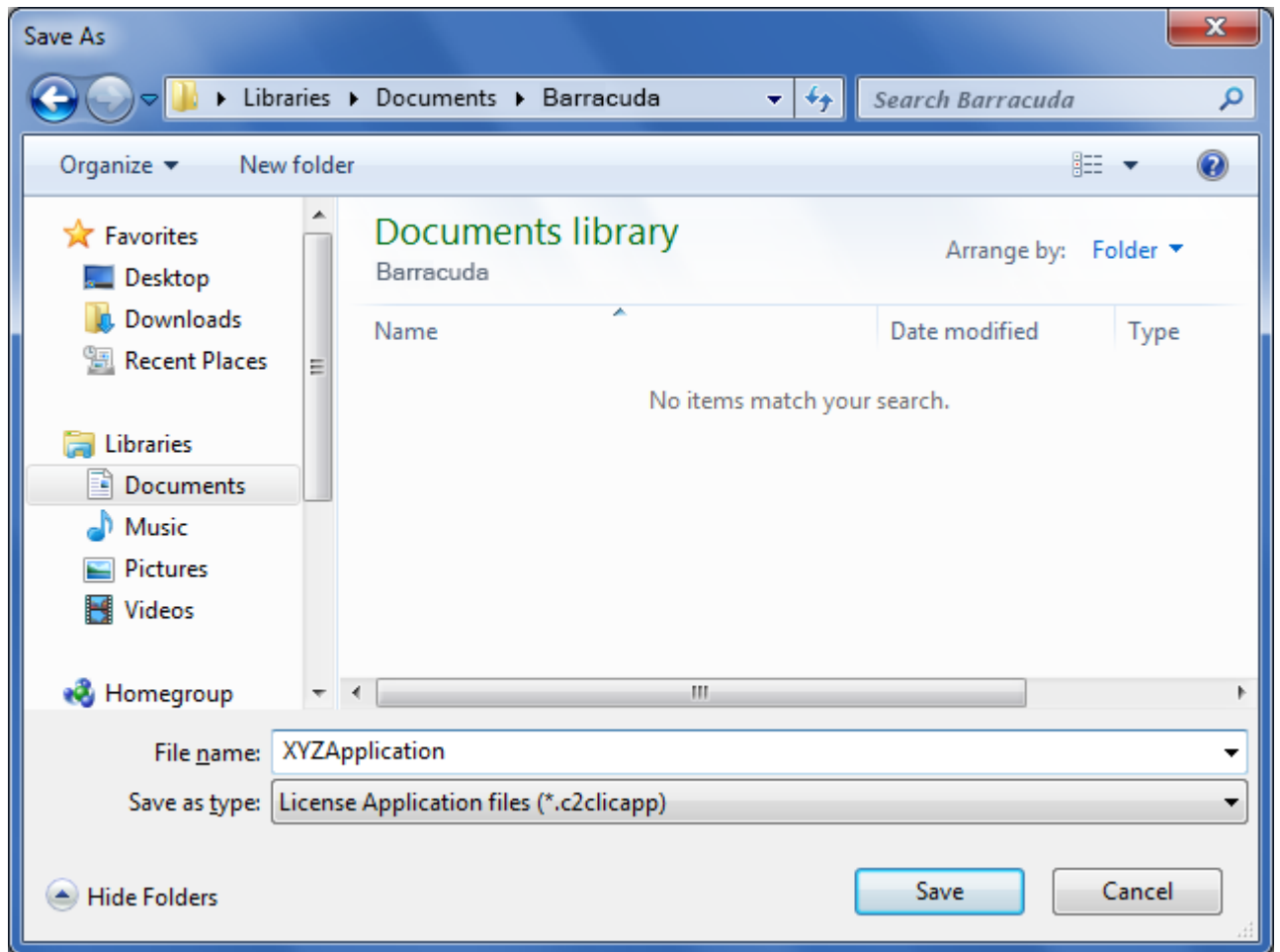
3. The **System Configuration** dialog displays. Click the **License** tab, and click **Generate**

**License Application:**

4. The **License Application Details** dialog box displays:



5. Enter your organization's name in the **Company Name** field, enter a contact email address in the **Your Email** field, and click **OK**.
6. Save the license application to a file name of your choice to the system. For example:

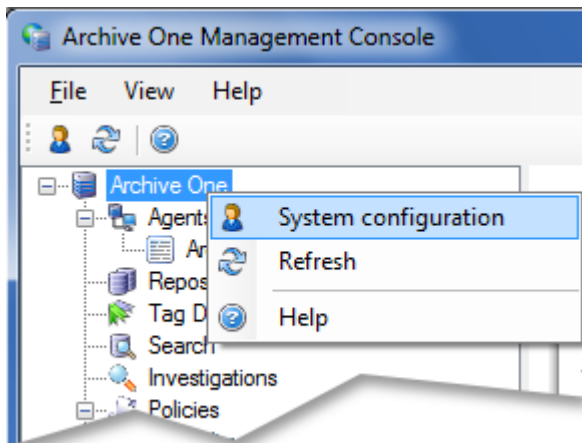


7. Send the license file to Barracuda for processing. Once processed, a full license key file is sent to you.

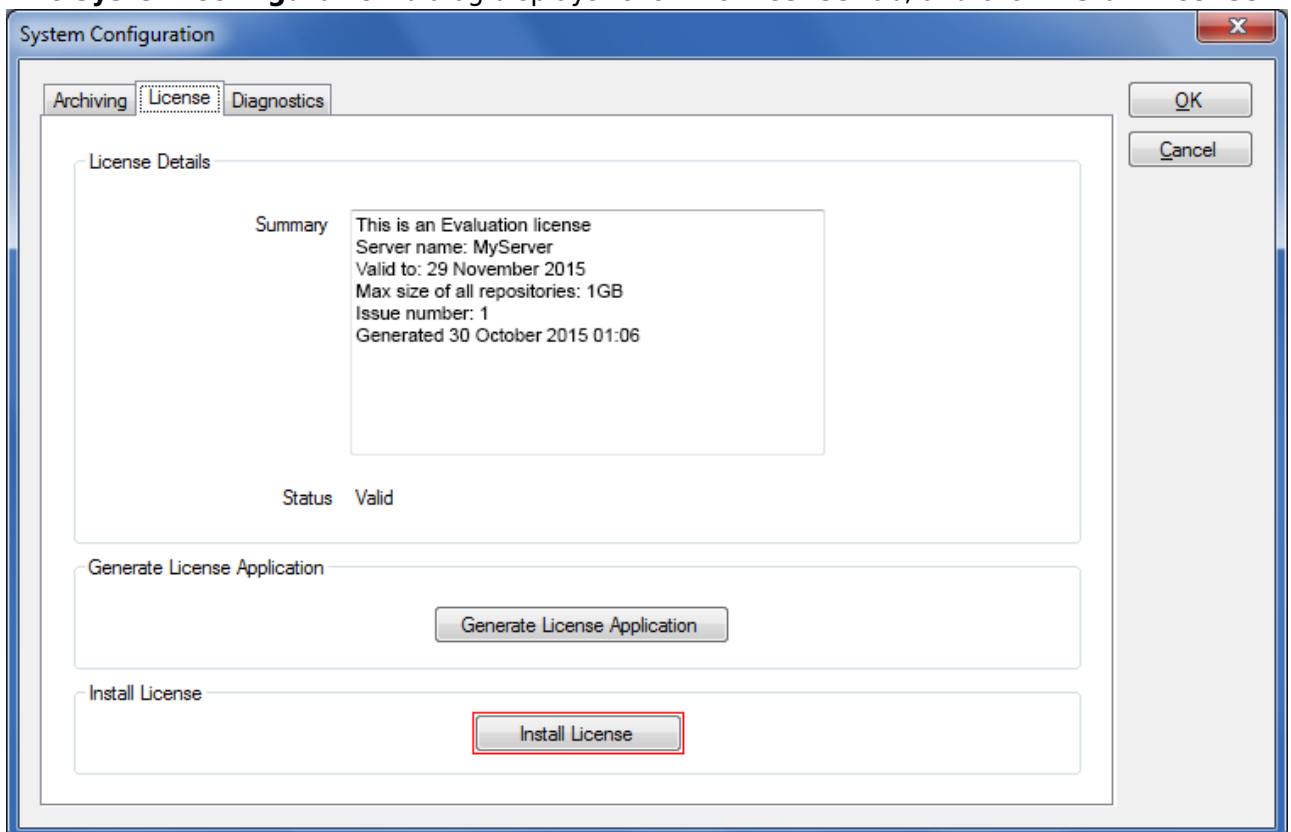
## Install New License

Once you receive your full license key file, use the following steps to install the new license:

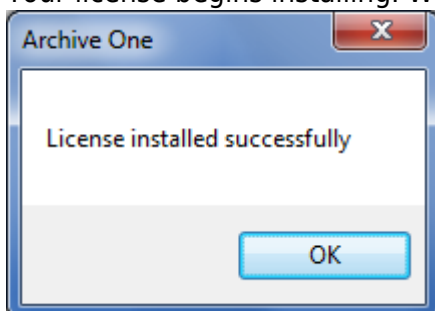
1. Save the license key file to your local system.
2. Start the ArchiveOne Management Console.
3. Right-click **ArchiveOne**, and click **System Configuration**:



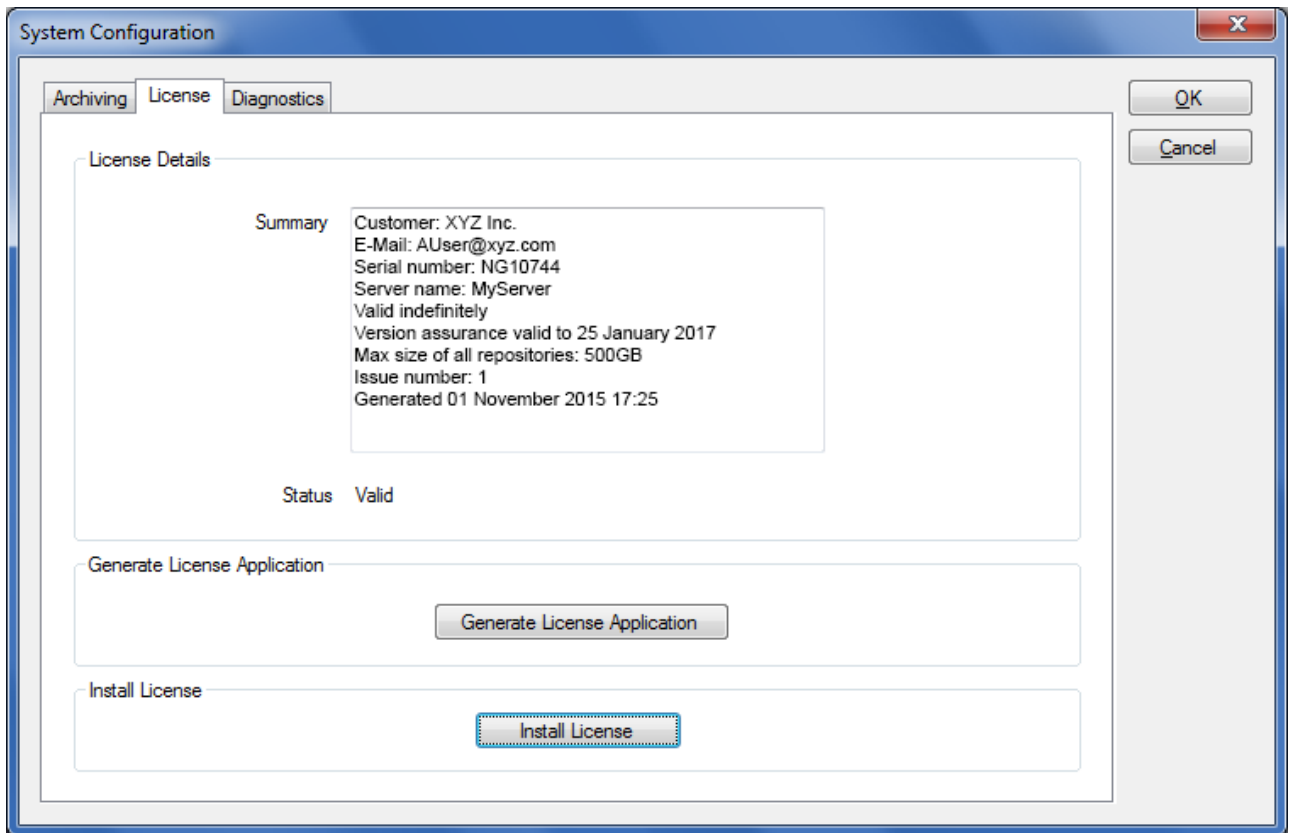
4. The **System Configuration** dialog displays. Click the **License** tab, and click **Install License**:



5. Navigate to and open the license key file you saved to the system in *Step 1*.  
6. Your license begins installing. When complete, click **OK** in the confirmation dialog:



7. The **System Configuration** dialog box displays your new license details:



8. The license is now successfully installed.

Continue with [Step 3 - Configure ArchiveOne for Files Agents](#).

## Figures

1. licensing\_sys\_config.png
2. license\_details.png
3. licensing\_sys\_config.png
4. generate\_license\_app.png
5. license\_app\_details.png
6. save\_license\_app.png
7. licensing\_sys\_config.png
8. install\_license.png
9. success.png
10. license\_installed.png

© Barracuda Networks Inc., 2020 The information contained within this document is confidential and proprietary to Barracuda Networks Inc. No portion of this document may be copied, distributed, publicized or used for other than internal documentary purposes without the written consent of an official representative of Barracuda Networks Inc. All specifications are subject to change without notice. Barracuda Networks Inc. assumes no responsibility for any inaccuracies in this document. Barracuda Networks Inc. reserves the right to change, modify, transfer, or otherwise revise this publication without notice.