

Step 5 - Configure ArchiveOne for Files Policies

<https://campus.barracuda.com/doc/49054209/>

This section refers to the Barracuda ArchiveOne for Files version 7.2.0 and higher.

See also:

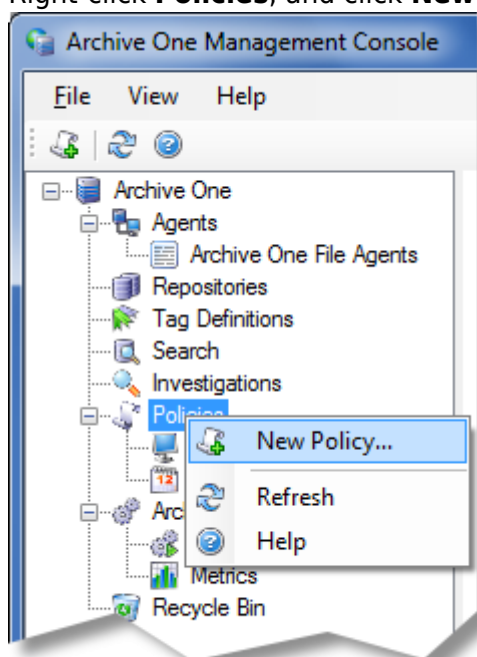
- [Understanding the Policies Node](#)
- [Understanding Repositories](#)
- [Designing Repositories](#)
- [How to Configure Network-Based Repositories](#)
- [How to Back Up a Repository](#)
- [How to Move a Repository](#)

A policy is a set of rules and actions an agent uses to process data stored on a file server.

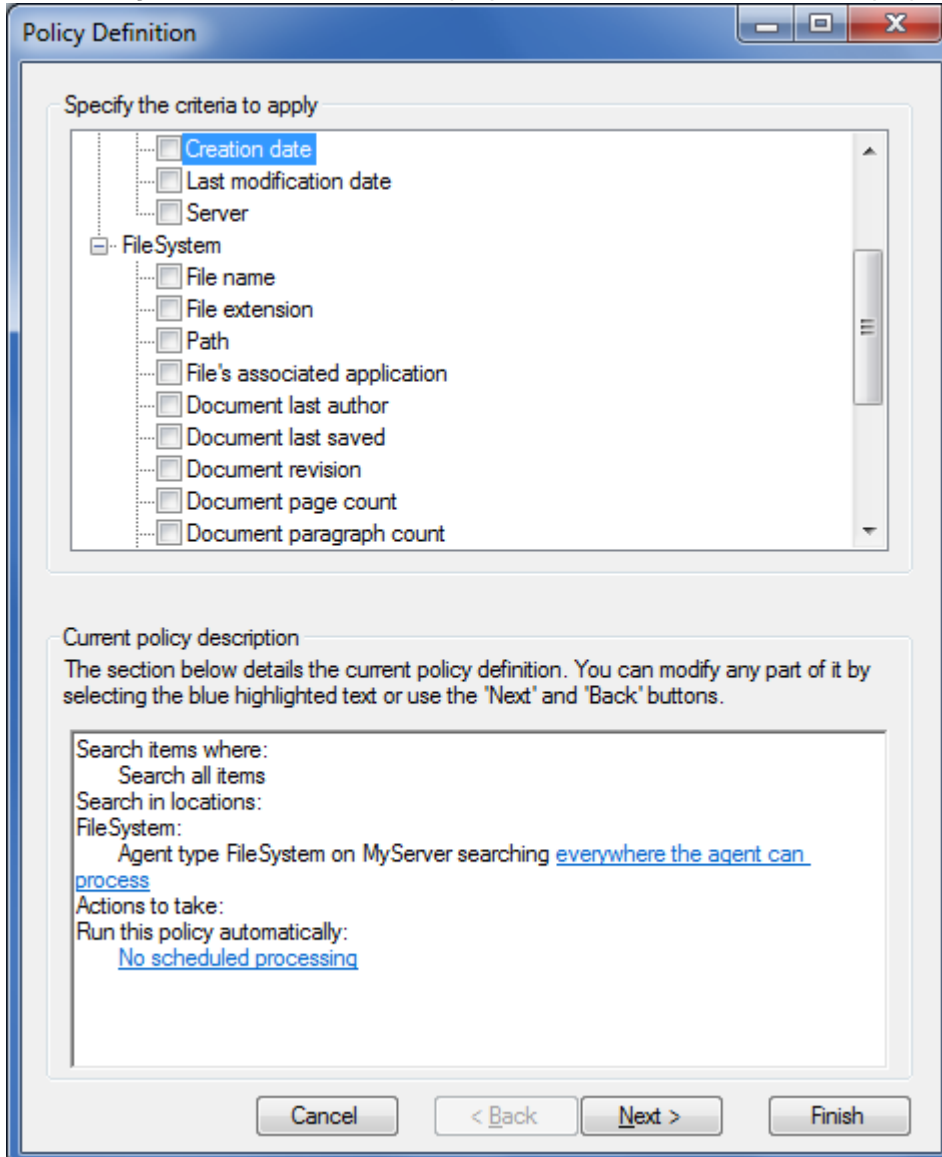
Define a List Policy

Barracuda Networks recommends initially using the **List** action to become more familiar with the system and to experiment with various criteria settings.

1. Start the ArchiveOne Management Console.
2. Right-click **Policies**, and click **New Policy**:



3. The **Policy Definition** wizard displays. Click **Next**. The **Criteria** page displays:



Policy Definition

Specify the criteria to apply

- ☒ Creation date
- ☐ Last modification date
- ☐ Server
- ☒ FileSystem
 - ☐ File name
 - ☐ File extension
 - ☐ Path
 - ☐ File's associated application
 - ☐ Document last author
 - ☐ Document last saved
 - ☐ Document revision
 - ☐ Document page count
 - ☐ Document paragraph count

Current policy description

The section below details the current policy definition. You can modify any part of it by selecting the blue highlighted text or use the 'Next' and 'Back' buttons.

Search items where:
Search all items

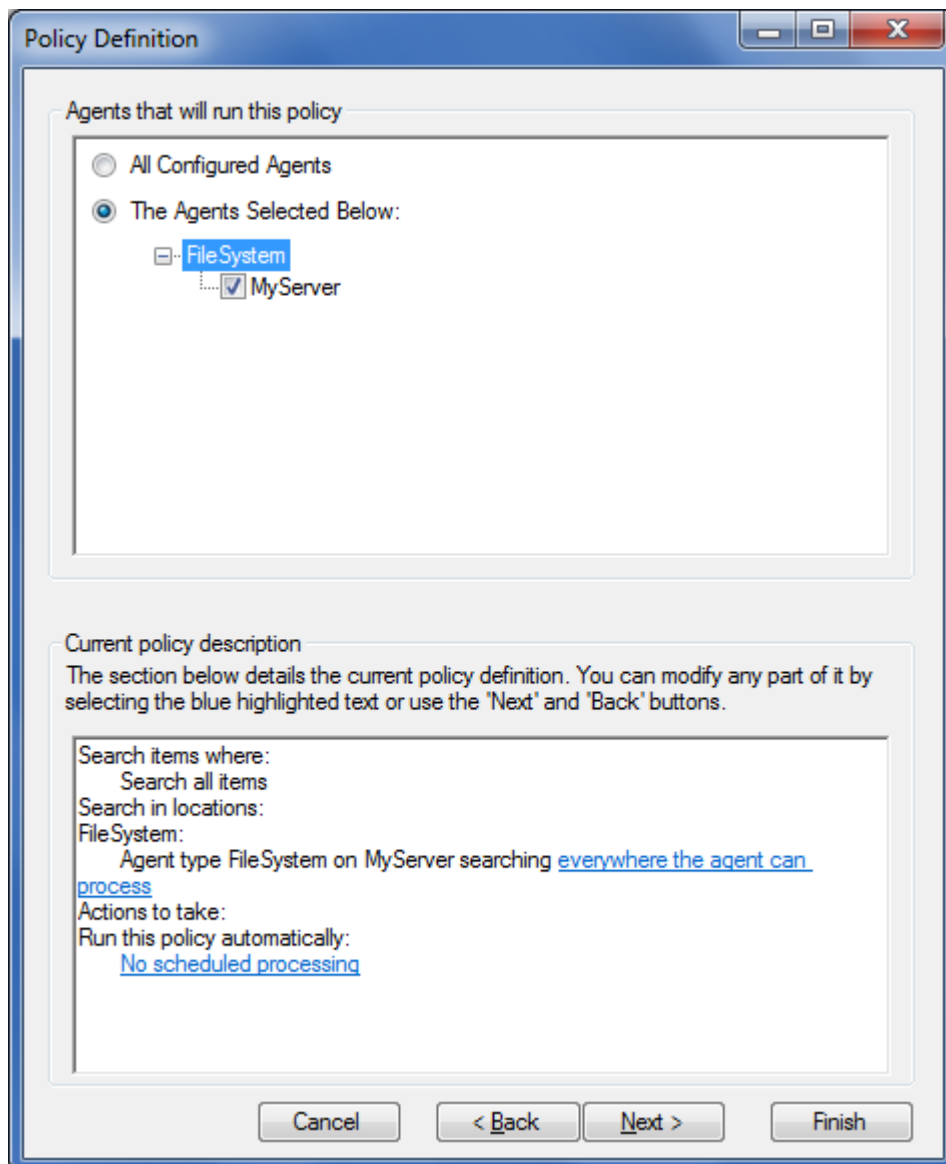
Search in locations:
FileSystem:
Agent type FileSystem on MyServer searching everywhere the agent can process

Actions to take:

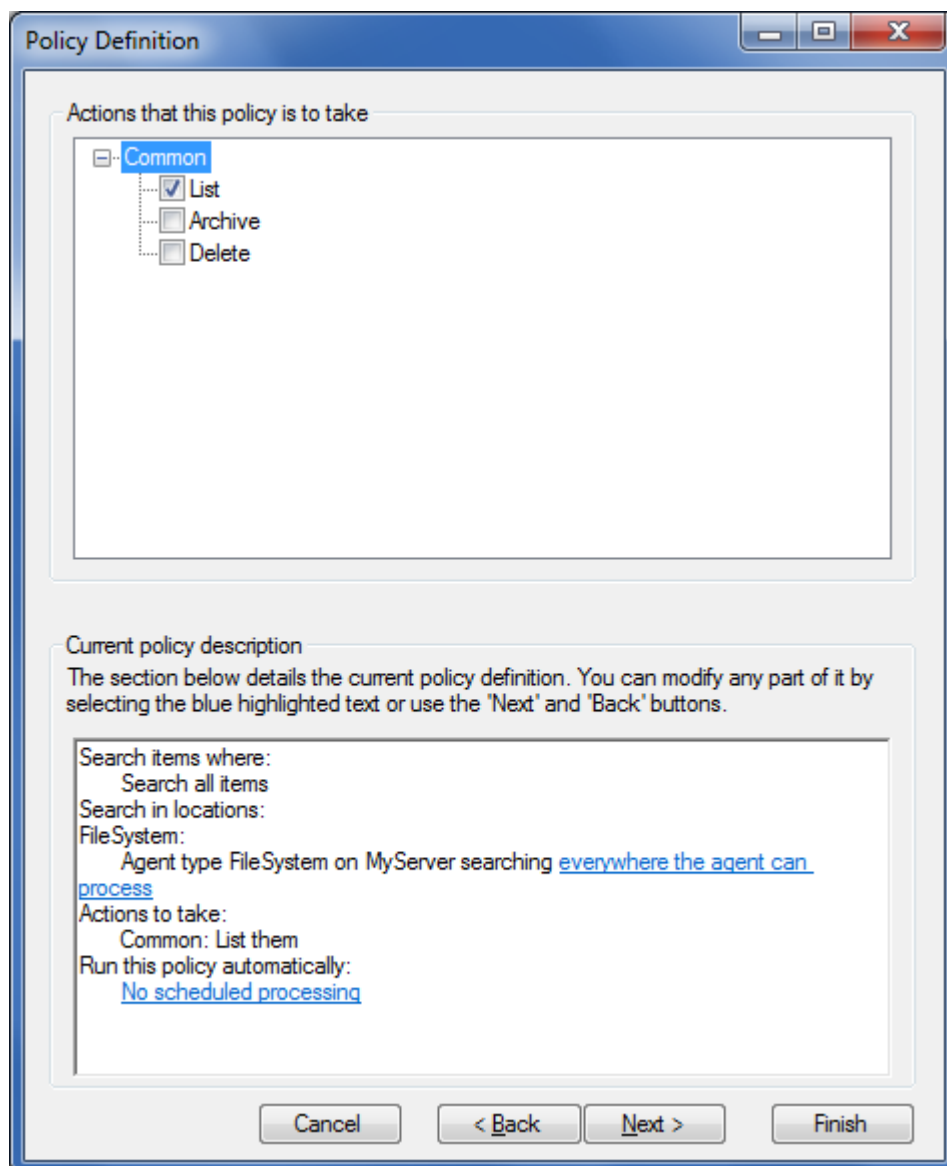
Run this policy automatically:
No scheduled processing

Cancel < Back Next > Finish

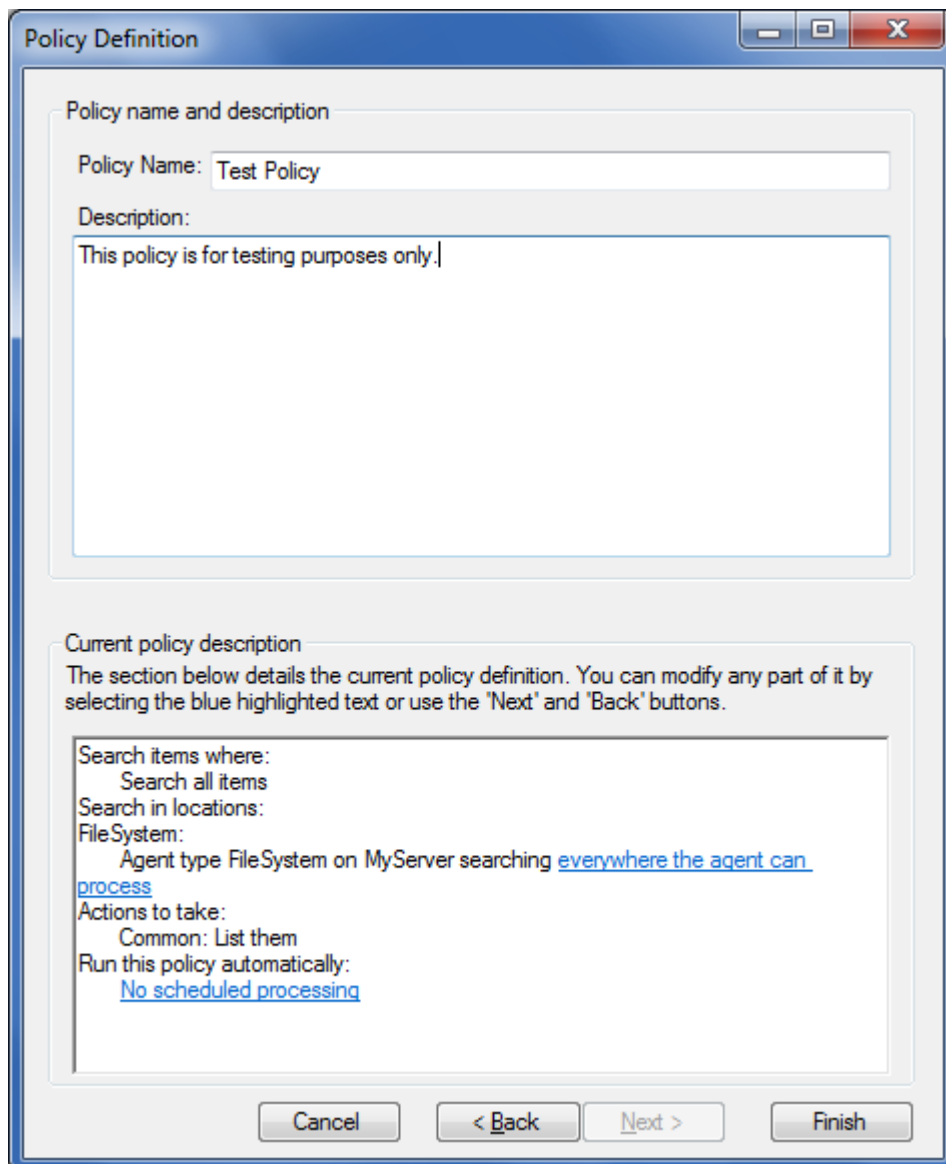
4. Use the **Criteria** page to select items to list. Select individual items, or clear all criteria to search all items. Click **Next**.
5. The **Agents** page displays:



6. Select an agent:
 - **All Configured Agents** – When selected, the policy runs on all configured agents.
 - **The Agents Selected Below**– When selected, the policy runs only on the selected agents.
7. Click **Next**. The **Actions** page displays. Select the actions you want the agents to perform. For this example, select **List**:



8. Click **Next**. The **Description** page displays. Enter a **Policy Name** and optional **Description**:



Policy Definition

Policy name and description

Policy Name: Test Policy

Description:
This policy is for testing purposes only.

Current policy description

The section below details the current policy definition. You can modify any part of it by selecting the blue highlighted text or use the 'Next' and 'Back' buttons.

Search items where:
Search all items

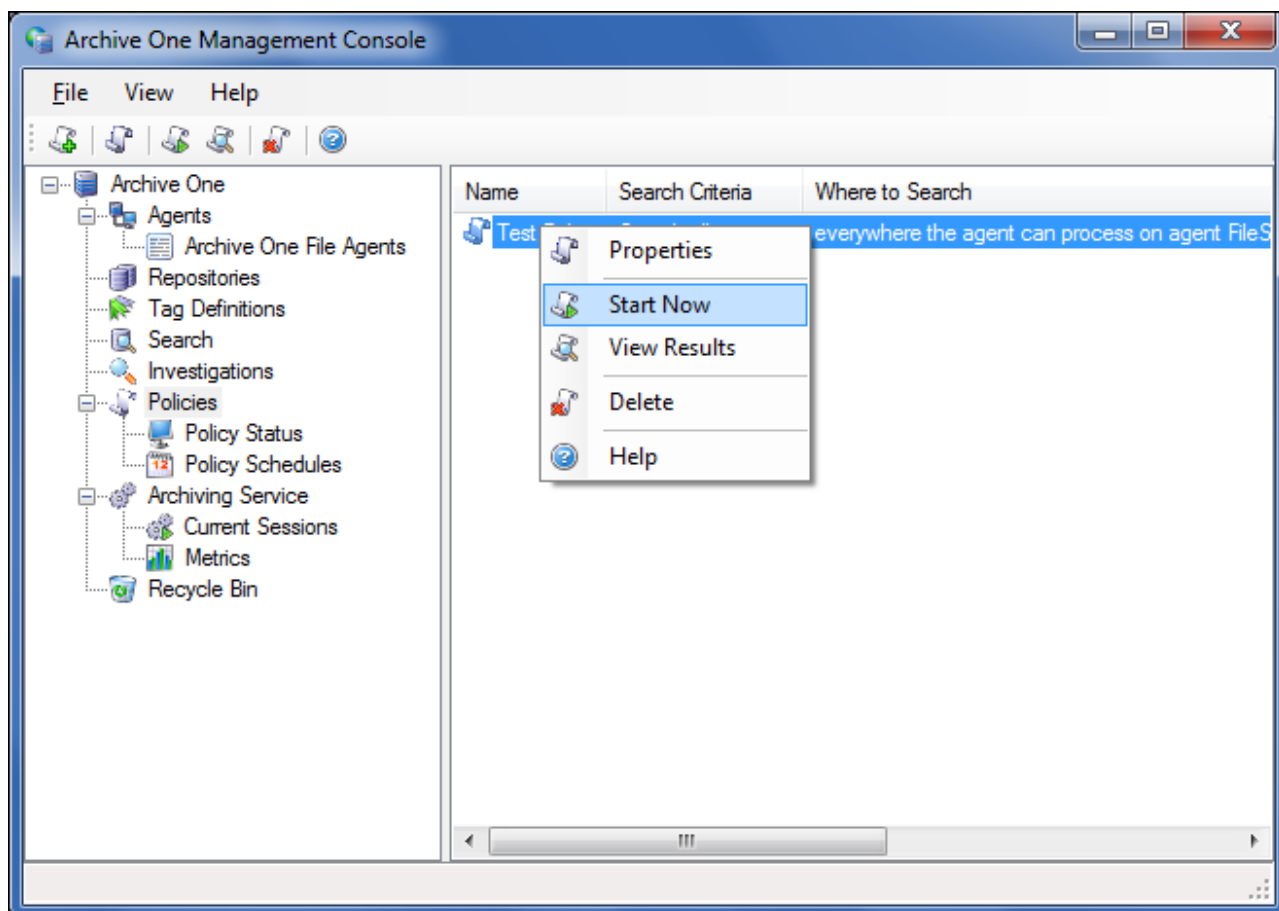
Search in locations:
FileSystem:
Agent type FileSystem on MyServer searching everywhere the agent can process

Actions to take:
Common: List them

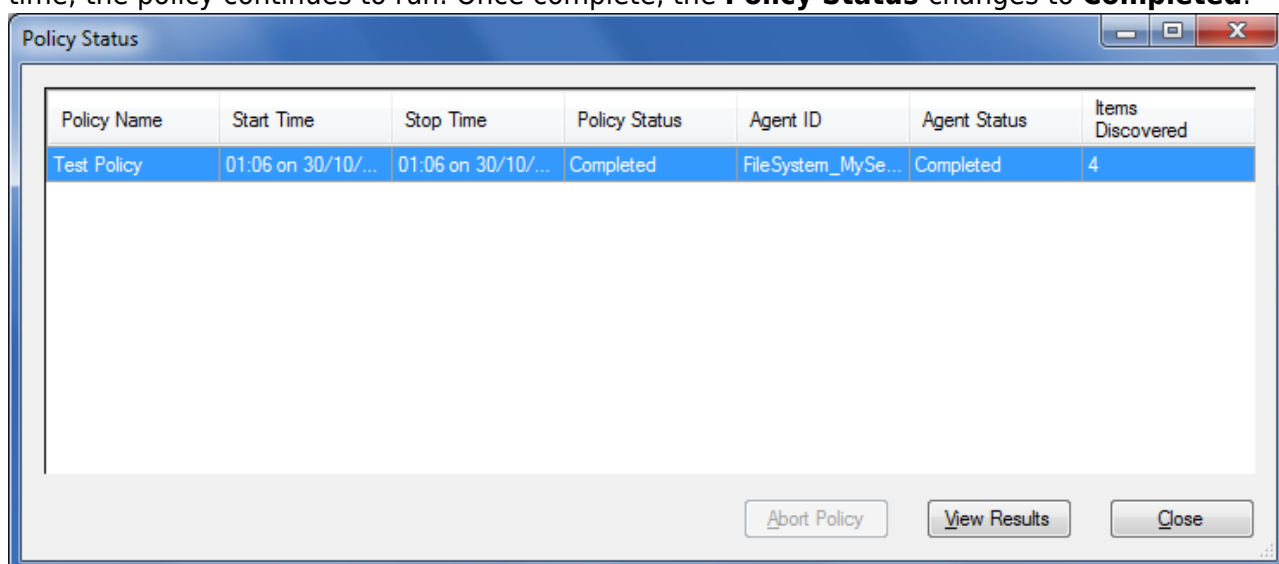
Run this policy automatically:
No scheduled processing

Cancel < Back Next > Finish

9. Click **Finish**. The repository is now available for execution. To run the policy, right-click the policy, and click **Start Now**:

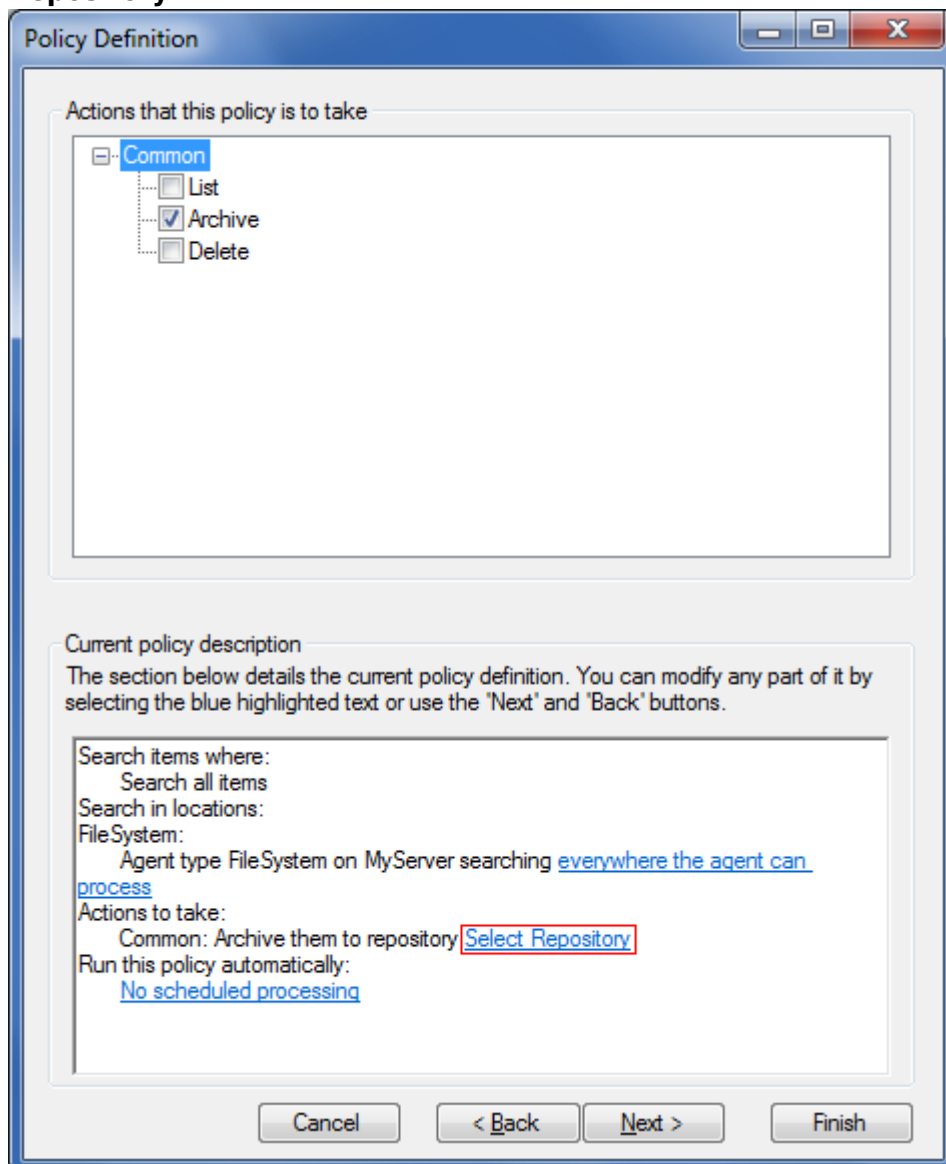


10. The **Policy Status** dialog box displays the policy progress. You can close the dialog at any time; the policy continues to run. Once complete, the **Policy Status** changes to **Completed**:

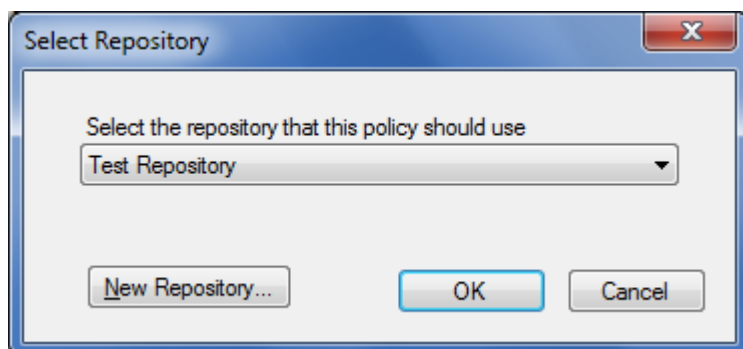


Define an Archive Policy

1. Start the ArchiveOne Management Console.
2. Right-click **Policies**, and click **New Policy**.
3. The **Policy Definition** wizard displays. Click **Next**. The **Criteria** page displays.
4. Use the **Criteria** page to select items to list. Select individual items, or clear all criteria to search all items. Click **Next**.
5. The **Agents** page displays. Select an agent:
 - **All Configured Agents** – When selected, the policy runs on all configured agents.
 - **The Agents Selected Below** – When selected, the policy runs only on the selected agents.
6. Click **Next**. The **Actions** page displays. Select the actions you want the agents to perform. For this example, select **Archive**.
7. In the **Current policy description** section at the bottom of the page, click **Select Repository**:



8. The **Select Repository** dialog box displays. Select the repository to which the agent is to archive data:

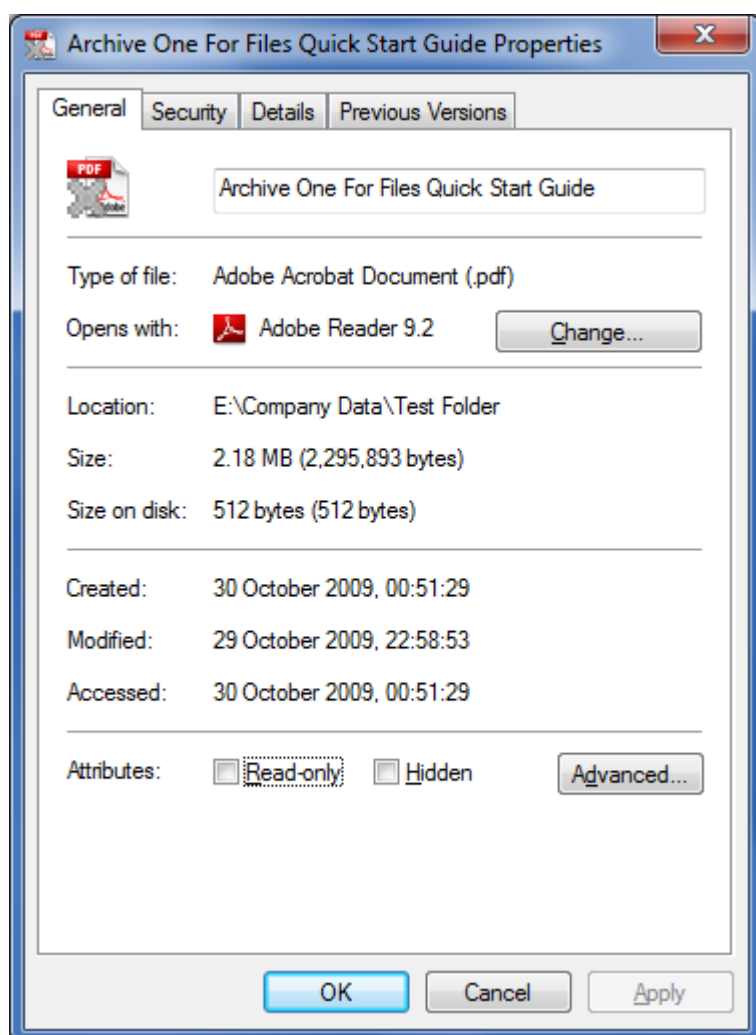


9. Click **OK** to close the dialog box, and then click **Finish**.
10. To run the policy, right-click the policy, and click **Start Now**.

Verify Data Archive

To verify items have been archived:

1. Using Windows Explorer, navigate to the directory containing the original files.
2. Right-click on a file and click **Properties**. For example:



In this example, the **Size** of the file is reported as **2.18 MB** while the **Size On Disk** is reported as **512 bytes** confirming that the file has been archived. If a user opens this file, ArchiveOne for Files retrieves it from the repository and presents it to the user in the normal manner.

Continue with [ArchiveOne for Files Search and Retrieval](#).

Figures

1. new_policy.png
2. define_policy01.png
3. define_policy02.png
4. define_policy03.png
5. define_policy04.png
6. start_policy.png
7. policy_status.png
8. select_archive_repos.png
9. select_repos.png
10. archive_properties.png

© Barracuda Networks Inc., 2024 The information contained within this document is confidential and proprietary to Barracuda Networks Inc. No portion of this document may be copied, distributed, publicized or used for other than internal documentary purposes without the written consent of an official representative of Barracuda Networks Inc. All specifications are subject to change without notice. Barracuda Networks Inc. assumes no responsibility for any inaccuracies in this document. Barracuda Networks Inc. reserves the right to change, modify, transfer, or otherwise revise this publication without notice.