

## Self-Service VPN Provisioning on Microsoft Windows

<https://campus.barracuda.com/doc/49054277/>

Use CudaLaunch to automatically push and manage VPN profiles on Windows devices. For more information, see [CudaLaunch](#).

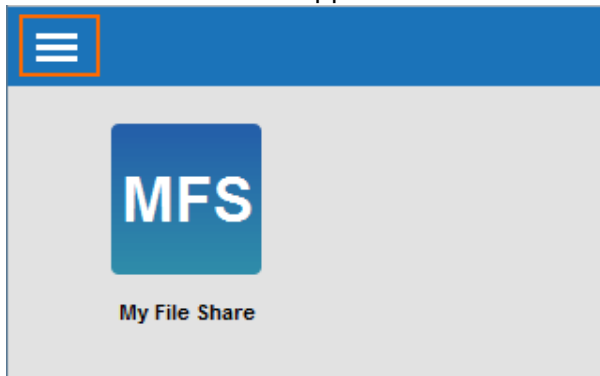
The Barracuda NextGen Firewall X-Series SSL VPN portal allows users to automatically install VPN configurations on their Windows device by downloading the VPN group policy.

### Before you Begin

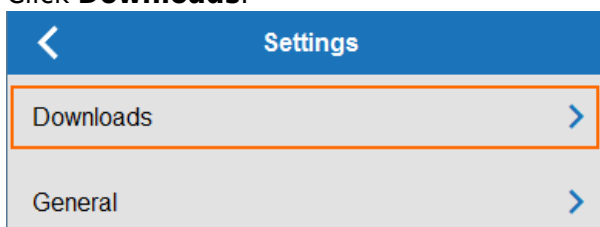
- Configure the VPN access policy in the client-to-site VPN settings. For more information, see [How to Configure VPN Templates in the SSL VPN](#).

### Self-Service VPN provisioning on Microsoft Windows

1. Log into the SSL VPN web portal.
2. Click the menu in the upper-left corner and click **Settings**.



3. Click **Downloads**.



4. In the **VPN Configurations** section, click the download icon for the VPN group policy.

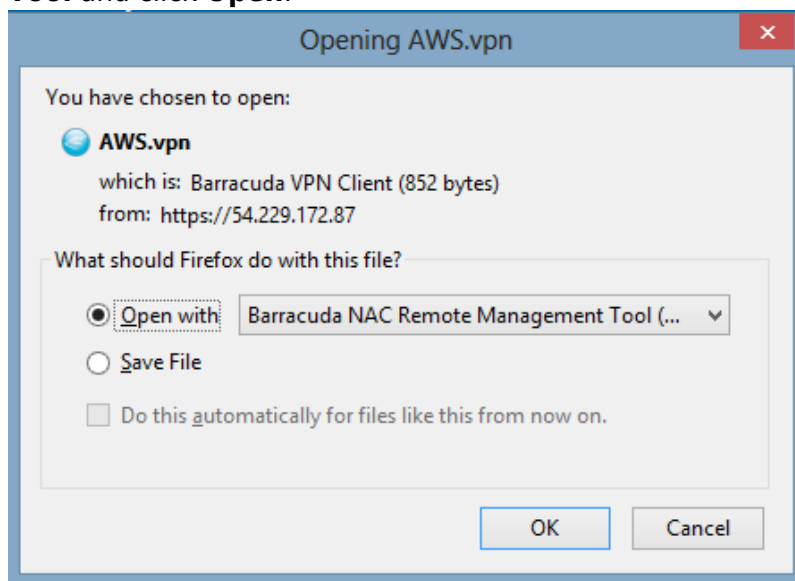
## VPN Configurations

Download files to automatically configure the Barracuda Network Access Client VPN connection settings.

MyVPNGroupPolicy



5. Verify that you are opening the VPN template with the **Barracuda NAC Remote Management Tool** and click **Open**.



The VPN template is now the default VPN configuration. You can now connect to the Barracuda NextGen Firewall X-Series via the client-to-site VPN.

## Figures

1. vpn\_provision\_01.png
2. vpn\_provision\_02.png
3. vpn\_provision\_03.png
4. desktop04.png

© Barracuda Networks Inc., 2024 The information contained within this document is confidential and proprietary to Barracuda Networks Inc. No portion of this document may be copied, distributed, publicized or used for other than internal documentary purposes without the written consent of an official representative of Barracuda Networks Inc. All specifications are subject to change without notice. Barracuda Networks Inc. assumes no responsibility for any inaccuracies in this document. Barracuda Networks Inc. reserves the right to change, modify, transfer, or otherwise revise this publication without notice.