

Adding a File Share Connection

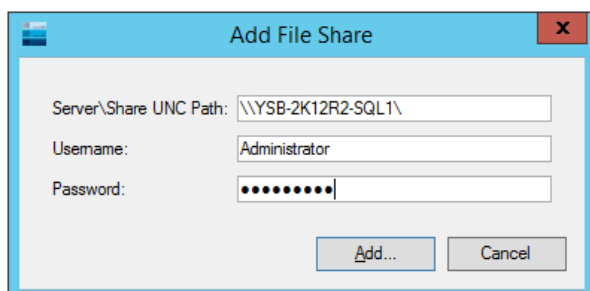
<https://campus.barracuda.com/doc/51190639/>

This feature is available for Windows machines running Yosemite Server Backup version 10.5.00 or newer.

Yosemite Server Backup can make direct connections to any Common Internet File System (CIFS) server / share. You can use this connection as a backup source or restore target - either in their entirety or parts within them.

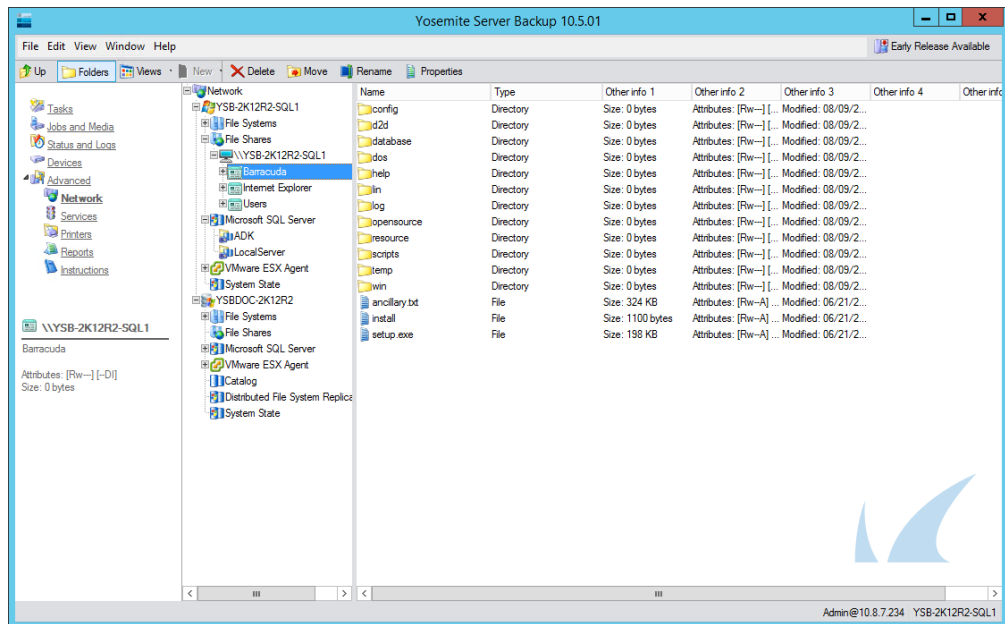
To add a file share connection:

1. In the **Navigation** bar, select **Advanced**, then **Network**. The network tree of your servers displays.
2. Within the desired server, click **File Shares**. Then click **Add**. (Alternatively, right-click the file share agent, then select **Add**.)
3. In the **Add File Share** window, enter a server or share name, along with its corresponding **Username** and **Password**. Then click **Add**.



Specify using the following format: **\\SERVER_NAME** or **\\SERVER_NAME\SHARE**

The file share appears. Note that the server displays with individual shares below it.



You are now able to protect the file share as a backup source or use it as a restore target.

Figures

1. addDialog.png
2. fileShare.png

© Barracuda Networks Inc., 2024 The information contained within this document is confidential and proprietary to Barracuda Networks Inc. No portion of this document may be copied, distributed, publicized or used for other than internal documentary purposes without the written consent of an official representative of Barracuda Networks Inc. All specifications are subject to change without notice. Barracuda Networks Inc. assumes no responsibility for any inaccuracies in this document. Barracuda Networks Inc. reserves the right to change, modify, transfer, or otherwise revise this publication without notice.