

How to Enable Application Control

<https://campus.barracuda.com/doc/53248552/>

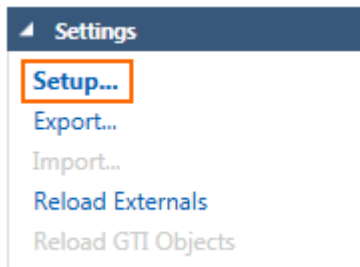
Application Control expands the scope of the firewall engine to include application type as a matching criteria. If an access rule matches that Application Control is enabled for, the application ruleset is processed from top to bottom and the action set in the first matching application rule is executed (block or deny). Application detection for applications using SSL-encrypted connections allow for more granular control when SSL Interception is enabled. Application Control is currently limited to IPv4. Application definition updates for managed Barracuda NextGen F-Series Firewalls are distributed via the Control Center. Phion legacy-licensed Control Centers do not support updating application definitions via Energize Updates.

Supported NextGen Firewall F-Series Models

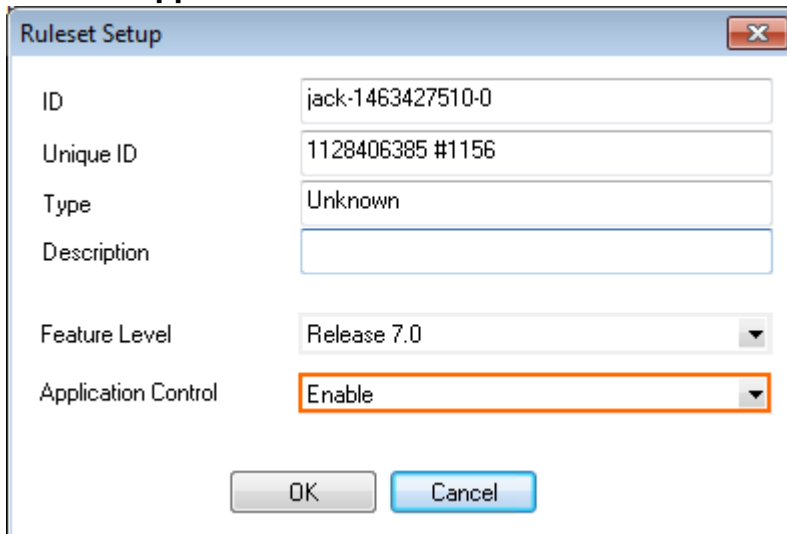
Feature	Supported NextGen Firewall F-Series Model
Application Control	Available on all models with valid Energize Updates subscription except VF10. On hardware models without valid Energize Updates subscription or with a legacy phion license, Application Control is limited to detecting applications only.
SSL Interception	Available on all models with valid Energize Updates subscription, except F10 , VF10, and F100/F101 .
URL Filter	Available on all models with valid Energize Updates subscription, except F10 and VF10
Virus Scanning	Available on all models with valid Energize Updates and Malware subscriptions, except F10 and VF10
Advanced Threat Detection	Available on all models with valid Energize Updates, Malware, and Advanced Threat Detection subscriptions, except F10 , VF10, and F100/F101 .
File Content Scan	Available on all models with valid Energize Updates and Malware subscriptions, except F10 and VF10.
Safe Search, YouTube for Schools, and Google Accounts	Available on all models with valid Energize Updates subscription, except VF10.

Enable Application Control

1. Go to **CONFIGURATION > Configuration Tree > Box > Virtual Servers > your virtual server > Assigned Services > Firewall > Forwarding Rules**.
2. Click **Lock**.
3. In the left menu, expand **Settings** and click **Setup**. The **Ruleset Setup** window opens.



4. From the **Application Ruleset** list select **Enable**.



5. Click **OK**.
6. Click **Send Changes** and **Activate**.

Next Steps

- Create application objects. For more information, see [How to Create a Custom Application Object](#).
- Create application rules. For more information, see [How to Create an Application Rule](#).

Figures

1. firewall_feature_level01.png
2. enable_application_control.png

© Barracuda Networks Inc., 2020 The information contained within this document is confidential and proprietary to Barracuda Networks Inc. No portion of this document may be copied, distributed, publicized or used for other than internal documentary purposes without the written consent of an official representative of Barracuda Networks Inc. All specifications are subject to change without notice. Barracuda Networks Inc. assumes no responsibility for any inaccuracies in this document. Barracuda Networks Inc. reserves the right to change, modify, transfer, or otherwise revise this publication without notice.