

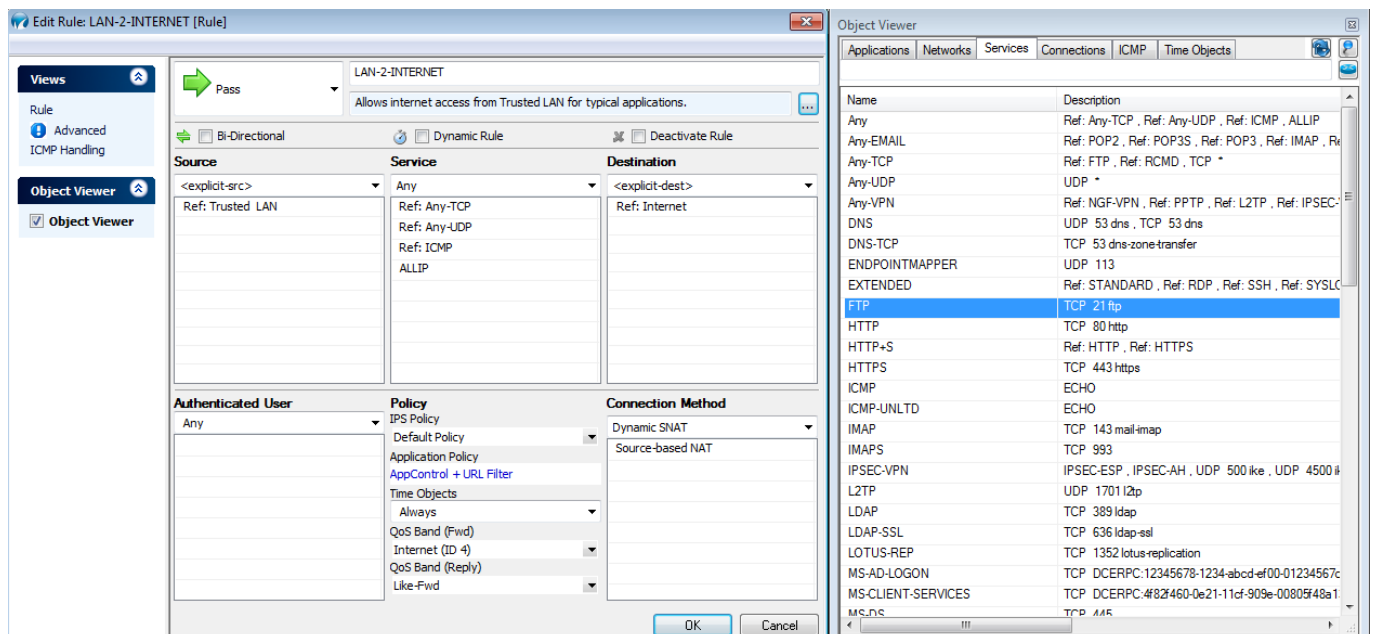
How to Edit, Copy, Clone, Deactivate, or Delete Access Rules

<https://campus.barracuda.com/doc/53248879/>

You can perform various basic tasks when working with access rules in the host and forwarding rule sets:

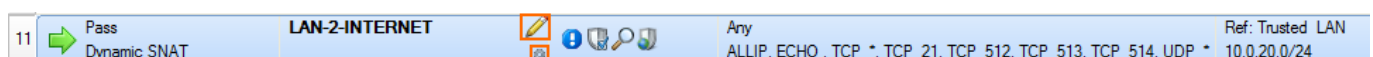
Edit Access Rules

Edit access rules by either double-clicking the rule or right-clicking the rule and selecting **Edit**. In the **Edit Rule** window, you can configure all possible configuration settings for the access rule. Select the **Object Viewer** check box in the left menu to display or hide the **Object Viewer**.



Inline Editing

You can change access rule settings without opening the **Edit Rule** window. Select the rule, hover your mouse pointer over the value that you want to change, and click the edit icon (✎ or ⚙).



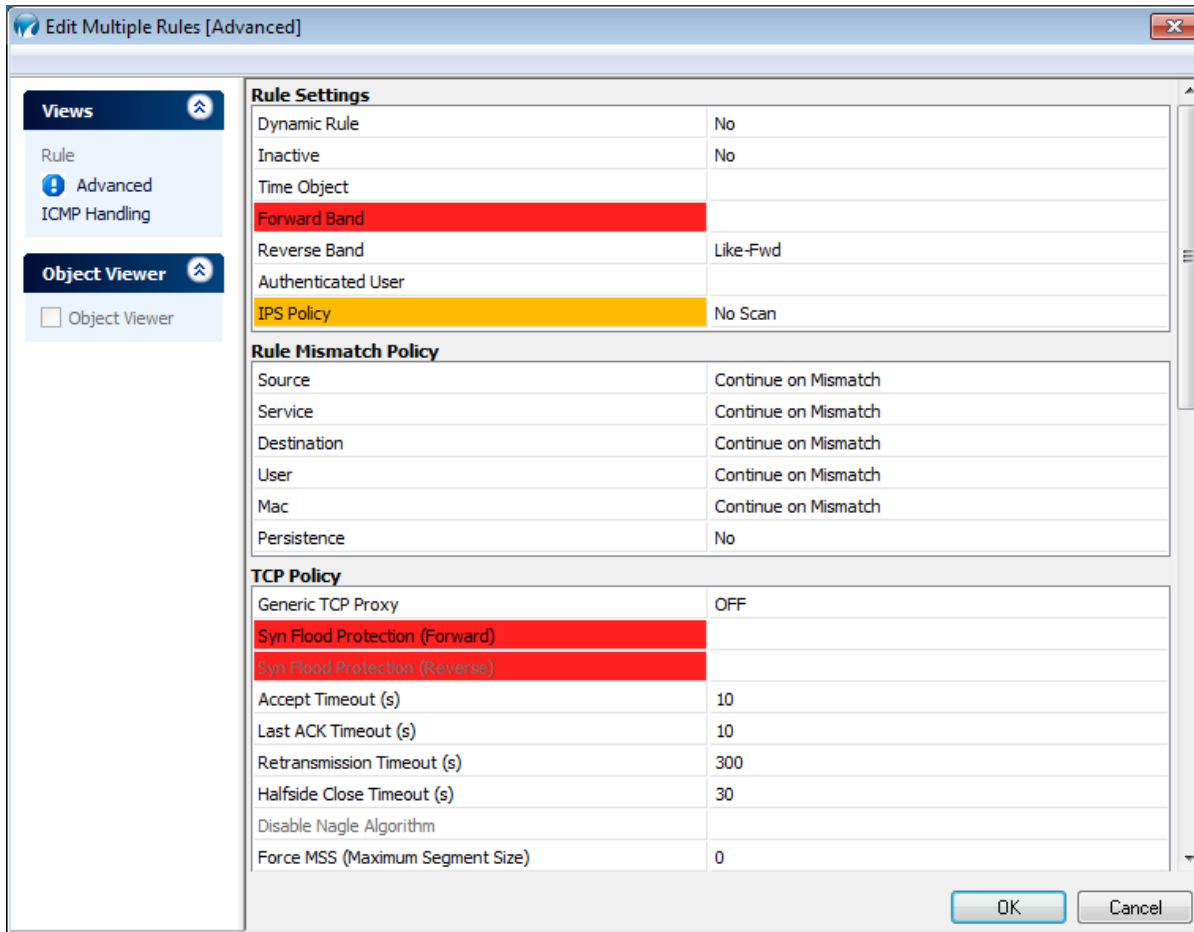
Edit Multiple Access Rules

Use caution when you edit multiple access rules simultaneously because you can introduce a severe misconfiguration.

For a basic setting such as source or destination that is used in multiple access rules, you can use a firewall object. When you change the object, the change is automatically updated in every rule that refers to this object.

If you must change **Advanced** or **ICMP Handling** settings for more than one access rule, you can edit multiple access rules simultaneously.

1. Go to **CONFIGURATION > Configuration Tree > Box > Virtual Servers > *your virtual server* > Assigned Services > Firewall > Forwarding Rules**.
2. Click **Lock**.
3. Hold the **Ctrl** key and select the access rules that you want to edit.
4. Right-click the selected access rules and select **Edit**.
5. In the **Edit Multiple Rules** window, change **Advanced**, or **ICMP Handling** settings as needed. The settings are color-coded:
 - **Yellow** – This setting differs from the default value and is the same for all selected access rules.
 - **Red** – One or more of the selected access rules use differing settings for this parameter. Changing the parameter overwrites the settings for all selected access rules.
6. Click **Send Changes** and **Activate**.



Rule Settings	
Dynamic Rule	No
Inactive	No
Time Object	
Forward Band	
Reverse Band	Like-Fwd
Authenticated User	
IPS Policy	No Scan

Rule Mismatch Policy	
Source	Continue on Mismatch
Service	Continue on Mismatch
Destination	Continue on Mismatch
User	Continue on Mismatch
Mac	Continue on Mismatch
Persistence	No

TCP Policy	
Generic TCP Proxy	OFF
Syn Flood Protection (Forward)	
Syn Flood Protection (Reverse)	
Accept Timeout (s)	10
Last ACK Timeout (s)	10
Retransmission Timeout (s)	300
Halfside Close Timeout (s)	30
Disable Nagle Algorithm	
Force MSS (Maximum Segment Size)	0

OK Cancel

Clone Access Rules

If you want to duplicate an access rule, click **Lock**. Then right-click the access rule that you want to duplicate and select **Clone**. A copy of the rule is inserted below the original rule, with **COPY** appended to the rule name.

Copy, Cut, and Paste Access Rules

If you want to copy or cut an access rule from one rule set to another, click **Lock**. Then right-click the rule and select **Copy** or **Cut**. To paste the access rule into a rule set, right-click the rule above the location that you want the new rule to be inserted and select **Paste**.

Delete Access Rules

To delete an access rule, click **Lock**. Then right-click the rule that you want to delete and select **Delete**.

Deactivate Access Rules

If you want to temporarily disable an access rule, click **Lock**. Then right-click the rule that you want to deactivate and select **Deactivate**. Until the rule is reactivated, it is not evaluated by the Firewall service. If you want to create temporary rules (e.g., for administrative SSH access), use dynamic firewall rules instead.

Move Access Rules Up or Down

To change the order in which the access rules are evaluated, you can either drag and drop rules to the desired location or right-click the rule and select **Move Up** or **Move Down** to move the rule up or down one line.

Figures

1. FW_Edit_Rule.png
2. Edit_pen.png
3. Edit_Setting.png
4. FW_Quick_Edit.png
5. FW_Multiple_Edit.png

© Barracuda Networks Inc., 2024 The information contained within this document is confidential and proprietary to Barracuda Networks Inc. No portion of this document may be copied, distributed, publicized or used for other than internal documentary purposes without the written consent of an official representative of Barracuda Networks Inc. All specifications are subject to change without notice. Barracuda Networks Inc. assumes no responsibility for any inaccuracies in this document. Barracuda Networks Inc. reserves the right to change, modify, transfer, or otherwise revise this publication without notice.