

How to install Barracuda PST Enterprise v5.1 Copy Agent

<https://campus.barracuda.com/doc/69959800/>

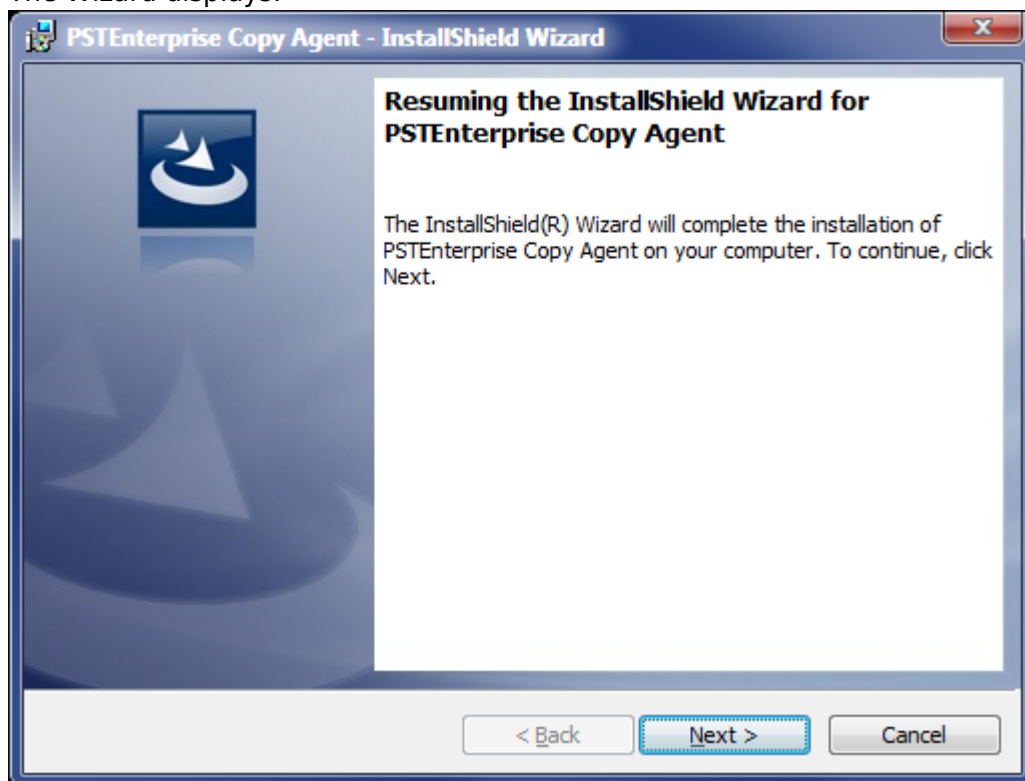
This article refers to the Barracuda PST Enterprise version 5.1.

To allow PST files to be copied or moved on client machines, you must install at least one Barracuda PST Enterprise Copy Agent on a separate server. To balance the workload in large environments, install Barracuda PST Enterprise Copy Agent on multiple servers. Note that each server must have a 32-bit version of Outlook installed.

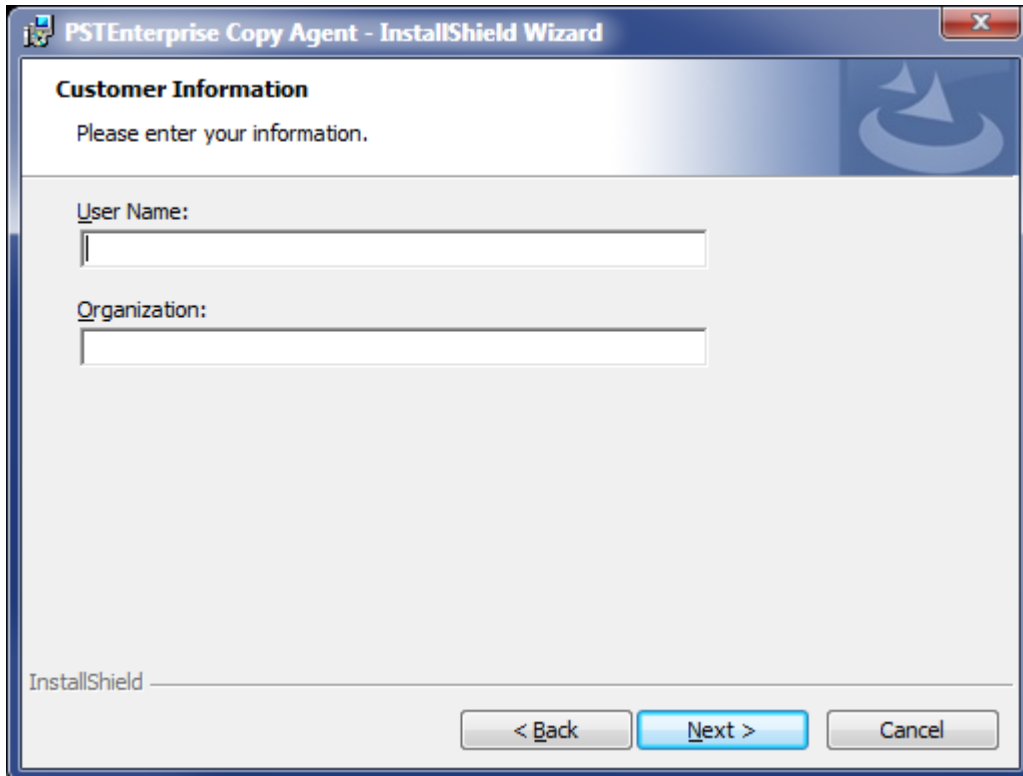
This option is available only if you selected the PST Copy Agent option during installation (see [How to Install Barracuda PST Enterprise v5.1](#)).

To install the Copy Agent,

1. On the machine where you want to install the Copy Agent, browse to the installation directory on the PST Enterprise server, by default: **C:\Program Files\Barracuda\PSTEnterprise**.
2. Right-click **PSTEnterpriseAgentSetup.exe**, and click **Run as Administrator**.
3. The Wizard displays:

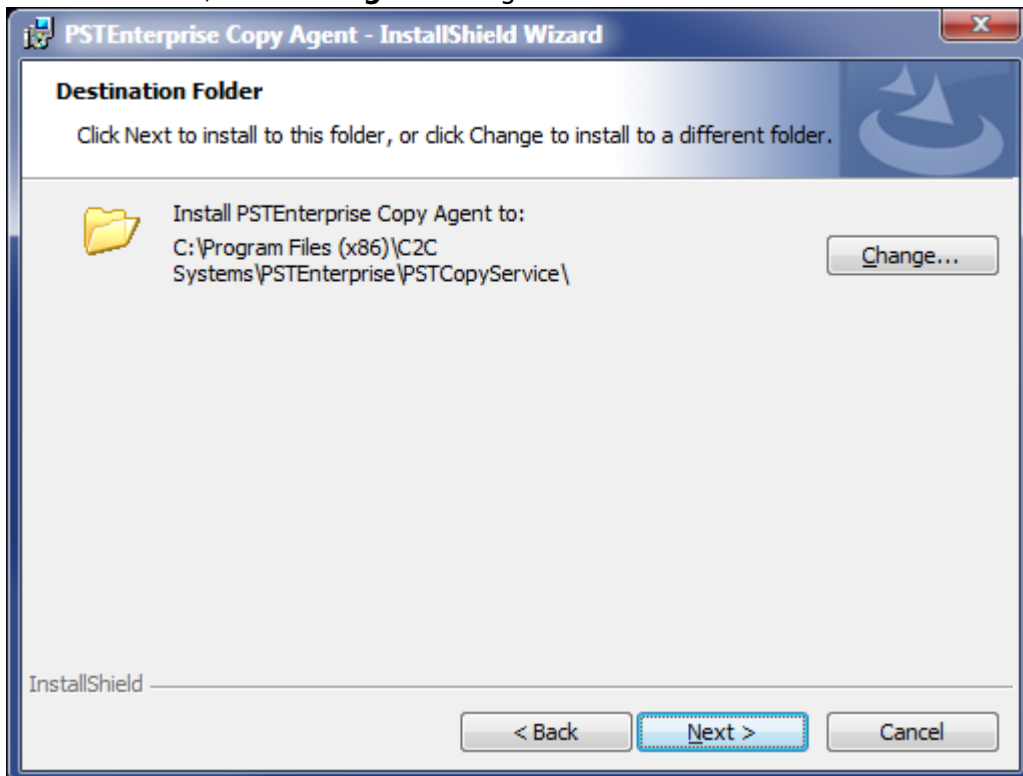


4. Click **Next**. In the **Customer Information** page, enter the **User Name** and **Organization**:



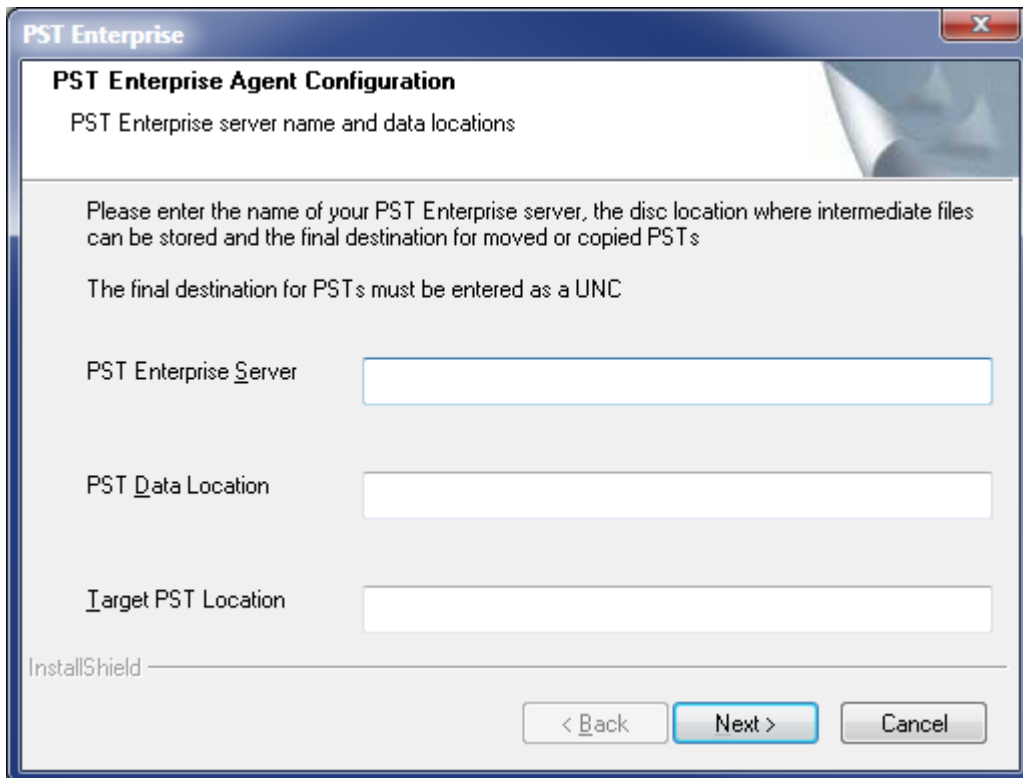
The screenshot shows the 'Customer Information' step of the 'PSTEnterprise Copy Agent - InstallShield Wizard'. The window has a blue header bar with the title and a close button. Below the header, the text 'Please enter your information.' is displayed. There are two text input fields: 'User Name:' and 'Organization:'. At the bottom, there are three buttons: '< Back', 'Next >', and 'Cancel'. The 'Next >' button is highlighted in blue.

5. Click **Next**. In the **Destination Folder**, verify the installation directory. By default the directory is **C:\Program Files(x86)\Barracuda\PSTEnterprise\PSTCopyService**. If you want to use a different folder, click **Change** to navigate to and select a different destination folder:



The screenshot shows the 'Destination Folder' step of the 'PSTEnterprise Copy Agent - InstallShield Wizard'. The window has a blue header bar with the title and a close button. Below the header, the text 'Click Next to install to this folder, or click Change to install to a different folder.' is displayed. There is a folder icon and the text 'Install PSTEnterprise Copy Agent to: C:\Program Files (x86)\C2C Systems\PSTEnterprise\PSTCopyService\'. To the right of this text is a 'Change...' button. At the bottom, there are three buttons: '< Back', 'Next >', and 'Cancel'. The 'Next >' button is highlighted in blue.

6. Click **Next**. The **PST Enterprise Agent Configuration** page displays:



7. Enter the following details:

1. **PST Enterprise Server** – Enter the name of the server where you installed the PST Enterprise application.
2. **PST Data Location** – Enter the path to a local directory on the PST Enterprise Copy Agent server. For example, **C:\TempData**. This directory is used to hold temporary data when PST files are copied or moved.
3. **Target PST Location** – Enter the UNC path to the target location where PSTs are to be copied and moved. This is used by the PST Enterprise Copy Agent to store the final PSTs after processing, for example **\\FILESERVER01\PstStore**.

8. Click **Next** to complete the installation.

To customize the PST copying process behavior click the **PST Enterprise Agent Configuration Tool** link on the **Start** menu.

Figures

1. install_agent01.png
2. install_agent02.png
3. install_agent03.png
4. install_agent04.png

© Barracuda Networks Inc., 2024 The information contained within this document is confidential and proprietary to Barracuda Networks Inc. No portion of this document may be copied, distributed, publicized or used for other than internal documentary purposes without the written consent of an official representative of Barracuda Networks Inc. All specifications are subject to change without notice. Barracuda Networks Inc. assumes no responsibility for any inaccuracies in this document. Barracuda Networks Inc. reserves the right to change, modify, transfer, or otherwise revise this publication without notice.