

How to Install Additional PST Enterprise Copy Agent Servers

<https://campus.barracuda.com/doc/69959858/>

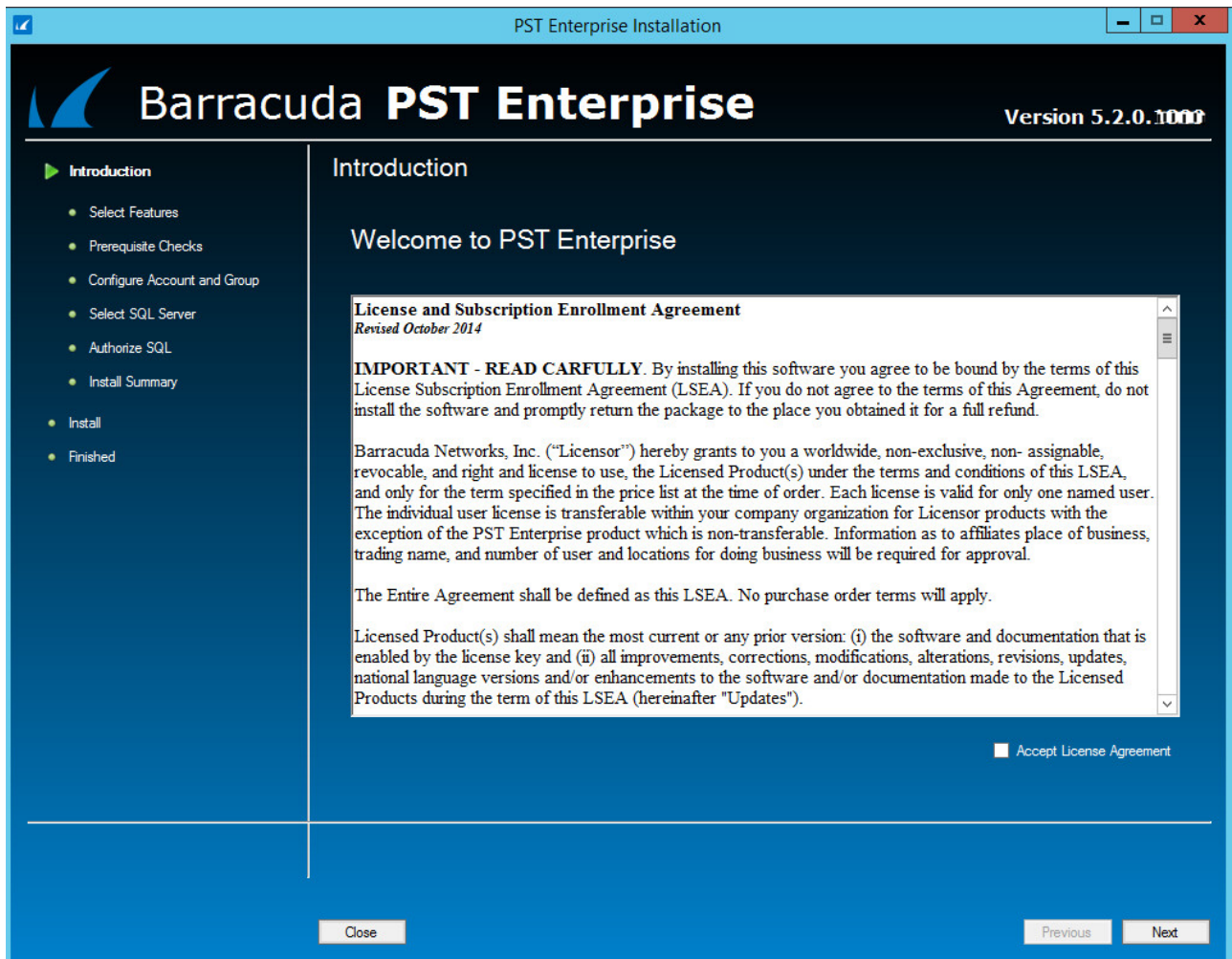
This article refers to the Barracuda PST Enterprise version 5.2 or higher.

To allow PST files to be copied or moved on client machines, you must install at least one Barracuda PST Enterprise Copy Agent (this can be on the PST Enterprise server itself if you wish). To balance the workload in large environments, install Barracuda PST Enterprise Copy Agent on multiple servers.

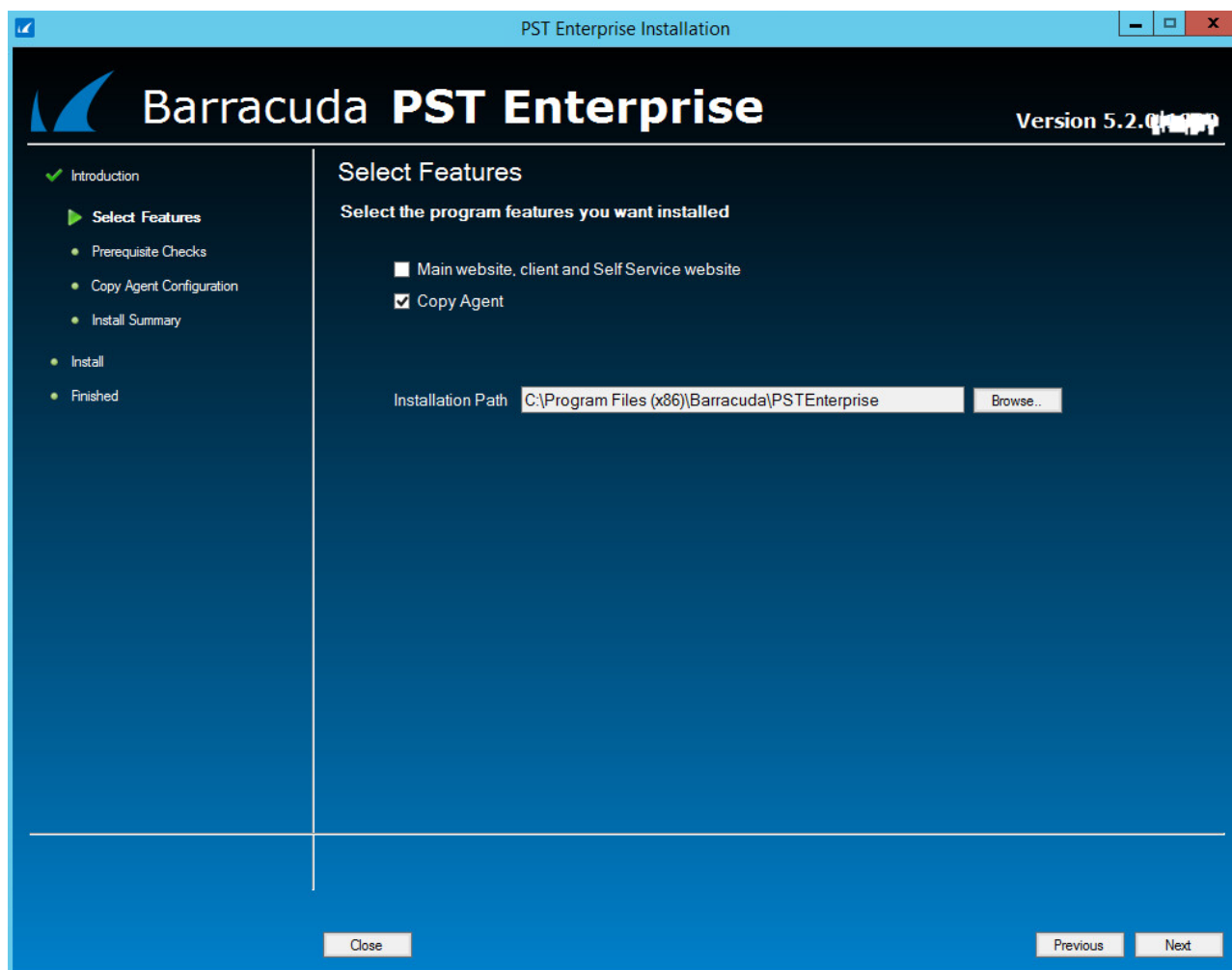
The server must have a 32-bit version of Outlook installed as per the [System Requirements](#).

To install the Copy Agent,

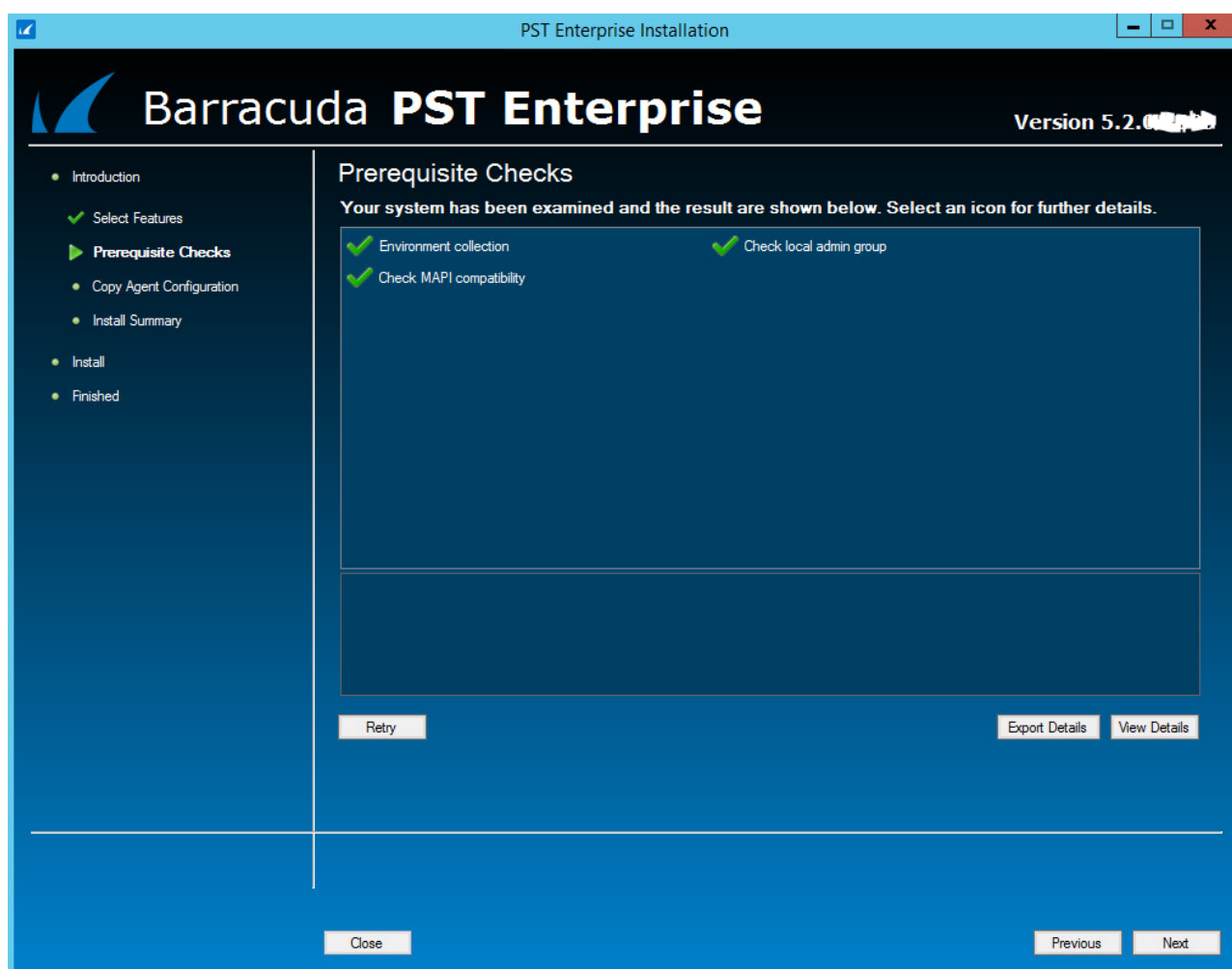
1. On the Copy Agent server, right-click **PSTEnterprise.<version>.exe**, and click **Run as Administrator**.
2. The installation wizard launches and the **License Agreement** page displays. Read the license, tick **I accept the terms in the license agreement** if you agree, and click **Next** to proceed:



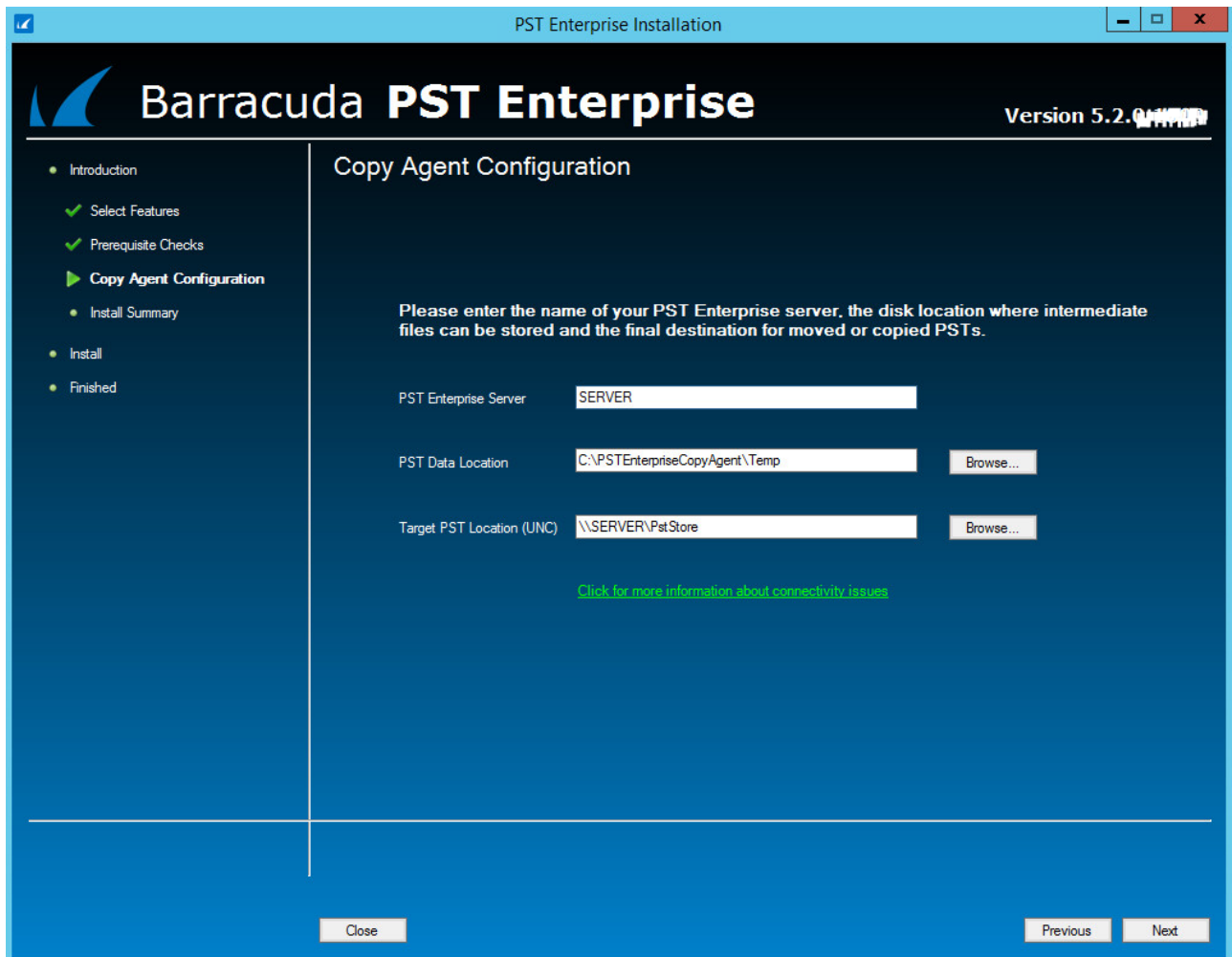
3. Use the **Select Features** page to tick the **Copy Agent** component for installation. By default, the installation directory is set to **C:\Program Files (x86)\Barracuda\PSTEnterprise**. To modify the installation directory, click **Browse**, and then navigate to the desired directory. Click **Next**.



4. The Deployment Analyzer runs to complete the prerequisite checks. If there are any warnings or failures, you must click **View Details** and correct the errors before you can continue. Click **Next**:



5. Click **Next**. The **Copy Agent Configuration** page displays:



6. Enter the following details:

1. **PST Enterprise Server** – Enter the name of the server where you installed the PST Enterprise application ([Step 2 - Install Barracuda PST Enterprise](#)).
2. **PST Data Location** – Enter the path to a local directory on the PST Enterprise Copy Agent server. For example, **C:\TempData**. This directory is used to hold temporary data when PST files are copied or moved.
3. **Target PST Location (UNC)** – Enter the UNC path to the target location where PSTs are to be copied and moved. This is used by the PST Enterprise Copy Agent to store the final PSTs after processing, for example **\\FILESERVER01\PstStore**.

7. Click **Next** to complete the installation.

To customize the Copy Agent behavior, click the **PST Enterprise Agent Configuration Tool** link on the **Start** menu. For further information, see [Barracuda PST Enterprise Agent Configuration](#).

You can now [create copy PST or move PST policies](#) using the installed Copy Agent server.

Figures

1. PSTInstall1.PNG
2. PSTInstall12.PNG
3. PSTInstall13.PNG
4. PSTInstall4.PNG

© Barracuda Networks Inc., 2024 The information contained within this document is confidential and proprietary to Barracuda Networks Inc. No portion of this document may be copied, distributed, publicized or used for other than internal documentary purposes without the written consent of an official representative of Barracuda Networks Inc. All specifications are subject to change without notice. Barracuda Networks Inc. assumes no responsibility for any inaccuracies in this document. Barracuda Networks Inc. reserves the right to change, modify, transfer, or otherwise revise this publication without notice.