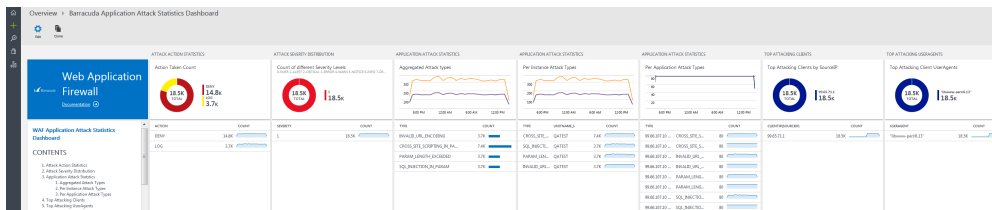


## Log Search

<https://campus.barracuda.com/doc/73696967/>

To perform custom log searches, or to create or modify any graphs in the existing dashboards, you can use the Log Analytics log query functionality.

For example, the “Per Application Attack Types” chart in the **Barracuda Application Attack Statistics Dashboard** displays the data based on the service IP address and port of the application instead of service name.



### Examples of Search Filters in the Logs

- To view the attack types for an application, use the following query in the log search:  
*barracuda\_CL | where LogType\_s == "WF" | search ServiceIP\_s == "99.65.141.20" | search ServicePort\_d == "443"*
- To view logs related to a particular AppId, use the following query in the log search:  
*barracuda\_CL | where AppId\_s == [appid]*

To know more about 'AppId', refer to the article [Using Application Id \(App Id\)](#).

## Figures

### 1. WAF\_Attack\_Stats.png

© Barracuda Networks Inc., 2024 The information contained within this document is confidential and proprietary to Barracuda Networks Inc. No portion of this document may be copied, distributed, publicized or used for other than internal documentary purposes without the written consent of an official representative of Barracuda Networks Inc. All specifications are subject to change without notice. Barracuda Networks Inc. assumes no responsibility for any inaccuracies in this document. Barracuda Networks Inc. reserves the right to change, modify, transfer, or otherwise revise this publication without notice.