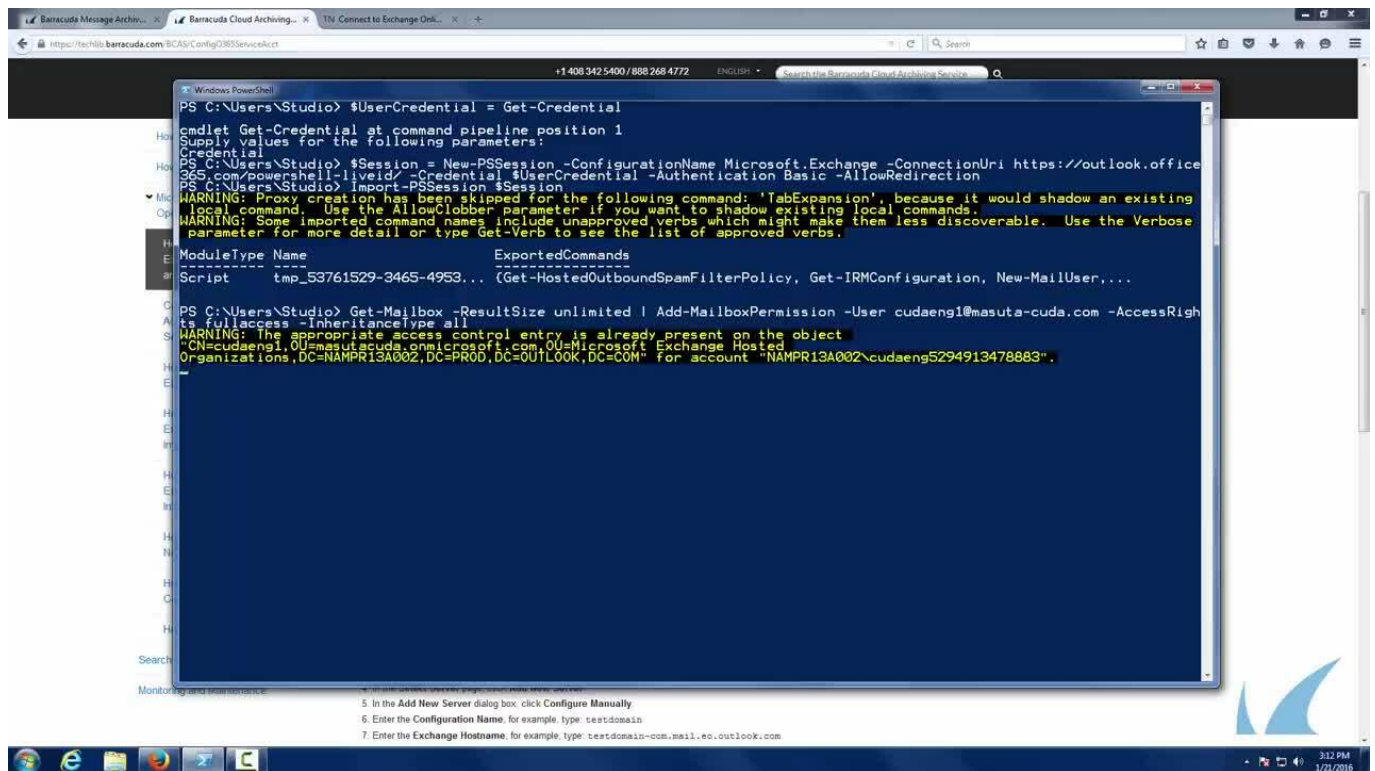
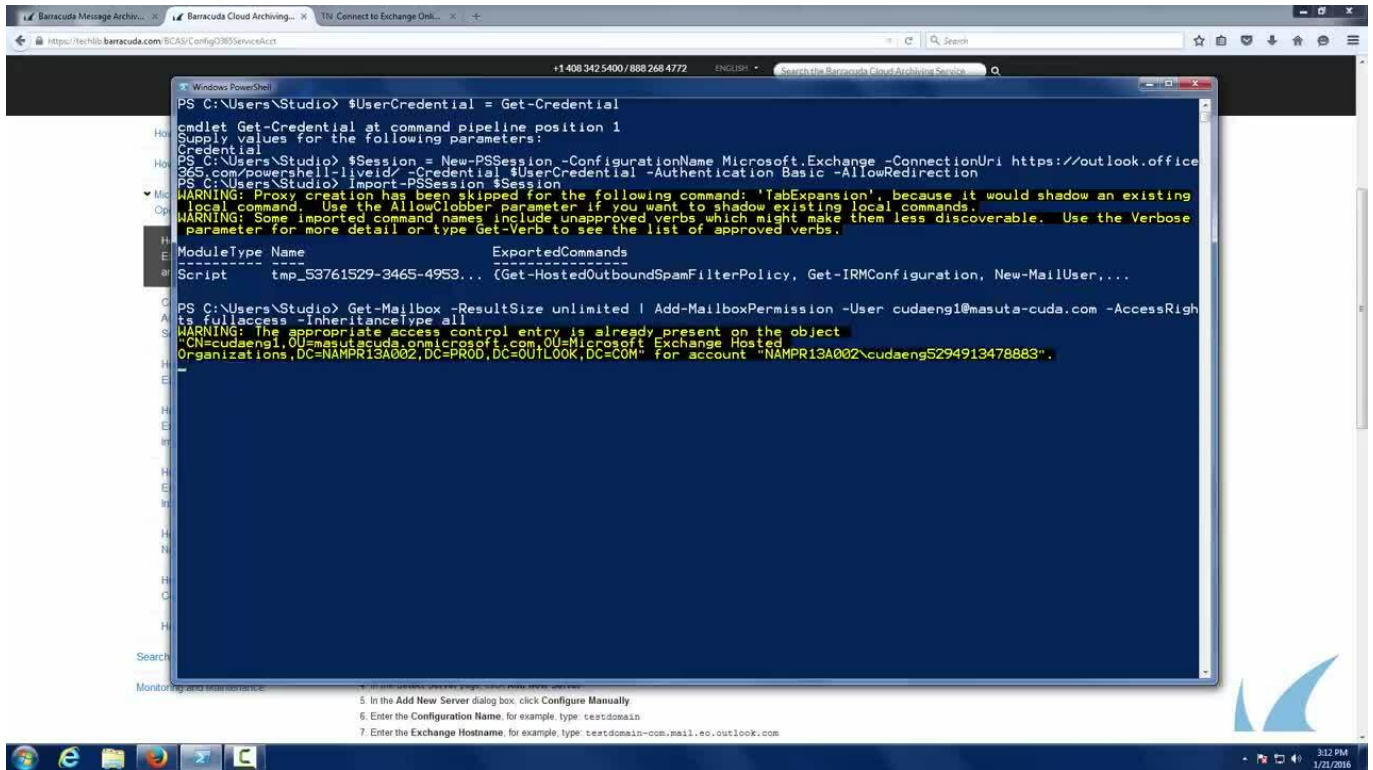


Configure an Office 365 Exchange Online Service Account - Video

<https://campus.barracuda.com/doc/75694566/>

Watch this video for a short walkthrough of how to configure an Office 365 Exchange Online Service Account:





```
PS C:\Users\Studio> $UserCredential = Get-Credential
cmdlet Get-Credential at command pipeline position 1
Supply values for the following parameters:
Credential:
PS C:\Users\Studio> $Session = New-PSSession -ConfigurationName Microsoft.Exchange -ConnectionUri https://outlook.office365.com/powershell-liveid/ -Credential $UserCredential -Authentication Basic -AllowRedirection
PS C:\Users\Studio> Import-PSSession $Session
WARNING: Proxy creation has been skipped for the following command: 'TabExpansion', because it would shadow an existing local command. Use the AllowClobber parameter if you want to shadow existing local commands.
WARNING: Some imported command names include unapproved verbs which might make them less discoverable. Use the Verbose parameter for more detail or type Get-Verb to see the list of approved verbs.
ModuleType Name ExportedCommands
-----
Script tmp_53761529-3465-4953... (Get-HostedOutboundSpamFilterPolicy, Get-IRMConfiguration, New-MailUser,...)
PS C:\Users\Studio> Get-Mailbox -ResultSize unlimited | Add-MailboxPermission -User cudaeng1@masuta-cuda.com -AccessRights fullcontrol -InheritanceType all
WARNING: The appropriate access control entry is already present on the object
"CN=cudaeng1,OU=masuta-cuda.onmicrosoft.com,OU=Microsoft Exchange Hosted Organizations,DC=NAMPRI3A002,DC=PROD,DC=OUTLOOK,DC=COM" for account "NAMPRI3A002\cudaeng5294913478883".
```

Videolink:

<https://campus.barracuda.com/>

Figures

© Barracuda Networks Inc., 2024 The information contained within this document is confidential and proprietary to Barracuda Networks Inc. No portion of this document may be copied, distributed, publicized or used for other than internal documentary purposes without the written consent of an official representative of Barracuda Networks Inc. All specifications are subject to change without notice. Barracuda Networks Inc. assumes no responsibility for any inaccuracies in this document. Barracuda Networks Inc. reserves the right to change, modify, transfer, or otherwise revise this publication without notice.