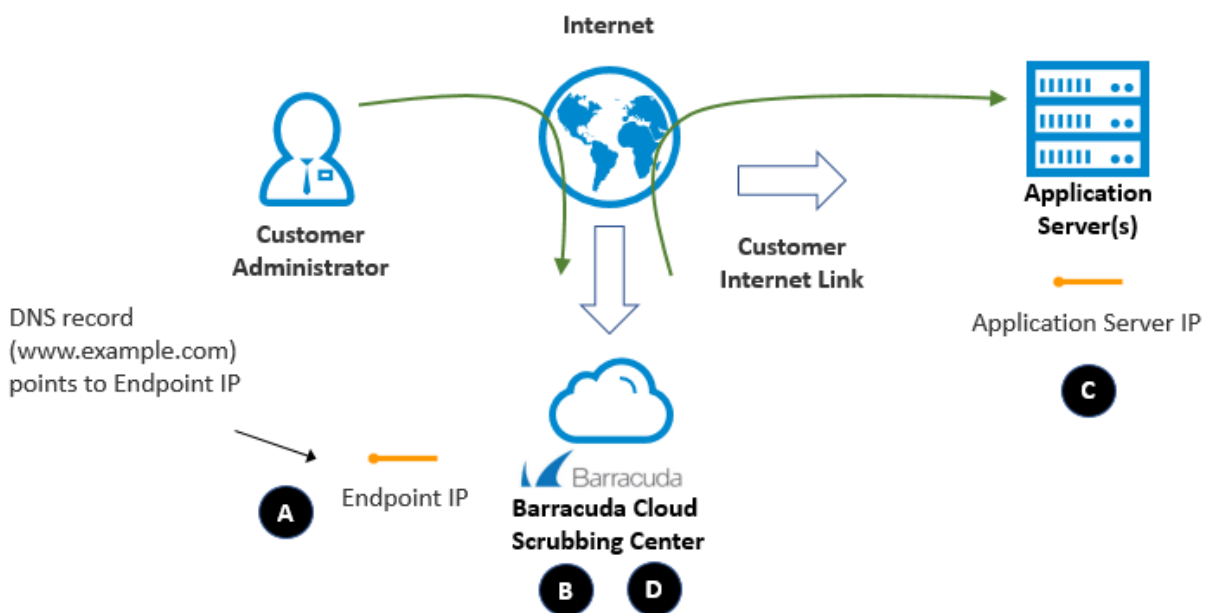


Understanding Traffic Flow with Barracuda WAF-as-a-Service

<https://campus.barracuda.com/doc/77401087/>

When setting up Barracuda WAF-as-a-Service, it is helpful to understand the flow of traffic between Barracuda WAF-as-a-Service and your application servers.



The diagram above illustrates the following important points:

- A.** Barracuda assigns an IP Address to each application, as described in [Endpoints](#). During setup, you will change your DNS records to point all of your application traffic to your Barracuda endpoints.
- B.** Barracuda WAF-as-a-Service's Cloud Scrubbing Centers filter incoming traffic from users, blocking network attacks such as Distributed Denial-of-Service (DDoS); application attacks, such as SQL Injection and Cross-Site Scripting; and bad bots.
- C.** Legitimate traffic is passed via your Internet link to your application servers, which process the request and return a response.
- D.** Barracuda WAF-as-a-Service's Cloud Scrubbing Centers filter your application server's response data, blocking sensitive information such as credit card and social security numbers, and masking information about your application server that could help attackers determine the operating system or server software you are running. It then returns the response data to your users.

Note that if your application servers are behind a network firewall performing Network Address Translation (NAT), you must configure the network firewall to expose these application servers on a public IP address. For your convenience, you can use multiple ports on the same IP address to expose multiple application servers. Make sure to configure your network firewall to only allow connections to these addresses directly from Barracuda, as described in [Restricting Direct Traffic](#).

Figures

1. WAFaaS_network2.png

© Barracuda Networks Inc., 2019 The information contained within this document is confidential and proprietary to Barracuda Networks Inc. No portion of this document may be copied, distributed, publicized or used for other than internal documentary purposes without the written consent of an official representative of Barracuda Networks Inc. All specifications are subject to change without notice. Barracuda Networks Inc. assumes no responsibility for any inaccuracies in this document. Barracuda Networks Inc. reserves the right to change, modify, transfer, or otherwise revise this publication without notice.