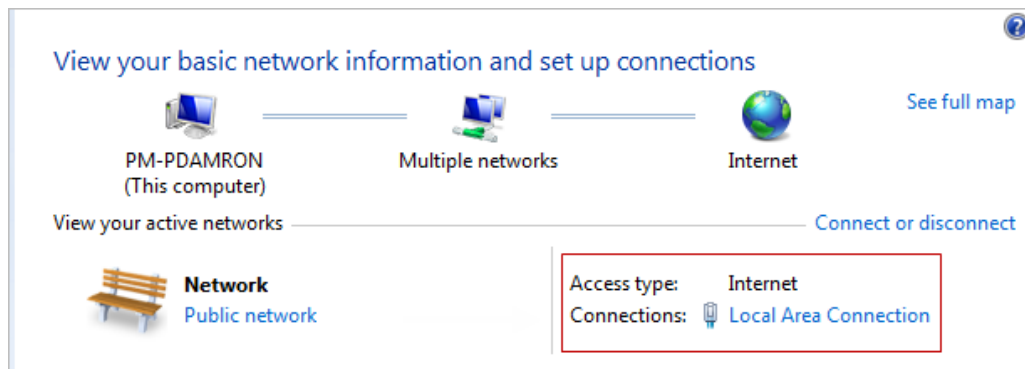


## How to Configure Barracuda DNS Nameservers on Windows 8

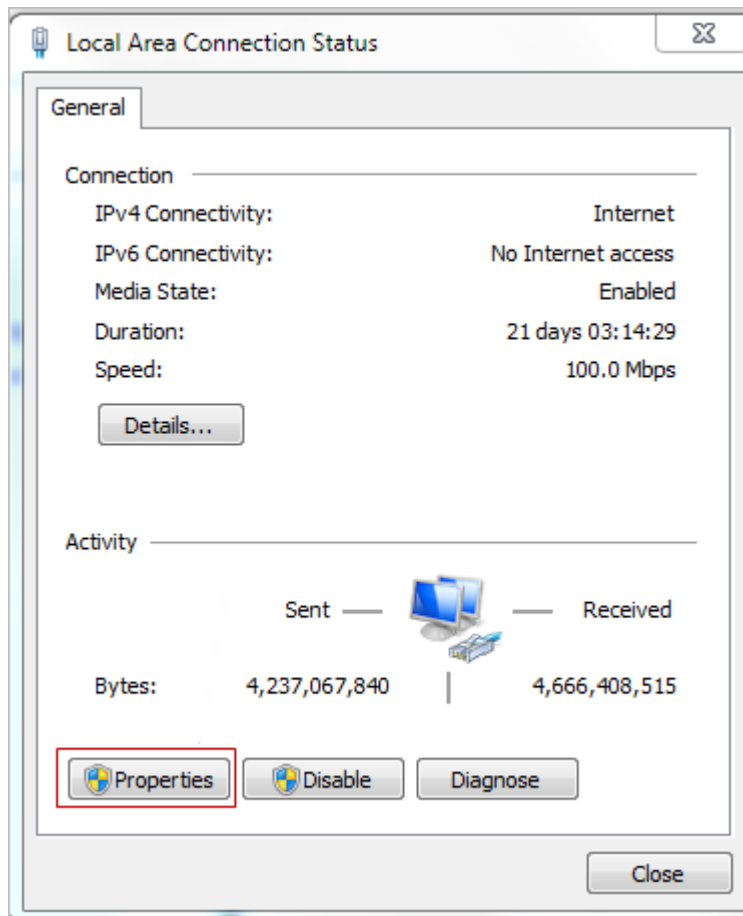
<https://campus.barracuda.com/doc/78152431/>

In order to use the Barracuda DNS Filtering Service, you must direct your computer(s) (laptop / desktop) to the assigned Barracuda Domain Name Server (DNS). The IP address for the Barracuda DNS nameservers are shown on the **Configure DNS** page of the **Add Location** popup, which you access on the **DNS FILTERING** page.

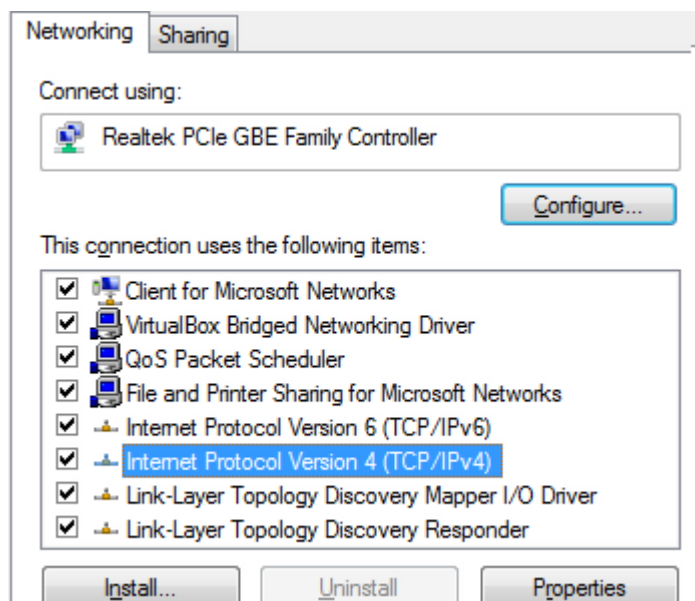
1. From the Windows 8 Desktop, right click the **Networks** icon and select **Open Network and Sharing Center**.
2. Click on your primary connection or **Local Area Connection** under **Active Networks**.
3. While in the **Open Network and Sharing Center**, click the current active connection or the connection that you want to configure the Barracuda nameserver on.



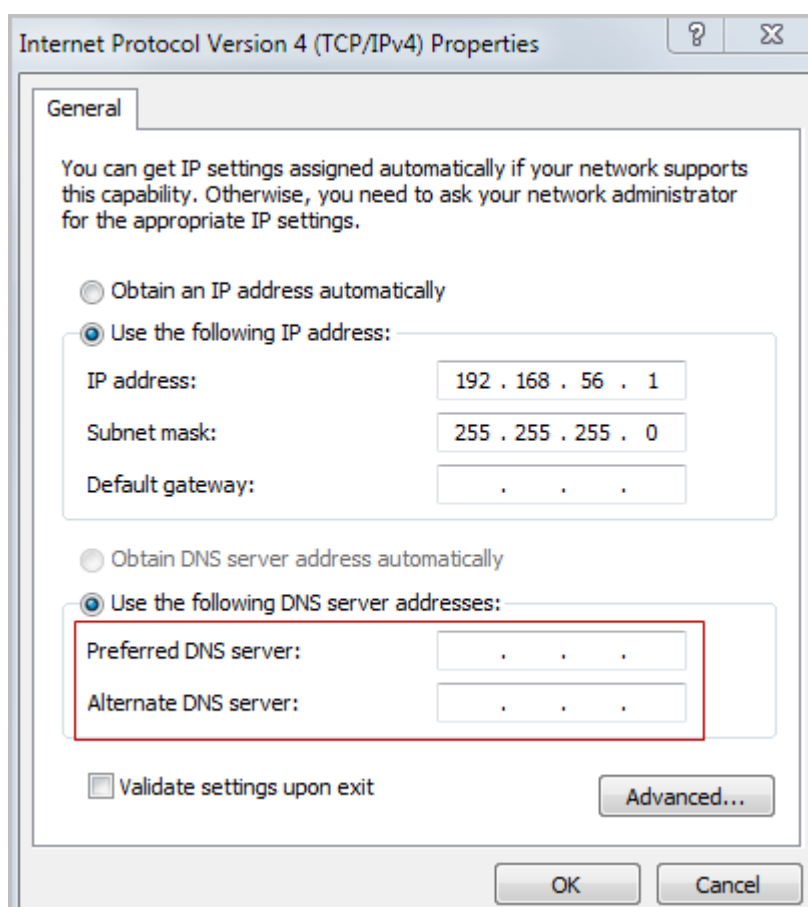
4. Choose/open the properties for that connection.



5. Highlight the Internet Protocol Version 4 (TCP/IPv4) option, then click Properties.



6. Select **Use the following DNS server addresses** and fill out the **Preferred DNS server** and **Alternate DNS Server** fields with the Barracuda DNS server IP addresses. Click **OK**.



7. Clear your browser and DNS cache. This ensures that your new DNS configuration settings take effect immediately.

## Figures

1. DNSSelectLocalWin8.png
2. DNSSetupLocalAreaConnWindows8.png
3. TCPIPv4.png
4. PreferredAltDNS.png

© Barracuda Networks Inc., 2024 The information contained within this document is confidential and proprietary to Barracuda Networks Inc. No portion of this document may be copied, distributed, publicized or used for other than internal documentary purposes without the written consent of an official representative of Barracuda Networks Inc. All specifications are subject to change without notice. Barracuda Networks Inc. assumes no responsibility for any inaccuracies in this document. Barracuda Networks Inc. reserves the right to change, modify, transfer, or otherwise revise this publication without notice.